

Model VD10A Cast-iron construction composed of 1-8 mechanical section. Inlet with built-in working section (as standard). Inlet in a separate module, without working section (as option).



Pressure and flow regulation valves, filters, hand pumps, power supply units and different sensors (pressure, flow, temperature), speed over-gears, mechanical and electromagnetic clutches, cartridge valves and special integrated circuit manifolds, ratiomotors, hoisting and towing winches, rotators. SALAMI SPA . Giuseppe Salami: 1927 ??? 2018



SALAMI FLUID POWER SYSTEMS: PART NUMBER: 2PE6.5/6.5/6.5D-R52S2: STOCK: OUT OF STOCK: DIMENSIONS (L-W-H) 10in x 5.25in x 4.75in: PACKAGING: This item may or may not include original packaging. PAYMENT: SHIPPING: This item qualifies toward FREE Domestic Ground shipping. Only orders shipping domestically within the contiguous 48 states and an ???



They focus on developing fluid power systems that meet a customer's specific needs. PERMCO's product offering now includes gear and vane pumps/motors, flow dividers, intensifiers and a variety of accessories and components. specializing in the field of hydraulic power applied to mobile applications. Salami products are manufactured with a



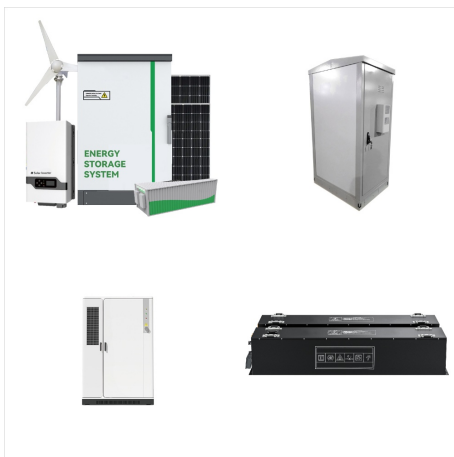
VDM6 - Directional Control Valves: Monoblock types - from Salami Hydraulics.. Cast iron monoblock construction from 1 to 7 working sections. Parallel circuit, load check valve protection on down-stream of the pressure "P" line.



SALAMI FLUID POWER SYSTEMS: PART NUMBER: 2PE19D-R54S2: STOCK: IN STOCK: PACKAGING: This item may or may not include original packaging. PAYMENT: SHIPPING: This item qualifies toward FREE Domestic Ground shipping. Only orders shipping domestically within the contiguous 48 states and an item total equal to or over \$100 qualify for this offer



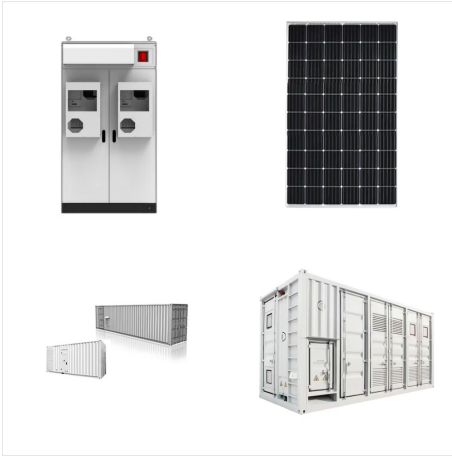
Our customers include industrial and mobile OEM's, industrial manufacturers, and users of fluid power technologies. Combined with our knowledgeable sales team and expansive inventory, we can design, prototype, manufacture, and service ???



SALAMI. For over 60 years, Italian manufacturer SALAMI has been a leader in valves, pump, motors, flow dividers and remote control systems for the hydraulic power market. You'll find SALAMI products in a range of applications across the globe in agricultural, construction, mining, materials handling and general industry.



PLEASE NOTE: We have numerous crosses in our inventory system. You may receive a cross referenced part number on your order. If you require a specific manufacturer, then please contact us for availability. Otherwise, you may receive a crossed part. SALAMI FLUID POWER SYSTEMS HYDRAULIC MULTIPLE GEAR PUMP



Salami SpA: societ? a socio unico. Sede legale e amm.va: Via Emilia Ovest 1006, 41123 Modena registro imprese n. 03236400366 di Modena rea n 370366 di Modena capitale sociale ???5.500.000,00 i.v. Call us now: +39. 059.387.411;



SALAMI FLUID POWER SYSTEMS: PART NUMBER: 3PE55/2PE19S-R55S3-UA1: STOCK: OUT OF STOCK: DIMENSIONS (L-W-H) 13in x 7in x 5.75in: PACKAGING: This item may or may not include original packaging. PAYMENT: SHIPPING: This item qualifies toward FREE Domestic Ground shipping. Only orders shipping domestically within the contiguous 48 states and an ???



Salami SpA: societ? a socio unico. Sede legale e amm.va: Via Emilia Ovest 1006, 41123 Modena registro imprese n. 03236400366 di Modena rea n 370366 di Modena capitale sociale ???5.500.000,00 i.v. Call us now: +39. 059.387.411;