

Who is shritech energy Pte Ltd?

SHRITECH ENERGY PTE. LTD. (the "Company") is a Exempt Private Company Limited by Shares, incorporated on 6 July 2016 (Wednesday) in Singapore . The address of the Company's registered office is 26 TUAS AVENUE 10, SINGAPORE (639147). The Company current operating status is live and has been operating for 8 years.

Is shritech energy a listed company?

SHRITECH ENERGY PTE. LTD. is a non-listed entity in the private market with no IPO filing As of 1 March 2020, the company is not involved in any litigation based on the public records of the Supreme Court of Singapore. This information is provided to the best of our research ability and we make no warranties over any data inaccuracies or omissions

Who is shritech manufacturing?

ShriTech Manufacturing is a full-service CNC machine shops specialized in solving highly competitive and dynamic business | ShriTech Energy (PT.SINGATAC BINTAN) Lot 2 Bintan Industrial Estate Lobam, Bintan Kepulauan Riau 29154 Tel: +62- 770696788/89 HP: +62- 82391100911 Fax: +62- 770696790 Email: Sales@shritechenergy.com.sg

How to contact shritech energy PT singatac Bintan?

ShriTech Energy (PT.SINGATAC BINTAN) Lot 2 Bintan Industrial Estate Lobam, Bintan Kepulauan Riau 29154 Tel: +62- 770696788/89 HP: +62- 82391100911 Fax: +62- 770696790 Email: Sales@shritechenergy.com.sg SHRITECH ENERGY | 175 followers on LinkedIn.



SHRITECH ENERGY PTE. LTD. (the "Company")  
The Company is a EXEMPT PRIVATE COMPANY LIMITED BY SHARES and it's current status is Live Company. The company was registered / incorporated on 06 July 2016 (Wednesday), 6 years ago with a paid up capital of \$100,000 The address of this company registered office is 26, TUAS AVENUE 10, ???



Managing Director - ShriTech Energy Pte Ltd - Singapore / Indonesia / India ? Experience: Shri Tech Energy Pte Ltd ? Location: Singapore ? 500+ connections on LinkedIn. View SENTHIL KUMAR's profile on LinkedIn, a professional ???



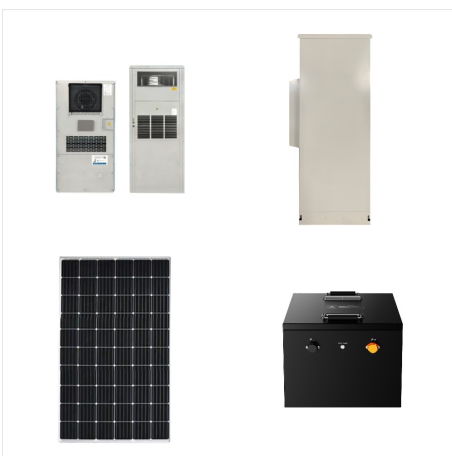
Shritech Energy Indonesia Pte Ltd, Indonesia.  
Registered under Business Number, the company details include shareholder data, capital structure, and key financial reports. CompaniesFacts Shritech Energy Indonesia Business Number 1285009  
Registered Address Jl. Kawasan Industri Sekupang



Responsibilities . Responsible to lead, guide and supervise Machinists to produce parts in accordance with specifications and within scheduleIdentify strength and necessary improvements to achieve higher efficiencyKnowledge of Basic CNC Machines and able to read the programmingAttend daily production meeting with his team members to discuss daily work ???



SHRITECH ENERGY PTE. LTD. is a Singapore EXEMPT PRIVATE COMPANY LIMITED BY SHARES. The company was incorporated on 06 Jul 2016, which is 8.2 years ago. The address of the Business's registered office is 26 TUAS AVENUE 10, Singapore 639147. The Business current operating status is Live Company. The Business's principal activity is MANUFACTURE ???



ShriTech Energy Pte Ltd. Singapore 639147. Performing CNC & conventional machining work with lathe and milling. Learning and performing other workshop tasks such as Laser Cladding, metal spray, etc.



SHRITECH ENERGY is a Singapore registered private limited company. We are committed to creating a world-class products, with the highest quality without compromise in safety and reliability. We believe in providing state-of-the art engineering services to our customers along with a safe working environment for here at team ShriTech.