

Does Scarlett solo 4th generation support screen readers?

Applies to Scarlett Solo 4th Generation Focusrite Control 2 offers extensive support for screen readers. This article provides a detailed description of the functions available to you when using your screen reader to control a Scarlett Solo 4th Gen with Focusrite Control 2.

What is a 3rd generation Scarlett solo?

Thank you for purchasing this Third Generation Scarlett Solo, one of the family of Focusrite professional computer audio interfaces incorporating high quality Focusrite analogue preamps.

Does Scarlett solo need a power supply?

Scarlett Solo gets its power from your computer via the USB connection: there is no need for a separate power supply. However, we do recommend that when using it with a laptop, the laptop should be powered using its AC adaptor, as otherwise the battery will run down faster than when powering the laptop alone.

What is included with the Scarlett solo?

It's all simple, clean, and elegant. The Scarlett Solo comes bundled with XLN Audio Addictive Keys, Ableton Live Lite, Focusrite Red 2 & 3 Plugin Suite, Focusrite Drum Tracks, Pro Tools, First Focusrite Creative Pack, Softube Time & Tone Bundle and Splice Subscription.

What is the Focusrite Scarlett solo 3rd gen?

The Focusrite Scarlett Solo 3rd Gen provides singer-songwriters with a reassuringly easy recording process. Shop direct with Focusrite today.

What is Scarlett solo?

Scarlett Solo is an ideal audio interface for many DAW applications running on a laptop or other computer, PC or Mac. A typical set of connections is illustrated below. This setup illustrates a typical configuration for recording using DAW software on your Mac or PC.

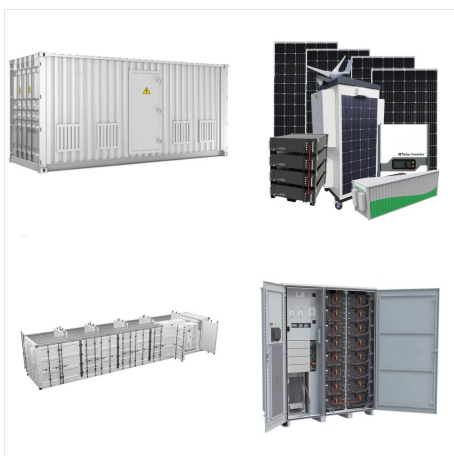
SCARLETT SOLO PHANTOM POWER



Just as the Scarlett 2i2, the Solo features 48 V phantom power and Air mode, giving you plenty of agency over your recordings. For \$140, the Scarlett Solo 4th Gen offers a powerful foundation to the budding audio engineer. Buy Focusrite Scarlett Solo 4th Gen at: Sweetwater Amazon Honorable mentions



Applies to: Scarlett 3rd Generation By default, all 3rd Generation Scarletts will disable 48V (phantom power) upon turning the device off. This is a safety feature we included to help prevent accidental damage to older ribbon microphones, which can be damaged when phantom power is applied to them.



If phantom power is on make sure it's off. If the only way to shut phantom power off is in the software mixer make sure the ac is plugged in. If it has no ac then I'm not sure what else I can suggest other than call Focurite or return the unit. Keep in mind that the Scarlett doesn't like being in the same machine with other USB 1.1 or 1.0 devices.

SCARLETT SOLO PHANTOM POWER



Max draw for phantom power is ~.7 watts assuming 14mA 48v phantom power being the peak. the output standard for USB allows up to 2.5 watts of power. This means you could safely run 2 mics at the "max" draw of phantom power without pressuring the USB port.



2-Channel USB2.0 Audio Interface with USB-C Connection 24 bit / 192 kHz, 1x Scarlett microphone preamp, +48 V phantom power, Switchable air function, 1 Mic input: XLR, 1 Line/instrument input: 6.3 mm jack, 2 Line outputs: 6.3 mm jack balanced,

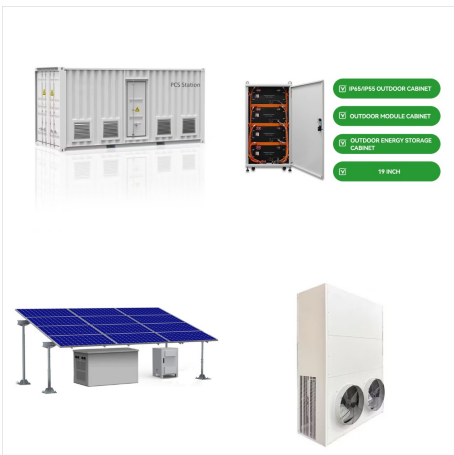


The Focusrite Scarlett Solo Studio 4th Generation ??? a USB-C audio interface for Mac and PC ??? comes with a balanced line input for connecting synthesizers or other line-level audio device and two balanced outputs, which will most often be used for monitoring purposes. 48V of phantom power, and (as a new addition to the 4th Generation) a

SCARLETT SOLO PHANTOM POWER



No phantom power from Scarlett Solo 1st gen
Zedramcak 9 March 2019. Hello. I just bought an
AKG P220 and wanted to try recording with my
Focusrite Scarlett solo. But I don't get any sound
from it. When I connect my Shure SM58, ???



Presence mode boosts your signal's high-end,
bringing the sound to the front of the mix. Create
intimate vocal recordings, capture every detail of
acoustic guitars, and hear your drum overheads
shimmer. Harmonic Drive mode boosts mid-range
harmonics in your sound, making its unique
character shine through the mix. Try it on guitars,
vocals, or anything else that needs a little ???



Phantom power: Both interfaces provide +48V
phantom power to the mic input, which allows you to
use condenser microphones that require external
power. This is useful if you want to record vocals or
acoustic instruments with a more detailed and
accurate sound. The Focusrite Scarlett Solo 3rd
Gen has a slightly warmer and smoother sound that

SCARLETT SOLO PHANTOM POWER



The first controls 48V phantom power, an important feature for anyone using condenser microphones. The second manages the interface's air feature setting, an effect exclusive to Focusrite that's integrated into the unit. The Scarlett Solo has a single powered USB hub so it can send power and data when linked up to a laptop or PC.



The CM25 MkIII is a condenser type microphone, requiring phantom power to operate. The Scarlett Solo Studio package includes an adjustable microphone stand-adapter that comes with a pre-attached 5/8" to 3/8" thread-adapter for attaching to ???



I used to turn the levels down and turn off all buttons so nothing's lit up. The phantom power shouldn't cause any damage to your mic or scarlett so don't worry if you forget about that. It'll turn off automatically before you turn the scarlett on again (I don't recommend leaving it on).

SCARLETT SOLO PHANTOM POWER



Two-channel USB 2.0 audio interface with USB-C connection 24-bit / 192 kHz, Focusrite Rednet series converters with 120 dB dynamic range, Scarlett microphone preamp, +48 V phantom power, Switchable Air function, Loopback function, Dynamic Gain



Buy Focusrite Scarlett Solo USB-C Audio Interface (4th Generation) featuring Singer-Songwriter, Guitarist, Podcaster, Bus/External Power, Mac/Windows/iPadOS, XLR Mic Preamp, 1/4" Line/Hi-Z In, Headphone Out, 2 Monitor Outs, 24-Bit / 192 kHz AD/DA Conversion, 48V, Zero-Latency Direct Monitoring, Mic Air Mode, Multicolor Gain Halos, Virtual Loopback ???



The XLR input is equipped with both 48 V phantom power as well as Focusrite's signature Air mode, and the TRS-in has a switch to toggle between instrument and line level. Image: Higher Hz. Each channel has an illuminated ???

SCARLETT SOLO PHANTOM POWER



1. A dynamic mic will not have any problem with phantom. Some ribbon mics should not be sent phantom power 2. There is no phantom power on the guitar input (1/4") Only the xlr will carry it. Not sure exactly what you are asking with your edit. the interface will of course playback everything you send to it.

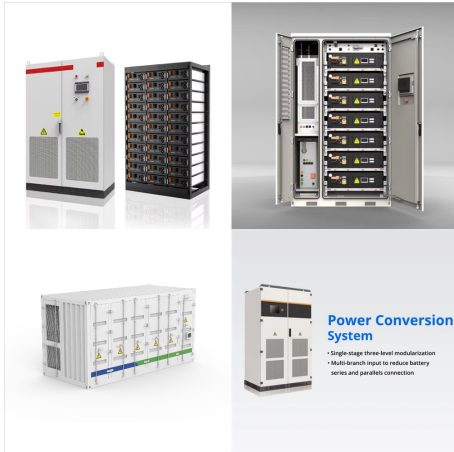


48v phantom power is for certain microphones that require power to boost the signal to standard "mic" level, namely large diaphragm condenser mics, though some others may use the power as well. Air is a selection that gives a bit of an EQ shelf starting around the 7k region, providing an additional "airiness" and mid-high end boost that



I used to turn the levels down and turn off all buttons so nothing's lit up. The phantom power shouldn't cause any damage to your mic or scarlett so don't worry if you forget about that. It'll turn off automatically before you turn the scarlett on ???

SCARLETT SOLO PHANTOM POWER



Phantom Power / Shutting down PC (HELP) I recently got a Scarlett Solo interface with a Rode NT1A condenser microphone. Whenever I turn my pc off, I usually leave phantom power on, and when I restart my PC or turn it on after shutting it down night before, my gain indicator flashes yellow to occasionally red as if it's clipping.

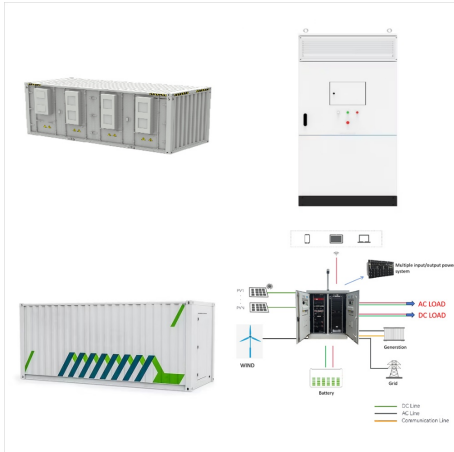


Applies to Scarlett Solo 4th Generation. Focusrite Control 2 offers extensive support for screen readers. This article provides a detailed description of the functions available to you ???



I have a rode procaster microphone and a Scarlett solo gen 3. Whenever I try to record my voice, it works only when the the 48V option is turned on. Otherwise it's not recording at all. That's supposed to be a dynamic mic, so phantom power shouldn't be needed. Having 48V on won't hurt it though, so if it sounds good leave it alone.

SCARLETT SOLO PHANTOM POWER



The 2i2 is equipped with two high-grade Scarlett microphone preamps with switchable 48 V phantom power, as well as the brand-new Air Mode. Electric guitars and basses can also be plugged in directly, as the input impedance of the front sockets can be set to Hi-Z. The Scarlett 2i2 also looks great and is very attractively priced.



The Scarlett Solo is one of their best-selling and most well known product lines. Phantom Power: +48V; Bundled Software: Ableton Live Lite, Pro Tools First Focusrite Creative Pack, Focusrite Red plugin suite, several more; Supporting Information. Support; User Guide; Warranty ??? 3 years;



hey, i just got this mic yesterday, im having some hard times with the gain on usb mode, i have set the gain to 36db (max) on the mv7, compressor set at medium and the mic is around 4inch away from my mouth on the meter its peaking around -14db /-15db, i see on the internet some reviewer can set the gain on the app around 24db and still get healthy amount of signal

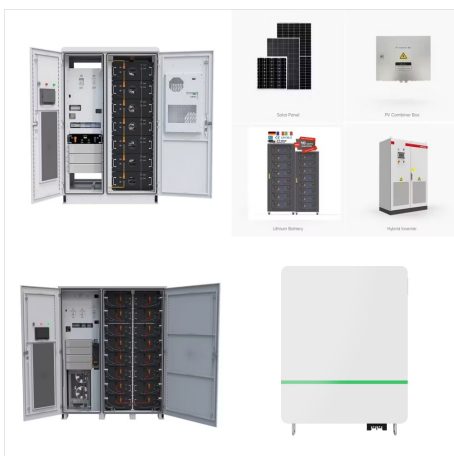
SCARLETT SOLO PHANTOM POWER



Brandon Schock reviews the Focusrite Scarlett Solo 3rd Gen and compares it to the AudioBox, Komplete Audio 1, UMC202HD, and Evo 4. Musical instruments. Pianos & keyboards. Reviews; Online lessons The XLR input is equipped with both 48 V phantom power as well as Focusrite's signature Air mode, and the TRS-in has a switch to toggle between



2-Channel USB2.0 Audio Interface with USB-C Connection 24 bit / 192 kHz, 1x Scarlett microphone preamp, +48 V phantom power, Switchable air function, 1 Mic input: XLR, 1 Line/instrument input: 6.3 mm jack, 2 Line outputs: 6.3 mm ???

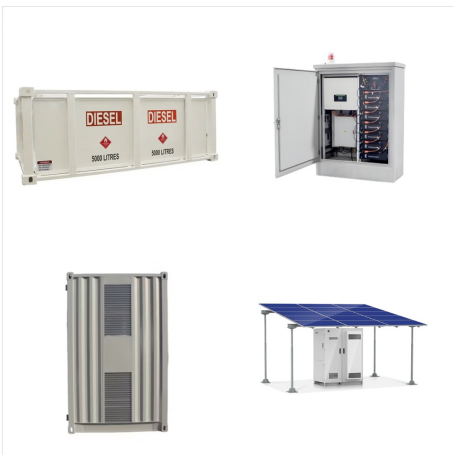


An in-line preamp takes 48v of phantom power from the audio interface and converts that into ~25dB of clean gain for your Shure SM7B. This will give you more volume with less noise (hiss). Scarlett 2i2 vs Scarlett Solo. Scarlett 2i2 & SM7B FAQ. Does the SM7B Work With Scarlett 2i2? Yes, the Shure SM7B can be used with the Scarlett 2i2. You

SCARLETT SOLO PHANTOM POWER



Plug your guitar into Scarlett Solo's hi-Z instrument input, it feels just like an amp. Hook a mic up to Solo's mic pre and it sounds great right away. - Phantom Power: Yes - Instrument Inputs: 1 - Line Inputs: 1 - Air Mode: Yes - Line Outputs: 2 - Headphone Outputs: 1 - Loopback: Yes - Connectivity: USB Type-C - Protocol: USB 2.0 - Form



The primary difference is that the Scarlett Solo (true to its name) offers one Preamp while the Scarlett 2i2 Phantom power is available on both. So condenser mics and any other gear that needs powering are usable. Price. Scarlett Solo: \$119.99; Scarlett 2i2: \$169.99; Verdict.