



Lithium-ion battery prices have decreased over the years and are now becoming a viable option for data center UPS. This paper provides a brief overview of li-ion batteries in comparison to VRLA batteries for static UPS applications, including optimal chem Easily find the nearest Schneider Electric distributor in your location. opens in new



Galaxy Lithium-ion Battery Cabinet Manuals Galaxy ? 1/4 ? 10???13???16 17 ? 1/4 ? ??? - Chinese (Simplified)

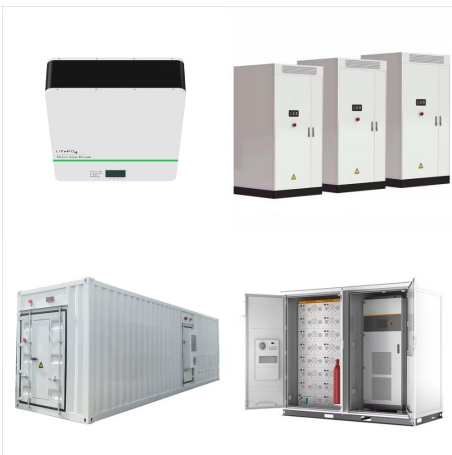


Galaxy Lithium-ion Battery Cabinet With 10, 13, 16, or 17 Battery Modules ??? Installation and Operation English. Italiano - Italian; ????????????,?? - Russian; These signal cables will be installed by Schneider Electric during the start-up service. 0W76936. Signal cable from battery module to battery module ??? long

# SCHNEIDER ELECTRIC LITHIUM ION BATTERY



Schneider Electric USA. Discover Galaxy VX; the highly efficient 3-Phase UPS with flexible operating modes for large facilities, data centers and business-critical applications. Our new, innovative lithium-ion battery solutions for 3-phase uninterruptible power supplies bring compact, lightweight, long-lasting and sophisticated energy



Galaxy Lithium-ion Battery Cabinet With 10, 13, 16, or 17 Battery Modules ??? Installation and Operation English. ????????????,?? - Russian; Deutsch - German. no responsibility or liability is assumed by Schneider Electric and its subsidiaries for any errors or omissions in the informational content of this document, as well as any non



Download the white paper now to learn how lithium-ion battery prices have decreased over the years and are now becoming a viable option for data center UPS. This paper provides a brief overview of li-ion batteries in comparison to VRLA batteries for single-phase UPS applications. A 10-year total cost of ownership (TCO) analysis is also provided showing li-ion is 53% less than ???

# SCHNEIDER ELECTRIC LITHIUM ION BATTERY



Galaxy Lithium-ion Battery Cabinet Manuals Table of Contents. Galaxy Lithium-ion Battery Cabinet With 10, 13, 16, or 17 Battery Modules ??? Installation and Operation NOTE: Schneider Electric uses the battery system monitoring software ITE/DCE to monitor the performance of the battery system. Please contact Schneider Electric application

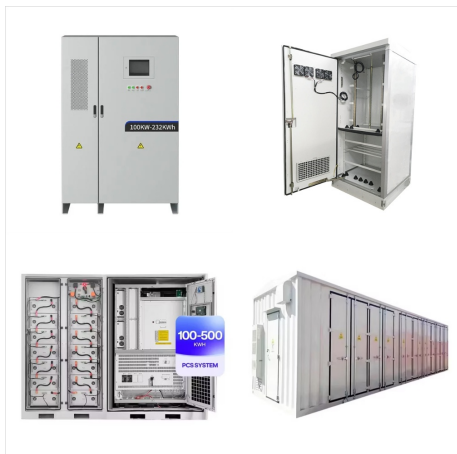


Galaxy Lithium-ion Battery Cabinet With 10, 13, 16, or 17 Battery Modules ??? Installation and Operation English. - Chinese (Simplified) Italiano - Italian no responsibility or liability is assumed by Schneider Electric and its subsidiaries for any errors or omissions in the informational content of this document, as well as any non



The Preventive Maintenance Service for Lithium-ion Batteries provides a comprehensive inspection of the battery system enabling optimum battery life Skip To Main Content. I'd like to receive news and commercial info from Schneider Electric and its affiliates via electronic communication means such as email, and I agree to the collection

# SCHNEIDER ELECTRIC LITHIUM ION BATTERY



Galaxy Lithium-ion Battery Cabinet Manuals Tabla de contenido. Armario de baterías de litio Galaxy Con 10, 13, 16 o 17 módulos de baterías ??? Instalación y funcionamiento La marca Schneider Electric y cualquier otra marca comercial de Schneider Electric SE y sus filiales mencionadas en este documento son propiedad de Schneider Electric



Galaxy Lithium-ion Battery Cabinet With 10, 13, 16, or 17 Battery Modules ??? Installation and Operation English. ???????????? - Russian; no responsibility or liability is assumed by Schneider Electric and its subsidiaries for any errors or omissions in the informational content of this document, as well as any non-intended use or misuse



Schneider Electric Hong Kong, China. Browse our products and documents for Galaxy Lithium-ion Battery Systems - A compact, lightweight, long-lasting and sophisticated energy storage solution for 3-phase uninterruptible power supplies.



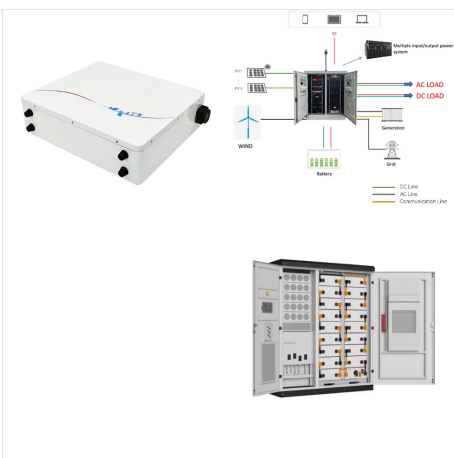
# SCHNEIDER ELECTRIC LITHIUM ION BATTERY



Galaxy Lithium-ion Battery Cabinet With 10, 13, 16, or 17 Battery Modules ??? Installation and Operation English. - Chinese (Simplified) no responsibility or liability is assumed by Schneider Electric and its subsidiaries for any errors or omissions in the informational content of this document, as well as any non-intended use or



Browse our products and documents for Galaxy Lithium-ion Battery Systems - A compact, lightweight, long-lasting and sophisticated energy storage solution for 3-phase uninterruptible power supplies. I'd like to receive news and commercial info from Schneider Electric and its affiliates via electronic communication means such as email, and I



Galaxy Lithium-ion Battery Cabinet Installation and Operation Manual Date: August 30 2023 | Type: User guide. Languages: English | I'd like to receive news and commercial info from Schneider Electric and its affiliates via electronic communication means such as email, and I agree to the collection of information on the opening and clicks on

# SCHNEIDER ELECTRIC LITHIUM ION BATTERY



Schneider 60/150 CC. Schneider 4048 inv/charger. Schneider System Control Panel. 4 x 2kw 48v Chevy Volt modules = 8kw storage. I have read through the manuals for the Schneider equipment and watched their videos (and others) but I can't find anything for this equipment that specifically addresses Lithium-ion batteries.



Galaxy Lithium-ion Battery Cabinet With 10, 13, 16, or 17 Battery Modules ??? Installation and Operation English. Italiano - Italian; Fran?ais - French; no responsibility or liability is assumed by Schneider Electric and its subsidiaries for any errors or omissions in the informational content of this document, as well as any non-intended



Galaxy Lithium-ion Battery Systems - A compact, lightweight, long-lasting, and sophisticated lithium-ion battery solution for uninterruptible power supplies. Shanghai Metro memanfaatkan layanan EcoStruxure??? Power dan Schneider Electric untuk operasi kereta yang aman, stabil, dan efisien. Pelajari lebih lanjut . Cerita Kesuksesan Pelanggan ;

# SCHNEIDER ELECTRIC LITHIUM ION BATTERY



Galaxy Lithium-ion Battery Cabinet With 10, 13, 16, or 17 Battery Modules ??? Installation and Operation English. Espa?ol - Spanish (Castillian) Italiano - Italian no responsibility or liability is assumed by Schneider Electric and its subsidiaries for any errors or omissions in the informational content of this document, as well as any



Lithium-ion batteries do require less energy to keep them charged than lead acid. The charge cycle is 90% efficient for a lithium-ion battery vs. 80-85% for a lead acid battery. Additionally, lead acid batteries self-discharge at a higher rate than Lithium-ion. NVIDIA plus Schneider Electric Reference Designs equal fast and easy AI SuperPOD

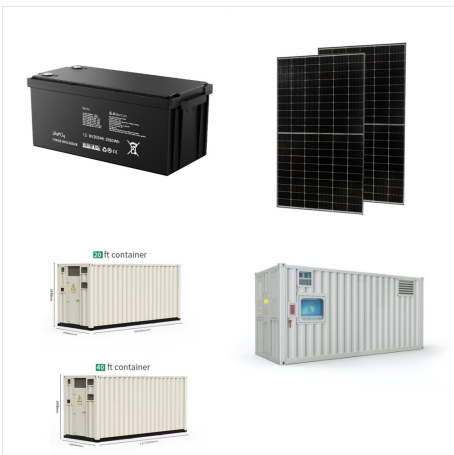


Galaxy Lithium-ion Battery Cabinet SMPS AC/DC Converter ??? Installation Important Safety Instructions ??? SAVE THESE INSTRUCTIONS. Safety Precautions; no responsibility or liability is assumed by Schneider Electric and its subsidiaries for any errors or omissions in the informational content of this document, as well as any non-intended

# SCHNEIDER ELECTRIC LITHIUM ION BATTERY



Galaxy Lithium-ion Battery Cabinet With 10, 13, 16, or 17 Battery Modules ??? Installation and Operation must be installed according to the specifications and requirements as defined by Schneider Electric. Servicing of batteries must only be performed or supervised by qualified personnel knowledgeable of batteries and the required



RM1UC - APC Smart-UPS, Line Interactive, 500VA, Lithium-ion, Rackmount 1U, 120V, 4x NEMA 5-15R outlets, SmartConnect Port, Short Depth | APC USA  
Lithium-ion battery minimizes the need to replace battery during the life time of UPS Green Premium TM label is Schneider Electric's commitment to delivering products with best-in-class



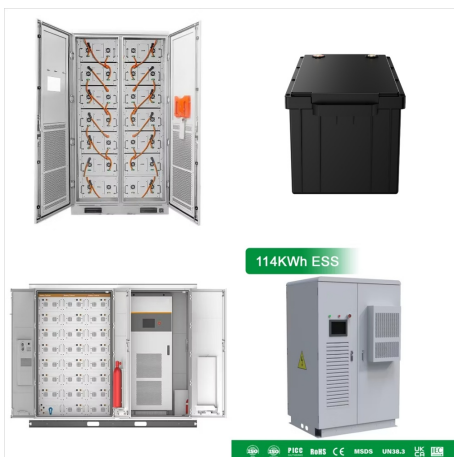
In my last post I explained how lithium-ion (Li-ion) batteries are poised to bring dramatic change to UPS systems for small- to medium-size data centers, changes that will offer benefits including the ability to pack far more battery power into the same or smaller spaces, and extended lifetime. This time, I'll examine how Li-ion technology stands to benefit UPS systems ???



# SCHNEIDER ELECTRIC LITHIUM ION BATTERY



Thanks Dylan for your comments. As you mentioned, unlike the Lead acid batteries, the Lithium Ion batteries have to come up with their own specific protection and management tools. For the residential usage, Schneider Electric offers Lithium Ion UPS solutions such as APC Back-UPS Pro 500 Lithium Ion UPS.



Lithium-ion Battery System Operation & Maintenance Manual\_U6A4\_UL.pdf Related products. Product Ranges: Galaxy Lithium-ion Battery Systems I'd like to receive news and commercial info from Schneider Electric and its affiliates via electronic communication means such as email, and I agree to the collection of information on the opening and



Schneider Electric Global. Discover Galaxy VX; the highly efficient 3-Phase UPS with flexible operating modes for large facilities, data centers and business-critical applications Lithium-ion battery prices have decreased over the years and are now becoming a viable option for data center UPS. This paper provides a brief overview of li-ion