



MidNite Solar E-Panel for a single Schneider Electric Conext SW Inverter Charger and 4 panel mount or DC-GFP80 breakers. Massive tin plated copper bus bars directly connect to the SW???????s battery terminals, bus bars for AC inputs, AC ???



White Steel with 250a/125 VDC Inverter Breaker for Slave XW+ Inverter. Note: The Inverter and charge controller are not included with the E-Panel. This E-Panel is set up for a slave configuration. This is for a system in which you plan to have ???



Shop for Midnite Solar MNE250SW at Inverter Supply for best prices online. Midnite Solar MNE250SW, Midnite Solar, MNE250SW, E-Panel for Schneider Electric Conext SW, Midnite Installation Supplies . 888-606-2149. Log In; Order Status. About. Contacts. Manufacturers; AIMS Power. AIMS 12 Volt Off Grid Solar Kits;

SCHNEIDER INVERTER CONNECTED TO MIDNITE SOLAR



NOTE: Note: All E-Panels now come with a side plate that accommodates up to three panel mount breakers like the MNEDC80 or two panel mount breakers and DC-GFP80. These side plates also accommodate the OB Flexnet battery status monitor on 14.5 chassis versions. All OB E-Panels come with a Mate mounting bracket, PV+ busbar and 100 amp bat + busbar.



The MidNite Solar Surge Protector Device (MNSPD) is a Type 1 device per UL1449 rev3. It is designed for both AC and DC systems and provides protection to service panels, load centers or where the SPD is directly connected to the electronic device requiring protection. Solar Surge Protector 115V - MNSPD115



The Midnite Solar Classic lines of MPPT charge controllers will substantially increase the flexibility, features and range currently found on MPPT controllers. The MidNite Classic charge controller is unique in its ability to be used for a great variety of DC input sources.

SCHNEIDER INVERTER CONNECTED TO MIDNITE SOLAR



The complete Schneider system that contains everything the Sol-Ark 15K contains would be nearly \$10,000 in price and very expensive to hookup due to it's complicate nature. The Sol-Ark 15K would cost about \$8500 and offer you the more Surge power than the Schneider and it's normal running power would be 15KW versus the 6.8KW of the Schneider.



Schneider Electric Conext XW Pro 6848 hybrid inverters, easy installation in battery based and grid tie systems. The XW Pro comes with a 5-year warranty is listed to UL1741-SA standard and can be installed and connected to utilities in areas where that is required, such as California Rule 21. The XW Pro solar hybrid inverter bridges the



The MidNite Solar 600V Surge Protector Device (MNSPD) is a Type 1 device per UL1449 rev3. load centers or where the SPD is directly connected to the electronic device requiring protection. Offered in three different voltages to maximize the required protection level Environmental Rating - Type 4X (Outdoor) Warranty - 5 yrs. Listed by ETL

SCHNEIDER INVERTER CONNECTED TO MIDNITE SOLAR



MidNite Solar MNSW4048-UPS. This Inverter can only ship via freight truck. If you have any questions about shipping methods, please email us or call us at 800 383-0195.. Pre Wired Schneider Electric Conext SW4048 120/240 vac Inverter for UPS.



MidNite Solar pre-wired inverter systems offer a turn-key solution to installing a battery-based inverter system, saving you time in the field. With a pre-wired solution, This system uses the ???



This is a MidNite E-Panel for a single Schneider Electric XW Plus 5548 or 6848 inverter/charger. DCGFP63 or AC breakers and 12 panel mount or DC-GFP80 breakers. Massive tin plated copper bus bars directly connect to the XW's battery terminals Bus bars for AC inputs, AC output, neutral, ground, PV + in, PV- in, Bat +, Bat- 500 amp shunt

SCHNEIDER INVERTER CONNECTED TO MIDNITE SOLAR



MidNite Solar pre-wired inverter systems offer a turn-key solution to installing a battery-based inverter system, saving you time in the field. With a pre-wired solution, all of the confusion is taken out of selecting all the right parts. ???



A MidNite Solar E-panel is an AC/DC Disconnect Box that has the Inverter installed on the door of the. They are made for a single Schneider Electric Conext SW inverter/charger. The SW inverter is mounted. Massive tin plated copper bus bars directly connect to the SW's battery terminals, bus bars for AC inputs, AC output, neutral, ground

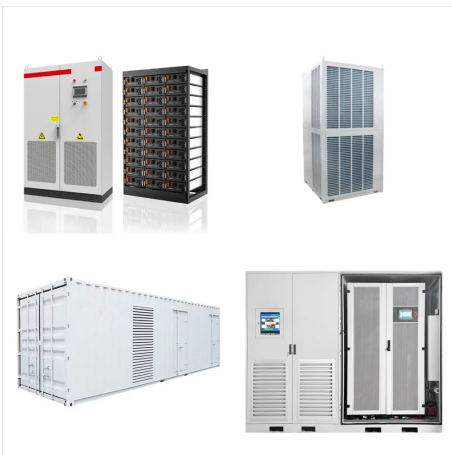


MidNite Solar MNE175SW E-Panel for Schneider Electric Conext SW Inverter/Charger. and 4 panel mount or DC-GFP80 breakers. Massive tin plated copper bus bars directly connect to the SW's battery terminals, bus ???

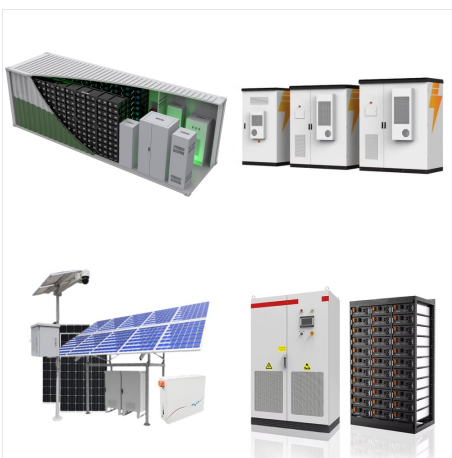
SCHNEIDER INVERTER CONNECTED TO MIDNITE SOLAR



MidNite Solar Classic Owner's Manual Firmware rev 1933 Safety for Inverters, Converters, Controllers and Interconnection System Equipment for Use With Distributed Energy Resources, Second Edition, May 7, bonded together directly but are connected together by the Classic's internal GFP device. All negative conductor



Shop now for MidNite Solar MNSW4024-UPS Pre-Wired Inverter System 24VDC 4000W. 713-869-4656. MON ??? FRI: 9:00 AM ??? 5:00 PM CST. Schneider Inverters and components in this system are covered by their manufacturer's warranty. Stay Connected. Visit Us On Marketplaces. Customer Satisfaction. Safe & Secure Shopping. About Us;



MidNite Solar is an innovative manufacturing company that started by making high-quality, cost-effective AC and DC disconnect boxes for the alternative energy industry. Now, MidNite produces a wide range of alternative energy products. A new line of MidNite products being developed is the MNB17-F5 and the MNB17-F3.

SCHNEIDER INVERTER CONNECTED TO MIDNITE SOLAR

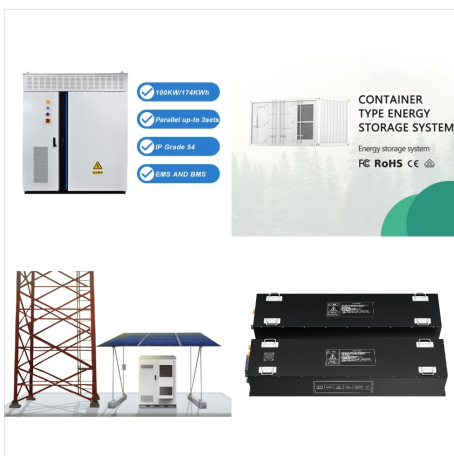


View and Download MidNite Solar MN5048DIY user manual online. Hybrid Inverter / Charger.

MN5048DIY inverter pdf manual download. Inverter MidNite Solar The all in ONE MN 15-12KW-AIO Installation Manual And User's Manual. Please connect the ground wire first, and then the hot wire and then the neutral wire. 10-539-1 MN5048DIY REV - 12 of

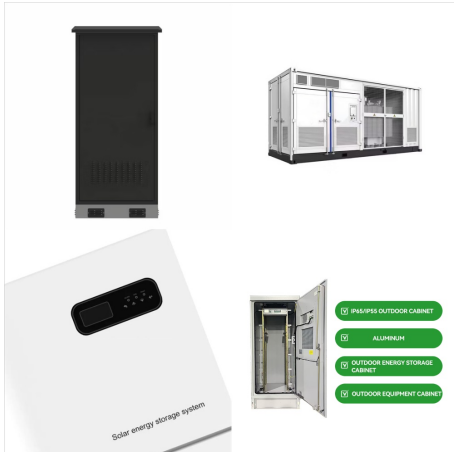


MidNite Solar MNE250SW, The MNE250SW is an E-Panel for a single Schneider Electric Conext SW inverter/charger. The SW inverter is mounted directly to the right of the E-Panel. and 4 panel mount or DC-GFP80 breakers. Massive tin plated copper bus bars directly connect to the SW's battery terminals, bus bars for AC inputs, AC output



MidNite Solar pre-wired inverter systems offer a turn-key solution to installing a battery-based inverter system, saving you time in the field. With a pre-wired solution, all of the confusion is taken out of selecting all the right parts. MNXWP6848-CL150

SCHNEIDER INVERTER CONNECTED TO MIDNITE SOLAR



The XW Series hybrid inverter/chargers have an innovative, integrated design that minimizes external balance-of-system components allowing for quick and easy installation as either a grid-tie battery backup system or a fully off-grid ???



MidNite Solar Surge Protection Devices are type 1 devices, designed for indoor and outdoor applications. Engineered for both AC and PV DC electrical systems, they provide protection to service panels, load centers or electronic devices that are directly connected to a MidNite Surge Protection Device (SPD).

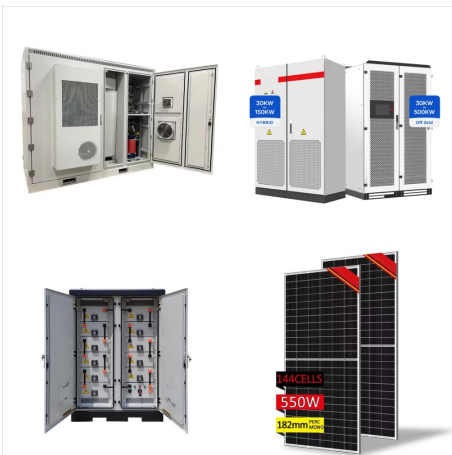


MidNite Solar pre-wired inverter systems offer a turn-key solution to installing a battery-based inverter system, saving you time in the field. With a pre-wired solution, all of the confusion is taken out of selecting all the right parts. MNSW4024-CL150

SCHNEIDER INVERTER CONNECTED TO MIDNITE SOLAR



This is a MidNite E-Panel for a single Schneider Electric XW Plus 5548 or 6848 inverter/charger. The XW Plus inverter is mounted directly above the E-Panel for a 16 in wide assembly. DCGFP63 or AC breakers and 12 panel mount or DC-GFP80 breakers. Massive tin plated copper bus bars directly connect to the XW's battery terminals Bus bars for



MidNite Solar's pre-wired inverter systems offer easy solutions to installing a battery based inverter system. The confusion of selecting the right parts is completely eliminated when using a pre-wired inverter system, saving you time and money! Call us Toll Free 888-826-0939 if you have any questions about pre-wired inverter systems!



Our website uses cookies delivered by us and by third parties. Some cookies are necessary for the website's operation, while others can be adjusted by you at any time, in particular those which enable us to understand the performance of our website, provide you with social media features, and deliver a better experience with relevant content and advertising.