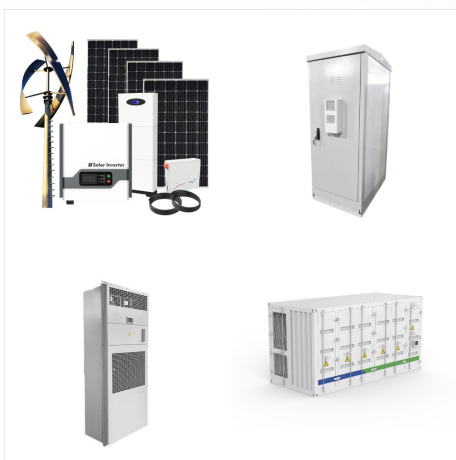




With this in mind, we recommend you replace your faulty Sharp inverter with a 1.5kW solar power inverter. The Fronius Galvo 1.5 is our pick as it comes with an excellent warranty and is the perfect size to replace the Sharp JH1600. The Sharp JH1600E is a 1.6kW inverter sold between 2012 and 2013 in Australia by Sharp Corporation, a Japanese



Do you have a Sharp JH1600 solar power inverter showing a D-27 fault code on the screen? Find out what can be done with Gold Coast Solar Power Solutions. Skip to content. Need more information on Sharp JH1600E solar inverters? Checkout the below. For more information on Sharp JH1600E solar inverters including inverter datasheets, manuals,



Sharp Solar Inverter Model JH1600E ??? F01 Fault Reading. Energy bill higher than usual? Installer gone broke? Out of manufacturer's warranty by just a few months? Below are some suggested solutions for Sharp Solar Inverter Model JH1600E Inverter Blank Screen problem: 1. Plugs and cables are connected, especially to the AC isolate and

SHARP JH1600E SOLAR INVERTER



Seller: rrr_iesales ?,? (389) 100%, Location: Silverwater, NSW, AU, Ships to: AU, Item: 266947343605 Sharp JH1600E Solar Inverter. Our Service Centre is the only Service Centre in Australia that is Authorised by the Sharp Corporation of Australia Pty Ltd to repair the Sharp JH1600e. Sharp JH1600E 1.6Kw Solar Inverter



If your Sharp JH1600 inverter was installed by someone other than Origin or you have given up on receiving decent service from Origin the best thing to do is replace the faulty inverter with a quality 1.5kW solar power inverter. Need more information on Sharp JH1600E solar inverters? Book a Service. Call. 1300 182 050. Email. info@saegroup



Clenergy inverters are another brand of solar inverter that we replace on a regular basis. Most Clenergy's out there are now outside of their 5 year warranty . In this example we replaced the Clenergy SPH15 with a Fronius Galvo 1.5, and again we would now replace a 1.5kw inverter with either a Goodwe or SMA.



item 4 Sharp Solar Inverter JH1600E - Display Cover Label Sharp Solar Inverter JH1600E - Display Cover Label. AU \$35.00. Free postage. Best Selling in Alternative Energy Chargers & Inverters. See all. Current slide {CURRENT_SLIDE} of {TOTAL_SLIDES}- Best Selling in Alternative Energy Chargers & Inverters.



Inverter Service has been repairing electronic equipment and Solar Inverters across Australia since 1975. We have worked with many of the leading electronic goods manufacturers and distributors world wide, namely Canon, Clenergy, Origin, Panasonic, Sharp and Sony. Sharp JH1600E Repair Service. Your Sharp Inverter can be repaired or replaced



Sharp JH1600E Solar Grid Inverter 1.6 kW 1600W | Reconditioned. Sell IT1212 (946) 98.3% positive; Seller's other items Seller's other items; Contact seller; Solar Inverter Panels, Off-Grid Alternative Energy Chargers & Inverters, Off-Grid Solar Panels & Kits, Solar Inverter Generators,



However, the out-of-pocket expenses involved in this process are usually higher than buying a new inverter. With this in mind, we recommend you replace your faulty Sharp inverter with a 1.5kW solar power inverter. The Fronius Galvo 1.5 is our pick as it comes with an excellent warranty and is the perfect size to replace the Sharp JH1600.



The Sharp JH1600E is a 1.6kW inverter sold between 2012 and 2013 in Australia by Sharp Corporation, If your inverter is less than 5 years old, If the AC isolator and the solar supply main switch located in the meter box are on, the problem could come from the AC fuse. If the fault appears intermittently, it is indicative of a high grid



Wiring Solar Power Inverter ??? All of the procedure must be completed by a qualified electrician. ???
Wiring the solar power inverter and the DC disconnect enclosure must be performed using ???



Sharp JH1600E Solar Inverter (#266774096395)
i***i (424) - Feedback left by buyer. Past month.
Verified purchase. Always good to deal with,
excellent seller and great products. Very prompt
delivery. Fantastic. 5 star +. Thank you. Sharp
JH1600E Solar Inverter (#266774096395)



Sharp JH1600E Solar Inverter (#266624519795)
0***3 (796) - Feedback left by buyer. Past year.
Verified purchase. Good connector, well packed and
posted quickly. Would buy from this seller again -
highly recommended. AC Power connector - Solar
Inverters (#266161256062) See all ???



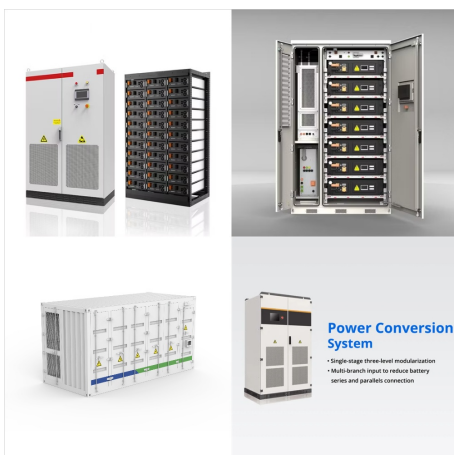
Solar Inverter Repairs. Sharp, Clenergy,
Aero-Sharp, CMS and more. We offer Australia
wide shipping of all Inverter units. Sharp JH1600E,
AeroSharp HR-INV-X01-015 Clenergy SPH15
SPH20 SPH30 CMS2000 Samil Solar River and
Samil ???



Sharp JH1600E Inverter: D-27 Fault Submitted by Nedjma.Loucif on Thu, 20/04/2017 - 11:48. Have you At this point, it is also worthwhile considering whether to upgrade to a bigger inverter to increase the output of your solar power system. We can guide you through this process, taking into account your current system and your future power



If your Sharp JH1600 inverter is stuck on a D21 fault the best thing to do is replace the faulty inverter with a quality 1.5kW solar power inverter. We recommend the Fronius Galvo 1.5 as a nearly bulletproof replacement unit with a long 10 year parts warranty that is perfectly sized to replace the Sharp JH1600. Sharp d-21 Fault ??? What To Do



View and Download Sharp JH-1600E service manual online. Solar POWER CONDITIONER. JH-1600E ac power distribution pdf manual download. Sign In Upload. Download Table of Contents Contents. Add to my manuals. Solar power inverter (27 pages) Summary of ???



?? Make sure that the lower side of the solar power inverter has 1500 mm and the front side has 700 mm clearance for the electrician to operate. ?? Make sure that the solar power inverter is installed plumb and level. ?? Never install the solar power inverter upside down. ?? Never install the solar power inverter horizontally or tilted.



The simplest way to replace your faulty Sharp inverter is to arrange an inverter health check with Solargain. One of our qualified technicians can inspect your system, confirm if a d-21 fault is occurring and, if so, can install a replacement unit, all in the one visit. We recommend replacing this particular model with a 1.5kW solar power inverter.