

What causes a D-27 error on a sharp inverter?

Unfortunately the D-27 error is a major internal fault with the inverter and the official response from Sharp to this code is: "the D-27 fault is caused by excessive voltage transients on the input or output of the inverter. It is highly likely that an external factor such as Lightning or Power surge on the Grid is the root cause of this issue.

Why does my sharp jh1600 have a D-27 error?

Have you just walked past your Sharp JH1600 solar inverter and been greeted with a D-27 fault on the screen? Unfortunately the D-27 error is a major internal fault with the inverter and the official response from Sharp to this code is: "the D-27 fault is caused by excessive voltage transients on the input or output of the inverter.

What causes a D-27 fault on a sharp jh-1600e inverter?

The D-27 fault on the sharp jh-1600e inverter is caused by failed (burned out contacts) of the mains disconnect relay, this relay is mounted on the main circuit board directly under the front control pcb.

What's wrong with my sharp jh-1600e solar inverter?

A common fault with Sharp JH-1600E solar inverters is the dreaded D-27 error. The D-27 error in the words of the Sharp warranty people are caused by an "extraneous event", or in everyday language, something other than the inverter. This means it won't be covered by warranty and it won't be doing anything until it is fixed - at your cost.

Is the sharp D-27 a warranty fault?

As Sharp are stating that the D-27 fault is caused by an external factor they are wiping their hands of all responsibility, so you can pretty much read into this that it's a fault that Sharp will not be covering under warranty.

What is a D-27 fault?

A D-27 fault is an electrical fusion caused by excessive voltage transients on the input or output of the inverter. It is generally caused by an extraneous event such as a lightning strike or a power surge on the grid.

# SHARP SOLAR INVERTER D27 ERROR



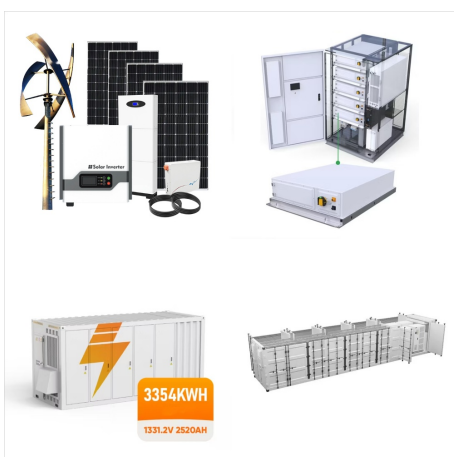
Will a D-27 fault be covered by my warranty or household insurance? Sharp's warranty does not cover D-27 faults.



Just came home to a D27/ E27 Fault on my Sharp JH1600E Inverter which is 1 year out of warranty. Before paying for someone to come out and fix/replace it I was menu Whirlpool Go to navigation. Whirlpool. Search. Forums. Energy. Solar. Repair/ Replace Sharp JH1600E Inverter or Upgrade? Archive View Return to standard My JH1600E showed

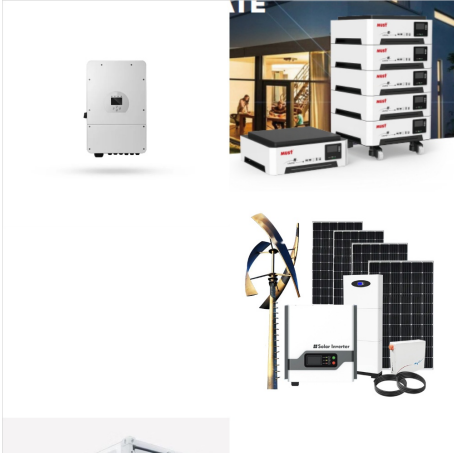


Check The solar power conditioner is in normal status. Action Wait until the utility grid recovers. The solar power conditioner will restart automatically. Case.2 Cause The solar power conditioner stops unnecessary. Check Confirm that the solar power conditioner restarts, and check the status when F-07 occurs.



The Sharp is a transformer inverter, and there are now no current transformer inverters on the market in South Australia, so we will need to replace the inverter with a transformerless model. Unfortunately this is not a ???

# SHARP SOLAR INVERTER D27 ERROR



One of the common issues with this inverter is a Sharp JH1600E Solar Inverter F-01 Fault Code. Let's have a look at what you can do about this. When you see the F-01 fault code it means that the utility is under voltage or that the power from the street (grid) is too low or none at all.



Without a solar inverter, the electricity generated by the solar panels would be useless for powering appliances and devices. Types of solar inverters. There are several types of solar inverters available on the market, including grid-tie ???



Sharp inverters can sometimes be quite complicated. That's why you must have them attended by CEC-accredited electricians from a trusted solar maintenance company. To ensure your inverter is repaired properly and quickly at a reasonable cost, call us at Solar Uptime any time.

# SHARP SOLAR INVERTER D27 ERROR



If your Sharp JH1600 inverter is stuck on a D21 fault the best thing to do is replace the faulty inverter with a quality 1.5kW solar power inverter. We recommend the Fronius Galvo 1.5 as a nearly bulletproof replacement unit with a long 10 year parts warranty that is perfectly sized to replace the Sharp JH1600. Sharp d-21 Fault ??? What To Do



Adelaide Solar Repairs was established in 2011 by Patrick and Jackie, who were already working in the solar industry, and they saw more and more solar companies closing, and inverter manufacturers disappearing and not honouring warranties. After more than 8000 repairs, they can call themselves the leading solar repair company in Adelaide.



Have you just walked past your Sharp JH1600 solar inverter and been greeted with a D-27 fault on the screen? Unfortunately the D-27 error is a major internal fault with the inverter and the official response from Sharp to this code is: "the ???"



# SHARP SOLAR INVERTER D27 ERROR



Sharp solar panels are operating in many areas; from family homes and installations in extreme environments such as lighthouses and satellites, to recently completed megawatt-scale solar power plants. "Sharp's innovation and developments into module technology over half a century have allowed us to always improve and adapt to market circumstances.



Whether you're a homeowner with a Growatt inverter or a solar installer dealing with these devices, understanding the potential challenges and how to address them is crucial for maintaining optimal performance and longevity of your solar investment. Common Growatt Inverter Problems. Growatt inverters, while generally reliable, can experience



Aero Sharp inverter models repair guide Home This repair guide for Aero Sharp solar energy system inverters aims to assist troubleshooting. It's not intended to be a comprehensive user guide. Call for more Aero-Sharp provides transformer-based inverters which can provide an output of 1kW, 1.5kW, 2kW, as well as 3kW. Their units usually come with [???

# SHARP SOLAR INVERTER D27 ERROR



Heat exchanger thermistor open circuit error: 5-1:  
Outdoor temperature thermistor open circuit error:  
5-2: Suction thermistor open circuit error: 5-3: 2-way  
valve thermistor open circuit error: 5-4: Discharge  
thermistor open circuit error: 5-5: Heat sink  
thermistor open circuit error: 6-0: DC over current  
error: 6-1: IPM pin level error: 7-0



Do solar inverters need maintenance? Solar  
inverters are designed so that they require little to  
no maintenance. However, like every other home  
appliance, using your solar inverters with care will  
make them function optimally and last longer. Here  
are a few maintenance tips for solar inverters.



Aero-Sharp was a Canadian based, Chinese owned  
solar company that produced solar system  
components and parts for both residential and  
commercial arrangements of all sizes. Aero-Sharp  
no longer trades in Australia and has gone into  
liquidation, however, the Aero-Sharp solar inverters  
may still form a part of your solar system.

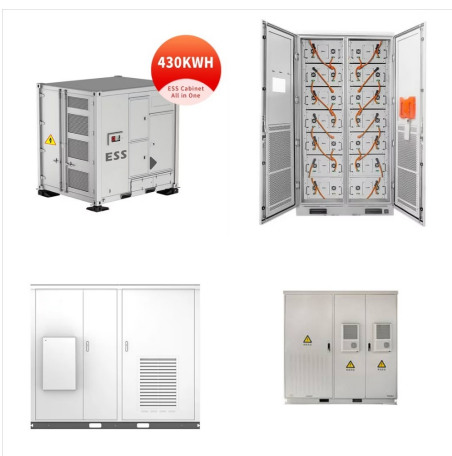
# SHARP SOLAR INVERTER D27 ERROR



Common causes of solar inverter failure! We get lots of people asking us for a quote for a new solar inverter. While we can offer a free inverter quote, there usually more to the issue than just the solar inverter. We estimate out of 10 solar inverter faults more than 70% are caused by other issues within the system. Some of these issues include:

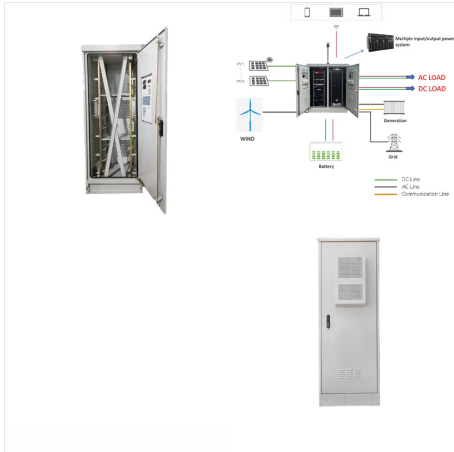


About Aero-Sharp inverters. Aero-Sharp inverters have been installed in Australian households since as early as 2008, however, sadly they have since gone out of business. Their transformer-based inverters came in the following sizes: 1kW; 1.5kW; 2kW; 3kW; While most Aero-Sharp inverters came with a five-year warranty, some came with a



Customer: I have a sharp solar inverter installed in 2010. I noticed yesterday that the LED display shows d - 27 and the red light over the word event is showing. Please advise what I need to do to start to regenerate my solar power. I reside in Eagleby, Queensland. Barbara Grozinger

# SHARP SOLAR INVERTER D27 ERROR



About Aero Sharp Aero Sharp was a transformer-based solar inverter company located in Ontario, Canada serving the residential and commercial markets both on a local and international scale (this included Australia). The company was actually Chinese-owned as it was part of China AVIC Avionics Equipment Co. Ltd (now China Avionics Systems Co. Ltd), but it doesn't appear to [???



Sharp JH1600E 1600Watt Solar Inverter . A trusted brand for decades and a manufacturer recognised for producing quality solar panels, the JH1600E solar inverter showcases Sharp's know-how in all things solar. With half a century of solar research and development under its belt, buying a JH1600E solar inverter means you can rest assured of



Sunny Boy Inverters. SMA Solar Technology is based out of Germany and is the world's largest producer of solar inverters, with 40% of the global market share. Their Sunny Boy line is ideal for home rooftop systems, but can also be used with midrange installations up to ???



# SHARP SOLAR INVERTER D27 ERROR



Mains voltage too high - By default, Aero-Sharp inverters are set to shut down if the grid voltage exceeds 260v. When this happens, a "Grid Volt Error" message appears and no power will be exported. This can occur in some distribution areas, particularly in Western Australia. In this case, the installer will need to re-program the inverter to