



Isolates the AC power from the solar power inverter. The JH-1600E incorporates anti-islanding in accordance with AS 4777. The JH-1600E has a detector circuit to sense ground faults from the ???



Do you have a Sharp JH1600 solar power inverter showing a D-27 fault code on the screen? Find out what can be done with Gold Coast Solar Power Solutions Need more information on Sharp JH1600E solar inverters? Checkout the below. For more information on Sharp JH1600E solar inverters including inverter datasheets, manuals, fault codes etc



Sharp JH1600E Solar Inverter (#266774096395)
1***s (66) - Feedback left by buyer. Past 6 months.
page Return to top. More to explore: Solar Inverter
Panels, Solar Inverter Generators, Sharp Alternative
Energy Chargers & Inverters, Sharp Solar Power
Accessories, Off-Grid Solar Alternative Energy
Chargers & Inverters, Latronics Alternative

SHARP SOLAR POWER INVERTER JH1600E



Sharp JH1600E Inverter: D-27 Fault Submitted by Nedjma.Loucif on Thu, 20/04/2017 - 11:48. Have you To have your faulty inverter replaced as soon as possible and for a full inspection of your solar power system, book your inverter health check online or give us a call on 1300 73 93 55.



Sharp JH1600E Solar Grid Inverter 1.6 kW 1600W | Reconditioned. Sell IT1212 (946) 98.3% positive; Seller's other items Seller's other items; Contact seller; Solar Inverters; Growatt Inverter; Power Inverter; Inverters; Inverter Off Grid; 500w Inverter; Additional site navigation. About eBay; Announcements; Community; Media Centre;

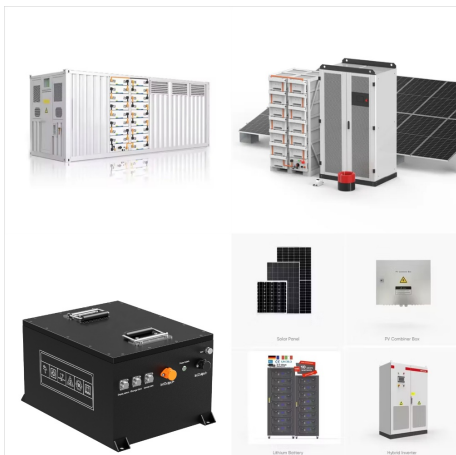


Solar Inverter Repairs Australia. Sharp, Clenergy, Aero-Sharp, CMS and more. We offer Australia wide shipping of all Inverter units. Sharp JH1600E Repair Service. Contact Inverter Service today to continue enjoying the benefits of solar power. Yes Please! Need a Quick Quote? INVERTER SERVICE (C)2016 by Inverter Service. Inverter Service

SHARP SOLAR POWER INVERTER JH1600E



Inverter Sharp JH-1600E Installation & Operation Manual. Solar power inverter (27 pages) Summary of Contents for Sharp JH-1600E. Solar power conditioner specifications Model JH-1600E Maximum system voltage 350 V Rating input voltage (DC) 240 V Range of operating DC voltage(DC) 60~320 V Maximum array short circuit current(DC) 10A Maximum



One of the common issues with this inverter is a Sharp JH1600E Solar Inverter F-01 Fault Code. Let's have a look at what you can do about this. When you see the F-01 fault code it means ???



2 x Sharp JH1600E solar inverters, by memory both threw code D21 One as new condition was installed to replace the older inverter but only lasted 3 months before it stopped working and showed code D21, Selling AS IS so could be repaired or good for parts TV, internet and lighting, perfect for power outages very quite. \$800 Negotiable.

SHARP SOLAR POWER INVERTER JH1600E



Clenergy inverters are another brand of solar inverter that we replace on a regular basis. Most Clenergy's out there are now outside of their 5 year warranty . In this example we replaced the Clenergy SPH15 with a Fronius Galvo 1.5, and again we would now replace a 1.5kw inverter with either a Goodwe or SMA.



General Maintenance Replace Power Points and Light Switches; Fault Finding & Safety Switches Tripping; General Lighting; Rewire; Sharp Solar Inverter Model JH1600E ??? F01 Fault Reading. Energy bill higher than usual? Below are some suggested solutions for Sharp Solar Inverter Model JH1600E Inverter Blank Screen problem: 1. Plugs and



If a Sharp JH1600E Solar Inverter has a fault, a code would usually be displayed on its screen to indicate that there's something wrong. One of the common issues with this inverter is a Sharp JH1600E Solar Inverter F-01 Fault Code. When you see the F-01 fault code it means that the utility is under voltage or that the power from the

SHARP SOLAR POWER INVERTER JH1600E



If your Sharp JH1600 inverter is stuck on a D21 fault the best thing to do is replace the faulty inverter with a quality 1.5kW solar power inverter. We recommend the Fronius Galvo 1.5 as a nearly bulletproof replacement unit with a long 10 year parts warranty that is perfectly sized to replace the Sharp JH1600. Sharp d-21 Fault ??? What To Do



Sharp Manuals; AC Power Distribution; JH-1600E; Sharp JH-1600E Manuals Manuals and User Guides for Sharp JH-1600E. Solar Power Inverter Wiring Overview. 14. Connecting to DC Disconnect. 15. Connecting to AC Disconnect. 17. Test Run. 19. Checking the PV Array DC Voltage. 19. Checking the AC Utility Voltage. 19.



The simplest way to replace your faulty Sharp inverter is to arrange an inverter health check with Solargain. One of our qualified technicians can inspect your system, confirm if a d-21 fault is occurring and, if so, can install a replacement unit, all in the one visit. We recommend replacing this particular model with a 1.5kW solar power inverter.

SHARP SOLAR POWER INVERTER JH1600E



item 1 Sharp JH1600E Solar Grid Inverter 1.6 kW 1600W | Reconditioned Sharp JH1600E Solar Grid Inverter 1.6 kW 1600W | Reconditioned. AU \$249.99 Failed E21 or d21 error, power company didn't tell me and didn't care, panels sat unused for years I just replaced it with an old sunnyboy 1700 running in tandem with my new 5kw system



Solar Inverter. Sharp Corporation of Australia 1 Huntingwood Drive, Huntingwood, NSW 2148. Phone: (02) 9830 4600 E-mail: sales@sharp JH-1600E ??? 1.6kW SOLAR INVERTER In the absence of confirmation by device specifications sheets, Sharp takes no responsibility for any defects that may occur in Power Factor >0.99

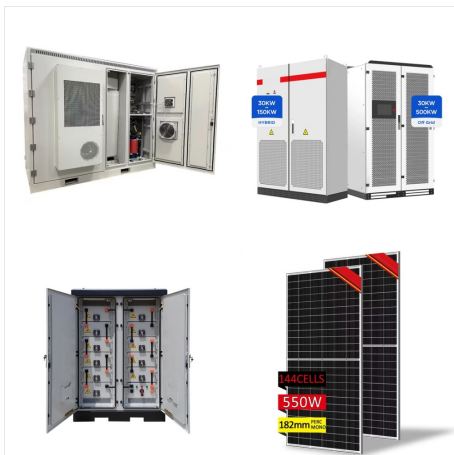


If your Sharp JH1600 inverter was installed by someone other than Origin or you have given up on receiving decent service from Origin the best thing to do is replace the faulty inverter with a quality 1.5kW solar power inverter. We recommend the Fronius Galvo 1.5 as a nearly bulletproof replacement unit with a long 10 year parts warranty that

SHARP SOLAR POWER INVERTER JH1600E



With this in mind, we recommend you replace your faulty Sharp inverter with a 1.5kW solar power inverter. The Fronius Galvo 1.5 is our pick as it comes with an excellent warranty and is the perfect size to replace the Sharp JH1600. The Sharp JH1600E is a 1.6kW inverter sold between 2012 and 2013 in Australia by Sharp Corporation, a Japanese



Solar Inverter Repairs. Sharp, Clenergy, Aero-Sharp, CMS and more. We offer Australia wide shipping of all Inverter units. SOLAR POWER INVERTER REPAIR SERVICE CENTRE. Save Money, repair your Inverter, don't replace it. We can repair your: Sharp JH1600E, AeroSharp HR-INV-X01-015 Clenergy SPH15 SPH20 SPH30 CMS2000



Sharp JH1600E Solar Inverters. by Jackie Robinson | Aug 29, 2016. Just recently we have been contacted by lots of customers with a Sharp JH1600E inverter, and it's not working. (the power from the street). It is possible that when the grid conditions change your inverter will start working again.

SHARP SOLAR POWER INVERTER JH1600E



Sharp models we service: Sharp JH1600E; Modern Sharp solar inverters are a complicated piece of equipment and so it's essential that they are repaired properly. At National Solar Services, National Solar Services team is dedicated to helping Aussies enjoy solar power for the life of their system.