

Is Topray Solar a publicly traded company?

Topray Solar (Chinese: 天普阳光; pinyin: Tuānpǔ Yángguāng) is a vertically integrated solar energy company with global presences in Africa, Europe, Asia and North America. It is a publicly listed company on China Shenzhen Stock Exchange (Stock Ticker: 002218) with a market cap over 1 Billion USD.

Where is Topray Solar located?

Topray Group consists of 25 subsidiary companies in America, Germany, Uganda and China. Topray solar has five major industrial bases, located in Shenzhen, Sichuan, Shanxi, Xinjiang, Qinghai. Topray solar is committed to provide the best products and service for global customers. Topray Solar |948 followers on LinkedIn.

Who is Shenzhen Sunray power?

Focus on R&D and manufacturing of science and technology, bring you the latest frontier products of science and technology Shenzhen sunray power Co., Ltd. was established in 2004 with the registered trademark of SUMRY.

How many employees does Topray Solar have?

Topray Solar has 4 employees across 6 locations and \$1.25 b in annual revenue in FY 2022. See insights on Topray Solar including office locations, competitors, revenue, financials, executives, subsidiaries and more at Craft.

What is the production capacity of Topray Solar?

Topray group has its production capacity of 2GW solar glass, 1GW solar cell, and 2GW solar module respectively. Topray solar will build and hold 1GW photovoltaic power station in the coming few years. Topray Group consists of 25 subsidiary companies in America, Germany, Uganda and China.

How many patents does Topray Solar have?

Topray solar owns 174 authorized patents, of which are 12 invention patents authorization. Topray solar has the most complete amorphous silicon photovoltaic industry chain. The products passed the pre-shipment inspection by TUV, ITS, SGS, STC and awarded the certification of IEC61215 and IEC61730.



Shenzhen Tuori New Energy Technology Co., Ltd. was established on August 15, 2002 with a registered capital of 1.236 billion yuan. Topray solar delivers the most robust module design with impenetrable glass packaging No frame, no back sheet. Use only 2.5mm thermally tempered glass as front and back protection casing



Shenzhen Topray Solar (Chinese: ; pinyin: Tu?r?) is a vertically integrated solar energy company with global presences in Africa, Europe, Asia and North America. [1] It is a publicly listed company on China Shenzhen Stock Exchange (Stock Ticker: 002218).. In 2017, the European Commission alleged that Topray Solar had repeatedly violated the minimum price agreement ???



COMPANY OVERVIEW Topray Solar Group (stock code 002218:SZSE) is one of the most experienced manufacturers of photovoltaic products in China since 1992 with fully vertically integrated solar manufacturing lines of crystalline solar ingot, wafer, cells, modules and ???



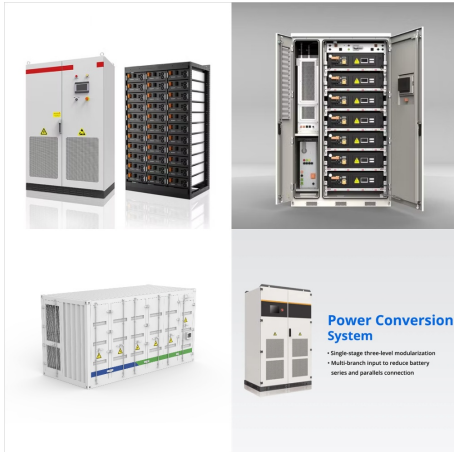
Shenzhen Topray Solar Co., Ltd., Series Voltage Regulators, Series Voltage Regulators, China, Shenzhen, Shenzhen Topray Solar Co., Ltd. was established on August 15, 2002 with a registered capital of 1.236 billion yuan. It was listed on the Shenzhen Stock Exchange on February 28, 2008 (stock code 002218). It is the first pure A-share listed company



Note: Your Enquiry will be sent directly to Shenzhen Topray Solar Co., Ltd.. Alternative Product STD-P Type 182mm PT Standard Maximum Power: -- Cell Type: Monocrystalline Dimensions: 182x182 mm DIAGONAL: 182±0.25 mm Cell Thickness: 140-145-150-155 um More Product Info Company Profile Product Characteristics. Model No. 4.32 4.37 4.42



Shenzhen Topray Solar Co.Ltd. All right reserved. Specifications included in this datasheet are subject to change without notice. RAYSOLAR MONO crystalline 158.75\*158.75mm MECHANICAL SPECIFICATION Cell Type Number of cells Dimensions Front Glass Frame Connector 36pcs 360x260x18mm Anodized aluminum alloy Output Cables ???



SHENZHEN TOPRAYSOLAR Co.,Ltd. Reports Earnings Results for the First Quarter Ended March 31, 2024 Apr. 29: CI SHENZHEN TOPRAYSOLAR Co.,Ltd. Reports Earnings Results for the Nine Months Ended September 30, 2023 23-10-30: CI



Shenzhen Topray Solar Co., Ltd (stock exchange code: 002218), with registered capital of 1.236 billion RMB, is the first pure solar company entered domestic capital market. Topray solar engages in developing, producing and selling solar cell, solar module, solar consumer items, solar power system. Furthermore, Topray solar invests and operates



TOPRAY Solar002218.SZ. Solar mall Group members. Ltd., project manager of Shenzhen Great Wall Certified Public Accountants Co., Ltd., Shenzhen Tuorixin Audit Manager of Energy Technology Co., Ltd. and Financial Supervisor of Shenzhen Suojia Optoelectronics Industry Co., Ltd. From November 2015 to May 2016, he has served as the company's





TOPRAY Solar is one of the earliest public listed solar energy technology enterprise in the world. With fully certified factory and branded items serve customer globally. A Public Listed Solar Company, head quartered in Shenzhen, Company group with 19 subsidiaries A known solar panel manufacturer with over 20 years experience in the PV industry.



Note: Your Enquiry will be sent directly to Shenzhen Topray Solar Co., Ltd.. Alternative Product SF-M21/132 HJT Shinefar Solar From 0.083 / Wp Technology: HJT Dimensions: 2384x1303x35 mm Weight: 33.8 kg Cell Size: 210x105 mm Glass Thickness: 3.2 mm More Product Info Company Profile Product Characteristics.



Shenzhen Tuori New Energy Technology Co., Ltd. was established on August 15, 2002 with a registered capital of 1.236 billion yuan. It was listed on the Shenzhen Stock Exchange on February 28, 2008 (stock code 002218). Topray Solar half cell operates in lower temperature, decreases the risk of hot spot and the loss due to temperature



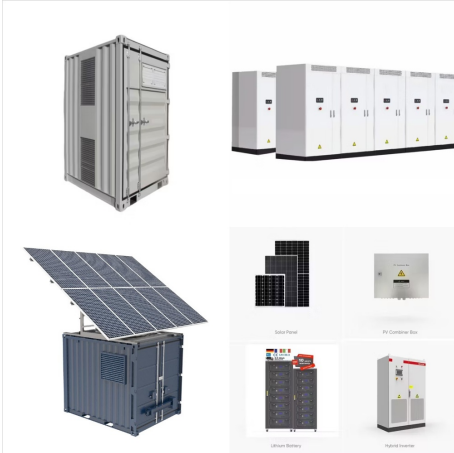
TOPRAY Solar002218.SZ. Solar mall Group members. Home; About Us. About Us. Shenzhen Tuori New Energy Technology Co., Ltd. was established on August 15, 2002 with a registered capital of 1.236 billion yuan. It was listed on the Shenzhen Stock Exchange on February 28, 2008 (stock code 002218).



Shenzhen Topray Solar Co., Ltd. 2002815,14.13 , 2008228? 1/4 ? 002218 ? 1/4 ?, A???



Shenzhen Topray Solar (Chinese: ; pinyin: Tu?r?) is a vertically integrated solar energy company with global presences in Africa, Europe, Asia and North America. It is a publicly listed company on China Shenzhen Stock Exchange (Stock Ticker: 002218). In 2017, the European Commission alleged that Topray Solar had repeatedly violated the minimum price agreement for solar products.



Shenzhen Topray Solar Co., Ltd. was established on August 15, 2002 with a registered capital of 1.236 billion yuan. It was listed on the Shenzhen Stock Exchange on February 28, 2008 (stock code 002218). It is the first pure A-share listed company in China. Solar energy companies. The company's main business is R& D, production and sales of solar



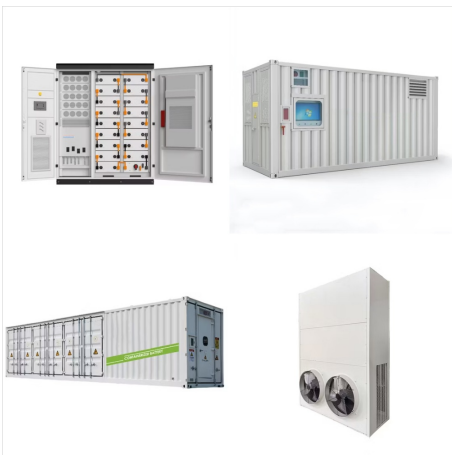
View contacts for Shenzhen Topray Solar to access new leads and connect with decision-makers. View All Contacts . Operating Status Active; Also Known As Shenzhen Topray Solar Co., Ltd, Edit Lists Featuring This Company Section. Asia Public Companies With More Than 500 Employees (Top 10K)



Shenzhen Topray Solar Co., Ltd. 2002815,14.13 , 2008228? 1/4 ? 002218? 1/4 ?, A ???



Shenzhen Tuori New Energy Technology Co., Ltd. was established on August 15, 2002 with a registered capital of 1.236 billion yuan. It was listed on the Shenzhen Stock Exchange on February 28, 2008 (stock code 002218). Topray Solar Group wishes all Women's a happy holiday! Read more. 2021-03-05 Chen Wukui, Chairman of Topraysolar, was



Topray Solar () is a company that produces and sells solar cells, solar modules, solar consumer items, and solar power systems. It offers products such as solar glass, air heaters, lighting, charger, etc. Shenzhen Shi, Guangdong Sheng. China. 4060 Qiaoxiang Rd, Hua Qiao Cheng, Nanshan Qu. Xining, Qinghai. China. Kirchheim bei



Shenzhen Topray Solar Co., Ltd. engages in the research, development, manufacture and distribution of solar cell products and accessories. It is also involved in the design, installation and