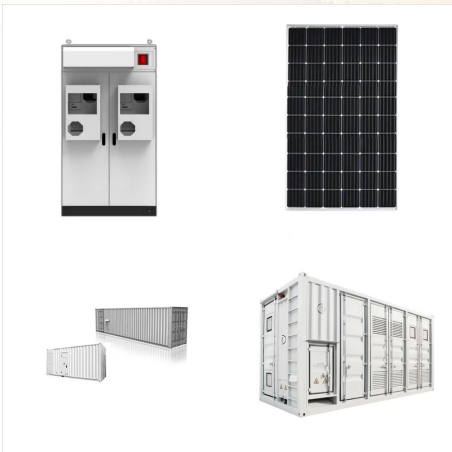


For instance, a 400-watt solar panel, under ideal conditions and receiving four hours of peak sun daily, can produce 1.6 kWh of power daily or about 584 kWh per year. By contrast, the average annual electricity consumption for a U.S. residential utility customer was over 10,600 kWh in 2021, according to the U.S. Energy Information Administration.



The Jinko Solar 425 watt monocrystalline all black module is the best in terms of power output and long-term reliability. The JKM425N-54HL4-B solar panel features 108 half-cell monocrystalline solar cells on a black backsheet with a ???



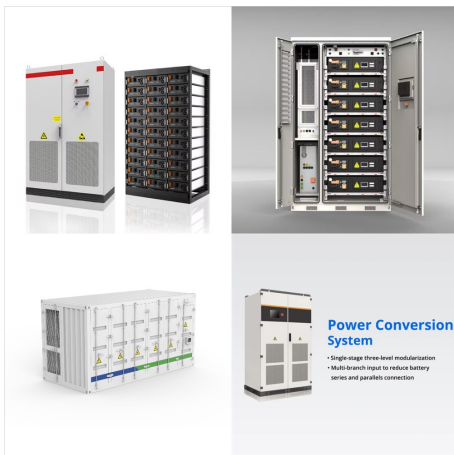
Mono Solar Panel

????,??,?????,??,?????,?????,??,??,?????
 ?,??,??,??,??,??,??,?????,??,??,-?,??,??,??,??,??
 ??, ?????,??,?????,??,?????,?????,??,??,?????
 400W
 ?????,?????,??,??,??,??,??,??,??,?????,??,?????
 Monocrystalline ?,??,,?????,? SUN400-72M-MF.
 ?????,??,?????,??,?????,?????,??,??,?????
 ?,??,??,??,??,??,??,????????,?????,?????,??,?????,
 ??,?????,?????,??,??,?????
 ?,??,?????,??,??,??,??,??,??,??,? Silicon

SIMPLE MAINTENANCE MONO PHOTOVOLTAIC MODULE 400



Bifacial Solar Panel: The 400 W Bifacial solar panel is a modern technology panel. These panels can gather sunlight from the front as well as the rear sides. Such panels have a high productivity of up to 22%. Also, these are very expensive. Pricing of a 400 Watt Solar Panel . Do you know how much a 400 watt solar panel price is?

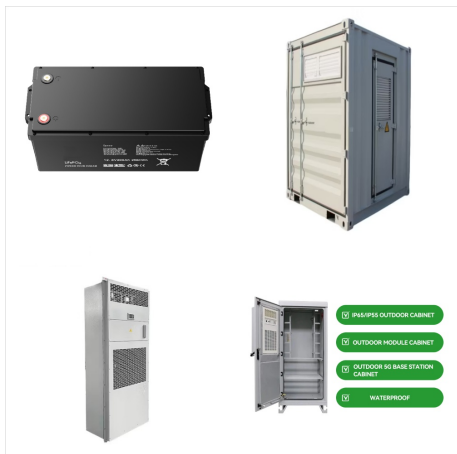


400 W is the most popular solar panel size today, with a ton of options to choose from. In this article, we list the best 400 W panels on the market. 568k 233k 41k It houses larger mono-Si solar cells and comes with integrated microinverters supplied by the industry-leader Enphase. Price: \$4.25/W; Dimensions: 71.3 x 41.2 x 1.57 in; Weight



The working of monocrystalline panels is quite simple and it starts as the sunlight hits the surface of the panel, the photons within the light interact with the silicon atoms in the solar cell which allow electrons to liberate from their atomic bonds. Mono modules have a higher efficiency rate of up to 25% as they are made from high-grade

SIMPLE MAINTENANCE MONO PHOTOVOLTAIC MODULE 400



The ZNShine Solar 370 watt monocrystalline module is the best in terms of power output and long-term reliability at an attractive low price. The ZNShine solar panel features a 9 busbar. 120 half-cell monocrystalline solar cell design with a black design.



400 Watt Phono Solar TwinPlus Module Perc Mono Crystalline 144 (2x72) Half Cell Solar Panel The Phono Solar 400 watt PERC monocrystalline XL solar panel delivers high power output and performance at an attractive low price. The PS400M1H-24/TH PERC solar panel is made up of 144 monocrystalline half-cells on a white bac



ZNShine Solar 400W Solar Panel 108 Cell ZXM7-SH108-400/M Clearance is the highest power solar module in residential US market. Look into detailed descriptions, ratings, reviews, pictures, and more. Solar panels generally require very little maintenance. We recommend cleaning the solar panel with water, glass cleaner (Windex) and microfiber

SIMPLE MAINTENANCE MONO PHOTOVOLTAIC MODULE 400



The HELIENE 72 M is a 72-cell monocrystalline photovoltaic module featuring a double-webbed 15-micron anodized aluminum alloy frame. Covered by a low-iron content, high-transmission PV solar front glass, each of the 72 monocrystalline cells measures 156 mm X 156 mm. Produced in our North American factories, the HELIENE 72 M is ???



Canadian Solar 400W Solar Panel is an all-black high density mono PERC module, which offers great power output. The module shows an efficiency of up to 19.9%, which is achieved due to higher light absorption and reduced energy loss in cable. Canadian Solar CS1Y-400MS is an ideal solution for residential rooftop installations. 400W Power Output



The Hyundai 400 watt monocrystalline all-black bifacial solar panel is a high power output, reliable panel at an attractive low price. The HiS-S400YH(BK) solar panel is made up of 132 half-cut bifacial solar cells on a black backsheet with a black anodized aluminum frame.

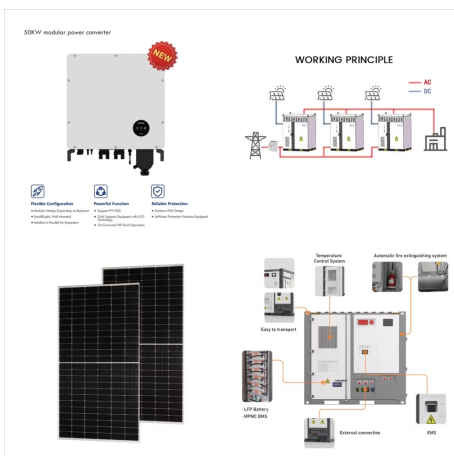
SIMPLE MAINTENANCE MONO PHOTOVOLTAIC MODULE 400



The Solaria PowerX-400R Performance Solar Panel is a high-performance, residential solar panel designed for maximum energy efficiency and reliability. With 400 watts per panel and an efficiency of over 20.5%, the PowerX-400R delivers higher power density, meaning it can generate more energy from the same rooftop area. Its advanced design features next-generation M10-based ???



60 type PV module cable length ???1.2m, 72 type PV module cable length ???1.4m, 78 type PV module cable length ???1.5m Vertical Installation: Method 1: Standard cable length Method 2: Single component cable length ???1.2m Horizontal Installation? 1/4 ?Standard cable length



Silfab Solar, a subsidiary of Italy's Silfab S.r.l., is a North American photovoltaic manufacturer of high quality monocrystalline and bifacial solar panels. Dating back to 1981, Silfab Solar has over 35 years of solar experience spanning the entire PV production chain including wafers, ingots, cells, and modules.

SIMPLE MAINTENANCE MONO PHOTOVOLTAIC MODULE 400

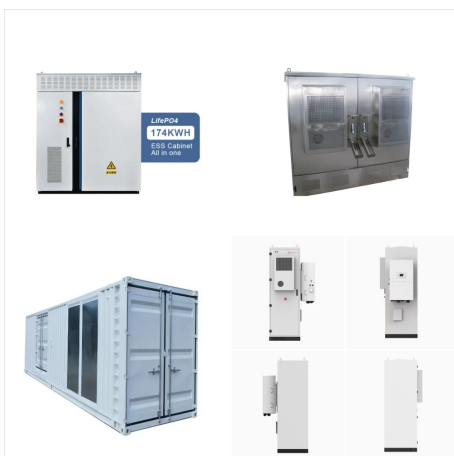


Q.PLUS - The Q.PLUS BFR-G4.1 is the Q.ANTUM solar panel with a power output of 275 to 285 watts. This solar panel is designed for rooftop solar arrays on residential, commercial, and industrial buildings, as well as ground-mounted solar power plants.

Q.POWER - The Q.POWER-G5 module has an output of 260 to 280 watts of power. This solar module



Daftar Harga Solar Panel 400wp Terbaru;
November 2024; Harga Solar Panel Surya Solarcell PV Maysun 400WP Mono Shingled. Rp2.150.000. Harga Paket 400Wp Solar Panel Polycrystalline Free Packing Kayu. Rp2.769.000. Harga Solar Panel Mono Maysun 400WP Half Cut Solarcell PV 400 WP. Rp2.200.000. Harga Solar Panel 400wp Mono Crystalline Pv Module 400W Mono ???



The Trina Vertex 415 watt module features 144 third-cut monocrystalline solar cells with bifaciality and an all-black design. Delivering higher power, the third-cell design delivers greater output and performance with a 20.8% efficiency to maximize the light absorption area.

SIMPLE MAINTENANCE MONO PHOTOVOLTAIC MODULE 400



watt solar panel is part of Axitec Solar's XXL higher performing module series, AXIbipremium XXL HC, with half-cell technology that has a lower cell resistance than standard modules. The AC-550MBT/144V premium solar panel operates at 21.29% efficiency to maximize the light absorption area.



The Trina Vertex 425 watt module features 144 third-cut monocrystalline solar cells with bifaciality and an all-black design. Delivering higher power, the third-cell design delivers greater output and performance with a 21.3% efficiency to maximize the light absorption area.



REC Solar Alpha Pure Black Series > 400 Watt Mono Solar Panel - All Black. 132 Half-cut Cell. Mono solar panel. Black back sheet, 30mm black frame. REC Alpha Pure Black modules pack ???

SIMPLE MAINTENANCE MONO PHOTOVOLTAIC MODULE 400



the mono-Si PV panel is better than that of the poly-Si PV panel. So, residential and small system users can recover the extra investment in a few years and can get profit in terms of energy and

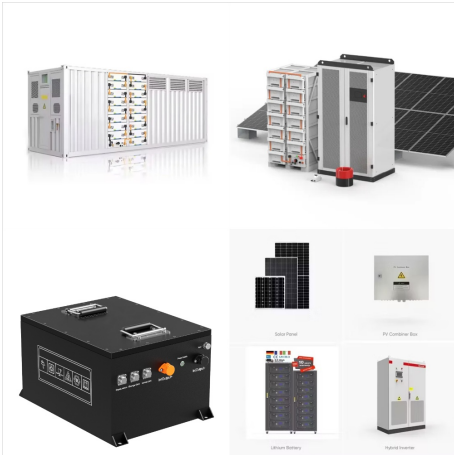


The Jinko Solar 425 watt monocrystalline all black module is the best in terms of power output and long-term reliability. The JKM425N-54HL4-B solar panel features 108 half-cell monocrystalline solar cells on a black backsheet with a robust black anodized aluminum alloy frame.



A typical 4kW solar panel system, including installation, costs £5,000 - £6,000. Added together, the total cost of solar panels and a battery in the UK is £13,000 - £15,500.; You can save between £440 - £1,005 per year on electricity costs, breaking even in 7 - 9 years.; Adding a solar battery could help reduce the average homeowner's electricity bill by ???

SIMPLE MAINTENANCE MONO PHOTOVOLTAIC MODULE 400



FU 410 M Silk (R) Plus. Silk (R) Plus is a series of monocrystalline black frame solar panels with high efficiency 182 mm PERC cells. The module configuration with 108 cells and a power of 410 Wp is perfect for residential and commercial installations. The FU410M Silk (R) Plus photovoltaic panel stands out for the high efficiency of the module up to 21%, its reduced dimensions of ???