



Are SMA Sunny Boy inverters arc fault?

SMA Sunny Boy US inverters are now available with integrated Arc Fault Circuit Interrupter (AFCI) functionality. Integrating AFCI functionality within the PV system inverter eliminates the cost and effort of installing additional arc-fault circuit protection components to meet 2011 NEC section 690.11 requirements. What are PV Arc-Faults?

How does an inverter detect an arc fault?

The inverter displays an error message indicating that an arc-fault has been detected, and also transmits an error message through its remote monitoring communications interfaces. A manual restart process is required to resume system operations.

Are SMA Sunny Boy inverters UL compliant?

SMA Sunny Boy US inverters available with integrated Arc Fault Circuit Interrupter (AFCI) functionality are fully compliant with 2011 NEC Section 690.11 and have been tested and certified to the requirements of UL Subject 1699B. SMA's AFCI solution fully integrates the arc-fault detection and interruption functionality within the inverter.

How does SMA AFCI work?

SMA's AFCI solution fully integrates the arc-fault detection and interruption functionality within the inverter. When an arc-fault is detected the inverter immediately stops operation, interrupting the flow of current across the arc.

Is SMA Solar Technology AG liable for information provided in the OSC?

SMA Solar Technology AG accepts no liability for the content or accuracy of the information provided in the OSC. SMA Online Service Center Terms and Conditions apply accordingly. All work on the inverter and the cabling of the photovoltaic array must be carried out by electrically qualified persons.

What causes arc faults in PV systems?

Arc-faults in PV systems may be the result of faulty components, installation errors, or mechanical damage and aging occurring after installation. Some common examples for arc-fault causes include:

SMA SOLAR INVERTER HAS ARC FAULT



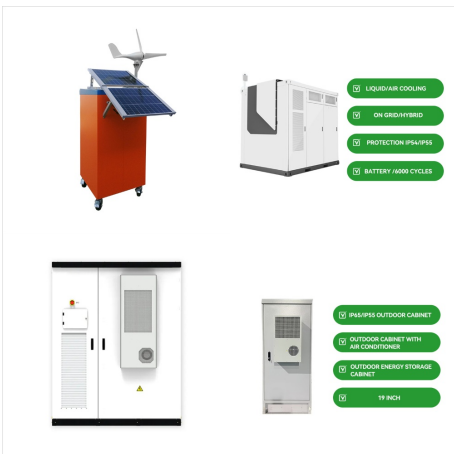
Damaged, pinched or abraded conductors. Loose or separated connections or terminations.



Ensure that the inverter has sufficient ventilation. Ensure that the ambient temperature $+45^{\circ}\text{C}$ (113°F) has not been exceeded. Ensure that the inverter is not exposed to direct solar irradiation. 8206. Electr. arc detected > Please confirm by tapping. The inverter has detected an electric arc and was recommissioned after a disconnection.



Solar Inverters. Back Solar Inverters; Sunny Boy Smart Energy; Sunny Tripower X Advanced AFCI compliant to new Standard UL 1699B Ed.1 for arc fault protection ??? delivering improved safety and reliability while allowing for automatic resetting After a fault has been diagnosed and analyzed, SMA informs the installer and PV system

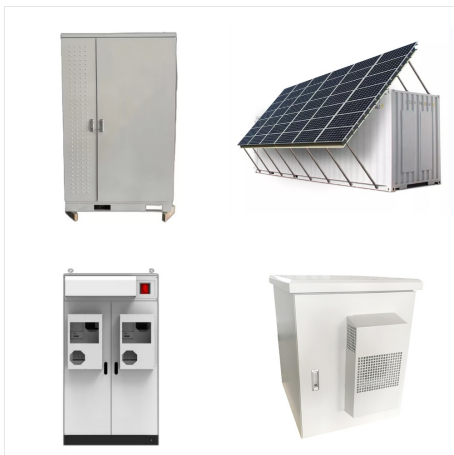


There are two options for resetting the operation inhibition: Reset the operation inhibition by tapping twice on the enclosure lid of the Connection Unit. Reset the operation inhibition by ???

SMA SOLAR INVERTER HAS ARC FAULT



In the parameter group Device > Inverter, select the parameter AFCI switched on or AfcilsOn and set to No. Activating the Arc-Fault Circuit Interrupter (AFCI) with Operation Inhibition. When the arc-fault circuit interrupter is active and an electric arc is detected, the inverter interrupts the feed-in operation and an operation inhibition occurs.



```
%PDF-1.3 %???? 25 0 obj > endobj xref 25 44
0000000016 00000 n 0000001463 00000 n
0000001574 00000 n 0000002722 00000 n
0000003189 00000 n 0000003244 00000 n
0000003279 00000 n 0000003392 00000 n
0000003669 00000 n 0000004200 00000 n
0000005984 00000 n 0000007641 00000 n
0000009141 00000 n 0000010612 00000 n ???
```



SMA's integrated Arc Fault Circuit Interrupter (AFCI) code compliant solution for Sunny Boy Inverters. are intended for photovoltaic professionals, electrical installers and system operators. SMA Solar Technology AG accepts no liability for the content or accuracy of the information provided in the OSC. All work on the inverter and the

SMA SOLAR INVERTER HAS ARC FAULT



In the event of a ground fault, high voltages can be present. Do not touch the cables, the substructure, the frame or the modules of the PV array.

Transformerless inverters can be damaged by sporadic ground faults in the module array if they occur during operation.



Electr. arc detected > Please confirm by tapping
The inverter has detected an electric arc and was recommissioned after a disconnection. By tapping, you are confirming that you have repaired any possible damage to PV modules, DC conductors or plugs in the PV system. Corrective measures:



In the manual, it says that the controller gives 10 seconds to allow the person to "tap" the inverter panel to cancel an Arc Fault detection, otherwise the inverter shuts down "permanently" until a service person comes out to reset the inverter with an installer's too/password. That sound like a pain for the installer.

SMA SOLAR INVERTER HAS ARC FAULT



SMA Sunny Boy US inverters available with integrated Arc Fault Circuit Interrupter (AFCI) functionality are fully compliant with 2011 NEC Section 690.11 and have been tested and certified to the requirements of UL Subject 1699B. SMA's AFCI solution fully integrates the arc-fault detection and interruption functionality within the inverter



with direct current (DC) arc-fault circuit protection. DC arc-fault circuit protection provides supplementary protection against fires that may arise as a result of arcing faults in PV system components or wiring. SMA Sunny Boy US inverters are now available with integrated Arc Fault Circuit Interrupter (AFCI) functionality.



An arc fault in a solar system occurs when an electrical current jumps across a gap between two conductive surfaces, creating a brief but intense burst of heat and light. This can happen when there is damage or wear to electrical wiring, connectors, or other components in a solar PV system, creating a pathway for the current to arc. Arc faults can be dangerous ???

SMA SOLAR INVERTER HAS ARC FAULT



SMA is one of the leading solar inverter manufacturers in the world, top of page. 08182818001 | sales@solarkobo . 08062520417 | 08052025022. Chat now. Home. Shop. Batteries; Notable among these innovations is the inclusion of three MPPTs with high input current up to 35A and an in-built arc-fault circuit interrupter, enabling more



If the inverter displays the event numbers 3501, 3601 or 3701, there could be a ground fault. The electrical insulation from the PV system to ground is defective or insufficient. (Riso) of Non-Galvanically Isolated PV Systems" at). Deactivating the Arc-Fault Circuit Interrupter (AFCI) Saving the Configuration in a File



SMA ArcFix. SMA has taken Arc Fault Circuit Interrupter (AFCI) technology to a new level with SMA ArcFix. The arc fault protection feature effectively detects electric arcs and interrupts the electric circuit. The system automatically restarts if a false alarm occurs. The future integration of SMA ArcFix into PV inverters will offer several

SMA SOLAR INVERTER HAS ARC FAULT



If the red LED is glowing and the event number 3501, 3601 or 3701 is being displayed in the Results menu on the inverter user interface, there may be a ground fault present. The electrical insulation from the PV system to ground is defective or insufficient.



SMA ArcFix is an Arc Fault Circuit Interrupter (AFCI). With this function, the inverter effectively detects arcs on the DC side and interrupts them. A detected electric arc causes the inverter to interrupt feed-in operation. To restart feed-in operation, the operational disruption which has occurred, must be reset through a manual restart.



SMA has maintained an ongoing, collaborative relationship with UL over the past few years with the ultimate goal of making the design and testing of inverters more effective. About SMA The SMA Group generated sales of ???1.7 billion in 2011 and is the global market leader for solar inverters, a key component of all PV plants.

SMA SOLAR INVERTER HAS ARC FAULT



Grid fault. The inverter has disconnected from the utility grid. A stand-alone grid or a very large change in the power frequency was detected. Fallon Solutions team can take care of all your SMA solar Inverter installation and repairs and can also offer you a 26 point safety check of your existing system. Simply call us on 1300 054 488



Installed pv system last year this is the first arc fault warning. Inverter did not stop working, no reset required. For SMA US-41 inverters, If arc fault detected the inverter stops for 10 mins, restarts, and checks if the fault is still present. If ???



Do solar inverters need maintenance? Solar inverters are designed so that they require little to no maintenance. However, like every other home appliance, using your solar inverters with care will make them function optimally and last longer. Here are a few maintenance tips for solar inverters.

SMA SOLAR INVERTER HAS ARC FAULT



Inverters can be sensitive to electrical activity. Sometimes the sensors get disturbed, and a fault may occur. The fault may last until cleared. To clear the fault code, follow these steps below. Start by restarting and power cycling your ???



If the red LED is glowing and the event number 4301 or 4302 is shown in the event list on the user interface of the inverter, the inverter has detected an electric arc and interrupts feed-in operation. Procedure: DANGER



The inverters' arc-fault circuit interrupter (AFCI) functionality is certified to Standard UL 1699B Edition 1 (August 2018), Photovoltaic (PV) DC Arc-Fault Circuit Protection, which defines requirements for PV arc-fault protection devices intended for use in solar photovoltaic electrical energy systems as described in NEC 690.11.

SMA SOLAR INVERTER HAS ARC FAULT



To give customers the highest level of safety, we have developed SMA ArcFix AFCI solution. The new technology fully integrates the arc-fault detection and interruption functionality within the inverter. When an arc-fault is detected, the inverter immediately stops operation, interrupting the flow of current across the arc.



After you have successfully resolved the Arc Fault conditions in your Photovoltaic (PV) system, the inverter must be manually reset if Event 4301 or 8206 was previously reported on the display, in the inverter User Interface (UI) or in the plant logbook at Sunny Portal.



The new Sunny Boy 3000-US, 3800-US, 4000-US and Sunny Boy 5000-US, 6000-US, 7000-US, 8000-US with AFCI detect and extinguish arc faults, have been tested to UL 1699B and comply with the PV

SMA SOLAR INVERTER HAS ARC FAULT



Watch the bottom of the inverter screen in the location where it previously said Arc fault detected, and after approximately 45 seconds this area of the screen will say: "Arc fault detected, confirm by tapping". At this point knock on the screen like you are knocking on a door.