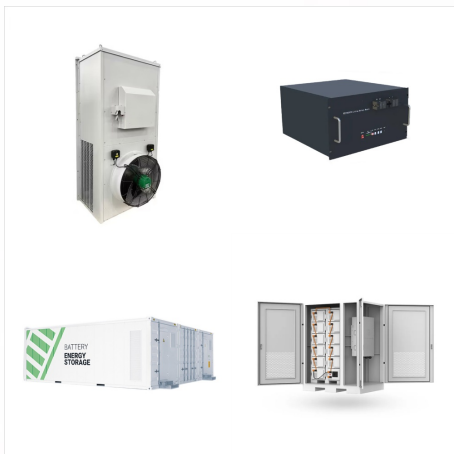


Sunny Central UP; Hybrid Inverters. Back Hybrid Inverters; Sunny Boy Smart Energy; Battery Inverters. Back Battery Inverters; Sunny Boy Smart Energy; Sunny Island 4548-US / 6048-US; Multiclustor Box for Sunny Island 4548-US and 6048-US; Sunny Central Storage 3450 UP-XT-US / 3600 UP-XT-US / 3800 UP-XT-US / 3950 UP-XT-US



iv SMA America SB3300U-11:SE3006 PV arrays produce electrical energy when exposed to light and thus can create an electrical shock hazard. Wiring of All Sunny Boy inverters sold in the USA have a five-year warranty, as indicated on the warranty card included in the Sunny Boy shipping container. For warranty coverage, or



Sunny Boy 3300 Sunny Boy 3800 Sunny Boy 3800/V Input (DC) Max. DC power (@ cos ?? =1) 3820 W 4040 W 3900 W Max. DC voltage 500 V 500 V 500 V MPP voltage range 200 V ??? 400 V 200 V ??? 400 V 200 V ??? 400 V DC nominal voltage 200 V 200 V 200 V Min. DC voltage / start voltage 200 V / 250 V 200 V / 250 V 200 V / 250 V

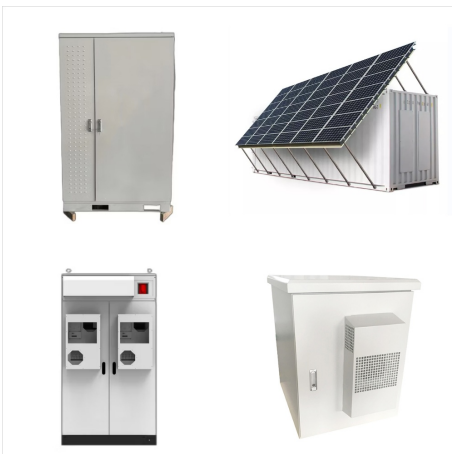
# SMA SUNNY BOY SB 3300 PHOTOVOLTAIC STRING INVERTER



You can offer the new Sunny Boy HF in a spectrum of 2000 to 3300 kilowatts of nominal power: as the Sunny Boy 2000HF, Sunny Boy 2500HF, and Sunny Boy 3000HF. It ensures that your customers will always get the perfect device for their residential system. Down to earth Grounding is fast and easy using the plug-in grounding module - all without



The inverters can be located as close to the PV string as desired (even on the roof, IP65 protection), eliminating long DC wire runs and allowing low DC currents. Connection to the mains is to the house consumer unit. Sunny Boy Inverters include a DC isolator, giving savings in both installation time and cost compared to other brand inverters.

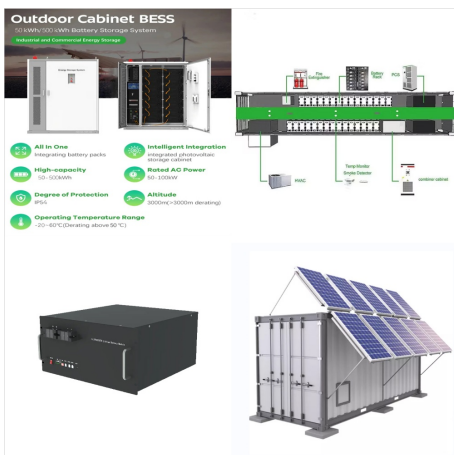


The new Sunny Boy-US also offers simple, selectable country codes for region-specific smart inverter functionality in areas such as Hawaii, California and the Northeast. SMA will continue to offer an optional cellular modem and revenue grade meter. SMA's proprietary Secure Power Supply function also returns with the new Sunny Boy models.

# SMA SUNNY BOY SB 3300 PHOTOVOLTAIC STRING INVERTER



SMA ArcFix, the integrated arc-fault circuit interrupter (AFCI) in our inverters, is a highly effective tool for detecting possible electric arcs in the PV system. The inverter stops feed-in operation whenever an electric arc is detected.



Sunny Boy SB 2500 and SB 3000 String Inverter for Photovoltaic Plants Installation Guide Version 1.0 SB25\_30-11:SE0307 IMEN-SB25\_30. to assist with the speedy and correct installation and commissioning of the SMA Sunny Boy SB 2500 and Sunny Boy SB 3000 inverters. The Sunny Boy is equipped with the SMA grid guard. This is a type of automatic

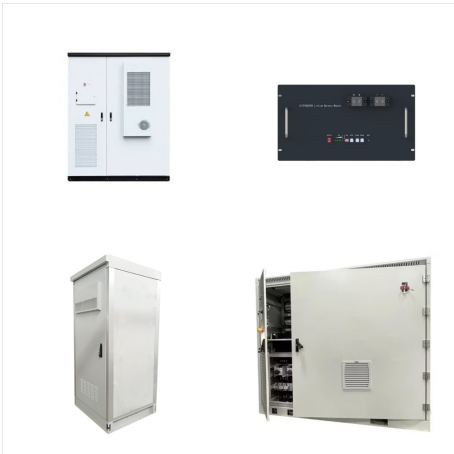


Fig. 3.1: Basic Principle of an Utility Interactive PV Plant with a Sunny Boy 4200TL Multi-String Usage of the Sunny Boy 4200TL Multi-String in any applications different from this will void the warranty.  
3.1 Device Design We have focused on a simple functional design when we developed the Sunny Boy string inverters.

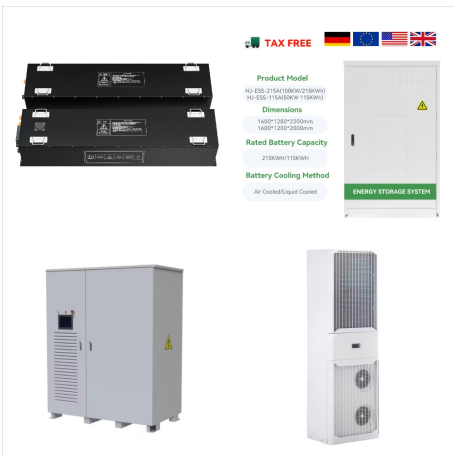
# SMA SUNNY BOY SB 3300 PHOTOVOLTAIC STRING INVERTER



SMA Sunny Boy SB 8000US inverter for residential or light commercial grid-tie solar systems. Sunny Tower compatible. Integrated fused series string combiner; Sealed electronics enclosure & Opticool; The Sunny Boy 8000US is designed to support PV modules in series, increasing efficiency and eliminating the need for expensive DC



The Sunny Boy SB 1100 weighs 22 kg, the Sunny Boy SB 1700 weighs 25 kg. Take this weight into account when choosing the installation location and method of installation. The Sunny Boy should be installed in a place where it is not exposed to direct sunlight. An increased ambient temperature can reduce the yield of the PV system.



The SMA Sunny Boy SB6.0 is a 6,000 watt AC grid-tied PV solar inverter that features 3 independent MPPT channels, a 2,000 watt off-grid secure power supply, lifetime monitoring, and an integrated DC disconnect safety switch. Shop and compare solar inverters at SunWatts.

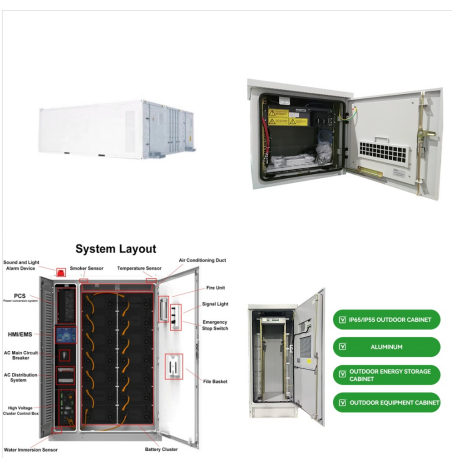
# SMA SUNNY BOY SB 3300 PHOTOVOLTAIC STRING INVERTER



Notes on this Manual 1 Notes on this Manual 1.1  
Validity The manual describes how to install and  
commission SMA inverters of the types Sunny Boy  
3300 and Sunny Boy 3800. This manual applies for  
the Sunny Boy 3300 firmware versions  
GRX33\_2.85/2.79 and above and for the Sunny Boy  
3800 firmware version GRX38\_2.85/2.79 and  
above. Page 6: Symbols Used



SMA Sunny Boy SB5000US inverter for residential  
or light commercial grid-tie solar systems. Sunny  
Tower compatible. SMA Sunny Boy SB 5000US  
Inverter Features Review: Provides 5000W AC  
Maximum Output Power; The Sunny Boy is  
designed to support PV modules in series,  
increasing efficiency and eliminating the need for  
expensive DC



operating the Sunny Boy SB 3300TL HC. "Sunny  
Design" will assist you in the system design and  
checking the string size for a given type of inverter.  
Further information on Sunny Design is available at  
If you require further information, please call the  
Sunny Boy hotline on the following number: (0561)  
95 22 - 499 2.1 Target Group

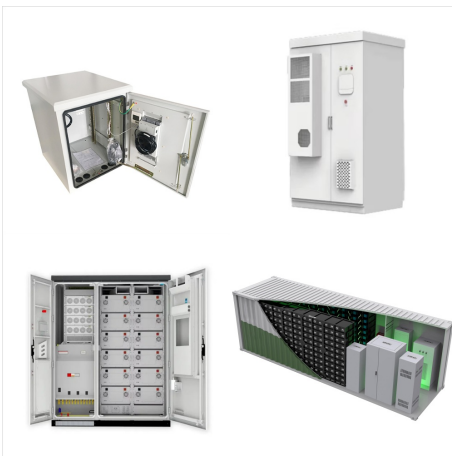
# SMA SUNNY BOY SB 3300 PHOTOVOLTAIC STRING INVERTER



SMA Sunny Boy 3300 Grid tied ROW Inverter. SMA, Sunny Boy 3300 Grid tied ROW Inverter, Includes Low Frequency Transformer, 3.3kW, 230VAC, 50Hz, 5 Yr Warr, SB3300-11. It is robust, easy-to-handle, and, thanks to its galvanic isolation, can be used in all kinds of AC grids: the Sunny Boy 3300 / 3800. Due to its suitability for PV array grounding



SB 5000US / SB 6000US / SB 7000US / SB 8000US Sunny Boy 5000-uS / 6000-uS / 7000-uS / 8000-uS The Sunny Boy 5000-US, 6000-US, 7000-US and 8000-US inverters are UL Certified and feature excellent efficiency. Max. input current / per string (at DC disconnect) 21 A / 20 A 36 A @ combined terminal Type designation SB 5000US SB 6000US SB



PV Inverter. SUNNY BOY 3300 inverter pdf manual download. Also for: Sunny boy 3800. Sign In Upload. Download Table of Contents Contents. Add to my manuals. Delete from my manuals. Summary of Contents for SMA SUNNY BOY 3300. Page 1 PV Inverter SUNNY BOY 3300/3800 User Manual SB33\_38-BA-BEN114230 | TBEN-SB33-38-11

# SMA SUNNY BOY SB 3300 PHOTOVOLTAIC STRING INVERTER



100% Ease and Comfort With SUNNY BOY 3.0???6.0. The new Sunny Boy 3.0???6.0 ensures maximum energy yields for private homes. Thanks to its integrated web interface for easy commissioning via a smartphone or tablet and SMA Smart ???



SMA Solar Technology AG 1 Notes on this Guide 1.1 Validity This guide describes the assembly, installation, commissioning and maintenance of the following SMA inverters: ??? Sunny Boy 3300 (SB 3300) from firmware version GRX33\_3.02/3.02, ??? Sunny Boy 3800 (SB 3800) from firmware version GRX38\_3.05/3.05. Page 7: Symbols Used



Sunny Boy 3300 / 3800 The All-rounder with Integrated Grid Management Functions It is robust, easy-to-handle, and, thanks to its galvanic isolation, it can be used in all kinds of AC grids: the Sunny Boy 3300/3800. Due to its suitability for PV array grounding, it can be combined with all module types. The

# SMA SUNNY BOY SB 3300 PHOTOVOLTAIC STRING INVERTER



SMA Solar is a solar energy equipment supplier and produces and manufactures solar inverters for PV systems. It was founded in Germany in 1981, so it has a very long past which translates to decades of innovation and market-leading. and commercial ones in the Megawatt range. There are truly many options, in particular, twelve-string SMA



SMA Sunny Boy SB 3.6 1AV-41 Inverter - with WiFi. The Sunny Boy 3.0???6.0 ensures maximum energy yields for private homes. Thanks to its integrated web interface for easy commissioning via a smartphone or tablet and SMA Smart Connected service, this inverter offers true ease and comfort for PV system operators and installers.



SMA Sunny Boy 7.7-US - SB-7.7-1SP-US-41 > 7700 Watt 208 / 240 Volt Single Phase Grid-Tie Inverter : in order to build cost effective NEC 2017 PV RSS compliant string systems. Or leave all the rooftop electronics behind and design the system to take full advantage of the Secure Power Supply (SPS feature not Compatible with Sunspec based PV

# SMA SUNNY BOY SB 3300 PHOTOVOLTAIC STRING INVERTER



??? Sunny Boy 700: The small inverter for little PV-plants and simple extension possibilities (3 input voltage and power ranges) ??? Sunny Boy 850: The output optimized inverter for PV-plants with at least 1 kWp ??? Sunny Boy 1100E: For PV-plants with up to 1.5 kWp and equipped with a wider input voltage range ??? Sunny Boy 1700E:



Current communication standards make the inverter future-proof, meaning SMA storage solutions and SMA Smart Home can be added at any time. The world-leading Sunny Boy 3.0???6.0 provides PV system owners and installers with 100% ease and comfort. The SMA Sunny Boy 5.0 AV-41 is the next generation of residential single phase inverters.



Sunny Boy SB3.8 is a DC-AC power inverter for high-voltage, Tesla Powerwall or LG Chem batteries. Designed for self-consumption, zero export, or peak shaving. 3.8kW SMA Sunny Boy Inverter SB 3.8-US. SMA The SMA Sunny Boy SB3.0 is a 3,000 watt AC output grid-tied PV solar inverter that features 2 independent MPPT channels, a 2,000 watt

# SMA SUNNY BOY SB 3300 PHOTOVOLTAIC STRING INVERTER

---



Solar Inverters. We offer you the right device for each application: for all module types, for grid-connection and feeding into stand-alone grids, for small house systems and commercial systems in the Megawatt range. String Inverters. ???



SMA Sunny Boy 6.0-US - SB-6.0-1SP-US-41 > 6000 Watt 208 / 240 Volt Single Phase Grid-Tie Inverter : in order to build cost effective NEC 2017 PV RSS compliant string systems. Or leave all the rooftop electronics behind and design the system to take full advantage of the Secure Power Supply (SPS feature not Compatible with Sunspec based PV