

What is a Sol partner?

Sol Partners are consultants offering comprehensive business support solutions and helping companies to develop their human capital. Sol Partners' primary areas of expertise lie in developing HR strategies, recruiting senior managers, putting together management teams, and developing human resources at the various stages of a company's development.

What is Sol LLC?

SOL LLC is one of the best fire and safety companies in Jordan, acknowledged and accredited by customers. Our fire protection services meet the legal and regulatory compliances and specifications of the Civil Defense authorities.

Who is the Sol group?

The Sol Group is a leading petroleum company. Sol is the premier supplier of petroleum products to the Caribbean basin, providing customised energy solutions to customers every day and for generations to come.

Who is Sol investments?

S.O.L. Investments is a private international business development and investment consortium with interests in Power, Oil & Gas and Minerals, Infrastructure & Transport Solutions, Airport & Port Management, Telecommunications, and Venture Capital; with offices in the United States, Belize, Panama, Peru and China.

Who is Sol Capital Management Company?

Commitment. Expertise. Independence. These are just a few words to describe SOL Capital Management Company, an investment advisory firm with offices located in metropolitan Washington DC, New York, Virginia and Israel.

Who is Sol Consulting Group?

Established in 2013, Sol Consulting Group, LLC is a Business Consulting and Accounting company. The team focuses on Business Consulting and Accounting and is in Rockville, Maryland. Read more Launched in 2003, Valforce, Inc.



Consulting and strategy with Sol Partners can make a tremendous difference in the market success. Business Insights. The retail industry has a unique set of metrics and terminology that isn't frequently used in other industries. We have the valuable ability to assess data and extract pertinent information. Whether you are analyzing in-season



Sol Partners | 504 followers on LinkedIn. Sol Partners are consultants offering comprehensive business support solutions and helping companies to develop their human capital. Sol Partners' primary areas of expertise lie in developing HR strategies, recruiting senior managers, putting together management teams, and developing human resources at the various stages of a ???



VONSOL Construction is a full-service design-build construction management firm located in Southern New England. We are primarily focused on the commercial construction in the office, industrial, medical office and retail sectors in the greater Providence and Boston markets.



Free and open company data on Puerto Rico company SOL PARTNERS, LLC (company number 320034-1511), El Caribe Office Building, 53 Palmeras Street, Floor 14, SAN JUAN, PR, 00901. The Open Database Of The Corporate World. Search. Companies Officers Log in/Sign up; SOL PARTNERS, LLC Company Number 320034-1511 Native Company Number



Mark E. Curry is the founder and CEO of Grupo SOL. He is also the president and CEO of SOL Partners, a fintech consulting company located in San Juan, Puerto Rico. Mark has over 20 years in the fintech space and has founded and exited businesses in sectors ranging from litigation support, software development, and consumer finance.



Also as part of Sol's Crop Over promotions, the company launched "Sol Soca Summer" where drivers who fuel up with \$50 or more at any Sol service station across the island will get a chance to enter to win tickets to the hottest events this Crop Over season, including Topsy, Island Mas Breakfast Party, The Reunion, Soca on De Hill, Soca 5.



Find company research, competitor information, contact details & financial data for SOL PARTNERS SOLUTION AND CONSULTANCY CORP. of Angono, Rizal. Get the latest business insights from Dun & Bradstreet.



Sol Partners are consultants offering comprehensive business support solutions and helping companies to develop their human capital. Sol Partners' primary areas of expertise lie in developing HR strategies, recruiting senior managers, putting together management teams, and developing human resources at the various stages of a company's development.



SOL PARTNERS PTE. LTD.. is ACRA -registered entity that has been operating for 6 years 4 months in Singapore since its incorporation in 2018. Officially, . SOL PARTNERS PTE. LTD. is registered as Exempt Private Limited Company with its address 625 ALJUNIED ROAD, #05-06, ALJUNIED INDUSTRIAL COMPLEX, Singapore 389836.



Terms and Conditions Last updated: June 17, 2022
Please read these terms and conditions carefully before using Our Service. Interpretation and Definitions Interpretation The words of which the initial letter is capitalized have meanings defined under the following conditions. The following



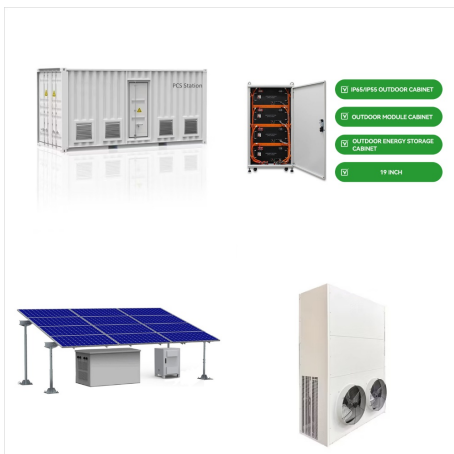
SOL PARTNERS PTE. LTD. (the "Company") The Company is a Local Company and it's current status is Live Company. The company was registered / incorporated on 30 April 2018 (Monday), 6 years ago with a paid up capital of \$1,000



Find out what works well at SOL PARTNERS from the people who know best. Get the inside scoop on jobs, salaries, top office locations, and CEO insights. Compare pay for popular roles and read about the team's work-life balance. Uncover why SOL PARTNERS is the best company for you.



Sol Partners | 455 followers on LinkedIn. Sol Partners are consultants offering comprehensive business support solutions and helping companies to develop their human capital. Sol Partners' primary areas of expertise lie in developing HR strategies, recruiting senior managers, putting together management teams, and developing human resources at the various stages of a ???



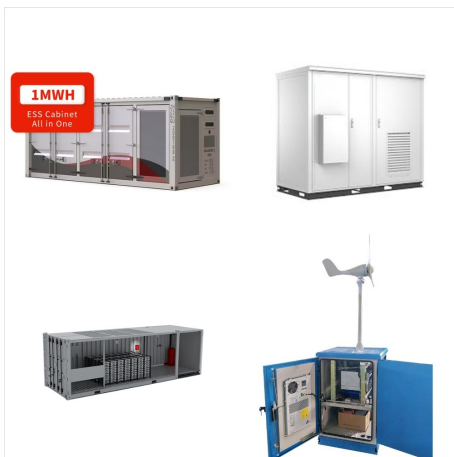
Sol Partners is a staffing and recruiting firm that provides human resources management services. Moscow, Moscow City, Russian Federation; 11-50; Private; solpartners ; Edit Lists Featuring This Company Section. Russian Federation Companies (Top 10K) 9,982 Number of Organizations ??? \$52.7B Total Funding Amount ??? 2,016 Number of



SOL PARTNERS PTE. LTD. is a Singapore EXEMPT PRIVATE COMPANY LIMITED BY SHARES. The company was incorporated on 30 Apr 2018, which is 6.3 years ago. The address of the Business's registered office is 625 ALJUNIED ROAD, #05-06, ALJUNIED INDUSTRIAL COMPLEX, Singapore 389836. The Business current operating status is Live ???



SOL Y LUNA LANGUAGE PARTNERS LLC is a Colorado Limited-Liability Company filed on March 1, 2022. The company's filing status is listed as Good Standing and its File Number is 20221231787. The Registered Agent on file for this company is Sol Y Luna Language Partners LLC and is located at 2855 W Park Pl, Denver, CO 80219.



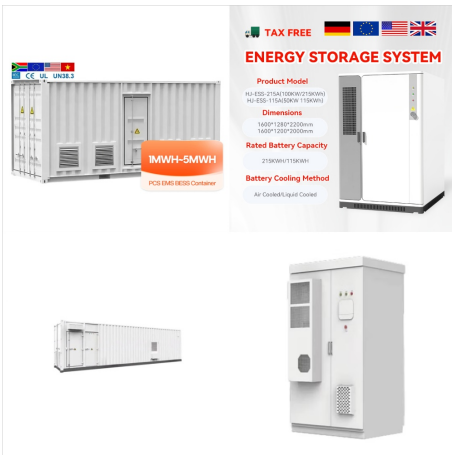
AL SOL PARTNERS LLC is a Florida Domestic Limited-Liability Company filed on July 14, 2021. The company's filing status is listed as Active and its File Number is L21000321882. The Registered Agent on file for this company is Butler Asya and is located at 100 N Federal Hwy, Hallandale, FL 33009.



PUEBLO DEL SOL I HOUSING PARTNERS, L.P. is a California Limited Partnership - Ca filed on November 4, 2019. The company's filing status is listed as Active and its File Number is 201931000008. The Registered Agent on file for this company is Csc - Lawyers Incorporating Service and is located at 251 Little Falls Drive, Wilmington, DE 19808.



Nelson Partners Student Housing: We solely focus on developing, acquiring, providing 1031 exchange investments and managing student housing properties across the United States. Sol y Luna offers an impressive variety of off-campus University of Arizona apartments, in addition to one-, two-, three-, four-, and five-bedroom options



Sol-Ark(R) residential energy storage solutions are the most powerful hybrid inverters that are NEM 3.0 ready, battery agnostic, and scalable. Sol-Ark's platform includes your pick of UL9540 battery partners, enabling modern battery features today with easy 48V replacement down the road. A Selection of Our Industry Leading Battery Partners



Over ten years ago, our CEO and CTO, Tom Brennan, founded Sol-Ark(R) with a mission to make the most reliable, innovative, and affordable solar storage solutions to power families and businesses. After traveling the world and doing extensive product research, the conclusion was the current energy storage solutions were cumbersome, expensive, overly complex, and ???



Because Sol-Ark(R) hybrid inverters have a 48V battery agnostic architecture, they work with over 25 different battery suppliers and partners to achieve optimal energy production and efficiency. Low voltage solar batteries are an increasingly popular way to store, use, and potentially sell the energy generated by solar panels, as well as help



What SOL PARTNERS's spending power? Does SOL PARTNERS have a presence in the domain it operates in? * This profile contains information from ACRA Information on Corporate Entities from Accounting and Corporate Regulatory Authority which is made available under the terms of the Singapore Open Data Licence version 1.0.



In 1991 and 1993, SOL received the Excellence Finland Award and was awarded the Nestor Partners Oy Trailblazers" lantern. In 1992, SOL also received the Achiever of the Year award. The owners expect from the employees responsible operations in accordance with the company values. SOL is an active member of the Finnish Family Firms



Who is SOL Partners. Sol Partners was founded by seasoned fintech disruptor and entrepreneur, Mark Curry. Mark was instrumental in the success of a number of mainland businesses prior to establishing Sol Partners. His experience in a range of industries including litigation support, food and beverage, software development, risk management and call center outsourcing - honed ???



PUEBLO DEL SOL II HOUSING PARTNERS, L.P. is a California Limited Partnership - Ca filed on November 4, 2019. The company's filing status is listed as Active and its File Number is 201931000009. The Registered Agent on file for this company is Csc - Lawyers Incorporating Service and is located at 251 Little Falls Drive, Wilmington, DE 19808.