



SDN-C DIN Rail Series power supplies combine high efficiency and compact size with visual diagnostic LEDs. Close Explore Emerson 12 V (12-15 Vdc Adj.) or 24 V (23.5-28.5 Vdc Adj.) Overload Capability > 30.5 but < 33 Vdc, auto recovery Status Indicator 3 status LEDs (Input, Output, Alarm)



Nominal Voltage 24 V (24-28 V dc Adj.) Current 20 A Power 480 W Power Boost 1.5 x nominal current for 4 s Hold-up Time >20 ms at full load (25°C) Tolerance < 2% overall Line Regulation <0.5% Load Regulation <0.5% Time and Temperature Drift <1% Initial Voltage Setting 24.5 V ? 1% Ripple <100 mVpp Power Back Immunity 35 V dc



Order SolaHD SDN 20-24-480CD (2106-SDN20-24-480CD-ND) at DigiKey. Check stock and pricing, view product specifications, and order online. Power Supplies - External/Internal (Off-Board) Industrial, DIN Rail Power Supplies. Manufacturer. SolaHD. Series. SDN-C. Packaging. Bulk. Part Status. Active. Input Type. AC or DC. Number of Outputs. 1



(using two similar SDN-D power supplies) Yes, with SDN Redundancy modules. Turn On Time, after AC is applied to input, 25 °C Resistive load: < 1.0 sec  
SDN 10-24-100D SDN 20-24-100D Reliability  
MTBF: Telcordia SR-332 Issue 2 Method 1 Case 3  
>773,575 hours @ 115 Vac, 25 °C >869,055 hours @ 230 Vac, 25 °C



The SDN-D high performance DIN rail power supply boasts one of the highest efficiencies available in the market today. Extensive diagnostic monitoring capabilities are possible with the optional SCM network communication module. 67 HzSDN  
SDN 10-24-100D: 100-300 Vdc (90-375 Vdc)SDN  
SDN 20-24-100D: 100-250 Vdc (90-275 Vdc) Operating Temperature 40



Our next-generation SDN-C power supplies offer high efficiency in a compact size, providing up to 960 Watts of output power in both single- and three-phase models. Featuring diagnostic LEDs, sag immunity, power factor correction and odels  
SDN 20-24-480CC, SDN 40-24-480C: ??? UL  
60950 E137632 No. 234-M90 UL Recognized Component, Haz. Loc



SDP??? Low Power DIN Rail Series The compact, lightweight DIN Rail power supplies come in output voltages from 5 to 48 Vdc and power ratings of up to 100 Watts. These extra small, efficient units are designed specifically for the industrial environment. Each unit is rated from -10°C to 70°C, with no derating necessary until above 60°C.



-480 SolAHD DIN Rail Power Supplies RO 663-SDN20-24-480C datasheet, inventory, & pricing. Skip to Main Content (800) 346-6873. Contact Mouser (USA) (800) 346-6873 | Feedback. Change Location. SDN-C DIN Rail Power Supplies Combines high efficiency, compact size, visual diagnostic LED, wide operating temps.



-480C SDN 10-24-480C SDN 20-24-480CC SDN 40-24-480C SDN 2.5-20RED Power Rating Yes Yes Yes No Input / Output Signals Yes Yes Yes N/A SDN 30/40RED The switch on front of the SDN power supply should be placed in parallel mode (not single mode) when power supplies are used with redundant module. Electrical Characteristics



-200 SolaHD DIN Rail Power Supplies 480W 24-28VDC 20A datasheet, inventory, & pricing. Skip to Main Content (800) 346-6873. Contact Mouser (USA) (800) 346-6873 | Feedback. Change Location. English. Español \$ USD United States. Please confirm your currency selection:



Sola SDN20-24-100C 480W 24V DIN P/S 115/230V IN, SDN2024100C. FREE SHIPPING ON ORDERS OVER \$3,000 SEARCH-SEARCH. Control Power Solutions. Power Quality and Distribution Solutions. Home > Control Power Solutions > Power Supplies > SDN-C Performance DIN Rail Series Power Supplies. Sola SDN20-24-100C 480W 24V DIN P/S 115/230V IN. Sola ???



The SDN DIN Rail power supplies provide industry leading performance. Sag Immunity, transient suppression and noise Models SDN 2.5-24-100P, SDN 4-24-100LP ??? Class 2 per UL 1310, CSA C22.2 No. 223 Ripple/noise is stated as typical values when measured with a 20 MHz, 5. Full load, 100 Vac Input @ T amb = +25°C.

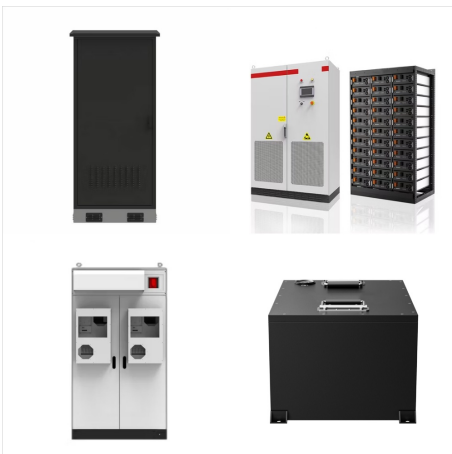




Buy SDN 20-24-480CD - SOLAHD - AC/DC DIN Rail Power Supply (PSU), ITE, 1 Output, 480 W, 24 V, 20 A. Newark Electronics offers fast quotes, same day dispatch, fast delivery, wide inventory, datasheets & technical support.



SOLA HD | SDN20-24-100P SDN SERIES POWER SUPPLY DIN RAIL LRG CAP SINGLE PHASE 24V @ 20A. MFR PART # SDN20-24-100P. PART # 245780. Email. Print. Minimum 1 Each. Call for Availability. Details; Shipping; Specifications: Type: POWER SUPPLY: UNSPSC Code: 32150000: Shipping and Fulfillment Policy.



Order SolaHD SDN20-24-100C (2106-SDN20-24-100C-ND) at DigiKey. Check stock and pricing, view product specifications, and order online. AC DC Configurable Power Supplies (Factory Assembled) AC DC Configurable Power Supply Chassis; SDN 20-24-480CD. AC/DC DIN RAIL SUPPLY 24V 480W. SolaHD. \$770.05000. Details. SDU2024B. 480VA 20A 24V DIN DC



Find the best pricing for Sola/Hevi-Duty SDN 20-24-480CD by comparing bulk discounts from 6 distributors. Octopart is the world's source for SDN 20-24-480CD availability, pricing, and technical specs and other electronic parts. DIN Rail Power Supply, 480W, 24V, DIN P/S, 380/480V IN, SDN-C Series | SolaHD SDN20-24-480CD. \$ 698.801. Add to BOM.



The SDN-C DIN rail power supplies are the next generation of the popular SDN series. These models combine high Models SDN 20-24-100C, SDN 20-24-480CC, SDN 40-24-480C ??? UL 60950 E137632 CUL/CSA-C22.2 No. 234-M90 UL Recognized Component, Haz. Loc., E234790



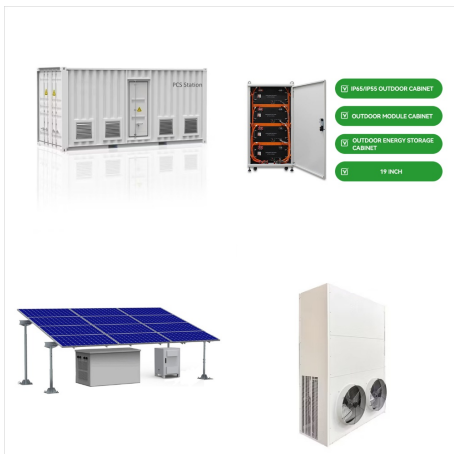
-100C Power Supplies from EMERSON In Stock, Order Now! Same Day Shipping, 2-Year Warranty, Radwell Repairs - POWER SUPPLY, SDN-C COMPACT SERIES, 480 WATT, SINGLE PHASE, 115-230 VAC INPUT, 24 VDC OUTPUT, 20 AMP, DIN RAIL MOUNT SOLA HD > SDN-20-24-100C. Product added to Cart. SDN-20-24-100C . Repairable ???



1. 24 Vdc Power Supply (Recommended Sola SDN Series) 2. 24 Vdc SDU DC UPS Power Module 3. 24 Vdc SDU DC UPS Battery Module; or 24 Vdc SDU DC UPS External Battery Module. There are two models of the SDU DC UPS Power Module: 1. SDU 10-24, 24 Vdc/10amp (battery modules are required) 2. SDU 20-24, 24 Vdc/20amp (battery modules are required)



Buy SDN20-24-100C - SOLAHD - AC/DC DIN Rail Power Supply (PSU), 1 Output, 480 W, 24 VDC, 20 A. Newark Electronics offers fast quotes, same day dispatch, fast delivery, wide inventory, datasheets & technical support.



For added reliability, the SDN-C power supplies can be used with the SolaHD??? Redundancy modules to provide redundant power supply operation. Also known as: 783472001965, SDN20-24-100C Specifications



The SDN-D high performance DIN rail power supply boasts one of the highest efficiencies available in the market today. Extensive diagnostic monitoring capabilities are possible with the optional SCM network communication module. 240 Vac (85-264 Vac), 43 - 67 HzSDN 10-24-100D: 100-300 Vdc (90-375 Vdc)SDN 20-24-100D: 100-250 Vdc (90-275 Vdc)



SolaHD SDN10-24-100P Power Supply, AC-DC, 24V, 10A, 85-132/176-264V, Enclosed, SDN Series Mfr. Part #: SDN10-24-100P / RS Stock #: 70211354. Swipe to spin. SolaHD The SDN-P Series DIN Rail power supply products provide industry leading performance. Sag immunity, transient suppression and noise tolerant, the SDN series ensures compatibility



? SDN20-24-100P SolaHD DIN Rail Power Supplies 480W 24-28VDC 20A CLASS1 DIV 2 ENVRMNT datasheet, inventory, & pricing. 20 A 20 A Output Power: 480 W SDN-D DIN Rail Power Supplies High-efficiency power supplies for harsh environments, extreme temperatures, & hazardous locations.





Home > Control Power Solutions > Power Supplies  
> SDN-C Performance DIN Rail Series Power  
Supplies. Sola SDN40-24-480C 960W 24V;480VAC  
3PH;PWRSPDYDIN. Sola SDN40-24-480C 960W  
24V;480VAC 3PH;PWRSPDYDIN SDN 20-24-100  
C,SDN40-24-100 C, SDN 5-24-480 C, SDN  
10-24-480C: