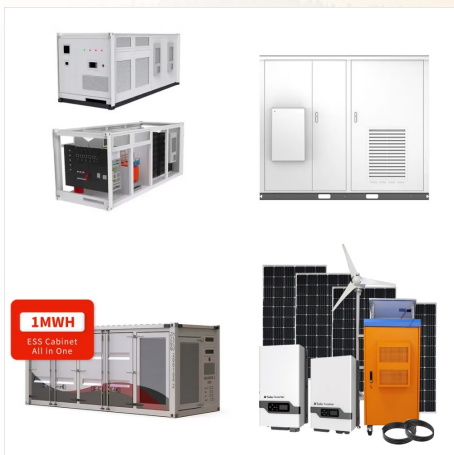


These external modules decouple the power supply outputs from each other so that, in case of failure, one power supply unit cannot overload the other units. With the addition of an SDN Series redundancy module, the SDN Series power supplies can also be used for true redundant operation including 2N and N+x configurations.



10 Amp, Power Supply. SDN Series. 1-Phase.  
Rated Input Voltage: 85 - 132 / 176 - 264V AC & 90 - 375V DC. Power Supply, 10A, 1P, 85-264VAC, 24VDC, DIN Rail Mount Item #: 71260 Cat #:  
SDN10-24-100P hazardous location approvals and optional redundant accessories allow the SDN series to be used in a wide variety of applications.  
Wide



The Sola SDN4-24-100LP has the highest output current possible while still meeting the requirements for NEC Class 2. SDN Redundant Options: SDP Low Power (DIN Rail) SCP 30 Watt; Single, Dual, Triple (DIN Rail) Sola's SDN DeviceNet™ models meet ODVA specifications for power supplies for either Thin or Thick cable applications.

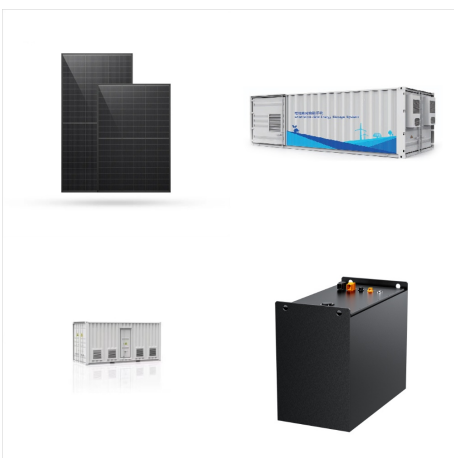
# SOLA REDUNDANT 24VDC POWER SUPPLY



The SFL series is a DIN Rail switching power supply series that complements the Sola SDN products with more input voltage, output voltage and power levels to give an even broader range of industrial DC power solutions. 24 VDC 48 VDC: 24 A 12 A: Redundant Models: SFL12-24-100RED SFL24-24-100RED: 115/230 VAC: 300 Watt 600 Watt: 24 VDC: 12 A



Solar Power Combiner. Transformers. UPS (Uninterruptible Power Supplies) Power Supply, AC-DC, 24V, 2.5A, 85-132/176-264V, Enclosed, SDN Series hazardous location approvals and optional redundant accessories allow the SDN-P series to be used in a wide variety of applications. Wide operation temperature range, high tolerance to shock and



The SDN DIN Rail power supplies provide industry leading performance. Sag Immunity, transient suppression and noise Power factor correction to meet European directives, hazardous location approvals and optional redundant accessories allow the SDN series to be used in a wide variety of applications. 24 Vdc (22.5 - 28.5 Vdc adj.) 24 Vdc

# SOLA REDUNDANT 24VDC POWER SUPPLY



??? Redundant power supply operation with true isolation ??? Compact size saves panel space ??? Extensive diagnostics ??? Load balancing support extends power supply life ??? Use in hazardous locations, with T4 temperature rating ??? Works with a wide variety of power supplies Related Products ??? SDN-C Series power supplies ??? SDN-D Series



Solar Power Combiner. Transformers. UPS (Uninterruptible Power Supplies) Power Supply, AC-DC, 24V, 5A, 320-540 VAC 3-Ph, Enclosed, SDN Series For added reliability, the SDN-C power supplies can be used with the SolaHD Redundancy modules to provide redundant power supply operation. [Read More](#) [Read Less](#) . [VIEW ALL SOLAHD POWER PRODUCTS](#)



SolaHD SDN2X20RED Power Supply Redundancy (RED) Modules, RED MOD 2X20A/1X40A, 12-24Vdc IECEX Redundant power supply operation with true isolation; Compact size saves panel space; Sola SCP30S24-UDN 30W 24V SW PWR SPLY DIN. Sola Hevi Duty. List Price: \$269.27. \$218.78.

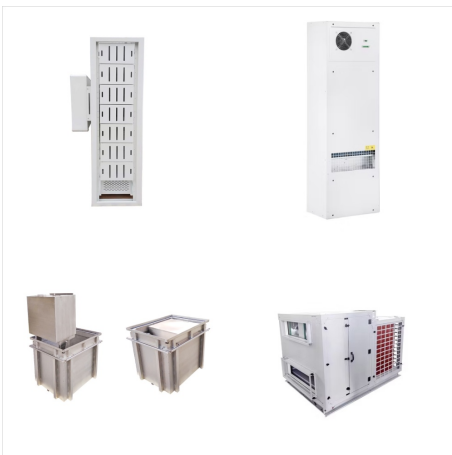
# SOLA REDUNDANT 24VDC POWER SUPPLY



0.63 A @ 24 Vdc / 0.54 A @ 28 Vdc 1.3 A @ 24 Vdc / 1.1 A @ 28 Vdc 2.1 A @ 24 Vdc / 1.8 A @ 28 Vdc 3.8 A @ 24.5 Vdc 3.6 A @ 28 Vdc Overload Behavior Continuous operation at overload/short-circuit: up to 1.5 x Nominal Current Continuous Protection Unit is continuously protected against short-circuit, overload and open-circuit. Power Back Immunity



Solar Power Combiner. Transformers. UPS (Uninterruptible Power Supplies) Power Supply, AC-DC, 24V, 5A, 85-132/176-264V, Enclosed, SDN Series hazardous location approvals and optional redundant accessories allow the SDN-P series to be used in a wide variety of applications. Wide operation temperature range, high tolerance to shock and



CP-A RUD for a true redundant setup of two 24 V DC power supplies with a max. output current of 2.5 A per channel; The perfect solution for 24V DC load circuits ( en - pdf - Leaflet ) Hauptkatalog Teil 1 2023/2024 Rev. I - Stand 10/2023 Kapitel 5 - Elektronische Industrieprodukte ( en - pdf - Catalogue )



# SOLA REDUNDANT 24VDC POWER SUPPLY



Solar Power Combiner. Transformers. UPS (Uninterruptible Power Supplies) Power Supply, AC-DC, 24V, 10A, 85-132/176-264V, Enclosed, SDN Series Download Datasheet. 3D Model / PCB Symbol. In Stock: 38. hazardous location approvals and optional redundant accessories allow the SDN series to be used in a wide variety of applications. Wide



Modules for redundant or parallel power supply operation. The RED module continually monitors the condition of two power supplies connected to a single load. If one power supply fails, These Class 2 Listed, 24 Vdc power supplies are available in single and dual 100 Watt models and are perfect for for your rugged automation needs. Industrial



Rated Output Voltage: 22.5 - 28.5V DC. Rated Output Current: 10 Amps. H x W x D: 4.88" x 3.26" x 4.55". NEC Class 2 / DeviceNet. The SDN DIN Rail power supplies provide industry leading ???

# SOLA REDUNDANT 24VDC POWER SUPPLY



A redundancy module is used to decouple two power supplies and ensures the high availability and productivity of your system. A redundant power supply is particularly necessary in applications with stringent demands regarding operational safety. A redundant system ensures that the failure of one power supply unit does not result in system downtime.



The Sola SCP-X is a rugged power supply designed for use in extreme environments. The metal case reduces costs by eliminating separate enclosures and the quick change connectors simplify connectivity for distributed I/O devices on industrial machinery. This model provides 24 Vdc output with limited power to meet Class 2 requirements.



The modules secure highest reliability and availability in 1+1 and n+1 redundant systems. Learn more. Power supply with integrated decoupling function. 24 Vdc : 240 W : AC 100-240 V | DC 110-150 V for all DIMENSION power supplies : YR80.241 . 12-28 V

# SOLA REDUNDANT 24VDC POWER SUPPLY



240W 24V DIN S/P 115/230V IN IECEX Read more  
Close. Warning. Supports redundant power supply  
operation using optional SDN Redundancy  
modules; Specifications. Output Power 120-960 W  
Output Voltage Range 12 V (12-15 Vdc Adj.) or 24  
V (23.5-28.5 Vdc Adj.)



The Sola SDN-C DIN rail power supplies are the  
next generation of the popular SDN series. These  
models combine high efficiency and compact size  
with new visual diagnostic LEDs to offer the most  
performance available from Sola/Hevi-Duty.  
Essential industrial features such as Sag Immunity,  
Power Factor Correction, and universal voltage  
input have been retained in this series.



Power Supply Modules; SOLA SDN 30/40 RED  
Sola. Sola SDN 30/40 RED Redundant 24v-dc 40a  
Amp Power Supply Product ID: `{ getProductId() }`  
MFG #: `{ product.model }` Subscribe to SOLA. Get  
notified on new and inbound inventory. Sola. Sola  
SDN 30/40 RED Redundant 24v-dc 40a Amp Power  
Supply Product ID: `{ getProductId() }` MFG #:

# SOLA REDUNDANT 24VDC POWER SUPPLY



Uninterruptible power supplies (UPS) Switch, Measure and Monitor. Energy monitoring; Solar power Wind power A safe redundant system is the result of the parallel connection of two power supply units which are decoupled from one another. To further increase system availability, QUINT DIODE provides the solution: decoupling with diode.