

How to test a solar inverter?

Step 1: Test the battery working mode. Before turning on the inverter, only connect the battery with the inverter which means no solar input and grid input. Turn on the switch, the LCD will light up and wait for the battery connecting to load. If the connection is failed, please record the fault code. Step 2: Test the grid charging mode.

How do I install an inverter?

It is recommended to use a Unibit drill. Unused conduit openings and glands should be sealed with appropriate seals. Two screws with washers for fastening the inverter brackets to the wall brackets. Make sure the mounting surface or structure can support the weight of the inverter. CAUTION!

What should I do if my SolarEdge inverter is not working?

Contact SolarEdge support. Contact SolarEdge support. Inverter remotely locked. Contact your installer. Connections to the inverter communication board. Turn the ON/OFF switch to ON to initiate production. RCD Sensor Error. Contact SolarEdge support. Contact SolarEdge support. Over voltage in DC input of the inverter.

Which conductor should I use for my SolarEdge inverter?

Use only copper conductors rated for a minimum of 75°C/167°F. This inverter is provided with an IMI (Isolation Monitor Interrupter) for ground fault protection. The symbol appears at grounding points on the SolarEdge equipment. This symbol is also used in this manual.

How do I open the inverter cover?

The inverter cover must be opened only after shutting off the inverter ON/OFF switch located at the bottom of the inverter. This disables the DC voltage inside the inverter. Wait five minutes before opening the cover. Otherwise, there is a risk of electric shock from energy stored in the capacitors. AVERTISSEMENT!

How far can a SolarEdge inverter be installed?

Make sure the mounting surface or structure can support the weight of the inverter. CAUTION! SolarEdge inverters can be installed at a minimum distance of 50 m/164 ft from the shoreline of an ocean or other saline environment, as long as there are no direct salt water splashes on the inverter.

SOLAR INVERTER SERVICE MANUAL



This manual describes the assembly, installation, operation and troubleshooting of this unit. Please read 6. Do not disassemble the unit. Take it to a qualified service center when service or repair is required. Incorrect For optimum operation of this off grid solar inverter, please follow required spec to select appropriate cable size.



Solar-Log Inverter Installation Manual (269 pages)
Solar-Log??? Rs485/422 B Connection
Assignments (6 Pin) Connecting the Inverters Kline
(Solartec and Sunteams) Sch?co Sgi Series
(Rs485) Brand: Solar-Log | Category: Inverter |
Size: 2.02 MB



View and Download Easun IGrid SS 3KW Plus service manual online. Solar Power System. IGrid SS 3KW Plus inverter pdf manual download. Sign In Upload. Download Table of Contents Contents. The basic operation of the Inverter can be get from the user manual, and make sure you had read and understood the user manual before reading this manual.

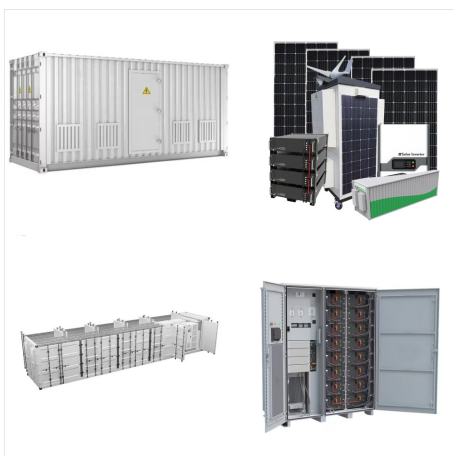
SOLAR INVERTER SERVICE MANUAL



SERVICE MANUAL 3 V201703A 1. General information 1.1 Getting start This manual is used as a checking and repairing guide for. INVERTER VII LV 6KW. model. Before read this Before turning on the inverter, only connect the battery with the inverter which means no solar input and . grid . input. Turn on the switch, the LCD will light up and



View and Download Growatt SPF 5000 ES service manual online. SPF 5000 ES inverter pdf manual download. Sign In Upload. Download Table of Contents Contents. Add to my manuals. Delete from my manuals. Share. Off grid solar inverter split phase 4kw-12kw (17 pages) Inverter Growatt SPF 5000T DVM-MPV User Manual. Off grid solar inverter split



This manual is for Hybrid 10k, it can help service personal perform the basic maintenance and repair service. This manual focus on the service, so you should get the basic operation of the inverter from the user manual, and make sure you had read and understood user manual before you use this service manual. The manual include 4 sections, as

SOLAR INVERTER SERVICE MANUAL



Only qualified service persons are able to service this device. If errors still persist after following troubleshooting table, please send this inverter/charger back to local dealer or service center for maintenance. 14. **WARNING:** Because this inverter is non-isolated, only three types of PV modules are acceptable:



View and Download Must PV1100 PLUS Series service manual online. Solar Inverter/Charger. PV1100 PLUS Series inverter pdf manual download. Also for: Pv11-1200 plus, Pv11-1800 plus, Pv11-2400 plus. Page 8: Fault Code 00/01 When Starting Inverter Service Manual PV1100 PLUS Series (1200VA/1800VA/2400VA) C. PV Charger Board (Figure 1.8) Position



The inverter is equipped with a 3-way switch that performs the following functions: ??? ON - Switches the inverter and the solar charger on. ??? OFF - Switches the inverter and the solar charger off. ??? CHARGER-ONLY - Switches only the solar charger on, while the inverter is switched off. 2.4. LED diagnosis and monitoring

SOLAR INVERTER SERVICE MANUAL



SP SOLAR PUMP INVERTERS (220-240V) ??? LS 2.2K | (380-440V 3-PHASE) ??? 2.2KW, 7.5KW, 11KW, 15KW. Product Catalog. User Manual (LS 2.2K) User Manual *this user manual is for general reference only. please refer to the specific inverter model user manual under Appendix "parallel guide" for more information. BMS RS485 CARD. User Manual

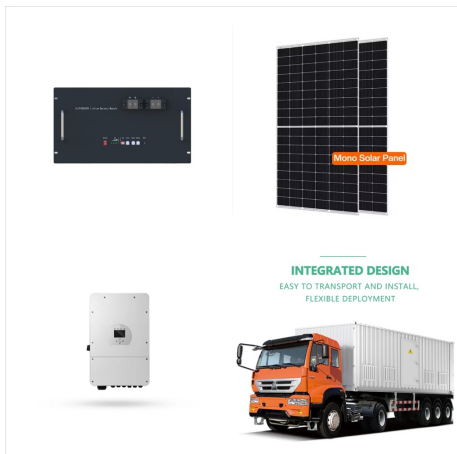


This manual describes the assembly, installation, operation and troubleshooting of this unit. please send this off grid solar inverter back to local dealer or service Hybrid Power System This is a multifunctional off grid solar inverter, integrated with a MPPT solar charge controller, a high frequency pure sine wave inverter and a UPS

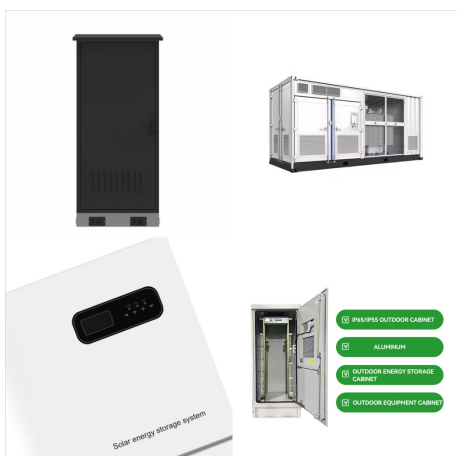


Archived manuals as pdf files and further documents of past Sunny Boy inverters are linked down below: Sunny Boy 2000HF / 2500HF / 3000HF (SB2000HF-30 / SB2500HF-30 / SB3000HF-30) Sunny Boy 2000HF-US / 2500HF-US / 3000HF-US (SB2000HF-US-30 / SB2500HF-US-30 / SB3000HF-US-30)

SOLAR INVERTER SERVICE MANUAL



This manual focus on the service, so you should get the basic operation of the Inverter/Charger from the user manual, and make sure you had read and understood user manual before you use this service manual. Page 5 Axpert MKS-4000/KS-5000 Service manual Please refer to INSTALLATION section of this manual for the details. 10.



This hybrid PV inverter can provide power to connected loads by utilizing PV power, utility power and battery power. Figure 1 Basic hybrid PV System Overview Depending on different power situations, this hybrid inverter is designed to generate continuous power from PV solar modules (solar panels), battery, and the utility.



3. Do not disassemble the unit. Take it to a qualified service center when service or repair is required. Incorrect re-assembly may result in a risk of electric shock or fire. 4. To reduce risk of electric shock, disconnect all wirings before attempting any maintenance or cleaning. Turning off the unit will not reduce this risk. 5.

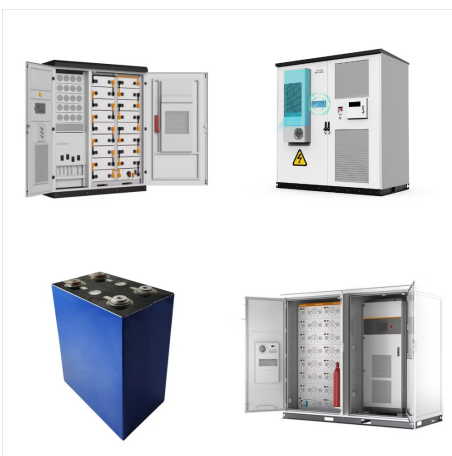
SOLAR INVERTER SERVICE MANUAL



inverter that connects to the PV Link??? optimizers and PWRcell Batteries to form the Generac PWRcell system. This manual provides instructions for installing the PWRcell Inverter, including mounting, wiring, and battery integration information. The information in this manual is accurate based on products produced at the time of publication.



View and download Solar inverter manuals for free. 2KVA instructions manual. Sign In Upload. Filter results: Brands Service Manual 3; Results 1-20 of 750 . Growatt 2KVA User Manual (24 pages) Off grid solar inverter. Target Group Product Overview Battery Connection Lcd Setting Display Setting Operating



3. Do not disassemble the unit. Take it to a qualified service center when service or repair is required. Incorrect re-assembly may result in a risk of electric shock or fire. 4. To reduce risk of electric shock, disconnect all wirings before attempting any maintenance or cleaning. Turning off the unit will not reduce this risk. 5.

SOLAR INVERTER SERVICE MANUAL



Only qualified service persons are able to service this device. If errors still persist after following troubleshooting table, please send this inverter/charger back to local dealer or service center for maintenance. 14. WARNING: Because this inverter is non-isolated, only three types of PV modules are acceptable:



Page 19 Solar and Utility Solar energy and utility will (default) charge battery at the same time. Only Solar Solar energy will be the only charger source no matter utility is available or not. If this inverter/charger is working in Battery mode or Power saving ???



Page 1 (R) AURORA Photovoltaic Inverters
INSTALLATION AND OPERATOR's MANUAL
Model number: PVI-2000-OUTD-AU Rev. 1.0; Page 2: Save These Instructions Installation and operator's manual Page 2 of 65
PVI-2000-OUTD-AU Rev.: 1.0) REVISION TABLE
Document Author Date Change description Revision
Gianluca 27/10/2008 First release of the document
???

SOLAR INVERTER SERVICE MANUAL



View and Download Voltronic Power AXPERT MAX II 8KW service manual online. AXPERT MAX II 8KW inverter pdf manual download. Sign In Upload. Download Table of Contents Contents. Add to my manuals. Delete from my manuals. Inverter/charger 5kva with mppt solar charger (47 pages) Inverter Voltronic Power 3KVA User Manual. Inverter / charger (33

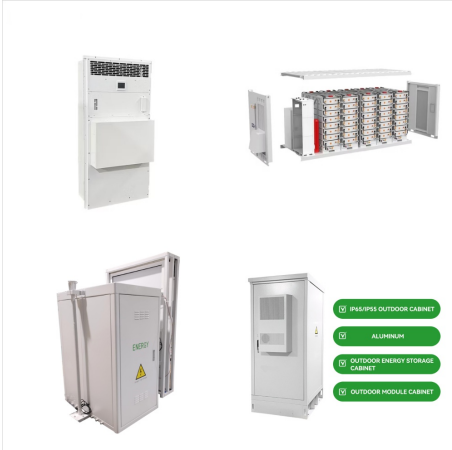


Series Inverter should give your solar power system many years of trouble-free operation. Your new Inverter is a complex electronic system, and over its life-time it will be confronted with a variety of local conditions. If a malfunction of your Sunny Roo Series Inverter occurs, please contact your specialised dealer directly. Your



MLV 5KVA-48V inverter pdf manual download. Sign In Upload. Download Table of Contents Contents. Inverter Axpert Max 3600 Service Manual (30 pages) Inverter Axpert RCT-AXVM2-PREM 1.2K-12V User Manual combining the functions of inverter, MPPT solar charger and battery charger to offer uninterruptible power support with portability. Its

SOLAR INVERTER SERVICE MANUAL



Download SUOER 1000W SOLAR INVERTER SCH service manual & repair info for electronics experts. Service manuals, schematics, eproms for electrical technicians SUOER 1000W SOLAR INVERTER SCH. Type: (ZIP) Size 552.8 KB. Page---Category OTHER SERVICE MANUAL. If you get stuck in repairing a defective appliance download this repair information ???



Page 19 Battery fully charged 48.0V 49.0V 50.0V 51.0V 52.0V Setting voltage point back to battery mode when selecting "SBU priority" or 53.0V 54.0V "Solar first" in program 01. 55.0V 56.0V 57.0V 58.0V If this inverter/charger is working in Line, Standby or Fault mode, charger source can be programmed as below: Solar first Solar energy