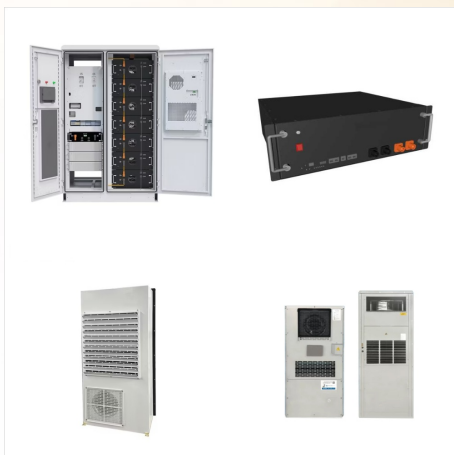




The SLP090-24U 90 watt, 24 volt poly-crystalline solar panel from Solarland(R) is a standard-use module featuring exceptional low-light performance in a rugged frame. Quick view. Solarland(R) 50 Watt, 12V Solar Panel w/ 3" MC4 Cable (SLP050-12U-MC)



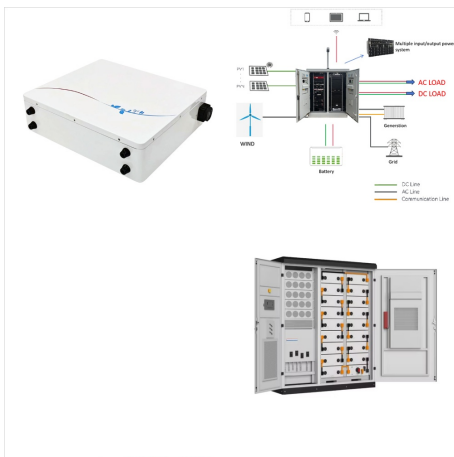
A 12V solar panel can be converted into 24V by connecting it to another 12V panel. Connect the positive terminals of one solar panel to the negative terminals of another solar panel, and the voltages will be added up . How to Convert 12V Solar Panels into 24V Solar Panels. There are two ways to connect solar panels, by series or parallel



TSQ20W 24V 20W Solar Panel Kit (ASIN:B09PH859S5): converts gate opener to solar, including 2 x 10W solar panels TCS3 Solar Charge Controller (ASIN:B07ZTC6317) : intelligent management of charging, provides protections for batteries



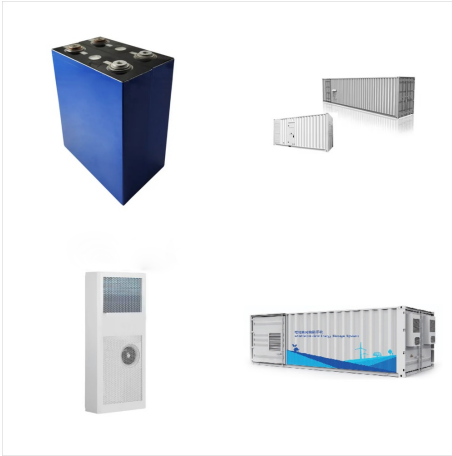
Amazon : Newpowa 9BB 120W 24V Solar Panel
High-Efficiency Monocrystalline 24V PV Module
Designed for 24V Off Grid System, Charge Your
24V Battery of RV, Boat, Camper, Trailer, Gate
Opener : Patio, Lawn & Garden



The 12V/24V in product titles (ex. 100W 12V Monocrystalline Solar panel) does not refer to the actual voltage (V_{oc} or V_{mp}) of the solar panels, but rather to the voltage of the solar system or energy storage system to which the panel is best suited. The voltage of the solar panel must be higher than the solar system voltage.



A solar panel wiring diagram (also known as a solar panel schematic) is a technical sketch detailing what equipment you need for a solar system as well as how everything should connect together. There's no such thing as a single correct diagram ??? several wiring configurations can produce the same result.



W Monocrystalline solar panel kit is perfect for 12V battery charging or multiple panels can be wired in series for 24/48-volt battery charging or for grid-tied applications. Each solar panel comes with 90mm solar cable with Male/Female quick connectors.



24V solar panels are better suited for larger, expandable systems. Since they can deliver more power with less current, they require smaller wire sizes, which can result in cost savings for your entire system. Additionally, higher voltage systems can handle larger loads, making them ideal for powering energy-intensive appliances or devices.



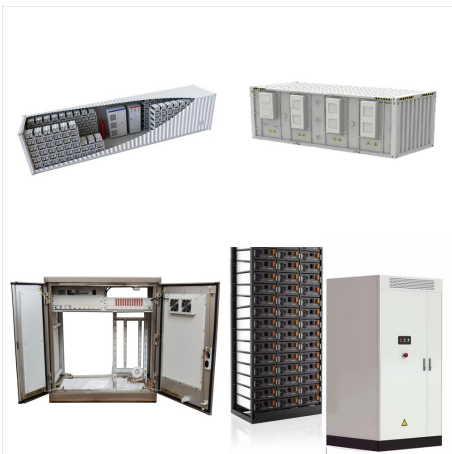
24V solar panels look similar to 12V panels but are bigger and contain twice as many solar cells, totaling 72 cells. They can still be installed in many places, despite their bigger sizes. They can produce much higher voltages that range between 1,500-2,000 watts.



This blog is for those audience. It tries to differentiate between a 12V solar panel and a 24V solar panel. A 12V solar panel is generally suitable for small residences or projects of smaller size in contrast to a 24V solar panel. Other than this basic thumb rule, there are different technicalities to consider when deciding between the two.



The SLP090-24U 90 watt, 24 volt poly-crystalline solar panel from Solarland(R) is a standard-use module featuring exceptional low-light performance in a rugged frame. Quick view. Solarland(R) 30 Watt, 12V High-Efficiency Mono-Crystalline Solar Panel ???



Series Connection of Solar Panels and Batteries with Automatic UPS System ??? 24V Installation. In this solar panel wiring installation tutorial, we will show how to wire two solar panels and batteries in series with automatic UPS/Inverter for 120V-230V AC load, battery charging and direct DC load from the charge controller.. PV panels and batteries are available in the range of 12 ???



Find out how solar panel voltage affects efficiency and power output in our comprehensive guide. Get expert insights and tips for optimal solar power performance. or 24V. Keep in mind that the collective voltage of an array changes depending on the setup. When going solar, consider these three types of voltages. They will help you make an



Pro-Series 265 Watt 24 Volt Solar PV Panel (SW265M) Quick view. SolarWorld SunModule Plus 285 Watt, 20V Monocrystalline Solar Panel w/ Silver Frame (SW285M) SolarWorld. SolarWorld SunModule Plus 285 Watt 20 Volt Solar PV Panel Quick view. SolarWorld SunModule XL 325 Watt, 24V Monocrystalline Solar Panel (SW325M)



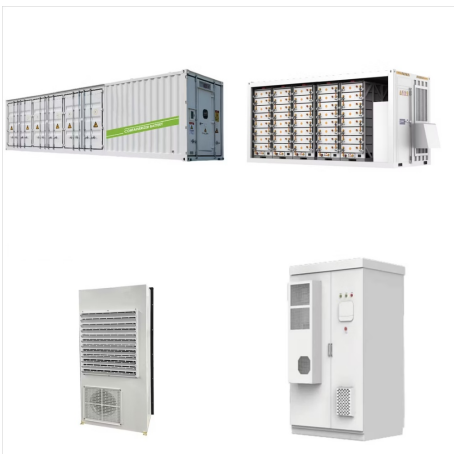
This powerful, portable 100W 24V solar panel can harness the power of the sun to charge the Safari??? portable power unit in as little as 2.5-3.5 hours when six panels are combined together. Safe ??? Produces zero emissions, no carbon footprint during use;



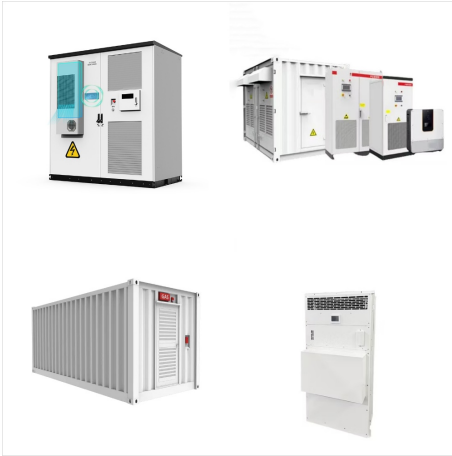
24V Solar Panel. The 24V solar panel is built in the same way as the 12V structure. Despite having roughly double the number of cells, it stands out. It is capable of powering a full home when paired with a 24V system and ???



Rich Solar's MEGA 200 Watt 12V and 24V Solar Panels are the industry standard for all solar panels. These 200 Watt panels allow for easy installation and handling for various applications (high-end off-grid and mobile applications), come with pre-drilled holes for compatibility with ground mounts, Z brackets, pole mounts, and tilt mounts, and are compatible with on-grid and ???



The 12V/24V in product titles (ex. 100W 12V Monocrystalline Solar panel) does not refer to the actual voltage (Voc or Vmp) of the solar panels, but rather to the voltage of the solar system or energy storage system to which the panel is best suited. The voltage of the solar panel must be higher than the solar system voltage.



If you're using a 24V battery bank and a 24V inverter, you'll want to bring your solar panel voltage up to 24V as well. This can be done either by using 24V solar panels and connecting them in parallel (since this leaves voltage alone) or by connecting sets of two 12V solar panels in series (since this will double the voltage to 24V) and



550W/24V Mono Perc Halfcut Solar Panel ???
17,000.00 (Inclusive of all taxes) For more details, visit the Warranty section under Specifications.
Luminous offers a range of both Mono PERC halfcut solar panels and Polycrystalline PV modules. Our panels comply with IEC standard and are suitable for a wide range of applications.



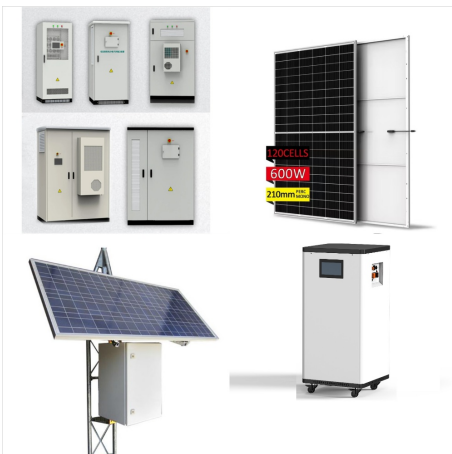
Summary. You need around 500-700 watts of solar panels to charge most of the 24V lead-acid batteries from 50% depth of discharge in 5 peak sun hours.; You need around 1-1.2 kilowatt (kW) of solar panels to charge most of the 24V lithium (LiFePO4) batteries from 100% depth of discharge in 5 peak sun hours.; How Many Solar Panels Does It Take To Charge A ???



Newpowa 30W 24V Solar Panel High-Efficiency Monocrystalline 24V PV Module Designed for 24V Off Grid System, Charge Your 24V Battery of RV, Boat, Camper, Trailer, Gate Opener. 4.4 out of 5 stars. 277. 100+ bought in past month. \$49.99 \$ 49.99. FREE delivery Mon, Aug 5 . Only 9 left in stock - order soon.



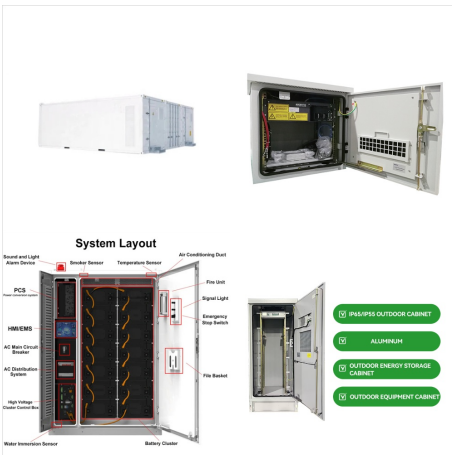
Then a 24-volt solar panel array would be a better fit. 24 Volts System. For A 24-Volt System, you will need a 24 Volt Inverter and a 24-Volt battery or a 24-volt battery bank. With higher voltage systems, you will be dealing with lower current and lower ???



The 8 x 100W solar panels don't take up much roof space, but their energy can offset some large-size loads such as television, washing machine, electric stove, etc. With the Rover Li 60A MPPT charge controller, the kit can meet your further power needs by adding more of the same solar panels; for example, a 24V system expandable up to 1600W.



Solar Panel Surya Solana 24v 24 v 250wp 250 wp
All Black Series SNI. Rp1.550.000. 2 terjual. KA
Bandung Battery Surabaya. SOLANA SOLAR
CELL/PANEL SURYA/SOLAR PANEL
MONOCRYSTALLINE 24V 450WP. Rp3.375.000.
Diskon 50rb. APC CGS Jakarta Utara. Solana Panel
Surya Monocrystalline 24V 200B 200 WP All Black
Series SNI.



200W 24V Monocrystalline 9BusBar Solar Panel
from Newpowa, \$229.99 with Free Shipping for
Domestic Orders (48 States). Corrosion Resistant
frame protects a cell efficiency of 21.3% for
camping, marine, and countless other applications.
Has a 2yr limited parts & workmanship warranty, a
10yr 90% Output, and a 25yr 80% Output Warranty.
Get Yours Today!



The included PERC solar cells are efficient and help
make the panel smaller and lighter. Compared to a
regular 72 cell 300 watt panel this panel is 15-20%
shorter and lighter. Complete a large scale project
with 300W solar panels, perfect for on-grid or
off-grid projects. Please Note: This product is not
eligible for free shipping.



A Hybrid system is when your solar panels remain connected to the grid's power lines and have a backup battery system to store excess power. 4. How many kWh a day does this solar panel produce? 16 Eve 280A in a 24V 8S2P configuration yielding ~ 15KW-hr of storage. I use a Giandel 4000 W inverter. Previous 5K battery required generator for