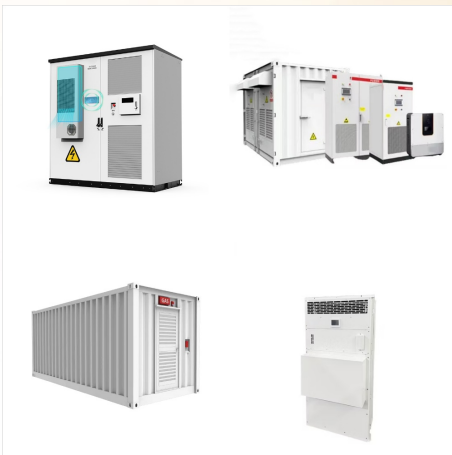


I am planning to build a swimming pool heater, using a solar panel to drive a bilge pump which circulates pool water through 1/2" x (2 x 60) m poly irrigation tube to heat swimming pool. Solar panel with following spec: Solar panel = 300 W; Power under normal conditions: 20 - 100 W; Waterproof Rate: IP65; Size: 33.4 \* 20.3 \* 1.6 cm



Amazon : Automatic Boat Bilge Pump Solar Fountain Pump, Solariver - Solar Water Pump Kit, Sun-Powered Submersible Water Fountain Outdoor Feature, 160+ GPH with 12-Watt Solar Panel (12V), Small Fountain Pump, Water Feature, Hydroponics & ???



SEAFLO 01 Series 3500GPH Seaflo Submersible Solar Pump. SEAFLO non-automatic submersible pumps offer standard action activated by a panel or float switch. Removable strainer for easy replacement or in the event that the pump becomes clogged with debris. SEAFLO 01 Series 1100GPH Seaflo Bilge Pump; SEAFLO 41 Series Diaphragm Pumps 12V/24V 3



Package: 12 Wat solar Panel\*1,Water pump\*1,Solar Panel Stakes\*3,Extension Rod\*4,Nozzles\*2,User Manual\*1. Please read prior to purchasing: This water pump is powered by a solar panel in direct sunlight (battery NOT included). The flow of water is determined by the sunlight intensity.Does not run at night ??? See more product details



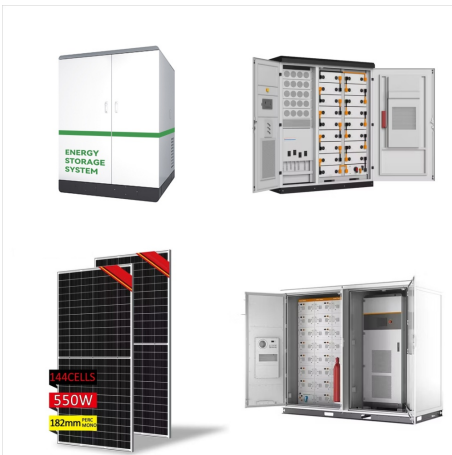
For years, sailors and engineers have sought a solution to this seemingly eternal problem, and now it appears the folks at Sea Joule Marine may have finally found it in their new Solar Bilge Pump. Powered by a 2-watt solar panel mounted atop its enclosure, the pump has a fully-integrated float switch and sends collected rainwater overboard via



Re: Automatic bilge pump setup & solar charger with controller? its very simple: buy a deep cycle battery, panel of at least 15 watts, a charge controller rated just a bit more than your panel, IE if the panel is 85 watts get at least 100 watt controller, the automatic pump & some boat cable you will also need wirecutter/stripper/crimper



The original version Sun Pump is a solar powered bilge pump that will keep your unattended open boat from filling with rain water! The Sun Pump automatically bails your boat when it rains and then recharges in the sun! 2.5W, durable ???



Sea Joule Marine introduces the Solar Bilge Pump, Model 750-7AH-TD, a self-contained solar rechargeable bilge pump system that comes with a 2-watt solar panel mounted to the top of the enclosure. A float switch inside the unit detects incoming water and activates the pump, which discharges the water through a 3/4 -inch discharge outlet connected



I know very little about solar setups. what I want to do is run a 12 volt (4 amp) bilge pump from a solar panel in a small pond without using a battery. I ordered a 30 watt solar panel and a 10 amp 24v-12v voltage regulator. When I hook them together the bilge pump just barely runs. I assume I am not getting enough amps from my solar panel.



The RSE12V and RSE24V can be charged directly from solar panels. These pumps can be useful when 240V power is not available. Solar & battery powered sump pumps can be used in greywater pits, sump pits, sullage, waste water, general dewatering, and bilge pumping. Vortex style pumps can handle some grit and dirt.



To avoid this situation, you can simply connect DC buck converter between your solar panel and water pump which will help to supply only upto 12v power to your water pump. Share. Cite. Follow answered Apr 29, 2023 at 17:27. Harshu Harshu. 1 \$endgroup\$ Solar Powered Bilge Pump for Pool Heater.



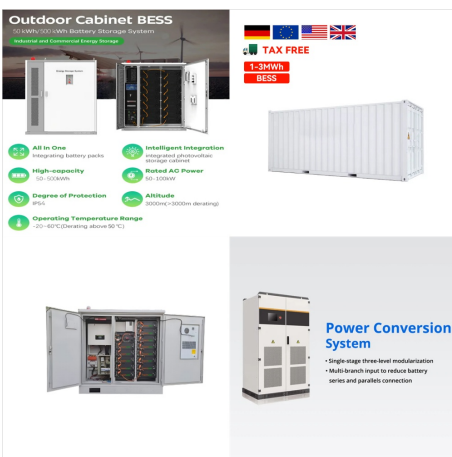
Solar panels are more or less current sources (50% sun=50% torque). The LCB takes solar panel power at low current and fixed  $V_{mp}$  ( $=V_{mp} \cdot I_{sun}$ ) and converts to high current & low voltage used to start the pump motor). Solar panels, when there is, at least, weak direct sun, run a constant  $V_{mp}$  and low  $I_{sun}$  current.



SEAFLO 01 Series 1100GPH Seaflo Submersible DC Solar Pump. SEAFLO non-automatic bilge pumps offer water evacuation activated by a panel or float switch. Our larger impeller design and more robust motor allow us to outperform our competitors. Our removable strainer base fits industry standard mounting conventions though, so you'll have no



Many of the places that sell the little 12v solar maintainers, typically 5watt panels or less, also sell slightly larger panels like 15 watt versions along with some cheap controllers. Example: On my 55ah (at the 20hr rate) battery, I would choose a panel that had less than a maximum of .55a (550ma) total output for use with no controller.



AURELIO TECH Automatic Boat Bilge Pump Float Switch 12V 24V 32V Ignition protected Mercury. It has a durable, weather and crack resistance 2.4W 12V solar panel and a new, redesigned AUTO/MANUAL 2 way switch. It is all enclosed in a durable ATTWOOD marine battery box that resists weathering and damage. With over 1100 pumps now in service, it





Get the redesigned Sun Pump 2.0 to do your bailing! The battery powered Attwood bilge pump is float switch activated and will cycle on and off during a rain event to remove water. The integrated solar panel then recharges the battery ???



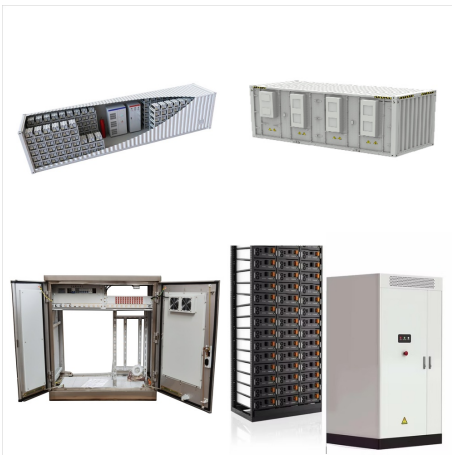
Solar Bilge Pump Courtesy Of Sea Joule Marine. But it also has a small solar panel mounted on top of the pump/battery unit that's able to keep the battery charged, and the pump pumping, as long as it's exposed to the sun. Installation couldn't be easier. Place it in the bilge's lowest point, run the .75-inch discharge hose over the



I have few solar pumps ready kit, all without battery and come with 10-20W panel. So far, all doing great. I see that Bilge pump quite affordable(\$15), is that the down side, can easy burn out if example I use 12V 50W panel without battery and charger controller? So some pump will last longer if run from a battery compare direct to solar panel?



I then decided to fit a 8 watt solar panel that supposedly is not powerful enough to overcharge a battery but sufficient to keep the battery charged up. After fitting this I never had a flat battery again. The bilge pump was a Rule 750 connected through a float switch so when the pump was not working there was no battery drain.



Howdy, Next week I plan to install a new 18 watt solar panel on my small boat to keep the 12v boat battery charged. When my boat is not in use the battery also periodically runs a 3A 12v bilge pump to keep rain water out of the bilge. My last (5w) solar panel seemed to work fine with this arrangement - until it, and the battery, were recently stolen.



The solar panels will have negative and positive wires that need to be connected correctly to the negative and positive wires of the bilge pump so it will turn in the correct direction. This water feature was installed in 2013 and still provides auditory and visual sensations in the gardens.



[ 100W BASIC SOLAR WELL PUMP KIT ] - The basic solar water pump kit, including the necessary 100W solar panel, controller and water pump, and a 16.4 inch cable. 10-Foot Water Level Sensor with Honeywell Microswitch and Adjustable Tether Length for Ground Water Bilge Pump and Water Tank ??? Non-Corrosive PP Casing, Rated to 13 Amps. \$24.



The bilge pumps operate automatically with electronic float switches when all switches and breakers are in the OFF position. However, the BILGE PUMP and BILGE PUMP2 will run continuously once their switches are placed in the on position. Monitor the outflow accordingly. Do not run when dry. 12V 750GPH 2 1 High Bilge Alarm Aft Bilge Pump Forward

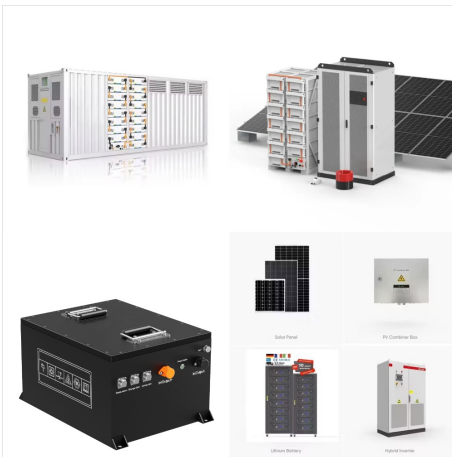


The Sun Pump is a solar powered bilge pump that keeps your unattended boat from filling with rain water! The Sun Pump automatically bails your boat of rainwater and then solar recharges it's battery when the sun reappears. The 3 watt solar panel trickle charges the 12 volt sealed lead acid battery that powers the 500 gallon per hour





The solar panel is 26 x 17 cm and is best mounted on the aft thwart. The main goal is to make sure that the solar panel get as much sun as possible when the boat is moored. Included in the package The solar-powered bilge pump comes with a complete kit including mounts and accessories. Instructions for use in Swedish are included in the package.



The battery can be charged by solar power. The RSE12V and RSE24V can be charged directly from solar panels. These pumps can be useful when 240V power is not available. Solar & battery powered sump pumps can be used in greywater pits, sump pits, sullage, waste water, general dewatering, and bilge pumping.