

What is Jackery solar generator 1000?

Jackery Solar Generator 1000 is a solar solution that combines Jackery Explorer 1000 Portable Power Station with SolarSaga 100W solar panels. It converts sun energy captured by SolarSaga 100W solar panels into electrical power and then stores it in the Explorer 1000 Portable Power Station for later use.

Does Jackery explorer 1000 come with solar panels?

The new Jackery Explorer 1000 is currently the most popular power station/solar generator made by Jackery. Even though it's a so-called solar generator, it doesn't come with solar panels, but it has a powerful MPPT solar charge controller that lets you charge the battery within hours with compatible solar panels. Check Price at Amazon

How much does a Jackery solar panel cost?

Jackery SolarSaga Solar Panels are available in different price ranges, starting from \$129 to \$699. If you are looking to charge small devices such as smartphones and laptops on the move, the foldable Jackery SolarSaga 40W Solar Panels would work great and cost merely \$129.

What is a Jackery solar charger?

Jackery's portable solar panels are built with highly efficient monocrystalline silicon solar cells to convert maximum sunlight into electricity. The IBC solar technology ensures continuous and stable output, which makes these solar chargers ideal for high temperatures or cold environments. On-the-Go power source with quick installation.

What is the warranty on a Jackery solar generator?

Explorer 1000: 2-year warranty +1-year extended warranty. Solar Saga 100W: 2-year warranty +1-year extended warranty (automatically applied when purchased from our official website) Jackery Solar Generator 1000 is a solar solution that combines Jackery Explorer 1000 Portable Power Station with SolarSaga 100W solar panels.

How long does it take to install Jackery solarsaga solar panels?

Jackery SolarSaga Solar Panels can be installed in as little as 60 seconds without the need for any specialized tools. Just connect the solar panels to the portable power station using the solar cable to build your solar generator for charging appliances. Their lightweight and portable design makes them easy to carry

around.



The highest monocrystalline cell efficiency, lightweight nature and easy solar panel installation make Jackery solar panels ideal for camping, living off-grid, or planning an RV trip. Solar Generator 1000 Plus 1264Wh Capacity | LiFePO4 Battery
Solar Generator 1000 v2 1070Wh Capacity | Emergency Charge 1 Hrs



To connect the solar panels with a checkmark next to "Requires Additional Adapter" to the Jackery power stations, you need to use an adapter like this (click to view on Amazon). NOTE if you have an Explorer 1500 or 2000: The latest Explorer 1500 and 2000 use proprietary 8mm connectors.



. Solar Panel Wattage. Generator Only. Start Type. Push Button. Starting Wattage. 2000. If you're looking to utilize solar power with your Jackery portable power station indoors, a solar panel extension cable is indeed a practical solution. Here's how you can set it up: ?? Purchase a 5-meter (16-feet) Solar Panel Extension Cable: This

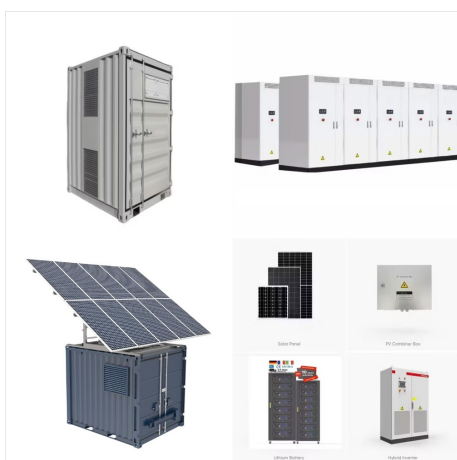
SOLAR PANELS FOR JACKERY 1000



Jackery Solar Generator 1000 is a solar solution that combines Jackery Explorer 1000 Portable Power Station with SolarSaga 100W solar panels. It converts sun energy captured by SolarSaga 100W solar panels into electrical power and then stores it in the Explorer 1000 Portable Power Station for later use. This solar generator is a reliable and



Jackery SolarSaga 100W Solar Panel to is a portable & small solar panel for multi-uses with a high conversion efficiency of solar panels. It's your ideal camping solar panel for outdoor living. Jackery Explorer 1000 Pro Portable Power Station. price. Jackery Explorer 2000 Plus Portable Power Station. price. Jackery Explorer 300 Plus



The Jackery SolarSaga 100W Solar Panel. The SolarSaga 100W (click to view on Amazon) is currently the largest solar panel made by Jackery, and it's easy to understand why they chose to make a 100W panel.. Solar panels rated at 100 watts are the most popular size when it comes to portable panels since it's not too small and not too large.

SOLAR PANELS FOR JACKERY 1000



How To Connect Solar Panels To The New Jackery Explorer Pro And Plus Power Stations. 1000 cycles to 80%+ capacity. 1000 cycles to 80%+ capacity. 4000 cycles to 70%+ capacity. 2000 cycles to 70%+ capacity. Adapter(s) included. DC7909 to USB C. 2 x DC7909 to DC8020. 2 x DC7909 to DC8020.



Jackery was founded in Silicon Valley in 2012. With state-of-the-art R&D and manufacturing expertise, Jackery launched the first Lithium Portable Power Station in 2015. As an industry leader in solar generators, Jackery will strive to continue the vision and commitment to providing green energy solutions and powering outdoor life.

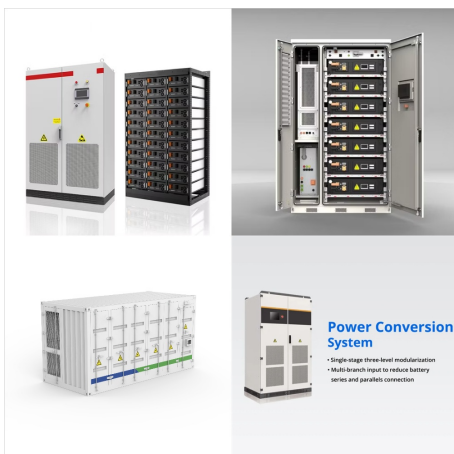


Equipped with a 1002Wh battery UKcapacity and multiple ports, Jackery Explorer 1000 Portable Power Station is one of the most powerful power stations. The built-in MPPT charge controller ensures efficient and stable solar charging to power CPAP machines, electric grills, computers, cameras, and communiUKtion devices. -Jackery UK

SOLAR PANELS FOR JACKERY 1000



Buy Jackery SolarSaga 100W Portable Solar Panel for Explorer 240/300/500/1000/1500 Power Station, Foldable US Solar Cell Solar Charger with USB Outputs for Phones? 1/4 ?Renewed? 1/4 ? : Solar Panels - Amazon FREE DELIVERY possible on eligible purchases BEST Solarsaga 100 Watt Solar Panel for Jackery 1000 - 1500.
????FreeToFamily?-??,??-??,??-?



With unparalleled output, the Jackery Explorer 1000 Plus is the top choice for similar-level portable power stations. Covering various scenarios, it provides support for camping, off-road travel, home emergencies, and more. Being versatile and expandable in capacity, it's the all-in-one portable power station to power your life.



Ultra Fast Solar Charging: Enjoy the fastest solar charging with a power rating of 200W. It takes only 2.5 hours to achieve a full charge by connecting to 6 pcs of our SolarSaga 200W Solar Panels, due to its full compatibility with all Jackery Portable Power Stations and Solar Generators, including the Explorer 1500 Pro/2000Pro/2000 Plus/3000Pro.

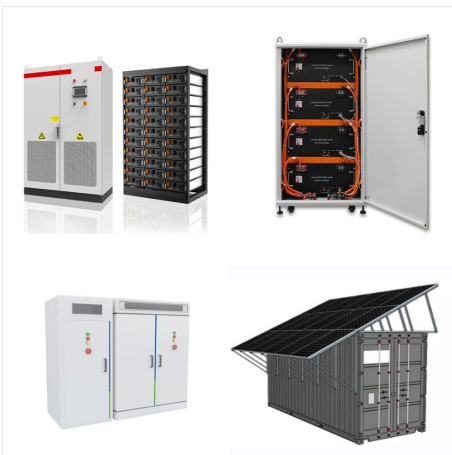
SOLAR PANELS FOR JACKERY 1000



LOW CARBON LIVING WITH JACKERY: Packed with Jackery SolarSaga solar panels, it's a 100% clean energy source that emits no fumes or gas, making it ideal for indoors, outdoors, or off-grid living. Satisfaction Assurance: Jackery offers a 2-year standard warranty plus 1-year extended warranty to Explorer 1000 (Extended warranty: automatically



Jackery solar generator 1000 is a solar power solution that combines Jackery Explorer 1000 portable power station with SolarSaga 100W solar panels. This solar generator is a reliable and clean power source for campers, RVs, or as an emergency backup when power outage. -Jackery UK



Having owned a Jackery 1000 for a couple of summers now, I am firmly convinced that solar power is the way to go in my off-the-grid cabin in Northern Maine. I do need something more for sure, but still see utility in hanging on to my Jackery "till such plans can be realized.

SOLAR PANELS FOR JACKERY 1000



Jackery says that if you use a pair of Solar Saga panels (there's an adapter included with the Explorer 1000 to connect dual panels), the portable power station should be fully charged in about



Discover the Jackery Explorer 1000's solar charging capabilities. To charge a Jackery Explorer 1000 portable power station, you can use Jackery Solar Panels, wall outlets, or carports. Designed with portability in mind, the Explorer 1000 features a compact and lightweight design. Take it anywhere your adventures lead you, whether camping in the



Jackery Explorer 1000 Pro can support 90% of your daily used appliances, from mobile phones to refrigerators, and even pumps; this solar charging power station can easily cover them all. The Explorer 1000 Pro delivers immense solar power - from RV trips to home emergency back up.

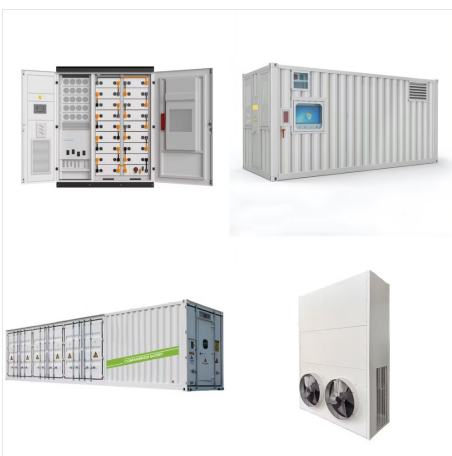
SOLAR PANELS FOR JACKERY 1000



The Jackery Explorer power station lineup currently consists of the Explorer 160, 240, 500, and 1000. All of them can be charged in three ways, with the included wall or car charger, and solar panels. Even though portable power stations like these are often called solar generators, they don't include solar panels unless you purchase a kit.



The only difference between them is the solar panels. For instance, the Jackery Solar Generator 1000 Plus has Jackery SolarSaga 100W Solar Panels, whereas the Jackery Solar Generator 1000 Plus Roam Kit features highly efficient Jackery SolarSaga 100 Prime Solar Panels that can be set up on a vehicle's rooftop or in balconies.



All the Jackery Explorer Portable Power Stations support multiple charging solutions, including car chargers, wall adapters, and Jackery SolarSaga Solar Panels. Jackery Explorer 1000 Plus is one the fastest charging solutions that can be recharged in only 2 hours using 6* Jackery SolarSaga 200W Solar Panels.

SOLAR PANELS FOR JACKERY 1000



Jackery solar generator 1000 is a solar power solution that combines Jackery Explorer 1000 portable power station with SolarSaga 100W solar panels. This solar generator is a reliable and clean power source for campers, RVs, or as an emergency backup when power outage. -Jackery CA



-Watt Portable Solar Panel, SolarSaga 200W for Explorer 1000 Pro/1500/2000 Pro/3000 Pro/2000 Plus Power Station (46) Questions & Answers (35) Hover Image to Zoom. Share. Print. Shop Black Friday Deals. Limit 5 per order \$ 479. 00

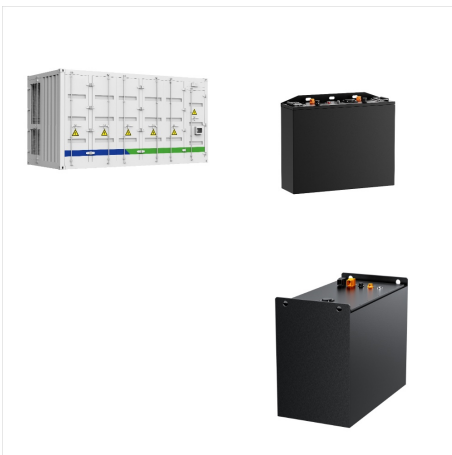


It looks like the 200w jackery solar panel does not work on Jackery Explorer 300. If I get the 100W, does the Jackery 300 get charged thru solar panel and also charge a portable fridge? I. Regarding the Jackery 1000 Watt Power Station, and based on information from your blog, I am inclined to use the Anderson Poles and below wires/adapters

SOLAR PANELS FOR JACKERY 1000



The Adapter That Lets You Connect Two SolarSaga Panels Together. The output on the Jackery solar panels is what's called an 8mm connector, more precisely a 7909 connector. All the Explorer power stations from 1000 and smaller have a 7909 input, while the larger and newer Explorer 1500 and 2000 have a slightly different connector.



Equipped with a 1002Wh battery capacity and multiple ports, Jackery Explorer 1000 Portable Power Station is one of the most powerful power stations. The built-in MPPT charge controller ensures efficient and stable solar charging to power CPAP machines, electric grills, computers, cameras, and communication devices. -Jackery CA