

Can you install solar panels on a slate roof?

Get an estimate with our calculator. Yes, you can install solar panels on slate roofs, but the process requires specialised techniques and equipment. Homeowners often worry about whether their specific roof type, such as slate, can support solar panel installations due to its unique characteristics.

Can solar panels damage a slate roof?

When installed correctly by experienced professionals, solar panels should not damage a slate roof. However, if installed improperly, there is a risk of cracking or breaking a significant number of slate tiles, which can lead to costly repairs.

Are slate tiles bad for solar panels?

Slate is a smooth stone material. When it's combined with a steep pitch it can cause issues for solar panel installers. Unlike installing solar panels on a metal roof, slate tiles are prone to breaking and cracking. A few slate tiles will inevitably crack or break in the installation process.

Can a slate roof be installed on a metal roof?

Unlike installing solar panels on a metal roof, slate tiles are prone to breaking and cracking. A few slate tiles will inevitably crack or break in the installation process. Good replacement material for these tiles is artificial slate. This is more cost-effective than purchasing single tiles of real slate.

Are solar shingles a good option for a slate roof?

Solar tiles, or solar shingles, are another innovative solution for homeowners who want to maintain the traditional look of their slate roof while harnessing solar energy. These tiles function like traditional roof tiles but are capable of generating electricity.

Can a certified solar installer fit a slate roof?

With enough time, care, and knowledge though, a certified installer can fit a series of solar panels without damaging your tiles or altering the rest of your roof in any noticeable way. The proof is in the pudding or, in this case, on the slate roofs of countless UK homes that have already gone solar.



Benefits of Solar Panels on Slate Roofs . Despite the challenges, there are distinct benefits to installing solar panels on slate roofs: Enhanced Property Value: Combining the elegance of slate with the modern appeal of solar panels can boost the overall value of your property. Eco-friendly: Slate is a natural, sustainable material. Pairing it



The Elite Power Roof is a simple technique integrating natural slate roofing or ceramic tiles seamlessly, with or without, solar panel inserts. Unlike traditional methods of solar panel installations, this powerful panel system is fully integrated with your homes roof slate and it does not compromise the aesthetics of your roof-line.



We solve a unique problem in the solar industry: safely mounting solar panels to slate roofs without damaging the roof. Our patented product, the SlatePlate, is an innovative solar mounting solution crafted by and for solar experts. The SlatePlate allows installers to mount solar panels to slate without compromising the beauty or integrity of



Slate Roofs and Solar Panels. Solar panel installation has become increasingly popular, allowing households to reduce their reliance on the National Grid by generating their own energy. While asphalt, metal, tile, tar and gravel roofs are typically the best for solar panels, it's also possible to install them onto a slate roof.



Many solar panel installers and roofing companies will tell you that a solar panel slate roof installation in Sydney is an impossible task, but that's not always the case. In reality, many companies refuse to supply solar panels for slate roofs because of the difficulty involved with the installation, but our roofing contractors now how to



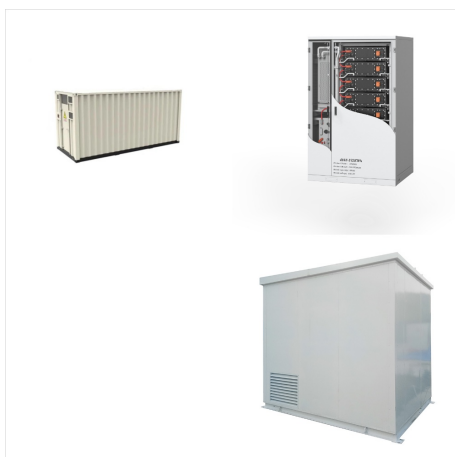
Investments in rooftop solar panels are highlighted as smart choices. They offer big benefits for both wallets and the environment. India aims for 500 GW from clean sources by 2030, putting solar in the spotlight. With over 20 years in the game, Fenice Energy is a reliable partner for those looking to make the switch.



The best roofing materials for solar panel installation. The type of material your roof is made of is a crucial aspect of solar installation. The ease of installation, as well as the safety of the home and the solar installer, are considered when solar retailers provide quotes to their customers. To install solar on a slate roof, a portion



With the rise in demand of rooftop solar panels, the challenge of installing solar on a slate roof without damaging the structure is increasing. Made Specifically For Slate Roofs The SlatePlate was the first product in the industry to combine two key features in conjunction with one another: no slate removal and no load transferred to the slate.



PV Slate, Infinity solar roofs & Integrated solar roofs. Established in 1994, GB-Sol is an independent UK company, manufacturing solar PV panels and mounting systems at our spacious factory on the Treforest Industrial Estate, just north of Cardiff. A spin-out from the Cardiff University solar test centre, GB-Sol has been at the forefront of





The Valsa slate roof mounting structure provides a solution for installing solar panels onto slate roofs, as part of the structure of the building to maximise the harvesting of photovoltaic power. The solution is suitable for commercial, industrial, and domestic buildings.



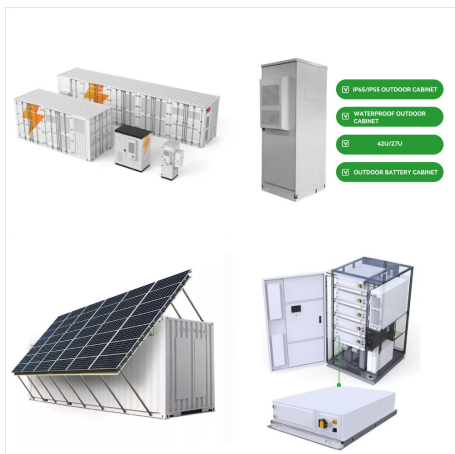
Our range of THERMOSLATE panels can be adapted to the construction systems and are completely undetectable once the installation is completed. Our most innovative systems are designed for natural slate roofs of >22° slope. Select a fixation method and discover the THERMOSLATE panel which is best suited for your needs.



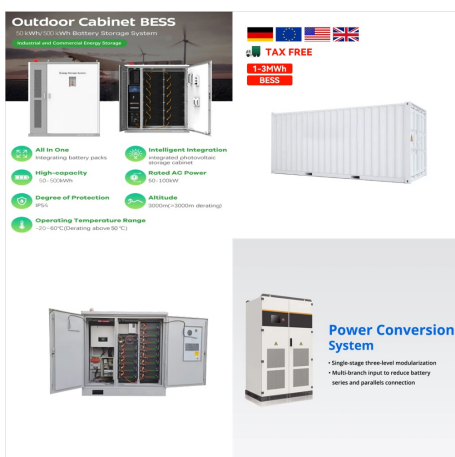
It includes: 20 x Solar Slate Plate Flashing; 20 x Adjustable Spacers; 20 x 5.5-inch Stainless Lag Bolts and 20 x Stainless Washers. Solar Slate will also recommend the appropriate sealant options. Typically, the installation of solar panels on a slate roof requires the actual removal of slates. With Solar Slate's innovative solution, that is



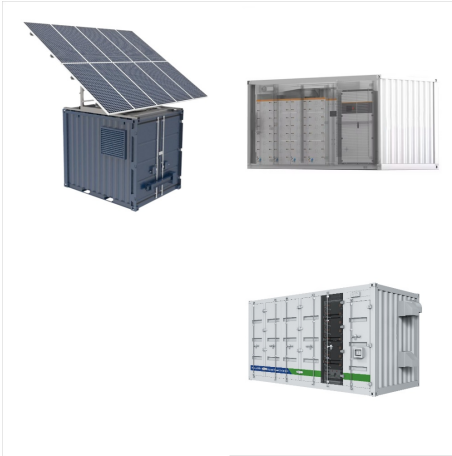
Slate; Concrete; The material type can impact the cost of your solar project. For example, installing solar panels on clay tiles may be more expensive than installing on concrete tiles. What is an ideal roof for solar panels? In most cases a composite asphalt shingle roof, facing south with enough space for placement of your entire system



For solar shingles or panels, the most important specs to watch are: Efficiency: How well a solar panel captures sunlight and converts it into electricity for your home, expressed as a percentage (i.e., 22.2%). The higher, the better. Temperature coefficient: How well your solar panels perform in less-than-ideal conditions, expressed as a percentage per degree (i.e., ???)



An in-roof installation on a slate roof using GSE Intergration mounting system. In-Roof Solar Panels. Overview: Integrated in-roof solar panels are designed to be part of your roof. They replace traditional roofing materials, effectively becoming a seamless part of the roof structure. This approach is often chosen during new builds or major



Best of all, the panels can be easily installed thanks to a "fit-and-forget" process that requires no specialized training other than traditional roofing skills. 340 panels have already been



Complete Solar Roof System - Complete Peace of Mind With Marley SolarTile (R), the integrated solar roof system has come of age to support homeowners looking to reduce the cost of running their homes.. Marley SolarTile (R) alone offers exceptional wind and fire resistance, but when combined with the complete Marley Roof System, the security of a roof that works to keep the ???



Does Installing Solar Panels On Slate Roofs Cost More Than The Standard Process? Generally, the process of installing solar panels on slate roofs might cost around 30% more than the standard one. This added cost is mainly due to the extra time it takes to carefully remove tiles and install the panels without damaging the roof ??? and the extra



Installing a solar panel system on a slate roof involves securing mounting racks on the roof structure, fitting solar panels onto the racks, and connecting cables from the panels to the inverter. The inverter converts the DC solar electricity ???



Although this comes up less in the Southern California area than installing solar on a tile roof, we are still often asked whether solar panels can be installed on a slate roof. Slate roofs can present a little more difficulty than a standard asphalt roof, but with the help of an experienced solar installer, you'll have your home creating



A standard UK 3-bedroom house with solar panels on a slate roof costs between £10,000 ??? £13,000 on average depending on the number of solar panels you have installed. This is 30% higher than the usual UK price of between £7,500 ??? £10,000 for solar panels on a standard roof of a 3-bedroom property.





With Greenstone Slate(R) you can integrate solar panels directly and flush with the slate, without sacrificing the elegance of your slate roof. 800 619 4333 sales@greenstoneslate . Facebook; an elegant solution that matches the sophistication of a slate roof. Back to Project Gallery. More about the Nu-lok Roofing System . 325 Upper Road



Yes, it is possible to put solar panels on a slate roof. However, drilling directly through the slate tiles is not recommended as Home; Home Decor; Architecture; Art and Crafts; Design Trends; Cleaning Tips; Industry News; DIY Projects; Archives. April 2024; March 2024; January 2024; Categories.



A unique inner cell solar matrix efficiently generates 20% more solar energy from the same roof area. Tempered glass is used on the rear of the removable panel which reassuringly adds much more superior strength, exceptional longevity and efficiency.. Whether you use, the traditional roof mounted panels or our seamless integrated modules, Elite Energies Solar Panels Ireland will ???



rooftop solar panel installation, solar shingles cost, solar slate plate, problems with solar panels on roof, slate solutions, solar slate roof tiles, solar slate solutions, solar panels burnished slate roof Economicas - Bangalore offer refund procedure protect himself vigorously.



Modern tiles are sleek and subtle, but more expensive than solar panels; Solar roof tiles have an efficiency rating of between 10% and 23% ; Solar panel efficiency is usually between 18% and 25%; A GB-SOL solar slate can generate 28 W of power, and has a 25-year warranty on the product, its solar performance, and its weatherproofing



Solar roof tiles are significantly more expensive than standard solar panels, typically costing about 200-400% more. For instance, while a 3.5 kilowatt peak (kWp) standard solar PV system for an average three-bedroom home might cost around ?9,000, the same size system using solar roof tiles could set you back an eye-watering ?36,000.



Installing solar panels on slate roof buildings can be a challenge, but it is possible to do so in a way that preserves the aesthetic integrity of the building. There are a number of specialized mounting systems available that are designed to minimize damage to slate tiles.