

What are plug and play solar panels?

Plug-And-Play Solar Panels. A recent example is an upcoming product that combines a solar panel, energy storage and an inverter. You can add panels to boost output and capacity. The manufacturer says owners of the system can plug it directly into an outside power socket of a house to provide electricity to a home.

Do solar panels work with indoor light?

Yes, you can use solar lights indoors if the area where the lights will be gets regular sunshine, or if the electrical light in the area is bright enough. Solar energy does have its boundaries, however, especially when used indoors.

Can solar panels be used at night?

While solar panels can still function on cloudy days, they cannot work at night. The reason for this is simple: Solar panels work because of a scientific principle called the photovoltaic effect, wherein solar cells are activated by sunlight, generating electrical current.



Place solar panels facing sun and plug the cord into 110/120V wall socket along with supplied Wi-Fi power monitor. Wait for 6 minutes for inverter to start and you will see power generating in the meter. How It Works: When the sun shines, the Solar panel set will produce DC voltage, and the micro grid tie inverter transforms the DC voltage to



More than 500,000 plug-in solar systems have been installed in Germany, most of them taking up a seamless spot on people's balconies. and now produces the most electricity from solar power



An outdoor solar plug outlet allows you to use solar power to operate outdoor equipment, lights, and electronics. These environmentally-friendly outlets convert sunlight into electricity, eliminating the need for extension cords or constantly replacing batteries. Many models are waterproof and designed to withstand various weather conditions.



Free UK Delivery* 25 Year Warranty** Plug-In Solar 440W (1 Panel) DIY Solar Power Kit with Roof Mount (For Metal/Wooden Roofs) Metal/Wood Roof Mount Kits, Plug In Solar, Self Install DIY Solar Kits. ?505.00 (ex. VAT) ?606.00 (inc. VAT) Add to Cart;



Installation time is minimal thanks to plug and play connections. These Solar Panels are warranted to retain at least 80% efficiency for up to 25-years. This kit contains 1 of our 110-Watt solar panels, a 300-Watt power inverter (Power ???)



AC solar panels (also known as AC modules), sometimes called "plug and play" modules, are solar panels that already have an integrated inverter. Manufacturers and distributors ship these solar panels with a ???



Understanding Plug and Play Solar Panels. Plug and play solar panels are a revolutionary innovation that has simplified the way we harness solar energy. Gone are the days of complex installations and expensive setups. These solar panels come pre-wired and ready to use, eliminating the need for intricate wiring and technical expertise. All you



Plug and Play Solar Panel Power with 640-Watt Solar Panels and 640-Watt Inverter; Simply Plug into Wall. 3.3 out of 5 stars. 7. \$1,295.00 \$ 1,295.00. \$199 delivery Aug 28 - 29 . Small Business. Small Business. Shop products from small business brands sold in Amazon's store. Discover more about the small businesses partnering with Amazon and



This micro inverter can handle four solar panels and plugs directly into your home. This micro inverter can handle up to four panels, totaling 1200W of solar power. Pair it with some affordable used panels, and you've got yourself a cost-effective energy solution. But is it really that simple? Let's find out.



This depends on the range and capacity of your electric car battery, as well as your home's viability for solar panels. A typical homeowner drives about 12,000 miles a year. They will need about 3,500 kWh a year to power just their vehicle, the equivalent to a 2-5 kWh solar system. This amount of power could be generated by 5-12 solar panels



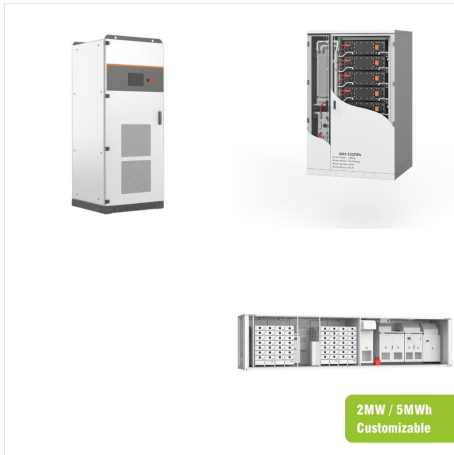
1-16 of over 1,000 results for "solar panel plug in" Results. Check each product page for other buying options. Price and other details may vary based on product size and color. Overall Pick. Amazon's Choice: Overall Pick This product is highly rated, well-priced, and available to ???



The Solar Panel requires direct sunlight to keep your device charged. But with the Quick-Release Battery Pack, your camera will have backup power in case you don't have enough sunlight. All Stick Up Cams and Spotlight Cams are available in battery, plug-in and solar power options. However, Stick Up Cam is also available with Power over



To use a solar panel with a plug, follow these simple steps: Position the solar panel: Place the solar panel in an area where it can receive direct sunlight.Ensure there are no obstructions blocking the sunlight. Connect the plug:Most solar panels designed for charging devices come with a built-in USB port or a DC plug nnect your device's charging cable to the appropriate ???



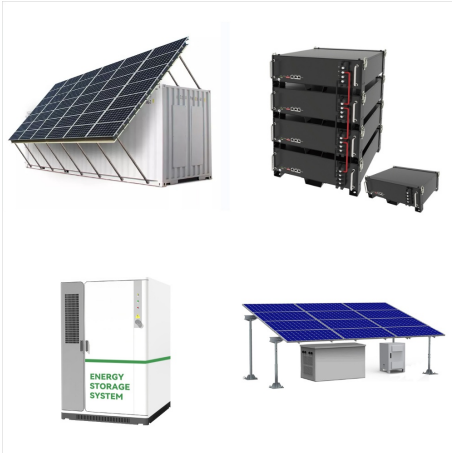
In conclusion, when deciding between a solar-powered outdoor outlet and a solar generator with outlets, several factors come into play. If you require higher power output, portability, and the ability to store energy for use during non-sunny periods, a solar generator may be the ideal choice.



Plug-in solar panels harness sunlight and convert it into usable electricity for your home. Solar panels are usually made of photovoltaic cells and semiconductor materials that absorb sunlight to generate an electric current.



Understanding Plug and Play Solar Panels. Plug and play solar panels are a revolutionary innovation that has simplified the way we harness solar energy. Gone are the days of complex installations and expensive setups. ???



Place the solar panels wherever you want. Affix the solar panels on to the racking. Connect the negative and positive ends of the solar panels to each other as per the instructions. This will create a circuit. Connect the solar panel circuit to the inverter. Plug the cord from the solar panels into the grid tie inverter, then plug the system



Connect first solar panel positive cord (red sign,+) to the second solar panel negative cord. Connect first solar panel negative cord to the micro-inverter and second solar panel positive cord (red,+) to the inverter. 2. Put the Solar Panel facing the Sun and Plug the cord into your 110/120V wall socket along with supplied Power Monitor.



The cons of plug-in solar panels. If you're thinking about getting a plug-in solar panel, you want to know if you can plug it into an outlet. You might be able to, but there are some things you should consider before making that decision. Let's ???



This is why "plug-in" solar panels, which claim to pipe the energy pulled from sunlight into a personal electrical grid via a regular plug and wall outlet, have become a somewhat common



Additionally, the 3 recharging options provided flexibility in charging the power station, whether it be through a wall outlet, car cigar lighter, or the included solar panel. Types of Plug-in Solar Panels
Roof-mounted panels. Roof-mounted plug-in solar panels are a popular choice for homeowners who have limited space on their property.



You cannot simply plug a solar panel into an outlet in your home and use the panel to power the circuit the outlet is connected to. The power supplied by the panel or panel array is too erratic to supply steady power to the circuit. This can damage devices connected to the circuit and even pose a fire risk.



Nature Power Solar Panels take the sun's energy and turns it into electric current. These solar panels are high efficiency 12-Volt solar panels featuring sturdy aluminum frames and high transparency tempered glass tops. They have a scratch resistant and anti-reflective coating to help keep the solar panel in good shape for many years.



How plug-in solar panels work. The main draws to plug-in solar panels are that they are simple to understand, and they're cheap. Plug-in solar panels (also called "plug and play solar panels") are typically offered in pairs and can be wired together into arrays that range from those two base panels (about 640 watts) all the way up to as many sets as you want.



The cons of plug-in solar panels. If you're thinking about getting a plug-in solar panel, you want to know if you can plug it into an outlet. You might be able to, but there are some things you should consider before making that decision. Let's start with the cons of using a plug-in solar panel: Safety concerns