

What is the geology of South Georgia and the South Sandwich Islands?

The geology of South Georgia and the South Sandwich Islands is part of the largely submerged Scotia Ridge. The island of South Georgia is unusual among oceanic islands for having pre-Cretaceous sedimentary rocks underlying much of the island and a significant portion of felsic igneous rocks.

What is the ccTLD for South Georgia and the South Sandwich Islands?

The Internet country code top-level domain (ccTLD) for South Georgia and the South Sandwich Islands is .gs. The parts of the islands that are not permanently covered in snow or ice are part of the Scotia Sea Islands tundra ecoregion.

What is the difference between South Georgia and South Sandwich Islands?

In contrast to South Georgia, the South Sandwich Islands are rarely visited, and information on the terrestrial and marine flora and fauna is sparse. The archipelago is the only arc of active volcanoes in the Southern Ocean and its waters probably contain unique deep-sea hydrothermal vent ecosystems and seamounts.

Is the Scotia Plate submerged?

The Scotia Plate is mainly submerged, with exceptions such as the southern tip of South America (Isla de los Estados near Tierra del Fuego) and the South Georgia Islands on its northeastern edge, revealing the exposed elements of the oceanic ridge known as the Scotia Arc.

Is South Georgia igneous or pre-Cretaceous?

The island of South Georgia is unusual among oceanic islands for having pre-Cretaceous sedimentary rocks underlying much of the island and a significant portion of felsic igneous rocks. Two-thirds of the island consists of intensely folded flysch, capped with Aptian age fossils, tuff and greywacke in the Cumberland Bay Series.

What is happening in South Georgia & the South Sandwich Islands?

There are also a series of no-take zones around the islands, and the closure of the krill fishery November to

SOLAR PLATE RATE IN SOUTH GEORGIA AND SOUTH SANDWICH ISLANDS



March, when krill-eating birds and marine mammals are breeding. In 2018 the Government of South Georgia & the South Sandwich Islands (GSGSSI) announced further protections:



South Georgia and the South Sandwich Islands are a collection of exceptionally remote islands in the Southern Atlantic. Although considered as one entity they represent two physically distinct island groups, with the South Georgia cluster ranging between 560 and 800km west of the South Sandwich Island arc (Figure 1).



The South Georgia Geographic Information System (SGGIS) enables researchers and the public to access spatially explicit information about the islands' environmental landscape. The ???

SOLAR PLATE RATE IN SOUTH GEORGIA AND SOUTH SANDWICH ISLANDS



The geology of South Georgia and the South Sandwich Islands is part of the largely submerged Scotia Ridge. The island of South Georgia is unusual among oceanic islands for having pre-Cretaceous sedimentary rocks underlying much of the island and a significant portion of felsic igneous rocks. Two-thirds of the island consists of intensely folded flysch, capped with Aptian age fossils, tuff and greywacke in the Cumberland Bay Series. The series includes slate, phyllite, congl???



The Sandwich Plate is known as one of the tectonically most active regions in the Southern Ocean and Antarctica, characterised by a subsurface chain of active volcanic islands (the South Sandwich



South Georgia and the South Sandwich Islands are a collection of islands in the South Atlantic Ocean. Most of the islands, rising steeply from the sea, are rugged and mountainous. At higher elevations, the islands are permanently covered ???

SOLAR PLATE RATE IN SOUTH GEORGIA AND SOUTH SANDWICH ISLANDS



The South American Plate converges with the Sandwich Plate, on which the South Sandwich Islands are situated, and the former is being subducted at the South Sandwich Trench at a rate of 70-85 mm year⁻¹ (Figure 1). The plate melting associated with the

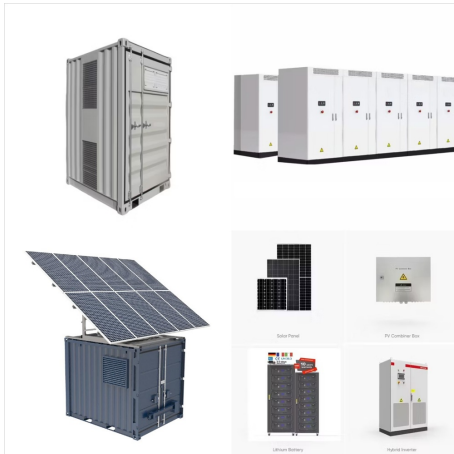


South Georgia and the South Sandwich Islands (SGSSI) are surrounded by oceans that are species-rich, have high levels of biodiversity, important endemism and which also support large aggregations of charismatic upper trophic level species.



We give information about South Georgia and the South Sandwich Islands in two main ways. Although there is some overlap, they are largely complementary. The virtual tour (opens in a new window) uses a set of standard headings for each

SOLAR PLATE RATE IN SOUTH GEORGIA AND SOUTH SANDWICH ISLANDS



We give information about South Georgia and the South Sandwich Islands in two main ways. Although there is some overlap, they are largely complementary. The virtual tour (opens in a new window) uses a set of standard headings for each territory and, within these headings, presents what is essentially an illustrated slide-show, which can be



The Sandwich Plate is known as one of the tectonically most active regions in the Southern Ocean and Antarctica, characterised by a subsurface chain of active volcanic islands (the ???)



The Scotia Plate and the South Sandwich Plate play crucial roles in shaping the tectonic landscape of the southernmost reaches of the South Atlantic Ocean and the Southern Ocean surrounding Antarctica. These plates ???

SOLAR PLATE RATE IN SOUTH GEORGIA AND SOUTH SANDWICH ISLANDS



The South Georgia Geographic Information System (SGGIS) enables researchers and the public to access spatially explicit information about the islands' environmental landscape. The Government of South Georgia & the South ???



South Georgia and the South Sandwich Islands are a collection of exceptionally remote islands in the Southern Atlantic. Although considered as one entity they represent two physically distinct island groups, with the South Georgia cluster ranging between 560 and 800km west of the ???



The geology of South Georgia and the South Sandwich Islands is part of the largely submerged Scotia Ridge. The island of South Georgia is unusual among oceanic islands for having pre-Cretaceous sedimentary rocks underlying much of the island and a ???

SOLAR PLATE RATE IN SOUTH GEORGIA AND SOUTH SANDWICH ISLANDS



South Georgia and the South Sandwich Islands are a collection of islands in the South Atlantic Ocean. Most of the islands, rising steeply from the sea, are rugged and mountainous. At higher elevations, the islands are permanently covered with ice and snow.



The Scotia Plate and the South Sandwich Plate play crucial roles in shaping the tectonic landscape of the southernmost reaches of the South Atlantic Ocean and the Southern Ocean surrounding Antarctica. These plates are integral components of the intricate tectonic puzzle that governs the dynamics of the Earth's lithosphere in the Southern



The Sandwich Plate is known as one of the tectonically most active regions in the Southern Ocean and Antarctica, characterised by a subsurface chain of active volcanic islands (the South Sandwich

SOLAR PLATE RATE IN SOUTH GEORGIA AND SOUTH SANDWICH ISLANDS



The South Georgia Geographic Information System (SGGIS) enables researchers and the public to access spatially explicit information about the islands' environmental landscape. The Government of South Georgia & the South Sandwich Islands commissioned GIS developers at British Antarctic Survey (BAS) to create the SGGIS.