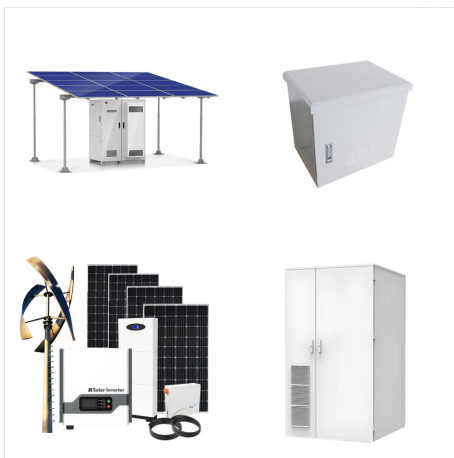




A Solar Panel Kit is a pre-designed off-grid solar system that consists of necessary parts, devices and mounting brackets, like battery, charge controller, inverter and wires. It makes installation easy, and helps users avoid ???



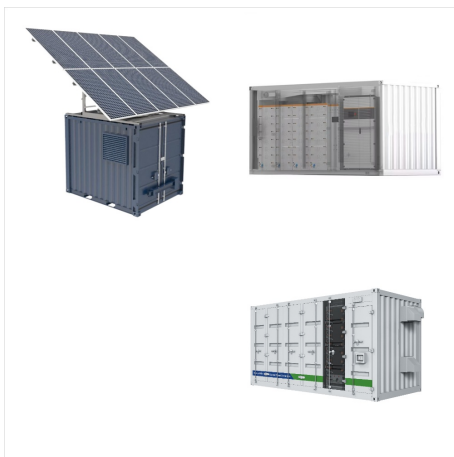
This article explores the components of a solar energy system, highlighting the importance of solar panels, inverters, batteries, and charge controllers. A visualization diagram of a solar energy system further aids in ???



In this beginner's guide to home solar systems, Qcells covers the basics of a system, the overall benefits of solar energy, different system types, the installation process, and more. Read on to discover everything you should ???



If you lease a solar energy system, you are able to use the power it produces, but someone else???a third party???owns the PV system equipment. The consumer then pays to lease the equipment. Solar leases often involve limited upfront investment and fixed monthly payments over a set period of time.



Below is how the PowerHouse Systems should be wired. Follow the diagrams and use proper wire and size to run the system. If you are extending the output leads of the run & guns you have to use 10awg. Input wires should never be extended but close to 12v cranking battery to provide good voltage to chargers. Failure



A home solar system, also known as residential solar, is a system that converts sunlight into usable energy for residential properties. It comprises solar panels, inverter(s), and a battery (optional) and is also connected to the ???



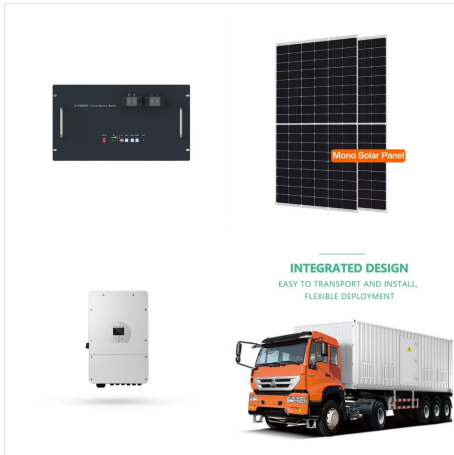
With any solar panel installation, especially for a home, you need a few solar panels to power your house, depending on your power requirements. Remember that solar panels only produce Direct Current or DC, and most homes run on 110V or 240V Alternating Current (AC).



A solar panel grounding diagram typically includes key elements such as the solar panels themselves, the mounting structure, the inverter, and the grounding electrode. These elements are interconnected through various grounding conductors, such as copper or aluminum wires. The diagram also illustrates the proper bonding of different metal



A solar panel wiring diagram (also known as a solar panel schematic) is a technical sketch detailing what equipment you need for a solar system as well as how everything should connect together. There's no such ???



Basic solar wiring diagram. This solar system wiring diagram depicts an off-grid scenario where the solar panels are series wired. Grid-tied solar systems don't need batteries and therefore, don't need charge controllers, which monitor the current. The purpose of the charge controller is to ensure the batteries don't over charge.



What is Solar Power Plant? The solar power plant is also known as the Photovoltaic (PV) power plant. It is a large-scale PV plant designed to produce bulk electrical power from solar radiation. The solar power plant uses solar ???



A solar one line diagram (also known as a single line diagram) is an electrical drawing used to design a solar PV installation. A one-page document, it details the main components within the system and uses single lines to show how they are connected. The diagram also includes a summary of the wiring and electrical calculations.



A home solar system, also known as residential solar, is a system that converts sunlight into usable energy for residential properties. It comprises solar panels, inverter(s), and a battery (optional) and is also connected to the main power grid. Solar panels are the heart of a home solar system and function by absorbing available sunlight.



Below is a combination of multiple calculators that consider these variables and allow you to size the essential components for your off-grid solar system: The solar array. The battery bank. The solar charge controller. The power inverter. Simply follow the steps and instructions provided below.



A Solar Panel Kit is a pre-designed off-grid solar system that consists of necessary parts, devices and mounting brackets, like battery, charge controller, inverter and wires. It makes installation easy, and helps users avoid guesswork to save time and cost. ECO-WORTHY carries multiple different solar panel kits that c





A solar panel system schematic diagram is a visual representation of how the different components of a solar panel system are connected to each other. It shows how solar panels, inverters, batteries, and other components work ???



A solar panel system is made up of three basic parts: solar panels, an inverter and a solar gateway. Solar panels capture the sunlight hitting your roof and convert it into electricity. A solar inverter connected to your solar panels converts this electricity into the clean energy that can power the lights and appliances in your home.



Solar energy has become increasingly popular for homes and businesses in Australia, offering a clean and sustainable alternative to traditional electricity sources. But how exactly does solar power work using a solar energy diagram? Is solar energy suitable for your home and business? Solar energy has numerous advantages that are worth investigating. Investing in solar [???



What is Solar Energy? Solar energy is a renewable and sustainable form of power derived from the radiant energy of the sun. This energy is harnessed through various technologies, primarily through photovoltaic cells and solar thermal systems. Photovoltaic cells commonly known as solar panels, convert sunlight directly into electricity by utilizing the ???



+ solar power house stock photos and images available, or search for solar power house diagram to find more great stock photos and pictures. solar power house diagram; Sort by: Most popular. Solar photovoltaic panels on a house roof. Sunset. Modern house with solar panels. Night view of a beautiful white house with solar panels



Understanding The Solar Inverter's Wiring Diagram. Before you start with the actual installation, it's important to have a clear understanding of the wiring diagram of your solar inverter. This diagram provides a visual representation of how the various components should be connected. Make sure to study the diagram carefully to avoid any



Type of solar panel diagram required. I will explain the types of solar panel diagrams. 1. Elevation. This is a solar panel diagram of the building viewed from four directions (north, south, east, and west). You can find the roofing material's type, shape, dimensions, slope, direction, etc. However, there are cases where the dimensions are



??? Powerhouse. hydroelectric power plant diagram. Water reservoir: In a reservoir the water collected from the catchment area during the rainy season is stored behind a dam. Catchment area gets its water from rains and streams. Continuous availability of water is a basic necessity for a hydroelectric power plant.



Now, before we dive into the on-grid solar system wiring diagram, it's worth exploring why you'd consider connecting your solar panels to the grid in the first place. The obvious advantage is the constant availability of power. However, in many areas, you can sell any excess power your solar panels generate back to the utility company

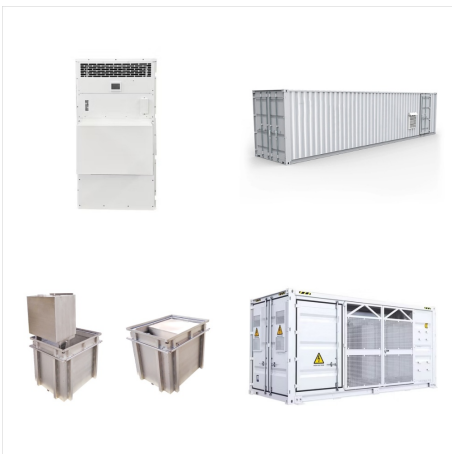




A solar panel wiring diagram (also known as a solar panel schematic) is a technical sketch detailing what equipment you need for a solar system as well as how everything should connect together. There's no such thing as a single correct diagram ??? several wiring configurations can produce the same result.



A solar panel might seem unassuming, but when we examine a solar panel diagram, we learn how complex this piece of tech really is. The n-layer and p-layer are the powerhouse of solar cells ??? it is where electricity is ???



solar energy sales engineering explaining the benefits and functionality a solar panel to asian couple at home,sustainable living,energy efficiency, eco-friendly technology,renewable energy solutions - solar power house diagram stock pictures, royalty-free photos & images



solar power house photos and images available, or search for solar power house diagram to find more great photos and pictures. energy efficient house with solar panels and wall battery for energy storage - solar power house stock pictures, royalty-free photos & images.



It shows how solar panels, inverters, batteries, and other components work together to generate and store solar energy. The schematic diagram typically starts with the solar panels, which are the main source of the system's power. The panels convert sunlight into electricity through the use of photovoltaic cells.



Learn how to connect solar panels to your house's wiring in the UK and start harnessing the power of the sun in an eco-friendly and cost-effective way. Discover the step-by-step process, from choosing the right equipment to ensuring proper installation and integration into your home's existing electrical system. Maximize the benefits of solar energy and reduce your reliance on ???