

Can solar shingles be used with a new roof?

Solar shingles can be integrated with your existing roof or used in place of a new roof, so they blend in more seamlessly with your home. Solar shingles are significantly smaller than standard solar panels. Since they're meant to cover or replace traditional asphalt shingles, they're usually 12 inches wide by 86 inches long.

Why are solar shingles so popular?

They became more popular when Tesla debuted its solar roof in 2016. Since then, more solar panel companies and installers have begun offering solar shingles for residential installations. From a distance, solar shingles resemble standard asphalt roof shingles but they contain thin layers of photovoltaic (PV) sheets protected by tempered glass.

What are solar shingles & roof tiles?

Solar shingles and roof tiles are intended to replace normal roofing materials with roof shingles that generate electricity. They still function as roofing materials, being fire resistant and providing protection during storms. They cost more compared to traditional solar panels, but provide the same power output.

How do Solar shingles work?

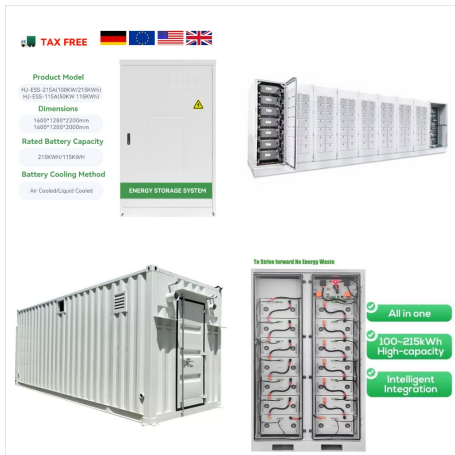
Solar shingles or tiles perform as roofing material for your home. The main idea is to combine the solar cells with the roof sheathing rather than mounting solar modules on top of the shingles. Solar shingle's basic principle works just the same as with conventional solar panels.

What is a solar shingle?

A solar shingle is meant to provide homeowners with an affordable, aesthetically pleasing solar energy panel that doubles as a weatherproof, protective roof shingle. Solar shingles are functionally similar to solar panels, with the primary goal of converting sunlight into electricity.

Which solar shingles are best?

Founded in 2019 in California, GAF Energy is best known for its Timberline Solar Shingles. These are cutting-edge, nailable solar shingles that are seamlessly integrated with roof installation, which reduces the risk of leaks, creates solar power and looks sleek.



What are the disadvantages of solar roof shingles?

Solar shingles do have a few drawbacks: Solar shingle roof cost: The total costs of installing solar roof tiles are about three times the cost of conventional roofing materials and most brands of solar shingles cost more than the average cost of solar panels in the U.S.



The NEW Timberline Solar??? roofing system from GAF Energy is based on innovations so advanced they make solar roofing simple. The solar shingles generate energy. And they go on like architectural shingles so you get powerful, reliable energy from a beautiful, cost-effective roof.



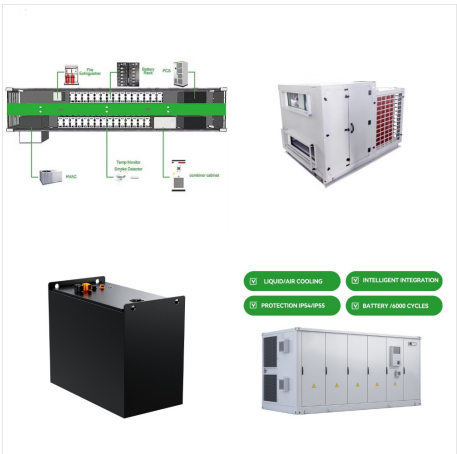
The Solar Roof is a premium building-integrated photovoltaic (BIPV) product that takes the functionality of solar panels and integrates it into roof shingles. Without Tesla's data, we estimate that typical solar shingle brands range from 14-18% efficiency. Comparatively, most solar panels are 22-23% efficient.



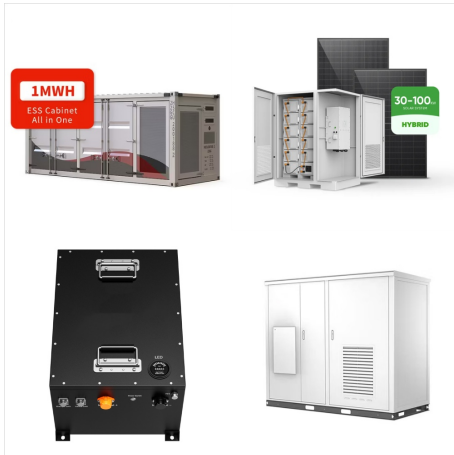
Timberline Solar has the lowest wattage per shingle that we've seen (45 watts). The typical wattage of a solar shingle is around 70 watts and the average wattage of a solar panel is between 250



Solar roof shingles combine traditional roofing materials' functionality and solar panels' energy-generating capabilities. Solar Shingles vs. Solar Panels: Key Differences While solar shingles and solar panels work the same way, they have several important differences, which can impact which solution is best for your home.



, ,?the company?,? has been holding a simple objective to offer customers innovative solar solutions. PV Tech invested?,? in research and development in solar PV application on roofing material aiming ?,?to provide highly efficient, reliable and cost effective solar shingle roofing product to home owners.



Solar roof shingles & tiles vs. solar panels. There are some key considerations when comparing solar roof shingles and tiles with solar panels. Availability. Because there has not been significant adoption of solar shingles or solar tiles in the United States, it is difficult to find solar shingles that work for residential installs. Many solar



Residential Solar Roof Shingles vs. Solar Panels. The difference between solar shingles and solar panels is the way they are installed. Solar shingles act as a structural roof that achieves two functions: to generate clean energy and to provide a uniform look across the whole roof. Solar panels, on the other other hand, are simply solar modules



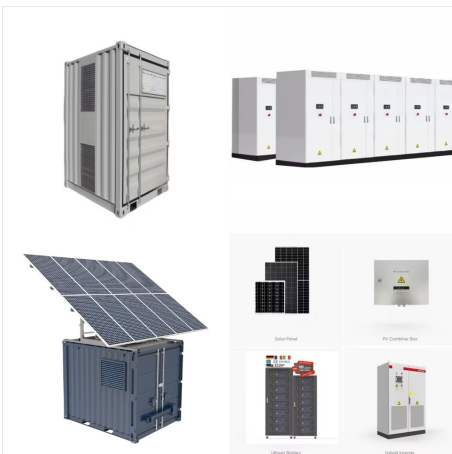
We developed the first fully-integrated solar roofing system in North America, perhaps the world. We are also the only upgradeable solar shingle system. Luma Solar brings clean energy to customers who want beauty and quality craftsmanship. Our award winning and patented systems are designed to enhance your property - not detract from it



"Solar roof shingles are a newer technology compared to traditional solar panels and therefore are less likely to have a line of professional installation contractors to install them on your



In other words, shingled solar panels are attached to the roof using the structural support from the existing roof to place the shingle solar cells (just like traditional modules) while the solar shingles replace your roof itself. Shingled solar panels vs. conventional panels: A comprehensive comparison



Solar roof shingles are considerably smaller than traditional solar panels. Typically, a solar shingle measures about 12 inches wide by 86 inches long, tailored to blend with standard roofing materials. In contrast, a typical solar panel is much larger, around 39 inches wide by 65 inches long, designed for optimal energy capture.



That means you can expect a bigger ROI for installing solar roof shingles over solar panels. According to Remodeling Costs, BIPV solar shingles produce an ROI between 50% and 80% depending on style and type of installation. 4 For a \$30,000 solar roof installation, you'd be looking at a home value increase of between \$15,000 and \$24,000. Or if



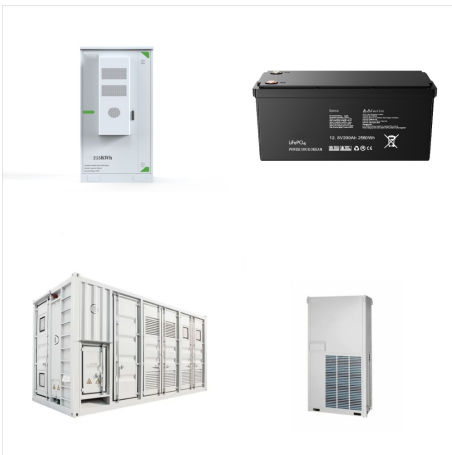
That is why the installation of solar panels is the most common way to take advantage of the sun's energy, however, there is a more innovative technology that is starting to deploy in the industry, we are talking about solar roof shingles. This article will explain everything related to solar shingles so that you stay up-to-date to the most



Powered by Sunlight. When sunlight hits the photovoltaic (PV) tiles in your Solar Roof, it is absorbed by solar cells, creating a flow of electric current. This direct current (DC) energy is then sent to your solar inverter, which converts it to the alternating current (AC) energy that can power your home. An End-to-End Solar System



Switching from solar panels to PV roof shingles is demanding and expensive. After taking down the solar panels, you need a professional installer or roofer to remove your current tiles and install the shingles one at a time. The process includes making the connections between tiles and connecting the entire array to your balance of system.



When assessing performance, a solar shingle's total power output or wattage and its efficiency are both important. Each type of solar shingle varies so much in size that the best indicator of performance is power output per square foot of exposed shingle. CertainTeed's Solstice shingle tops the list at 16.1 W/sq. ft., while SunTegra's Solar



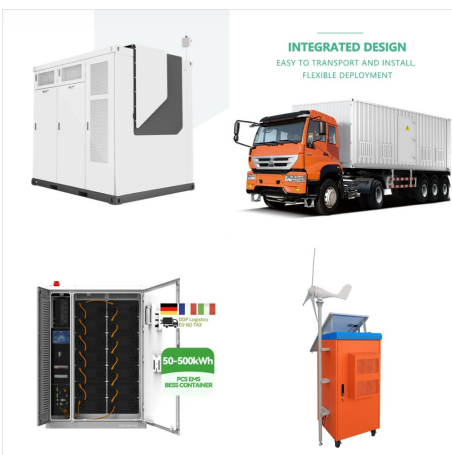
A single GAF solar shingle measures 3.15 square feet and has a power rating of 45 watts, meaning a 6-kW GAF Timberline installation would cover 420 square feet, compared to about 310 square feet for standard 410-watt (21.12 square feet) solar panels.



According to Modernize, the average cost of solar shingles is between \$63,000 and \$75,000, which is higher than the average cost of standard solar panels. Based on Lawrence Berkeley National Laboratory data, U.S. solar panels cost \$31,558 on average. Brands like Tesla tend to be more expensive; however, they serve a double purpose as a roof and solar system.



Tesla Solar Roof. Solar shingles, also called photovoltaic shingles, are solar panels designed to look like and function as conventional roofing materials, such as asphalt shingle or slate, while also producing electricity. Solar shingles are a type of solar energy solution known as building-integrated photovoltaics (BIPV).. There are several varieties of solar shingles, including shingle



Future of Solar Roof Shingles. The market for solar shingles is growing as more homeowners seek aesthetically pleasing renewable energy solutions. Innovations in technology continue to improve efficiency and reduce the cost of solar shingles, making them increasingly competitive with traditional solar panels.



A solar roof is essentially a roof made up of mini solar panels that look and function like traditional roof shingles. So when you order a Tesla Solar Roof, you aren't getting regular solar panels



SunStyle(R) is a structural roof and solar module combined, providing a durable, leak-proof roofing solution that is both beautiful and protective. Solar shingles are more durable than most standard roofing materials, even in harsh weather conditions like hail, snow, rain and high wind.



It features sleek, low-profile solar panels that are integrated directly into the shingles, creating a seamless and uniform look. This unique design eliminates the need for bulky and obtrusive solar panels, preserving the curb appeal of your home. One of the key features of the Solstice Shingle is its high energy efficiency.



Solar roof shingles often blend in well with darker roof colors, but the black color will stand out on lighter roofs. The ability to blend in with your roof is the main advantage of choosing solar roof shingles over traditional solar panels. Many manufacturers offer a variety of colors and styles to choose from, so you'll likely be able to