

What is a solar pump inverter?

Solar pump systems use solar energy to power water pumps, which can be used for irrigation, water supply, and other applications. Solar pump inverters are a key component of solar pump systems, converting the direct current (DC) output of the solar panels into alternating current (AC) that can be used to power the water pump.

How to choose a solar pump inverter?

The solar panel configuration is also an important factor to consider when selecting a solar pump inverter. The total solar panel power should be greater than or equal to 1.3 times the pump power, and less than or equal to 2 times the pump power.

How much power does a solar pump inverter have?

1.5kW solar pump inverter for sale, with AC 3.8A output current at 3-phase, 380V, DC voltage range (280V, 750V), and recommended DC MPPT range (350V, 750V). With IP20 protection class, the solar pump inverter works at (-10°C, 40°C). The solar pump inverter supports AC and DC input, the power factor is  $>0.99$ , and the humidity is less than 95%RH.

What is a MPPT solar pump inverter?

MPPT solar pump inverters (also referred to as solar VFD or variable frequency drive) transform the direct current generated from a photovoltaic array into alternating current and drive various AC motor water pumps such as centrifugal pumps, irrigation pumps, and deep well pumps.

What is a variable frequency solar pump inverter?

The Variable Frequency Solar Pump Inverter is an advanced system that allows PV power to be directly used to drive water pumps without the use of battery modules. Not only does this save costs on utilities, but it also helps protect the environment by using clean energy sources. This technology offers both cost savings and environmental benefits.

Do you need a solar water pump inverter?

Solar water pump applications range from irrigation and drainage to swimming pool pumps. To run these

# SOLAR PUMPING INVERTER SINGLE PHASE



systems properly, an inverter that matches the output of your solar panels must be used. Solar pump inverters are an efficient and eco-friendly way to save energy costs.



2.2kW Single Phase INVT Solar Water Pump Inverter ???????? Technical Specifications ??? ?,?.  
Manufacturer: INVT ???- Series: GD 10 ????  
Model: GD10-2R2G-S2-B ???? Application: Pumps / Fans / General Purpose ???? Capacity: 2.2 kW  
??? Current: 11 A ???? Main Power Supply: 220 V  
???? Phase: Single-phase ??? Output Frequency: 0-400 Hz ???? Enclosure: IP20 ???? Overload Capacity: 150% per 1 min ????,?



The 1.5 KW Single Phase Hober Hybrid Water Pumping Inverter is designed for efficient and reliable water pumping operations. With a continuous power output of 1.5 kW, this hybrid inverter supports both grid-tie and off-grid modes, making it versatile for various power sources. It features high efficiency, typically above 90%, and includes integrated controls for managing water ???



Your Reliable Solar Pump Inverter Provider With 15 years at the forefront, we're the global leaders in hybrid Solar Water Pump Inverter production. Our inverters are known for advanced tech and lasting durability. They convert DC to AC, driving AC water pumps. If it is a single phase pump, the output must be displayed as AC Out 1Ph FWD. If

# SOLAR PUMPING INVERTER SINGLE PHASE



The solar panel configuration is also an important factor to consider when selecting a solar pump inverter. The total solar panel power should be greater than or equal to 1.3 times the pump power, and less than or equal to 2 times the pump power.



Veichi 18KW Hybrid Solar Water Pumping Inverter System Converts Solar Energy Directly Into Electric Energy, And then Drives Motor To Drive Water Pumps To Pump Water From Deep Wells, Rivers, Lakes, And Other Water Sources. Single Phase Power Solar Water Pumping Containerized Series. Buy Solar Inverters at SolarShop at the Best Price in

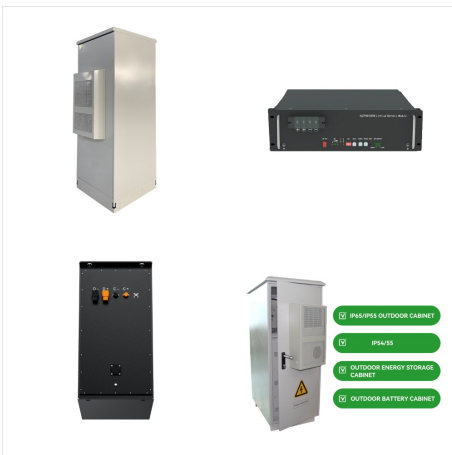


The Hober 1.5Kw Solar Pumping inverter main functions include converting the DC power into Ac Power to drive the pump, and real-time adjust the output frequency to achieve the maximum power point tracking. The inverter is appropriate for single-phase pumps with power requirements below 1500Watts.

# SOLAR PUMPING INVERTER SINGLE PHASE



The Hober 18.5 Kilowatts Three Phase Hybrid MPPT Solar Water Pumping inverter main functions include converting the DC power into Ac Power to drive the pump, and real-time adjust the output frequency to achieve the maximum power point tracking. The inverter is appropriate for three-phase pumps with power requirements below 15000 Watts. Output 380V Three Phase ???



Solar pump inverter adopts advanced MPPT control technology, real-time detection of solar panels power voltage, tracking the highest voltage and current, efficiency is as high as 98%. input voltage single phase AC 220V±15%, input frequency 47~63Hz. With a start frequency of 0.4Hz~20.00Hz, the inverter's speed adjustment range reaches 1:50



Single-phase solar pump inverters utilize advanced power electronics to convert the DC produced by solar panels into single-phase AC power. This is achieved through a series of electronic switches, capacitors, and inductors that regulate the voltage and frequency of the output waveform. By matching the inverter's output to the specific



# SOLAR PUMPING INVERTER

## SINGLE PHASE



4kW Single Phase INVT Solar Water Pump Inverter  
????????? Technical Specification ??? ?,?.

Manufacturer: INVT ???- Series: GD18 ??? Model:  
GD18-004-4-2 ??? Application: General Purpose  
??? Capacity: 4 kW ??? Current: 9.5 A ??? Main  
Power Supply: 220 V ??? Phase: Single Phase  
??? Output Frequency: 0-400 Hz ??? Enclosure:  
IP20 ?????,? Overload Capacity: 150% for 1 minute  
????,?



FlinFlow solar pump inverter is an economical  
solution to run a regular single phase and three  
phase AC water pump on solar power without using  
batteries and grid power. It is easy to install, highly  
efficient and has a slick design. Built-in MPPT solar  
charge controller ensures maximum solar power is  
generated and in turn allows you to save



Output voltage for single phase model 2.2k LS is  
based on 220-240V (Single Phase or 3-Phase  
motors), and for 3-phase models are 380, 400, 415  
or 440VAC, (3-Phase motors only). Battery-less  
design solar pump inverter (run from Solar or AC  
directly) Built in MPPT algorithm; High PV input volt  
up to 450V (Voc) for LS model / 800V (Voc) for 3

# SOLAR PUMPING INVERTER SINGLE PHASE



Dive into the essentials of selecting a 3-phase solar pump inverter with this guide, highlighting the different types, key applications, and critical selection considerations. Uncover how these devices efficiently transform solar energy into a reliable power source for water pumps, facilitating sustainable operations in agriculture, residential setups, and beyond.



kW Single-Phase Solar Pump Kit includes: 1 x Microcare VSD Solar Pump Inverter. With its variable speed control and flow switch input, the Microcare Solar Pump Controller/Inverter offers a true Solar Pump Inverter capable of producing high efficiency levels. The unique built-in overdrive feature allows for easy PV



How to Choose the Right Single-Phase Solar Pump Inverter Based on Your Requirements. In areas with limited access to the electrical grid, single-phase solar pump inverters offer a reliable and environmentally friendly solution for pumping water from wells, rivers, or reservoirs.

# SOLAR PUMPING INVERTER SINGLE PHASE



A solar pump inverter converts DC from solar panels into AC to power water pumps, enabling efficient and clean solar water pumping systems. For single-phase inverters, the solar panel Voc should not go over 450 volts. Also, the Vmp should at least be 300 volts. For three-phase inverters, the Voc can't exceed 800 volts, and the Vmp has to



The Solartech PB3700H-G2 3.7 kW Solar Pump Inverter is compatible with submersible pumps, surface pumps, and swimming pool pumps using 3-phase induction motors. These pumping inverters convert PV array power direct to AC power. The MPP-tracker adjusts the output frequency according to the radiations. BUY SOLARTECH PB3700H-G2 3.7 KW SOLAR ???



The choice between a 3-phase or single-phase solar pump inverter depends on the specific application requirements. For larger-scale applications with higher power demands, 3-phase inverters offer advantages in terms of power output, efficiency, starting torque, and power factor. However, for smaller applications, single-phase inverters provide

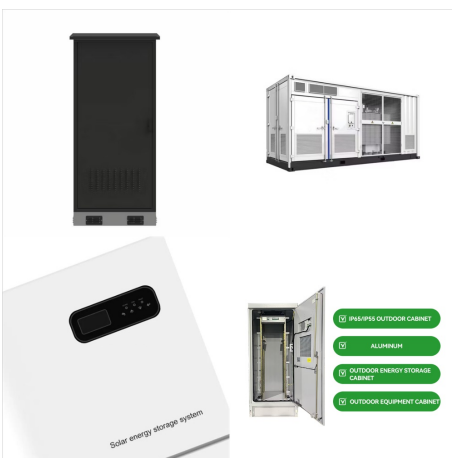
# SOLAR PUMPING INVERTER SINGLE PHASE



??? Single-phase pump: easy to get electricity, home use. One Key to Clean the Solar Pump. VEICHI solar water pump inverter is a high-efficiency solar water pump controller which can make full use of solar energy to drive water pumps for agricultural irrigation, water supply system, fountains, groundwater lowering and etc.



Because the general solar inverter need high DC input voltage. \* Support single phase pump. For the civil water pump, many motors are single-phase, but the solar inverter in the market don't support single phase, only support 3-phase. \* Support AC/DC channel input together. In the night, there isn't PV input energy, the pump will stop.



Integrating single-phase solar pump inverters into your existing system empowers you with an efficient and sustainable solution for water pumping. By harnessing the sun's energy, you can optimize your irrigation practices, reduce costs, and contribute to a greener future. Explore the possibilities today and unlock the transformative power of



# SOLAR PUMPING INVERTER SINGLE PHASE



Single-Phase Solar Pump Inverter on 3-Phase Supply. While it is possible to use a single-phase solar pump inverter on a 3-phase supply, it is not recommended due to efficiency losses and potential complications. It is generally better to match the inverter phase type to the supply phase type. 11kW 3-Phase Solar Pump System: An Overview



The SI23 solar pump inverter has a simple and elegant appearance, and the book-type structure design saves installation space. Smart IOT brings smart irrigation. 1. The new book-style narrow structure design greatly saves installation space. Be the first to review "4kW Veichi Hybrid Pump Inverter, Single Phase, 150-450VDC, 220-240VAC



VFD solar inverter also named mppt solar VFD inverter, solar VFD drive, solar water pump controller, or solar pump inverter is MPPT VFD(Variable Frequency Drive) that converts dc from solar panels to AC for ac solar pumping system.. VOK200 series solar pump drive adapts the latest MPPT efficient technology, TOP quality materials, and strict quality control, widely using ???

# SOLAR PUMPING INVERTER SINGLE PHASE



Support single phase/three phase 220V, and three phase 380V solar water pump inverter, Power from 0.4kW to 110KW. Easy to use simply connect the photovoltaic panel to the inverter, no need to set any parameters. Multiple protection measures. Advanced MPPT algorithm ensure solar power tracking efficiency can reach 99%



???? Hober 2.2Kw Solar Pumping Inverter Single Phase. Specifications: AC Pump: 220V 2.2KW; Hybrid Solar Pump Inverter Model: HSPH2200L 220V 2.2KW; Solar Panels: 330w \* 14pcs in series; Hybrid Solar Pump Inverter Uses: ???? Residential potable water supply; ???? Agricultural irrigation;