



Currency guide to South Georgia and South Sandwich Islands and British pound (GBP) rates and money saving tips - Travel Money & Transfers. USD/GBP 0.7877 : +0.1% 14d-lows BER is operated by Best Exchange Rates Pty Ltd, a company incorporated under the laws of Australia with company number ABN 68082714841.



South Georgia and The South Sandwich Islands : Stamps : Years List : Colnect. Buy, sell, trade and exchange collectibles easily with Colnect collectors community. Only Colnect automatically matches collectibles you want with collectables collectors offer for sale or swap. Colnect collectors club revolutionizes your collecting experience!



Closeup map of the South Sandwich Islands NASA satellite photograph of Montagu Island. The South Sandwich Islands comprise 11 mostly volcanic islands (excluding tiny satellite islands and offshore rocks), with some active volcanoes. They form an island arc running north-south in the region 56°18'N-59°27'S, 26°23'W-28°08'W, between about 350 and 500 mi (300 and 430 nmi; ???

SOLAR START LTD SOUTH GEORGIA AND SOUTH SANDWICH ISLANDS



Frequently asked questions. Want to know about travelling to South Georgia and the South Sandwich Islands? We have put together a list of the most frequently asked questions from our users such as: What is the cheapest mode of transport?, What is the quickest option?, How much do tickets usually cost? and many more.



South Georgia & the South Sandwich Islands is at the northern limit of the krill distribution. Krill at South Georgia & the South Sandwich Islands are not self-sustaining but dependent on the northerly movement of krill in the currents of the Southern Ocean from their spawning grounds under the ice in the Antarctic Peninsula and Weddell Sea.



The Antarctic Treaty of 1962 resulted in a separation of the British Antarctic Territory from the UK Dependencies. South Georgia then received its first stamps. In 1985 the Falkland Islands Dependencies ceased to exist and South Georgia & the South Sandwich Islands came into existence as a UK overseas territory.

SOLAR START LTD SOUTH GEORGIA AND SOUTH SANDWICH ISLANDS



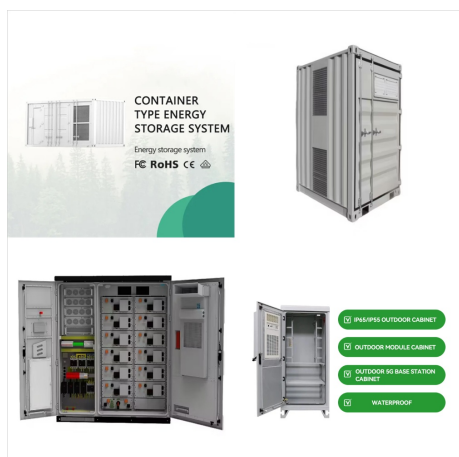
The South Atlantic island of South Georgia, situated south of the Antarctic Convergence, was the first Antarctic territory to be discovered. [1] It was first visited in 1675 by Antoine de la Roch?, an English merchant born in London to a French father. [2] He left Hamburg in 1674 as a passenger on a 350-ton vessel bound for Peru. [3] During the return journey, it was en route to Salvador ???



? 1/4 ?? 1/4 ? South Georgia and the South
Sandwich Islands, SGSSI ? 1/4 ????? ,??? ???



SOLAR START LTD SOUTH GEORGIA AND SOUTH SANDWICH ISLANDS



Some individual cruises may start or end at Buenos Aires, Montevideo, Puerto Madryn or Stanley, especially at the start or end of the season. South Georgia and Falkland Islands 17 or 21 days: Sept "24 date - 23 Oct "24 - dates - 9, 19, 21: \$9,995 - \$25,990: South Georgia and Antarctic Peninsula 15 or 20 days: Feb "25 date - 25 Mar "25 date - 16



British Overseas Territory of South Georgia and South Sandwich Islands (HMSO 1962a), with an EEZ13 of 1,449,532 km², a shelf area of 23,090 km² and an inshore fishing area of 14,940 km². 8 Act of Parliament dated 11 April 1843 declared the Falkland Islands as Crown colony, with Port William (renamed Stanley



OverviewGeographyHistoryLanguagesClimateGove
rnmentEconomyEcology

SOLAR START LTD SOUTH GEORGIA AND SOUTH SANDWICH ISLANDS



Immerse yourself in the largest king penguin colonies on the planet, home to an almost uncountable number of birds.; Wade ashore on South Georgia's beaches to watch battling bull elephant seals or playful fur seal pups gambolling in the surf.; Retrace the final leg of Shackleton's epic hike across the island to the old whaling station at Stromness.; Gaze in awe at some of ???



? 1/4 ?? 1/4 ?South Georgia and The South Sandwich Islands,? 1/4 ?SGSSI? 1/4 ?,,,??? 56?18????-59?30??????26?-28?30???,???



South Georgia and the South Sandwich Islands.
Published: September 2018. Citation:
UNEP-WCMC. 2018, A review of terrestrial protected areas: South Georgia and the South Sandwich Islands. Cambridge, UK. The UN Environment World Conservation Monitoring Centre (UNEP-WCMC) is the specialist biodiversity assessment centre of

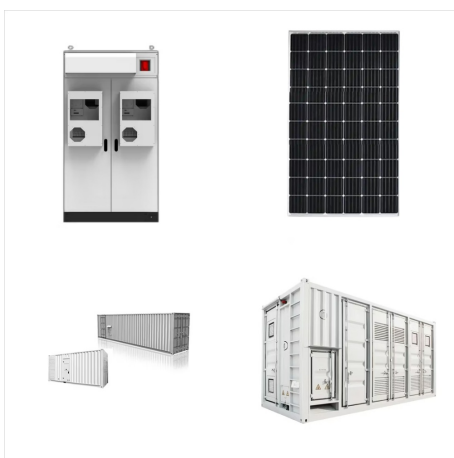
SOLAR START LTD SOUTH GEORGIA AND SOUTH SANDWICH ISLANDS



South Georgia and the South Sandwich Islands
Basic statistics Current diversification (number of products) 57 Potential new products more complex (percentage) 44 Potential new products 1,196 Export opportunity in more complex products (percentage) 9 Potential new products more complex than the country's average 525

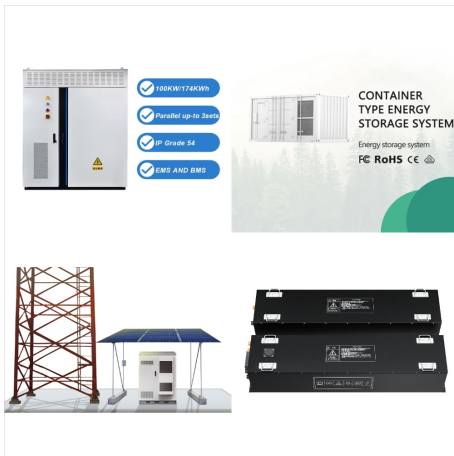


South Georgia is situated 800 miles SE of the Falkland Islands. The main island of South Georgia is approximately 170 km long and between 2 and 40 km wide and occupies an area of 3,755 km², more than half of which is permanently ice covered. The coast is rich in wildlife and home to huge colonies of penguins, seals and albatross.



Can't decide which city in South Georgia and the South Sandwich Islands to visit? Book great stays and search deals on the best South Georgia and the South Sandwich Islands hotels . Most stays are fully refundable.

SOLAR START LTD SOUTH GEORGIA AND SOUTH SANDWICH ISLANDS



If you're considering exploring South Georgia and the South Sandwich Islands beyond the usual tourist spots, our comprehensive guide on South Georgia and the South Sandwich Islands tourist visa offers deeper insights and broader options for travelers of different nationalities. For those transiting through other countries en route to South



on South Georgia the role has expanded, as have the responsibilities. This is an exciting. time to join GSGSSI as we embark on a 5-year strategy delivering on a range of stretching. goals that continue to place us amongst the best in the world for balancing. environmental protection with precautionary use. South Georgia & the South Sandwich Islands



GSGSSI would like to congratulate Tristan da Cunha on the establishment of their new Marine Protection Zone. With the establishment of this protected area, Tristan da Cunha joins South Georgia & the South Sandwich Islands and other UK Overseas Territories, including Ascension, St Helena, Pitcairn and the British Indian Ocean Territory, in making a lasting commitment to ???

SOLAR START LTD SOUTH GEORGIA AND SOUTH SANDWICH ISLANDS



The island of South Georgia is unusual among oceanic islands for having pre-Cretaceous sedimentary rocks underlying much of the island and a significant portion of felsic igneous rocks. Two-thirds of the island consists of intensely folded flysch, capped with Aptian age fossils, tuff and greywacke in the Cumberland Bay Series.

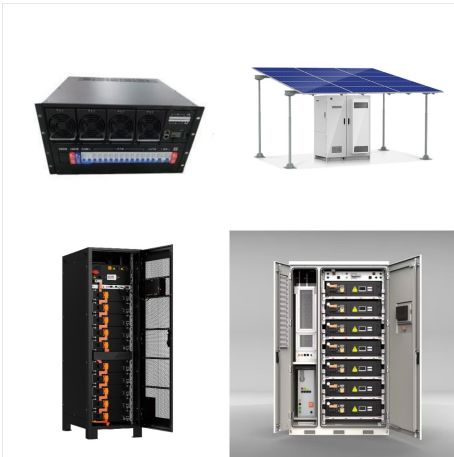


Hansard record of the item : "South Georgia and the South Sandwich Islands: Marine Protected Area" on Wednesday 22 November 2023. For a start, the Darwin Plus scheme has seen over ?32 million of funding go to 162 environmental projects in the OTs, including 33 projects in South Georgia alone.



South Georgia and the South Sandwich Islands Time - all countries and cities in GST time zone. Dayspedia. South Georgia and the South Sandwich Islands Time - all countries and cities in GST time zone. Show countdown before start. Set,,,, This site uses cookies. By continuing to use this website, you agree to our policies regarding the

SOLAR START LTD SOUTH GEORGIA AND SOUTH SANDWICH ISLANDS



Location: Shag Rocks general pelagic--over 2 miles offshore South Georgia and South Sandwich Islands. Great Shearwater *Ardenna gravis* # Count: 1. Date: 11 Dec 2024. Observer: Letitia Lussier.
Location: Shag Rocks general pelagic--over 2 miles offshore South Georgia and South Sandwich Islands.



1 South Georgia Island is the only inhabited island, with the summer-only settlement of Grytviken, and the only one regularly visited by cruise ships. Minor islands are ranged along its north coast ??? those visited by cruises are Willis, Bird, Albatross and Prion, and Cooper. The south coast is exposed to raging winds and waves and is seldom visited ??? Annenkov is the only large island ???



Our film "South Georgia ??? A Visitor's Guide" is compulsory viewing for all visitors to South Georgia. Its aim is to inspire visitors to respect and protect the island and its wildlife during their visit. Narrated by Sir David Attenborough, and produced by leading wildlife film-makers Silverback Films, the story showcases the incredible story of South Georgia's ecological recovery