

What is the ccTLD for South Georgia and the South Sandwich Islands?

The Internet country code top-level domain (ccTLD) for South Georgia and the South Sandwich Islands is .gs. The parts of the islands that are not permanently covered in snow or ice are part of the Scotia Sea Islands tundra ecoregion.

Who owns South Georgia and the South Sandwich Islands?

The United Kingdom claimed sovereignty over South Georgia in 1775 and the South Sandwich Islands in 1908. The territory of "South Georgia and the South Sandwich Islands" was formed in 1985; previously, it had been governed as part of the Falkland Islands Dependencies.

What happened to South Georgia and the South Sandwich Islands?

In 1985, South Georgia and the South Sandwich Islands ceased to be administered as a Falkland Islands Dependency and became a separate territory. The King Edward Point base, which had become a small military garrison after the Falklands War, returned to civilian use in 2001 and is now operated by the British Antarctic Survey.

Are South Georgia and the South Sandwich Islands mountainous?

South Georgia and the South Sandwich Islands are a collection of islands in the South Atlantic Ocean. Most of the islands, rising steeply from the sea, are rugged and mountainous. At higher elevations, the islands are permanently covered with ice and snow.

When did Argentina claim the South Sandwich Islands?

Argentina claimed South Georgia in 1927 and claimed the South Sandwich Islands in 1938. Argentina maintained a naval station, Corbeta Uruguay, on Thule Island in the South Sandwich Islands from 1976 until 1982 when it was closed by the Royal Navy.

Where are the South Sandwich Islands located?

The northernmost of the South Sandwich Islands form the Traversay Islands and Candlemas Islands groups,

SOUTH GEORGIA AND SOUTH SANDWICH ISLANDS ENERGY STORAGE NORTH AMERICA 2025



while the southernmost make up Southern Thule. The three largest islands - Saunders, Montagu, and Bristol - lie between the two. The islands' highest point is Mount Belinda (1,370 m or 4,495 ft) on Montagu Island.



Together, South Georgia and the South Sandwich Islands form part of the Scotia Arc, which extends from the tip of South America to Antarctica (and also includes the South Shetland and South Orkney Islands, though these are not part of the British dependency). The island of South Georgia is 105 mi (170 km) long, and about 25 mi (40 km) wide.

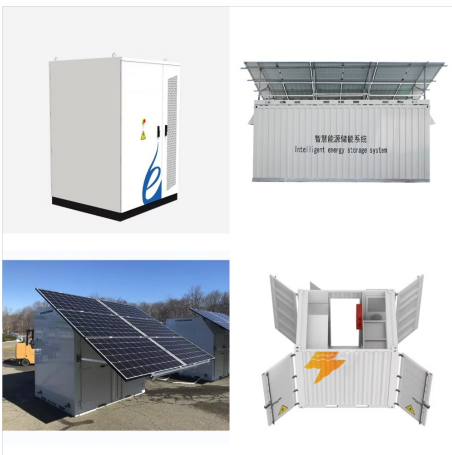


In 2025, The Battery Show and Electric & Hybrid Vehicle Technology Expo will bring together the new regional value chain in the Battery Belt to source the latest technologies across commercial and industrial transportation, advanced ???

SOUTH GEORGIA AND SOUTH SANDWICH ISLANDS ENERGY STORAGE NORTH AMERICA 2025



1. South Georgia is not part of Antarctica. South Georgia and the South Sandwich Islands are a chain of sub-Antarctic islands in the Southern Ocean. They are located more than 2,000km from the continent of Antarctica but the reason many people associate the two is that many cruises to Antarctica also stop by South Georgia.. 2.

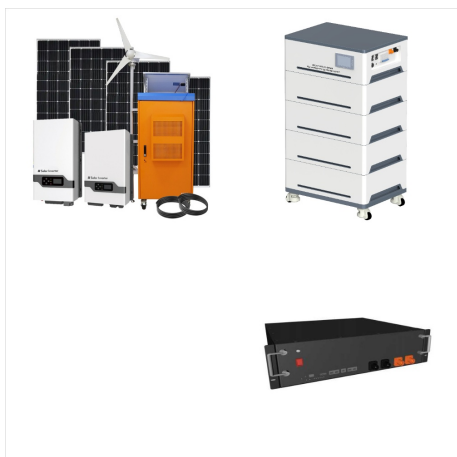


most of the islands are rugged and mountainous rising steeply from the sea; South Georgia is largely barren with steep, glacier-covered mountains; the South Sandwich Islands are of volcanic origin with some active volcanoes. Elevation . lowest point: Atlantic Ocean 0 m highest point: Mount Paget (South Georgia) 2,934 m. Natural resources . fish

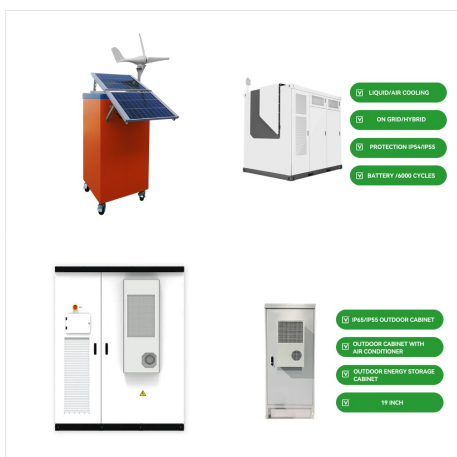


The South Sandwich Trench lies to the east and north-east of the islands, with depths reaching 8000m. The seabed and coastline are subject to intermittent topographical changes, with the South Sandwich plate subducting underneath the South American plate Like South Georgia, the South Sandwich Islands also support globally m Height of the

SOUTH GEORGIA AND SOUTH SANDWICH ISLANDS ENERGY STORAGE NORTH AMERICA 2025



South Georgia is home to millions of unique creatures such as penguins, seals, and seabirds. With Poseidon, not only can you visit this incredible place, but you also have the opportunity to become a guardian of its natural wonders.



South Georgia and the South Sandwich Islands are a remote group of islands in the southeastern Atlantic Ocean, about 1000 kilometers east of South America. Officially, they belong to Scotland and are a British Overseas Territory. The islands are famous for their rich and diverse marine life. Here you can meet seals, penguins and other marine



Summary: South Georgia and South Sandwich Islands lies in the Tundra climate zone (Köppen: Et). The mean average of annual temperatures range from a high of 0.02°C (32.04°F) to a low of 0.02°C (32.04°F).

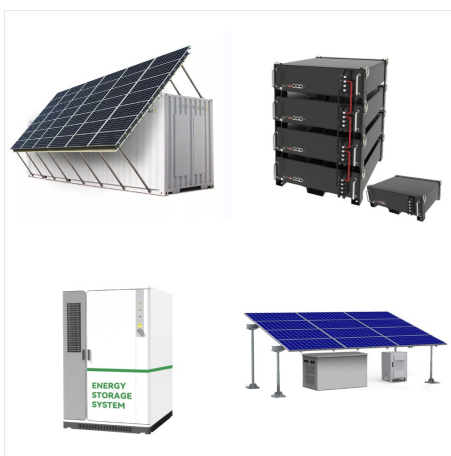
SOUTH GEORGIA AND SOUTH SANDWICH ISLANDS ENERGY STORAGE NORTH AMERICA 2025



The Government designated one of the world's largest sustainable use Marine Protected Areas (MPAs) in 2012 which seeks to protect the marine life and maintain ecological processes while allowing sustainable fishing to the highest international standards. Extending over 1m km2 the MPA was designated on the basis of scientific evidence and protects biodiversity through ???



Falklands - Argentina's Claims of Sovereignty by Effective Occupation 1820-1833, 2019. Argentina claims sovereignty of the Falklands by settlement in 1824 and then undisturbed use until 1833 and that the British had abandoned the islands in 1774, that the islands were in effect terra nullius (territory that nobody owns) and that they inherited the islands as successor to ???



Immerse yourself in the largest king penguin colonies on the planet, home to an almost uncountable number of birds.; Wade ashore on South Georgia's beaches to watch battling bull elephant seals or playful fur seal pups gambolling in the ???

SOUTH GEORGIA AND SOUTH SANDWICH ISLANDS ENERGY STORAGE NORTH AMERICA 2025



A list of 49 approved visitor sites is included as an annex in the Visiting South Georgia. Some approved sites are only suitable for Zodiac cruising and cruise ships carrying in excess of 200 passengers are only permitted to land passengers at certain sites.



Energy Vault has disclosed plans for a 57MW/114MWh battery energy storage system (BESS), named Cross Trails BESS, in Scurry County of Texas, US. which is expected to start in Q2 2025, represents the "first physically settled revenue floor contract" for a BESS in the ERCOT market, the company noted. Energy Vault signed an agreement



Event Focuses on Key Themes in Solar, Energy Storage, EV Charging Infrastructure, Manufacturing, and More. PORTLAND, ME & SAN DIEGO, CA ??? Intersolar & Energy Storage North America (IESNA), the premier tradeshow and conference for solar and storage professionals, today opened registration for its February 25-27, 2025 ???

SOUTH GEORGIA AND SOUTH SANDWICH ISLANDS ENERGY STORAGE NORTH AMERICA 2025



1 South Georgia Island is the only inhabited island, with the summer-only settlement of Grytviken, and the only one regularly visited by cruise ships. Minor islands are ranged along its north coast ??? those visited by cruises are Willis, Bird, Albatross and Prion, and Cooper. The south coast is exposed to raging winds and waves and is seldom visited ??? Annenkov is the only large island ???



Founded in 2004, DHgate has become the leading B2B cross-border e-commerce marketplace in China. Through global operations and offices, including in the USA and UK, DHgate reaches millions of people with trusted products and services.



Closeup map of the South Sandwich Islands NASA satellite photograph of Montagu Island. The South Sandwich Islands comprise 11 mostly volcanic islands (excluding tiny satellite islands and offshore rocks), with some active volcanoes. They form an island arc running north???south in the region 56°18'???59°27"S, 26°23'???28°08"W, between about 350 and 500 mi (300 and 430 nmi; ???

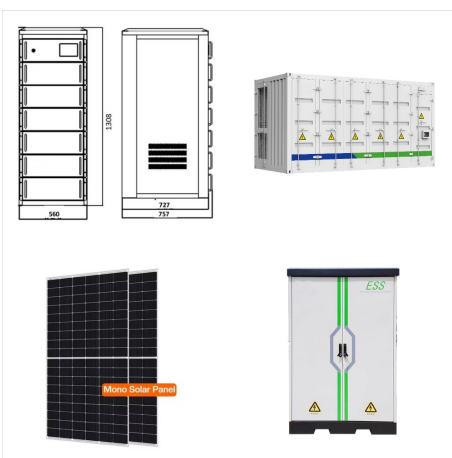
SOUTH GEORGIA AND SOUTH SANDWICH ISLANDS ENERGY STORAGE NORTH AMERICA 2025



T& D Equipment stood at first place when compared with other power tender categories in the North America region in Q4 2021 with 280 tenders and a 40.1% share, followed by Generation Equipment with 273 tenders and a 39.1% share and Energy Storage with 53 tenders and a 7.6% share during the quarter.



Wildlife highlights of South Georgia and South Sandwich Islands. 1. Penguins: Salisbury Plain, St Andrews Bay, Gold Harbour, and Right Whale Bay house the four largest King penguin colonies, whereas Copper Bay offers a wide variety of wildlife including Macaroni, Gentoo and Chinstrap penguins. 2. Seals: pups play in the surf off Fortuna Bay while enormous Southern elephant ???



Wildlife highlights of South Georgia and South Sandwich Islands. 1. Penguins: Salisbury Plain, St Andrews Bay, Gold Harbour, and Right Whale Bay house the four largest King penguin colonies, whereas Copper Bay offers a wide variety of ???

SOUTH GEORGIA AND SOUTH SANDWICH ISLANDS ENERGY STORAGE NORTH AMERICA 2025



South Georgia and the South Sandwich Islands are two geographically distinct groups of islands in the Atlantic Ocean sector of the Southern Ocean, situated between 26 and 43 degrees west longitude and 53 and 60 degrees south latitude, and at least 1,243 miles (2,000 km) from the closest continental shores of South America. They are a United

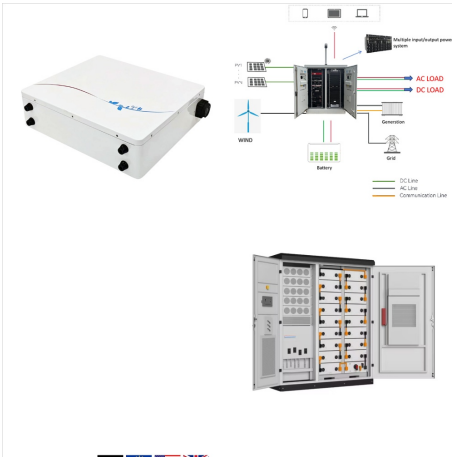


Both island clusters float due-east of the southern Patagonian coast, with the Falklands being about 500km off the shores (about the latitude of Rio Gallegos, Argentina) and South Georgia and the South Sandwich Islands (as the archipelago is known) floating a further 1,500km southeast of that. South Georgia is obviously the most remote and

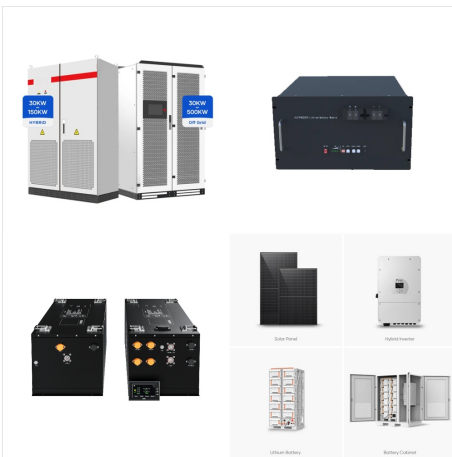


Energy use, import and production in South America is described in the following articles: Energy in Argentina; Energy in Brazil; Energy in Chile; Energy in Colombia; Energy in Peru; Energy in Uruguay; Energy in Venezuela This page was last edited on 19 February 2023, at 16:39

SOUTH GEORGIA AND SOUTH SANDWICH ISLANDS ENERGY STORAGE NORTH AMERICA 2025



Government of South Georgia & the South Sandwich Islands | 560 followers on LinkedIn. Leo Terram Propriam Protegat | As a United Kingdom Overseas Territory (UKOT), South Georgia & the South Sandwich Islands is an example of world-leading evidence-based sustainable management that has delivered globally significant environmental recovery.



Perched like small dots in the middle of the South Atlantic Ocean between South America, Africa, and the continent of Antarctica, South Georgia and the South Sandwich Islands have limited territory and a tiny population. ???



Energy Storage North America 2025. Event Dates. 2025-02-25 - 2025-02-27. Venue. San Diego Convention Center. Organizer. Diversified Communications. Website. Energy Storage North America was first combined with Intersolar North America in January 2022, in Long Beach, California.