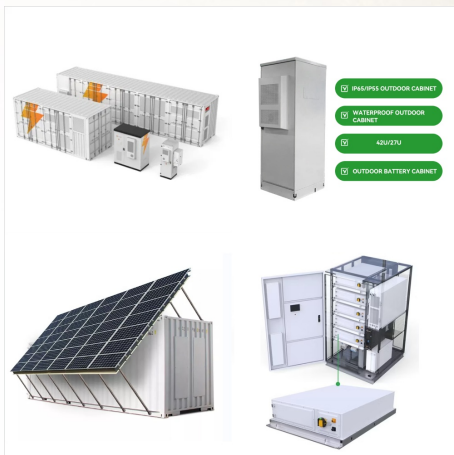




The history of South Georgia and the South Sandwich Islands is relatively recent. When European explorers discovered the islands, they were uninhabited, and their hostile climate, mountainous terrain, and remoteness made subsequent ???



HISTORY. South Georgia was probably first sighted by a London merchant, Antonio de la Roche, and then in 1756 by a Spanish Captain, Gregorie Jerez. The first landing and exploration was undertaken by Captain James Cook, who formally took possession in the name of



? 1/4 ?? 1/4 ? South Georgia and the South Sandwich Islands, SGSSI ? 1/4 ???? , ???

# SOUTH GEORGIA AND SOUTH SANDWICH ISLANDS KNIGHTS ENERGY



? 1/4 ?? 1/4 ?South Georgia and The South Sandwich Islands,? 1/4 ?SGSSI? 1/4 ?,,???



South Sandwich Islands, group of actively volcanic islets in the South Atlantic Ocean, north of the Weddell Sea and 470 miles (760 km) southeast of the island of South Georgia. They extend for 190 miles (305 km), occupy 120 square miles (310 square km), and are covered with glaciers.



? 1/4 ?? 1/4 ? South Georgia and the South Sandwich Islands, SGSSI ? 1/4 ????? , ???

# SOUTH GEORGIA AND SOUTH SANDWICH ISLANDS KNIGHTS ENERGY



South Georgia is an island in the South Atlantic Ocean that is part of the British Overseas Territory of South Georgia and the South Sandwich Islands. It lies around 1,400 kilometres (870 mi) east of the Falkland Islands. Stretching in ???



South Georgia is an island in the South Atlantic Ocean that is part of the British Overseas Territory of South Georgia and the South Sandwich Islands. It lies around 1,400 kilometres (870 mi) east of the Falkland Islands. Stretching in the east???west direction, South Georgia is around 170 kilometres (106 mi) long and has a maximum width of 35



# SOUTH GEORGIA AND SOUTH SANDWICH ISLANDS KNIGHTS ENERGY



1. South Georgia is not part of Antarctica. South Georgia and the South Sandwich Islands are a chain of sub-Antarctic islands in the Southern Ocean. They are located more than 2,000km from the continent of Antarctica but the reason ???



South Georgia and the South Sandwich Islands (SGSSI) are surrounded by oceans that are species-rich, have high levels of biodiversity, important endemism and which also support large aggregations of charismatic upper trophic level species.



South Georgia and the South Sandwich Islands (SGSSI) is a British Overseas Territory in the southern Atlantic Ocean. It is a remote and inhospitable collection of islands, consisting of South Georgia and a chain of smaller islands known as the South Sandwich Islands. South Georgia is 165 kilometres (103 mi) long and 35 kilometres (22 mi) wide

# SOUTH GEORGIA AND SOUTH SANDWICH ISLANDS KNIGHTS ENERGY



The history of South Georgia and the South Sandwich Islands is relatively recent. When European explorers discovered the islands, they were uninhabited, and their hostile climate, mountainous terrain, and remoteness made subsequent settlement difficult.



Immerse yourself in the largest king penguin colonies on the planet, home to an almost uncountable number of birds.; Wade ashore on South Georgia's beaches to watch battling bull elephant seals or playful fur seal pups gambolling in the ???



OverviewHistoryLanguagesGeographyClimateGovernmentEconomyEcology



# SOUTH GEORGIA AND SOUTH SANDWICH ISLANDS KNIGHTS ENERGY



(South Georgia and South Sandwich Islands)???,1982???



Photos of South Georgia and South Sandwich Islands. view 2 photos. Country Flag. View Details. Country Map. View Details. Locator Map. View Details. Contents. Introduction. Geography. People and Society. Environment. Government. Transportation. Military and Security. Introduction. Background. Tip. Visit the Definitions and Notes page to view a