

What is South Georgia and South Sandwich Islands?

Wikimedia Commons has media related to South Georgia and South Sandwich Islands. South Georgia and South Sandwich Islands are an overseas territory of the United Kingdom claimed by Argentina. They are in the southern part of the Atlantic Ocean. The territory was started in 1985, before that it was classed as part of the Falkland Islands.

Is South Georgia a small island?

It is a remote and inhospitable collection of islands, consisting of South Georgia and a chain of smaller islands known as the South Sandwich Islands. South Georgia is 165 kilometres (103 mi) long and 35 kilometres (22 mi) wide and is by far the largest island in the territory.

Who owns South Georgia and the South Sandwich Islands?

The United Kingdom claimed sovereignty over South Georgia in 1775 and the South Sandwich Islands in 1908. The territory of "South Georgia and the South Sandwich Islands" was formed in 1985; previously, it had been governed as part of the Falkland Islands Dependencies.

What happened to South Georgia and the South Sandwich Islands?

In 1985, South Georgia and the South Sandwich Islands ceased to be administered as a Falkland Islands Dependency and became a separate territory. The King Edward Point base, which had become a small military garrison after the Falklands War, returned to civilian use in 2001 and is now operated by the British Antarctic Survey.

Where is South Georgia located?

The South Georgia Group lies about 1,390 kilometres (860 mi; 750 nmi) east-southeast of the Falkland Islands, at 54°S; 36°W. It comprises South Georgia Island itself, by far the largest island in the territory, and the islands that immediately surround it and some remote and isolated islets to the west and east-southeast.

When did South Georgia become a part of the Falkland Islands?

The territory of "South Georgia and the South Sandwich Islands" was formed in 1985;

SOUTH GEORGIA AND SOUTH SANDWICH ISLANDS L



previously, it had been governed as part of the Falkland Islands Dependencies. Argentina claimed South Georgia in 1927 and claimed the South Sandwich Islands in 1938.



i 1/4 ?i 1/4 ? South Georgia and the South Sandwich Islands, SGSSI i 1/4 ?a?? , a??



The history of South Georgia and the South Sandwich Islands is relatively recent. When European explorers discovered the islands, they were uninhabited, and their hostile climate, mountainous terrain, and remoteness made subsequent a?|



South Sandwich Islands, group of actively volcanic islets in the South Atlantic Ocean, north of the Weddell Sea and 470 miles (760 km) southeast of the island of South Georgia. They extend for 190 miles (305 km), occupy 120 square miles (310 square km), and are covered with glaciers.

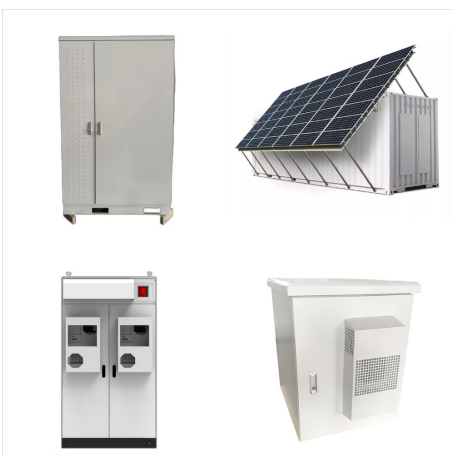
SOUTH GEORGIA AND SOUTH SANDWICH ISLANDS L



most of the islands are rugged and mountainous rising steeply from the sea; South Georgia is largely barren with steep, glacier-covered mountains; the South Sandwich Islands are of volcanic origin with some active a?|



South Sandwich Islands, group of actively volcanic islets in the South Atlantic Ocean, north of the Weddell Sea and 470 miles (760 km) southeast of the island of South Georgia. They extend for 190 miles (305 km), a?|



South Georgia and the South Sandwich Islands (SGSSI) is a British Overseas Territory in the southern Atlantic Ocean. It is a remote and inhospitable collection of islands, consisting of South Georgia and a chain of smaller islands known as the South Sandwich Islands. South Georgia is 165 kilometres (103 mi) long and 35 kilometres (22 mi) wide

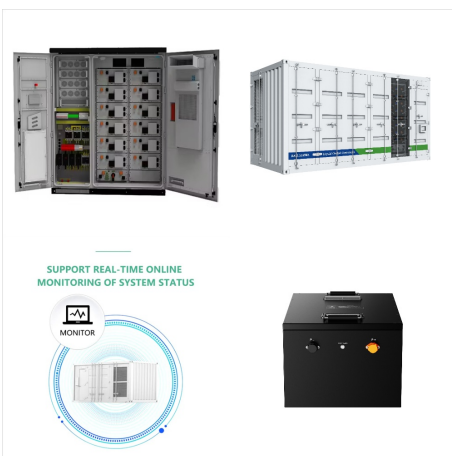
SOUTH GEORGIA AND SOUTH SANDWICH ISLANDS L



most of the islands are rugged and mountainous rising steeply from the sea; South Georgia is largely barren with steep, glacier-covered mountains; the South Sandwich Islands are of volcanic origin with some active volcanoes



South Georgia is an island in the South Atlantic Ocean that is part of the British Overseas Territory of South Georgia and the South Sandwich Islands lies around 1,400 kilometres (870 mi) east of the Falkland Islands. Stretching in the east-to-west direction, South Georgia is around 170 kilometres (106 mi) long and has a maximum width of 35 kilometres (22 mi).



SOUTH GEORGIA AND SOUTH SANDWICH ISLANDS L



The history of South Georgia and the South Sandwich Islands is relatively recent. When European explorers discovered the islands, they were uninhabited, and their hostile climate, mountainous terrain, and remoteness made subsequent settlement difficult.



Photos of South Georgia and South Sandwich Islands. [view 2 photos](#). [Country Flag](#). [View Details](#). [Country Map](#). [View Details](#). [Locator Map](#). [View Details](#). [Contents](#). [Introduction](#). [Geography](#). [People and Society](#). [Environment](#). [Government](#). [Transportation](#). [Military and Security](#). [Introduction](#). [Background](#). [Tip](#). Visit the [Definitions and Notes](#) page to view a



South Georgia and the South Sandwich Islands (SGSSI) is a British Overseas Territory in the southern Atlantic Ocean. This is a collection of islands, consisting of South Georgia and a chain of smaller islands known as the South Sandwich Islands. South Georgia is 165 km long and 1 to 35 km wide; it is the largest island on the territory.

SOUTH GEORGIA AND SOUTH SANDWICH ISLANDS L



South Georgia and South Sandwich Islands are an overseas territory of the United Kingdom claimed by Argentina. They are in the southern part of the Atlantic Ocean. The territory was started in 1985, before that it was classed as part of the Falkland Islands. The islands do not have a native population, but in 2006 they had around 20 people on



South Georgia and the South Sandwich Islands are two geographically distinct groups of islands in the Atlantic Ocean sector of the Southern Ocean, situated between 26 and 43 degrees west longitude and 53 and 60 degrees south latitude, and at least 1,243 miles (2,000 km) from the closest continental shores of South America. They are a United