

Who owns South Georgia and the South Sandwich Islands?

The United Kingdom claimed sovereignty over South Georgia in 1775 and the South Sandwich Islands in 1908. The territory of "South Georgia and the South Sandwich Islands" was formed in 1985; previously, it had been governed as part of the Falkland Islands Dependencies.

What is the ccTLD for South Georgia and the South Sandwich Islands?

The Internet country code top-level domain (ccTLD) for South Georgia and the South Sandwich Islands is .gs. The parts of the islands that are not permanently covered in snow or ice are part of the Scotia Sea Islands tundra ecoregion.

What happened to South Georgia and the South Sandwich Islands?

In 1985, South Georgia and the South Sandwich Islands ceased to be administered as a Falkland Islands Dependency and became a separate territory. The King Edward Point base, which had become a small military garrison after the Falklands War, returned to civilian use in 2001 and is now operated by the British Antarctic Survey.

Why is South Georgia a marine protected area?

On 23 February 2012, to protect marine biodiversity, the territory's government created the South Georgia and the South Sandwich Islands Marine Protected Area - comprising 1.07 million km² (410,000 sq mi). After the Falklands War in 1982, a full-time British military presence was maintained at King Edward Point on South Georgia.

Are South Georgia and the South Sandwich Islands mountainous?

South Georgia and the South Sandwich Islands are a collection of islands in the South Atlantic Ocean. Most of the islands, rising steeply from the sea, are rugged and mountainous. At higher elevations, the islands are permanently covered with ice and snow.

Does overexploitation affect wildlife in South Georgia and the South Sandwich Islands?

SOUTH GEORGIA AND SOUTH SANDWICH ISLANDS POWER STORAGE FOR HOME



In the past, the wildlife of South Georgia and the South Sandwich Islands was seriously depleted by overexploitation, mostly in the form of whaling. The Pew Bertarelli Ocean Legacy Project and its partners are exploring the feasibility of enhancing marine protections in the waters around South Georgia and the South Sandwich Islands.



(South Georgia and South Sandwich Islands)???, 1982???



Charter yacht visits usually begin in the Falkland Islands, last between four and six weeks, and enable guests to visit remote harbours of South Georgia and the South Sandwich Islands. Sailing vessels are now required to anchor out and can no longer tie up to the old whaling piers on shore.

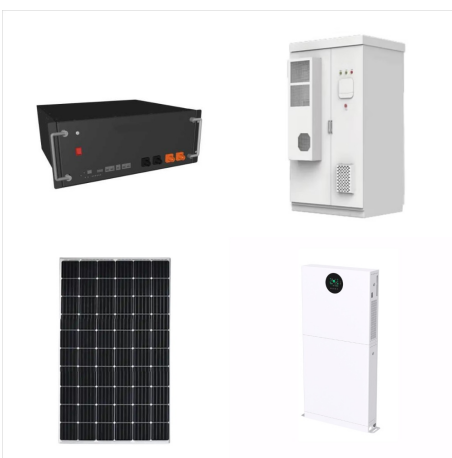
SOUTH GEORGIA AND SOUTH SANDWICH ISLANDS POWER STORAGE FOR HOME



? 1/4 ?? 1/4 ? South Georgia and the South Sandwich Islands, SGSSI ? 1/4 ???? , ???



Power demand at King Edward Point and Grytviken now runs almost entirely on the existing hydro. Diesel generating sets are for emergency back up only and to cycle the fuel storage. The use of diesel is not the most eco???friendly solution and has the added problems of ongoing cost, safe transportation, and storage, hence the installation of a



SOUTH GEORGIA AND SOUTH SANDWICH ISLANDS POWER STORAGE FOR HOME



As the core of the energy storage solution, LIVOLTEK three phase hybrid inverter offers flexible and scalable solutions for both residential and commercial applications. Max. PV Input Power: 5000Wp: Max. PV Input Voltage: 1000V: MPPT Voltage Range: 150 V ~ 850 V: No. of MPPTs/Strings per MPPT: 2/(1+1) Services For Home User Services For



We partnered with the Pew Bertarelli Ocean Legacy, Great Blue Ocean coalition, and Blue Nature Alliance to help designate a South Atlantic Marine Wildlife Sanctuary in South Georgia and the South Sandwich Islands.



The South Sandwich Islands have no permanent inhabitants, while South Georgia has a transitory population of scientists, government officials and military personnel. Both are mountainous and capped by glaciers.

SOUTH GEORGIA AND SOUTH SANDWICH ISLANDS POWER STORAGE FOR HOME



The South Sandwich Islands have no permanent inhabitants, while South Georgia has a transitory population of scientists, government officials and military personnel. Both are mountainous and capped by glaciers.