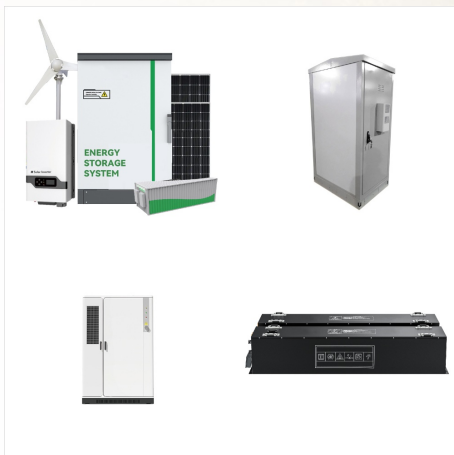




1. South Georgia is not part of Antarctica. South Georgia and the South Sandwich Islands are a chain of sub-Antarctic islands in the Southern Ocean. They are located more than 2,000km from the continent of Antarctica but the reason many people associate the two is that many cruises to Antarctica also stop by South Georgia.. 2.



Closeup map of the South Sandwich Islands NASA satellite photograph of Montagu Island. The South Sandwich Islands comprise 11 mostly volcanic islands (excluding tiny satellite islands and offshore rocks), with some active volcanoes. They form an island arc running north-south in the region 56°18'S, 26°23'W, between about 350 and 500 mi (300 and 430 nmi; ???

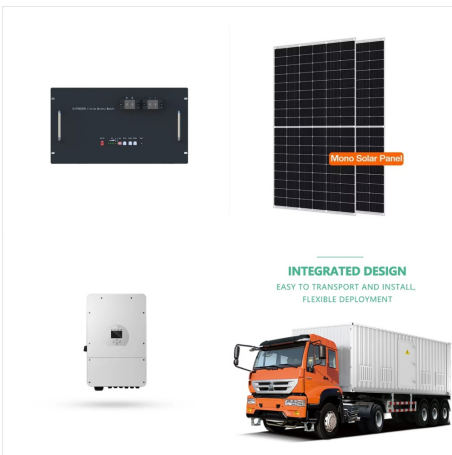


? 1/4 ?? 1/4 ? South Georgia and the South Sandwich Islands, SGSSI ? 1/4 ???? ,??? ,3592 ???

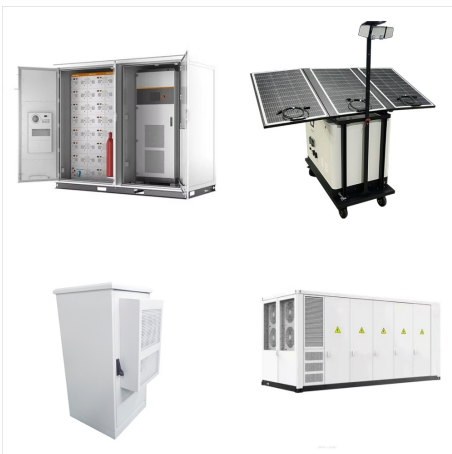
SOUTH GEORGIA AND SOUTH SANDWICH ISLANDS SOLAR ECO SYSTEMS



Our film "South Georgia ??? A Visitor's Guide" is compulsory viewing for all visitors to South Georgia. Its aim is to inspire visitors to respect and protect the island and its wildlife during their visit. Narrated by Sir David Attenborough, and produced by leading wildlife film-makers Silverback Films, the story showcases the incredible story of South Georgia's ecological recovery



The new terrestrial protected area covers a total of 3,800 square kilometers and complements the marine protected area of 1.24 million square kilometers that has been in place since 2012, meaning that the entire water and land area of South Georgia and the South Sandwich Islands is now under one protected area system.



GSGSSI would like to congratulate Tristan da Cunha on the establishment of their new Marine Protection Zone. With the establishment of this protected area, Tristan da Cunha joins South Georgia & the South Sandwich Islands and other UK Overseas Territories, including Ascension, St Helena, Pitcairn and the British Indian Ocean Territory, in making a lasting commitment to ???

SOUTH GEORGIA AND SOUTH SANDWICH ISLANDS SOLAR ECO SYSTEMS



Today's Image of the Day from the European Space Agency features a Copernicus Sentinel-2 photograph of South Georgia, a remote and rugged island located in the southern Atlantic Ocean.
"Linked with the South ???



The Southern Ocean comprises about 6.5% of the world's ocean (Earle and Glover, 2009). It is defined on maps by a political boundary of 60 °S; however, the physical boundary is marked by the Antarctic Convergence which varies in position but can be as far north as 45 °S, and lies to the north of South Georgia/Shag Rocks. The region is characterised by ???



? 1/4 ?? 1/4 ?South Georgia and The South Sandwich Islands,? 1/4 ?SGSSI? 1/4
?,,???56?18???-59?30??????26?-28?30???,???
???

SOUTH GEORGIA AND SOUTH SANDWICH ISLANDS SOLAR ECO SYSTEMS



The South Georgia and South Sandwich Islands MPA (hereafter, SGSSI MPA) 4 covers the entirety of the Maritime Zone, extending to 200 nm. The MPA is one of the world's largest, covering an area of 1.24 million km². It was established with the aim of conserving the rich marine biodiversity and for providing a framework for marine environmental



Immerse yourself in the largest king penguin colonies on the planet, home to an almost uncountable number of birds.; Wade ashore on South Georgia's beaches to watch battling bull elephant seals or playful fur seal pups gambolling in the ???

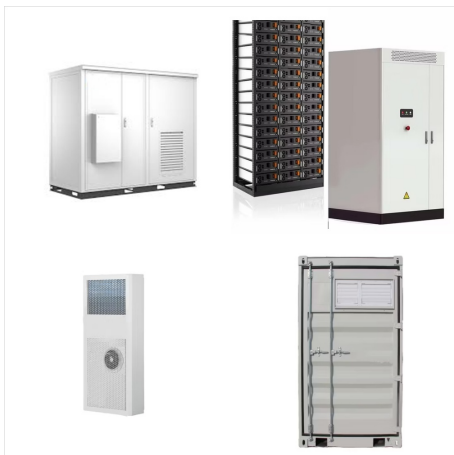


South Georgia, sometimes referred to as Isla San Pedro, is an island that is located in the South Atlantic Ocean and is part of the British administration of the South Sandwich Islands and part of the British Overseas Territory of South Georgia. The island is located 1400km from the Falkland Islands and is about 170km long and 35km wide.

SOUTH GEORGIA AND SOUTH SANDWICH ISLANDS SOLAR ECO SYSTEMS



Territories of South Georgia and the South Sandwich Islands NIGEL JAMES PHILLIPS C.B.E., Commissioner. ENTRY CONTROL ORDINANCE 2022 (No. 2 of 2022) (enacted: 4 May 2022) (published: 13 May 2022) (commencement: in accordance with section 2) AN ORDINANCE To provide for the control of entry into and residence in South Georgia and the South



South Georgia and the South Sandwich Islands (SGSSI) is a British Overseas Territory in the southern Atlantic Ocean. It is a remote and inhospitable collection of islands, consisting of South Georgia and a chain of smaller islands known ???



Deciding on the best time to visit South Georgia Island can be tricky. This article breaks down each season, giving you detailed information. South Georgia Island is one of the world's most beautiful southerly eco-systems, with vast mountains and magnificent glaciers spanning it's 165km length. Part of the South Sandwich Islands in

SOUTH GEORGIA AND SOUTH SANDWICH ISLANDS SOLAR ECO SYSTEMS



South Georgia South Georgia and its associated smaller offshore islands, islets and stacks lie between the parallels of 53°00'S and 55°00'S, and between the meridians of 34°30'W and 42°00'W. These islands are very isolated, lying about 870 miles (1,400 km) east-south-east of the Falkland Islands, 963 miles (1,550 km) north-east of



1/4 1/4 South Georgia and The South Sandwich Islands, 1/4 SGSSI? 1/4 ,,, 56°18'??-59°30'????26°-28°30'??,???



The marine protected area (MPA) for South Georgia and South Sandwich Islands is subject to scientific review every five years to gauge effectiveness and incorporate the most up-to-date research and data. This is the second such review, and protections have been strengthened each time. Full protections within the MPA now encompass approximately

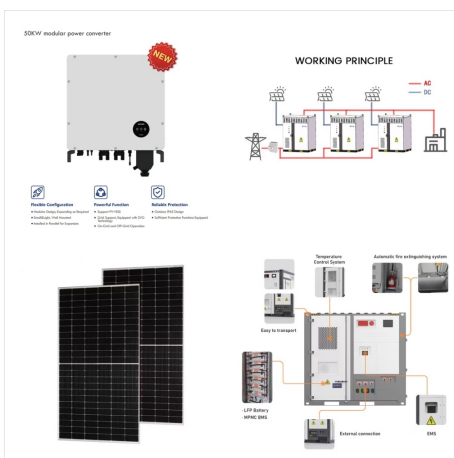
SOUTH GEORGIA AND SOUTH SANDWICH ISLANDS SOLAR ECO SYSTEMS



The government of South Georgia and South Sandwich Islands took further steps in 2018 after an environmental review to fully protected 23% of its waters. However, the rest of the area remained open to industrial fishing, which would disrupt food availability and the interconnected food web. Additionally, since the 2018 review, the impacts of



Deciding on the best time to visit South Georgia Island can be tricky. This article breaks down each season, giving you detailed information. South Georgia Island is one of the world's most beautiful southerly eco ???



Site description (2006 baseline) South Georgia and its associated smaller offshore islands, islets and stacks lie between the parallels of 53 30'S and 55 00'S, and between the meridians of 34 30'W and 42 00'W. These islands are very isolated, lying about 1400 km east-south-east of the Falkland Islands, 1550 km north-east of Cape Dubouzet (the nearest point on the Antarctic ???

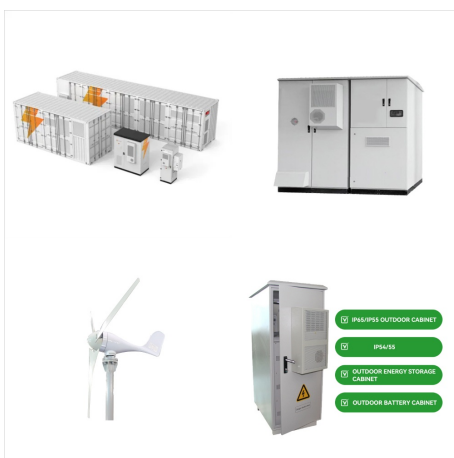
SOUTH GEORGIA AND SOUTH SANDWICH ISLANDS SOLAR ECO SYSTEMS



? 1/4 ?? 1/4 ?South Georgia and The South Sandwich Islands,? 1/4 ?SGSSI? 1/4
?,???56?18???-59?30???????26?-28?30???,???2,
000???????7,310???



??? The Government of South Georgia & the South Sandwich Islands (GSGSSI) is committed to a system of terrestrial protected areas and has chosen to adopt a phased approach to deliver this.
??? As part of the initial phase of this work, two Specially Protected Areas have been designated; the South Georgia Terrestrial Protected Area (SG TPA) and the

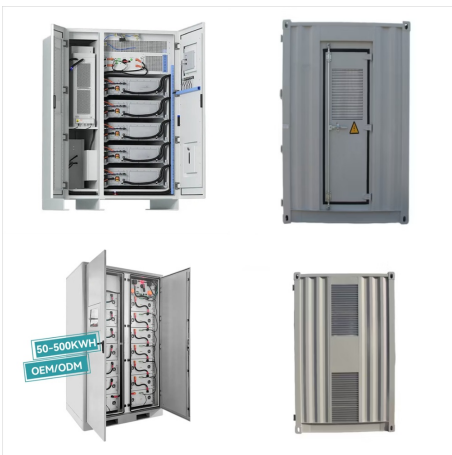


In 2012, the Government of South Georgia & the South Sandwich Islands (GSGSSI) declared a sustainable use Marine Protected Area (MPA) across its maritime zone, covering an area of 1.24 million km

SOUTH GEORGIA AND SOUTH SANDWICH ISLANDS SOLAR ECO SYSTEMS



South Georgia and the Sandwich Islands are UK Overseas Territories. And in 2022 the Government designated them as Protected Areas for better conservation and to keep tourism responsible too. Secret Atlas is committed to sustainable travel and limiting our impact on the places we visit. We also follow Arctic Expedition Cruise Operators (AECO

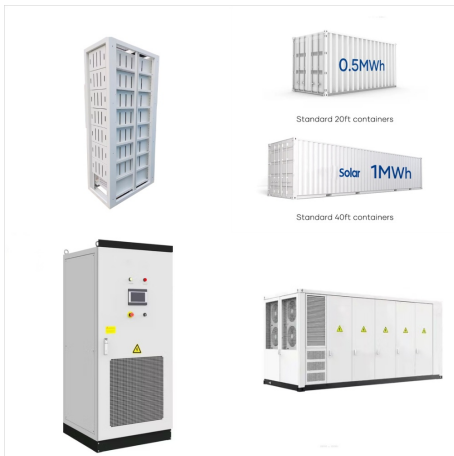


Today's Image of the Day from the European Space Agency features a Copernicus Sentinel-2 photograph of South Georgia, a remote and rugged island located in the southern Atlantic Ocean. "Linked with the South Sandwich Islands to form a British Overseas Territory, this southern Atlantic island is a haven for a vast array of wildlife," said ESA.



A list of 49 approved visitor sites is included as an annex in the Visiting South Georgia. Some approved sites are only suitable for Zodiac cruising and cruise ships carrying in excess of 200 passengers are only permitted to land passengers at certain sites.

SOUTH GEORGIA AND SOUTH SANDWICH ISLANDS SOLAR ECO SYSTEMS



The South Georgia and South Sandwich Islands Marine Protected Area (SGSSI MPA) was established in 2012 to protect and conserve the region's rich and diverse marine life, whilst allowing sustainable and carefully regulated fisheries, and a set of objectives was established against which the effectiveness of the MPA could be assessed.

South Georgia is situated 800 miles SE of the Falkland Islands. The main island of South Georgia is approximately 170 km long and between 2 and 40 km wide and occupies an area of 3,755 km², more than half of which is permanently ice covered. The coast is rich in wildlife and home to huge colonies of penguins, seals and albatross.

SOUTH GEORGIA AND SOUTH SANDWICH ISLANDS SOLAR ECO SYSTEMS



Government of South Georgia & the South Sandwich Islands | 560 followers on LinkedIn. Leo Terram Propriam Protegat | As a United Kingdom Overseas Territory (UKOT), South Georgia & the South Sandwich Islands is an example of world-leading evidence-based sustainable management that has delivered globally significant environmental recovery.