

Can you carry a lithium ion battery on a plane?

Lithium-ion batteries, including those in laptops and power banks, are allowed but limited to 100 watt hours per battery, with the option to carry up to two larger 101-160-watt-hour batteries with airline approval. Lithium metal (non-rechargeable) batteries are permitted up to 2 grams of lithium per battery.

Can lithium batteries cause a fire on a plane?

Smoke and fire incidents involving lithium batteries can be mitigated by the cabin crew and passengers inside the aircraft cabin. If carry-on baggage is checked at the gate or plane side, spare lithium batteries, electronic cigarettes, and vaping devices must be removed from the baggage and kept with the passenger in the aircraft cabin.

Can you carry a battery on a plane?

All battery packs face very strict guidelines for air travel. Lithium-ion (rechargeable) batteries and portable batteries that contain lithium-ion can only be packed in carry-on baggage. They're limited to a rating of 100 watt hours (Wh) per battery. With airline approval, you can bring two larger spare batteries (up to 160 Wh).

Can you put lithium batteries in checked luggage?

American Airlines: All lithium batteries and devices with them installed can only be in carry-on luggage. Delta: You can put a device with an installed lithium battery into your checked luggage if it is fully powered off. Spare lithium batteries are not allowed in checked luggage, however.

How many watts can a lithium ion battery last?

Lithium metal (non-rechargeable) batteries are limited to 2 grams of lithium per battery. Lithium ion (rechargeable) batteries are limited to a rating of 100 watt hours (Wh) per battery. These limits allow for nearly all types of lithium batteries used by the average person in their electronic devices.

Are e-cigarettes allowed on Southwest Airlines?

Because e-cigarettes are designed to operate by creating heat, they are not permitted in checked baggage and must be transported in carryon baggage only. E-cigarette use is forbidden onboard aircraft. If you have more questions regarding items acceptable for travel, visit our FAQ's or contact a Southwest Airlines

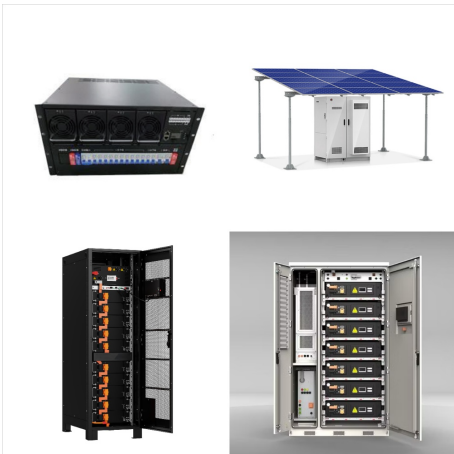
SOUTHWEST AIRLINES LITHIUM BATTERIES



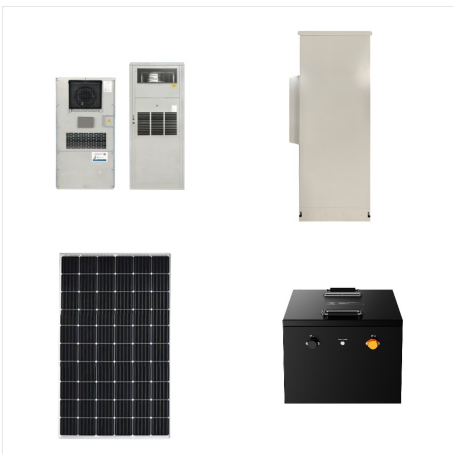
Customer Representative.



A place to discuss all things Southwest Airlines. Please read Sub-Reddit rules before posting. Not an official SWA forum. You shouldn't have a problem with Lithium Ion batteries in your carry-on luggage regardless of capacity. You are correct that you cannot have Lithium batteries in your checked baggage.

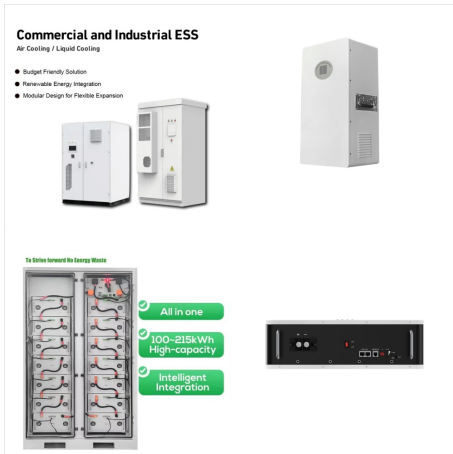


A place to discuss all things Southwest Airlines. Please read Sub-Reddit rules before posting. Lithium Battery Southwest Policy Bringing Christmas presents on a flight. One of the gifts is a robotic toy dog with a lithium 3.2V battery. Will this be allowed on the plane? Locked post. New comments cannot be posted.



Lithium batteries are commonly used in electronic devices and can pose safety risks if mishandled or damaged. For this reason, there are restrictions on the transportation of certain lithium batteries in checked luggage: Spare Lithium Batteries. Spare lithium batteries (those not installed in a device) aren't allowed in checked luggage.

SOUTHWEST AIRLINES LITHIUM BATTERIES



Although there is an international guideline, some airlines regulate the transport of drones differently. In this article, I explain what you have to take into account and list the regulations of individual airlines. Today, almost all drones are powered by a lithium-polymer battery (LiPo for short). They are classified as dangerous goods



Lithium-ion batteries, including those in laptops and power banks, are allowed but limited to 100 watt hours per battery, with the option to carry up to two larger 101-160-watt-hour batteries with



Wet cell battery / spillable (Southwest Airlines to remove from device) Dry cell battery / nonspillable Lithium-ion (Li-ion) battery (battery will remain installed) Lithium-ion (Li-ion) battery (battery will be removed and transported in cabin) Manual wheelchair / mobility aid???

SOUTHWEST AIRLINES LITHIUM BATTERIES



A recent trend of lithium battery fires. This Hawaiian Airlines incident follows another case in July when an American Airlines flight boarding in San Francisco was evacuated after a laptop fire was detected in a passenger's bag. In that incident, the crew also acted quickly to contain the fire, and no injuries were reported aboard the yet-to



Review information on Southwest Airlines policy regarding manual wheelchairs and mobility aids. We are happy to take care of your manual or battery-powered wheelchair or mobility aid during your travel. Due to the size of the aircraft cargo compartment doors (48 inches width x 35 inches height), some wheelchairs or mobility aids may not fit



United Airlines: United Airlines allows lithium-ion batteries under 100 watt-hours in checked baggage. Batteries between 100 and 300 watt-hours must be in carry-on baggage with terminal covers. Southwest Airlines: Southwest Airlines permits lithium-ion batteries of up to 300 watt-hours in checked baggage. Like others, terminals must be protected.

SOUTHWEST AIRLINES LITHIUM BATTERIES



The lithium battery inside a personal device caught fire on a Spirit Airlines flight earlier this week. getty. A Spirit Airlines flight from Dallas to Orlando was diverted to Jacksonville earlier



Tablets are known for having lithium batteries. Larger lithium batteries. If you want to bring larger lithium ion batteries you have to abide by special size requirements and also get permission from the airline. With airline approval, you can carry up to two spare larger lithium ion batteries (101???160 Wh) or Lithium metal batteries (2-8 grams).



Lithium metal batteries (a.k.a.: non-rechargeable lithium, primary lithium). These batteries are often used with cameras and other small personal electronics. Consumer-sized batteries (up to 2 grams of lithium per battery) may be carried. This includes all the typical non-rechargeable lithium batteries used in cameras (AA, AAA, 123, CR123A, CR1

SOUTHWEST AIRLINES LITHIUM BATTERIES



Southwest Airlines welcomes passengers with mobility scooters, but specific guidelines apply. Scooters must be battery-operated, weigh under 100 pounds, and not exceed 33 inches in width. Passengers must notify the airline 48 hours in advance, arrive early, and adhere to post-flight procedures. While Southwest Airlines doesn't provide scooters, they ???



Lithium batteries, e-cigarettes, and lighters are all examples of this. Child Restraint Systems and Strollers (CRSs) International travel is a must. Southwest Airlines (WN) enables each passenger to check one carry-on bag and one personal item (purse, briefcase, laptop bag) for free. The following size and weight limits apply to carry-on



Lithium-ion (Li-ion) Battery (Battery will remain installed) Lithium-ion (Li-ion) Battery (Battery will be removed and transported as a carryon item)
Instructions or Other Special Precautions:
Removable Parts: Wheelchair, Scooter, Information Form, Southwest Airlines,

SOUTHWEST AIRLINES LITHIUM BATTERIES



The SmartScoot??? electric mobility scooter meets Southwest Airlines and the Federal Aviation Administration (FAA) regulations for traveling with mobility scooters and lithium-ion batteries. The mobility scooter uses a lithium-ion (li-ion) battery rated at 288-watt hours, which is below Southwest's maximum of 300-watt hours for such batteries.



Not nearly as many as you'll find inside the terminal though. And once the bag is on the airplane, it won't be heard by anything, and any phones in the cabin likely won't have sufficient location data unless they're close to a window, but they still have to be able to hear the 1mW AirTag buried in your luggage in a pile of other luggage through the seats and floor of the aircraft.



Spare (uninstalled) lithium ion and lithium metal batteries, including power banks and cell phone battery charging cases, must be carried in carry-on baggage only. With airline approval, passengers may also carry up to two spare larger lithium ion batteries (101???160 Wh) or lithium metal batteries (2-8 grams).

SOUTHWEST AIRLINES LITHIUM BATTERIES



This covers typical dry cell batteries, lithium metal, and lithium ion batteries for consumer electronics (AA, AAA, C, D, button cell, camera batteries, laptop batteries, etc.) Spare (uninstalled) lithium metal and lithium ion batteries are always prohibited in checked baggage and must be placed in carry-on.



Southwest Airlines Community. I believe that will be a problem checking the case due to the lithium batteries? Best to contact SWA in advance and get guidance (and document who gives you the guidance) before you show up ???



Most consumer lithium ion batteries are below this size. Lithium ion batteries that are between 101 ??? 160 wh are allowed in carry-on bags with airline approval. Lithium metal batteries (a.k.a.: non-rechargeable lithium, primary lithium). These batteries are often used with cameras and other small personal electronics. Consumer-sized batteries

SOUTHWEST AIRLINES LITHIUM BATTERIES



Per Southwest Airlines: Lithium Batteries Effective January 15, 2018, Southwest Airlines limits spare lithium-ion batteries to a maximum of 20 per person. Power banks, also known as portable chargers or external battery chargers, are ???



Spare (uninstalled) lithium ion and lithium metal batteries, including power banks and cell phone battery charging cases, must be carried in carry-on baggage only. Lithium metal (non-rechargeable) batteries are limited to 2 grams of lithium per battery. Lithium ion (rechargeable) batteries are limited to a rating of 100 watt hours (Wh) per battery.

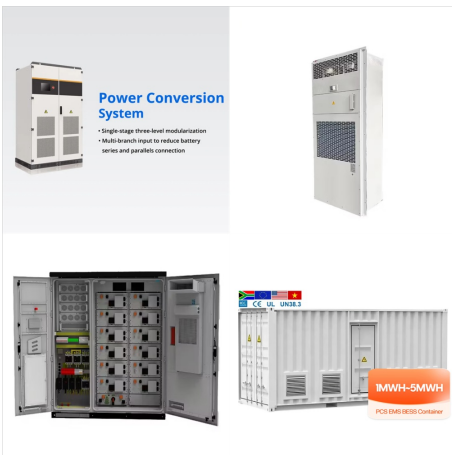


Southwest Airlines flight from Chicago to Miami was diverted due to smoke being detected onboard from a cell phone. 2 other similar incidents have occurred in the past six months with two other US carriers. Lithium-ion batteries, while ???

SOUTHWEST AIRLINES LITHIUM BATTERIES



The batteries in question are (usually) AA alkaline batteries for use in my underwater flashlights. I bring along extra batteries in an unopened package. I also have a small (900 mAh) Lithium Ion battery in my underwater video camera. My understanding is that this is allowed as long as it is inside the camera and inside my carry-on luggage.



Lithium batteries, which power everyday devices, can catch fire if damaged or if battery terminals are short-circuited. Devices containing lithium metal batteries or lithium ion batteries, including ??? but not limited to ??? smartphones, tablets, cameras and laptops, should be kept in carry-on