



Quickest stock price recoveries post dividend payment. This trading strategy involves purchasing a stock just before the ex-dividend date in order to collect the dividend and then selling after the stock price has recovered. Southwest Iowa Renewable Energy LLC - Unit - Class A OCT 22, 05:00 PM EDT \$9088.0 +0% Dividend (Fwd) N/A Yield (Fwd)



Southwest Iowa Renewable Energy LLC balance sheet, income statement, cash flow, earnings & estimates, ratio and margins. Stock Movers: Gainers, decliners and most actives market activity



Southwest Iowa Renewable Energy LLC (SIRE), the operator of an ethanol plant in Council Bluffs, has bought back the Series B membership units held by Bunge North America LLC, part of food group Bunge Ltd (NYSE:BG), the company announced on Thursday.

SOUTHWEST IOWA RENEWABLE ENERGY STOCK



Southwest Iowa Renewable Energy LLC SWIOU (U.S.: OTC) search. View All companies. Stock Movers: Gainers, decliners and most actives market activity tables are a combination of NYSE, Nasdaq



COUNCIL BLUFFS, Iowa, Feb. 2, 2021 /PRNewswire/ -- Southwest Iowa Renewable Energy, LLC ("SIRE" or the "Company") today announced the appointment of Kevin Ross as a member of SIRE's board of

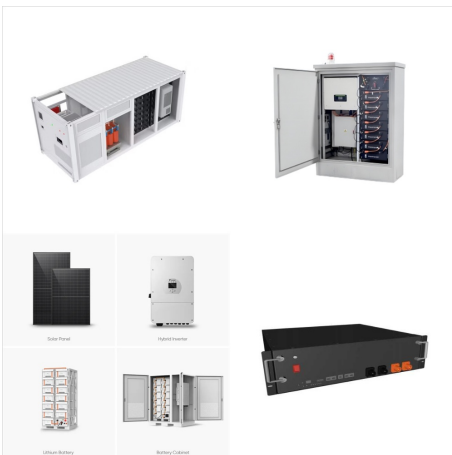


COUNCIL BLUFFS, Iowa, Jan. 2, 2020 /PRNewswire/ -- Southwest Iowa Renewable Energy, LLC ("SIRE") and Bunge North America, LLC ("Bunge") In addition to the stock repurchase, SIRE will assume

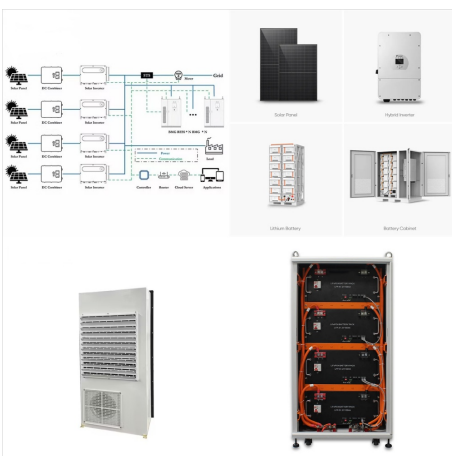
SOUTHWEST IOWA RENEWABLE ENERGY STOCK



Official State of Iowa Website. Agencies A-Z
Programs & Services. Health & Human Services.
Search. Menu. Main navigation. Southwest Iowa
Renewable Energy SIRE. Physical Location.
Location Address. 10868 189th St Council Bluffs, IA
51501. Areas Served. Pottawattamie. Type:
Business.



COUNCIL BLUFFS, Iowa, Jan. 2, 2020
/PRNewswire/ -- Southwest Iowa Renewable
Energy, LLC ("SIRE") and Bunge North America,
LLC ("Bunge") announced that SIRE repurchased
Bunge's Series B membership units effective
December 31, 2019. The purchase was made under
the terms of the Bunge Membership Interest
Purchase Agreement and ends ???



An Iowa company is suing its marketing partner for
\$7 million in damages caused by alleged errors in
attempting to sell fuel-grade ethanol produced in
Iowa and Nebraska. Southwest Iowa Renewable
Energy, or SIRE, is a Council Bluffs-based company
that has hundreds of member ethanol producers in
Iowa, Nebraska, Wisconsin, Minnesota, and 18 ???

SOUTHWEST IOWA RENEWABLE ENERGY STOCK



-Southwest Iowa Renewable Energy LLC received a \$1,000,000 grant to install a slurry heating and reduced backset system at its dry-mill ethanol production facility in rural Pottawattamie County. This project is expected to realize \$3,181,600 per year in savings and to replace 36,688,453 kilowatt hours per year, which is enough electricity to



Find company research, competitor information, contact details & financial data for Southwest Iowa Renewable Energy, LLC of Council Bluffs, IA. Get the latest business insights from Dun & Bradstreet. Southwest Iowa Renewable Energy, LLC.



COUNCIL BLUFFS, Iowa, Aug. 7, 2019 /PRNewswire/ -- Southwest Iowa Renewable Energy, LLC ("SIRE" or the "Company") announced its unaudited financial results for the three and nine months ended June

SOUTHWEST IOWA RENEWABLE ENERGY STOCK



Southwest Iowa Renewable Energy, Llc; 10868 189TH ST. Council Bluffs, IA 51501; Owner: SOUTHWEST IOWA RENEWABLE ENERGY, LLC; State Facility ID: 311181101; Federal Facility ID: 110041626194; Location Supplement: Location Comment: UNCERTAIN OF EXACT LOCATION OF PLANT ENTRANCE. USED GOOGLE EARTH TO LOCATE.



Research Southwest Iowa Renewable Energy's (OTCPK:SWIO.U) stock key valuation metrics while comparing it with its industry peers & market side by side. Southwest Iowa Renewable Energy, LLC. OTCPK:SWIO.U Stock Report. Market Cap: US\$81.6m. Add to watchlist. Company Overview; 1 Valuation; 2 Future Growth; 3 Past Performance; 4 Financial