

What is a Corvus orca?

Suitable for a variety of marine applications and vessel types, the Orca offers both energy and high power. Based on proven performance, the Corvus Orca set the industry standard in marine battery system safety and reliability. No other maritime energy storage system can compete with the installation count of the Orca.

Which vessel types are suitable for the Corvus orca ESS?

Typical vessel types suitable for the Corvus Orca ESS include: Passive single-cell Thermal Runaway (TR) Isolation Exceeds Class and Flag requirements for TR gas venting or send us a message below. Corvus Orca is the industry-leading marine battery energy storage system with the most installations worldwide.

Who is Corvus Energy?

Corvus Energy, the leader in marine Energy Storage Systems (ESS), has worked hard to achieve the highest standards of safety with its Orca (TM) ESS, and is the only supplier to carry DNV, Lloyd's Register, ABS and BV product Type Approvals. Today is the Day of the Seafarer.

Does Corvus Energy re-invent the Maritime ESS?

Corvus Energy re-invents the maritime ESS with the Orca ESS product line, setting new standards of safety, performance and economics. Richmond, B.C. - June 20, 2016 - Corvus Energy, the world's leading manufacturer of lithium-ion based energy storage systems (ESS), is pleased to announce the introduction of its next generation product line, Orca ESS.

What makes Corvus a reliable marine energy storage system?

Corvus combined its industry-leading capabilities in marine battery system development with hands-on experience as the provider of the largest global base of maritime energy storage systems in operation to build the industry's safest, most reliable marine ESS.

Why did Corvus develop orca ESS?

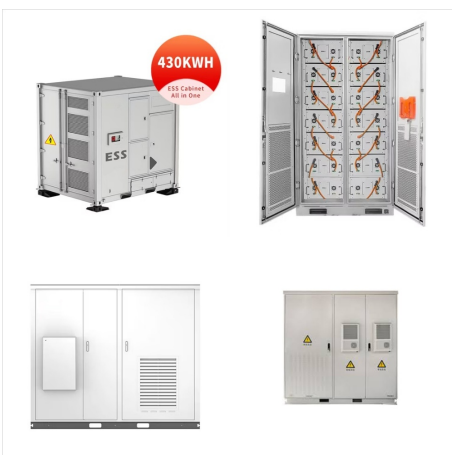
Corvus demonstrated that Orca was designed with a higher level of fault tolerance by eliminating the possibility of thermal runaway spreading to neighbouring cells within a single module. The Orca ESS design is optimized for heat-shedding to maintain a uniform temperature across the cell, which enables the cell to operate at its maximum capability.



The Corvus Orca ESS is the most installed marine battery energy storage system worldwide, operating in over 700 vessels and maritime applications around the world. Suitable for a variety of marine applications and vessel types, the Orca offers both energy and high power.



The Corvus Orca ESS is ideal for applications that need both energy and a high amount of power, moving large amounts of energy at an inexpensive lifetime cost per kWh. The Corvus Orca is suitable for both hybrid electric and all-electric marine applications and for use in the Corvus BOB, an all-in-one, installation-ready battery room solution



Corvus Energy, the leader in marine Energy Storage Systems (ESS), has worked hard to achieve the highest standards of safety with its Orca??? ESS, and is the only supplier to carry DNV, Lloyd's Register, ABS and BV product Type Approvals.



Corvus Energy is the leading supplier of energy storage systems (ESS) for maritime, offshore and port applications. Corvus Energy offers a full portfolio of energy storage and fuel cell systems, suitable for almost every vessel type, providing power systems in the form of modular lithium-ion battery systems and Hydrogen PEM fuel cell systems.



Corvus Energy combined industry-leading research and development capabilities with its experience as the leading provider of marine ESS with the most installations worldwide to build the industry's safest, most reliable, high-performing and cost-effective ESS. Applications The Corvus Orca ESS is ideal for applications that need both energy



The Blue Whale design incorporates the unsurpassed safety features from the Corvus Orca ESS, the world's most installed marine ESS, along with additional design benefits, such as optimized energy density and a ???



Corvus Energy is the leading supplier of energy storage systems (ESS) for maritime, offshore and port applications. Corvus Energy offers a full portfolio of energy storage and fuel cell systems, suitable for almost every ???



In addition to ClassNK, Corvus" Orca ESS holds type-approvals from DNV, ABS, Rina, BV and KR class societies. The Orca system is a modular energy storage system that, according to the company and the sales record for the system, is suitable to a wide range of applications, including shore-based power systems, and vessel types.

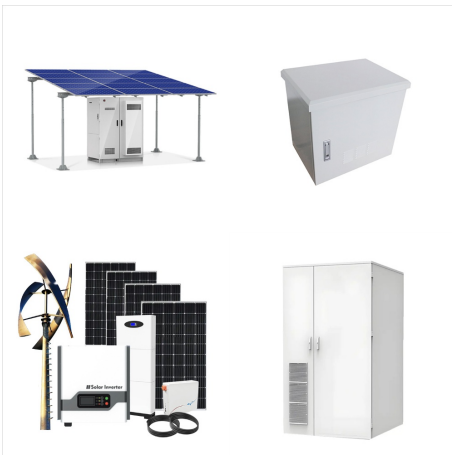


In addition to ClassNK, Corvus" Orca ESS holds type-approvals from DNV, ABS, Rina, BV and KR class societies. The Orca system is a modular energy storage system that, according to the company and the sales record ???





As the market leader for maritime ESS, Corvus Energy designed the Orca ESS product line based on experience from 50+ vessels currently utilizing a Corvus ESS, totaling over 35MWh installed and 1 million operating hours.



As the market leader for maritime ESS, Corvus Energy designed the Orca ESS product line based on experience from 50+ vessels currently utilizing a Corvus ESS, totaling over 35MWh installed and 1 million ???



The Blue Whale design incorporates the unsurpassed safety features from the Corvus Orca ESS, the world`s most installed marine ESS, along with additional design benefits, such as optimized energy density and a flexible, modular design architecture, that make it better equipped to meet the energy demands of large vessels.