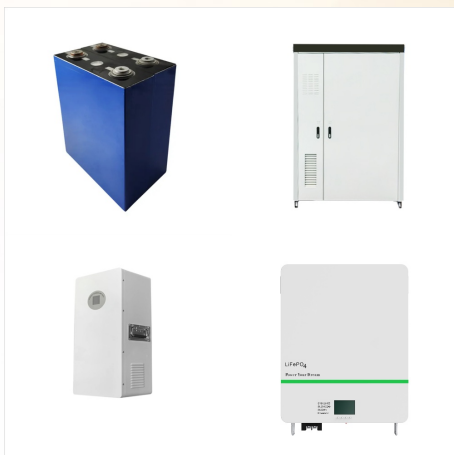




(This is a translation from the Japanese press release.) SSE Pacifico joins JCLP's "#1.5 Degrees" Campaign to enhance nationwide efforts to further support collective efforts across society, SSE Pacifico has announced a?|



The new entity is called SSE Pacifico, the UK group said on Monday. As part of the agreement, SSE Renewables will pay USD 208 million (EUR 179.3m) to take an 80% stake in an offshore wind development platform a?|



If you would like to know more about joining the motivated, talented and skilled people at SSE Pacifico, check our Careers page. Careers page. Media enquiry. To contact SSE Pacifico's media team please email Other enquiries. For other enquiries, please contact Location. Roppongi Grand Tower,



As part of the agreement, SSE Renewables will pay USD 208 million (EUR 179.3m) to take an 80% stake in an offshore wind development platform from Pacifico Energy. The amount includes USD 30 million of a?]



The combination of Pacifico Energy and SSE's knowledge is intended to help the joint ownership company progress with its 10GW early-stage development portfolio. Earlier this month, SSE Renewables announced plans to combine two proposed offshore wind farms in Scotland into one "super" project.



Japan Wind Energy 2023 (JWE), a forum for information exchange and networking on offshore wind, was held in Tokyo on 17 and 18 October. A lively exchange of views was held on accelerating offshore wind, and President of SSE Pacifico, Dai Karasawa, gave his opinion on the potential of supply chains in Japan and the need for international supply chains a?]



The targets are backed by a commitment to run regular offshore wind auctions for support. At SSE Pacifico, we are committed to developing, constructing and operating offshore wind projects in the seas around Japan, thereby helping Japan achieve its renewable energy targets. *1 The number includes exclusive economic zone.



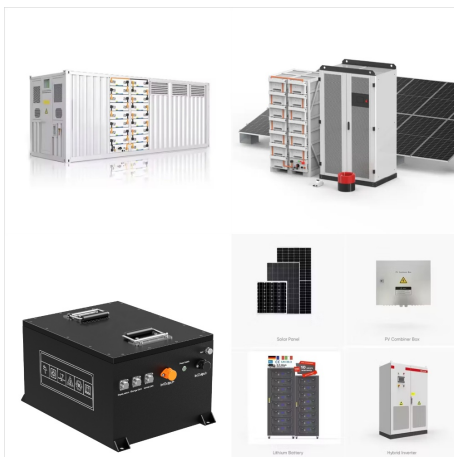
ssea??a?.a??a?GBPa?3a?<<a??a??a?|. ssea??a?.a??a?GBPa?3a?<<a??a??a?| /ceo a??a?!a?(R). a??a?!a?(R) a?<<a??a??a?| . a?? a??a??a??



Jointly established "SSE Pacifico K.K." with SSE Renewables, a leading British energy company; 2022. January Relocated head office to 33rd floor of Roppongi Grand Tower, Roppongi, Minato-ku, Tokyo April Commenced commercial operation of the a?|



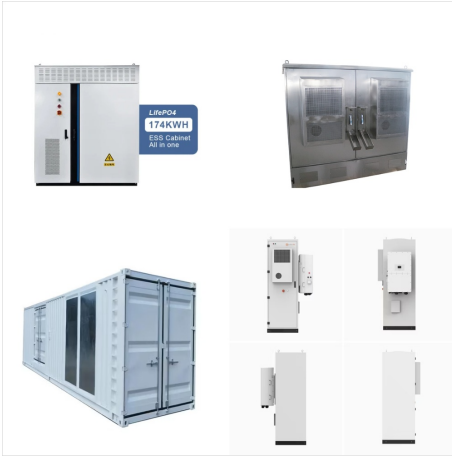
The new entity is called SSE Pacifico, the UK group said on Monday. As part of the agreement, SSE Renewables will pay USD 208 million (EUR 179.3m) to take an 80% stake in an offshore wind development platform from Pacifico Energy. The amount includes USD 30 million of deferred consideration subject to conditions.



SSE Pacifico and its consortium partners have secured public funding for a 30MW floating offshore wind demonstration project offshore Akita Prefecture, Japan. The project, which will be situated in waters up to 400m deep, will be one of the deepest offshore wind developments globally.



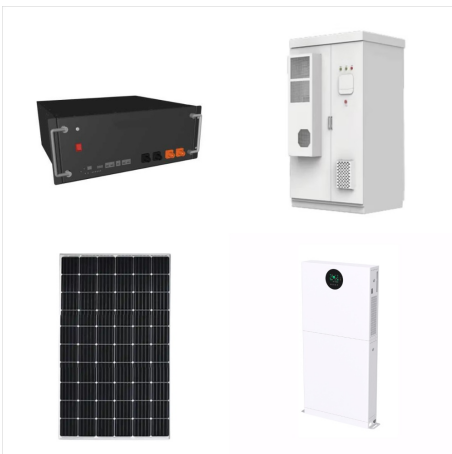
SSE Pacifico, which is 80% owned by SSE, is partnering with development consortium lead Marubeni Offshore Wind Development (MOWD) and other local partners in the successful bid. The demonstrator is the first consented project in which SSE will be involved in the emerging Japanese offshore wind market.



a??a??202110a??ssea??a?.a??a?GBPa?3a?<a?
<a??a??20237a??a??a??a??a??a?|a??a?,a??a?
1a??a??a??a??a??a?|a? 3/4 a??a??a? 3/4 a??a??a??
a?(R)a?aa? 1/4 a??a? 1/4
a?.a??a??a?(R)a??a??a??a??a??a?<a? 1/4
a??a?3a??a?JPYa? 1/4
a??a?(C)a?<a?<a??a??a??a??a??a?<a??a?aa?(R
)a??a??a?|a??a? 3/4 a??a??



Dai joined Pacifico Energy as COO in 2019 to oversee offshore wind power development, as well as construction management, asset management, and the financing of solar power stations while supporting Hiroki Matsuo, CEO of Pacifico Energy. When SSE Pacifico was established in October 2021, Dai was appointed as Executive Vice President and Chief



At SSE Pacifico, we aim to help realise Japan's renewables ambitions and be a significant part of the country's offshore wind plans during the decades ahead. SSE Pacifico is currently in the process of exploring potential offshore wind sites, engaging with communities and stakeholders including fisheries cooperatives.



SSE Renewables has closed the agreement to form a new joint ownership company, SSE Pacifico, which will pursue the development of offshore wind projects in Japan. The deal includes the acquisition by SSE Renewables a?|



ssea??a?.a??a?GBPa?3a?<<a??a??a?|. ssea??a?.a??a?GBPa?3a?<<a??a??a?| /ceo a??a?!a?(R). a??a?!a?(R) a?<<a??a??a?| . a?? a??a??a??



La region del Pacifico [1] es una de las seis regiones naturales de Colombia, la cual corresponde en su mayoria al "Choco biogeografico". Comprende casi la totalidad del departamento del Choco, y las zonas costeras de los a?|



ssea??a?.a??a?GBPa?3a?<<a??a??a?|. ssea??a?.a??a?GBPa?3a?<<a??a??a?| /ceo a??a?!a?(R). a??a?!a?(R) a?<a??a??a?| . a?? a??a??a??



ssea??a?.a??a?GBPa?3i 1/4 ?a??i 1/4 ? a??a??a??i 1/4 ?a??a??a??a??i 1/4 ?a??a??i 1/4 ?a??a??a??a??a??a?3a?3a? 1/2 a? 1/4 a?.a?ca? a??a??a?|a??a??a??a?<<a?(R)a? 1/4 a?>>i 1/4 ?nedoi 1/4 ?a??a??a??a??a??a?aa? 1/4 a?3



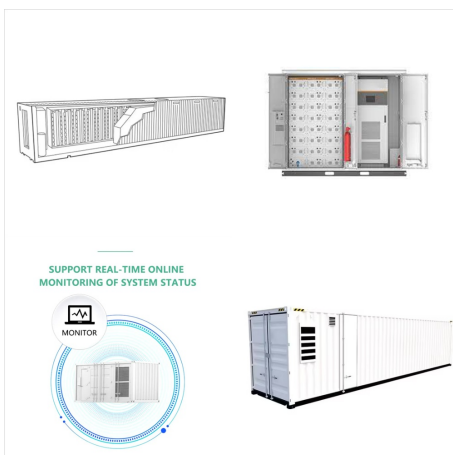
SSE Renewables has joined the Global Offshore Wind Alliance (GOWA), which brings together governments, the offshore wind industry, international organisations, and other stakeholders to accelerate the deployment of offshore wind power. (GWEC), and the Danish government. GOWA member countries include Australia, Belgium, Colombia, Denmark



ssea??a?.a??a?GBPa?3a??a??202110a??a??a?(
R)a?(R)a??a??a??a??a??a?<<a??a??a? 3/4
a??a??a??
ssea??a?.a??a?GBPa?3a??a??a??a??a?<<a?(R)a
? 1/4 a??a?<<a? 1/4 a??ssea?(R)a??a??a??sse
a?aa??a?JPYa? 1/4
a?ca??a?<<a?oa??a??a?(R)a??a??a?<<a?(R)a?
1/4
a??a??a??a??a?.a??a?GBPa?3a?>>a??a??a?,a?
1/4 a?<<a??a??



SSE Pacifico, the Japanese subsidiary of the UK energy group SSE, has announced plans to develop 6 GW of offshore wind capacity in Japan and to bid in the country's domestic offshore wind auctions. About half of the targeted capacity will be fixed-bottom type, while the other half will be floating. SSE Pacifico's pipeline notably includes a planned 500 MW a?|



En el corazón de la región del Pacífico colombiano, un ambicioso proyecto busca transformar la vida de las comunidades afrodescendientes de Bahía Málaga, en a?



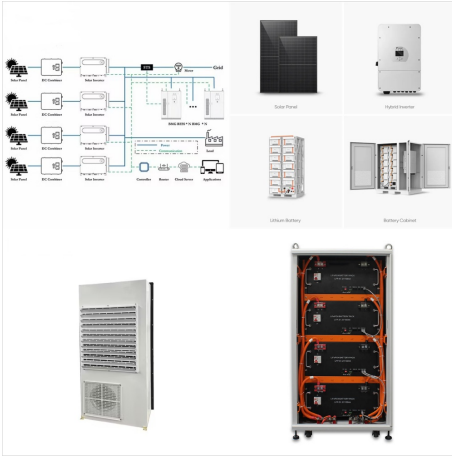
SSE Pacifico, which is 80% owned by SSE, is partnering with development consortium lead Marubeni Offshore Wind Development (MOWD) and other local partners in the successful bid. The demonstrator is the first a?|



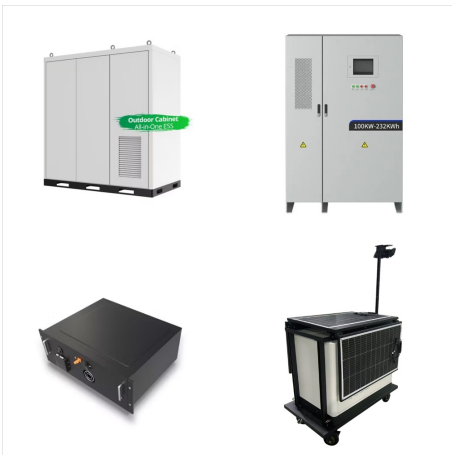
ssea??a?.a??a?GBPa?3a??a??202110a??a?(R)a?
?a??a??a??a??a?<a??a??a? 3/4
a??a??a??ssea??a?.a??a?GBPa?3a??a??a??a??
a??a??a??a?<a?(R)a? 1/4 a??a?<a? 1/4
a??ssea?(R)a??a??a??ssea?aa??a?JPYa? 1/4
a?ca??a?<a?oa??a??a?(R)a??a??a?<a?(R)a?
1/4 a??a??a??a??a?.a??a?GBPa?3



ssea??a?.a??a?GBPa?3a??a??202110a??a??a?(
R)a?(R)a??a??a??a??a??a?<a??a??a? 3/4
a??a??a??
ssea??a?.a??a?GBPa?3a??a??a??a??a?<a?(R)a
? 1/4 a??a?<a? 1/4 a??ssea?(R)a??a??a??sse
a?aa??a?JPYa? 1/4 a?ca??a?<a?oa??a??a?(R)
a?|



ssea??a?.a??a?GBPa?3a??a??202110a??a?(R)a?
 ?a??a??a??a??a?<<a??a??a? 3/4
 a??a??a??a??a??a??a??a??a??a??a?<<a?(R)a?
 1/4 a??a?<<a? 1/4
 a??ssea?(R)a??a??a??ssea?aa??a?JPYa? 1/4
 a?ca??a?<<a?oa??a??a?(R)a??a??a?<<a?(R)a?
 1/4
 a??a??a??a??a?.a??a?GBPa?3a?>>a??a??a?,a?
 1/4 a?<<a??a??a??a??a??



(This is a translation from the Japanese press release.) SSE Pacifico joins JCLP's "#1.5 Degrees" Campaign to enhance nationwide efforts to further support collective efforts across society, SSE Pacifico has announced its endorsement of the "#1.5 Degrees" campaign, organised by the Japan Climate Leaders" Partnership (JCLP). a??About the "#1.5 a?|