

Wide range of Electric Stainless Steel Butterfly Valves. 15.000 products in stock and same day shipment. The stainless steel valve housing gives it good chemical resistance allowing it to be used for liquids, gases, air, heating and hydraulic oils, fuels and other chemical applications.



The electric ball valve body itself is 304 stainless steel, while the internal diaphragm is EPDM. The ball is stainless steel while the ball seat is PTFE, making this a great valve to be used with many chemicals along with potable water. The actuator should preferably be installed upwards, especially when high degrees of vibrations are anticipated.

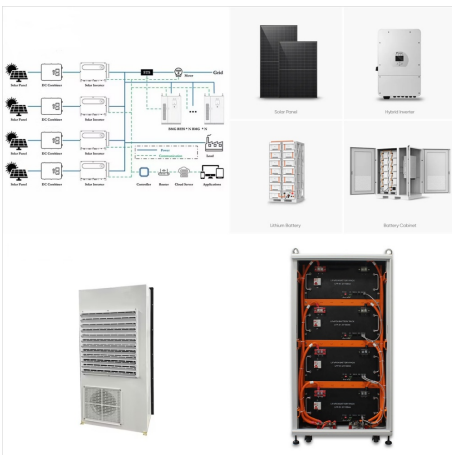


F electric actuated 2-piece stainless steel ball valves for on-off control of water, air, oil, and other media compatible with the materials of construction. Standard unit is power-to-open and power to close, stays in last known position with loss of power. On receipt of a continuous voltage signal, the motor runs and via a flat gear system rotates the ball valve. The ???

STAINLESS STEEL PHOTOVOLTAIC ELECTRIC VALVE



1??? Inch High Pressure Stainless Steel Electric Solenoid Steam 1/2??? Inch Stainless Electric Solenoid Process Valve Viton Seal \$ 70.97 Select options This product has multiple variants. The options may be chosen on the product page 2??? Inch ???



The SZW-15-24VDC is a 24 Volt DC, 2 way, Stainless Steel Solenoid Valve with 1/2" inch female NPT ports. This valve utilizes a Viton seal that can be used for liquid, water, gas, air and many other media types. This is a 2 way valve which means the valve will stay closed until power is applied, holding the position until the power state is changed.



The SZW-25-12VDC is a 12 Volt DC, 1" Stainless Steel, 2-way Solenoid Valve. This valve is compatible with a variety of media such as air, water, gas, diesel fuel, weak acids and glycol. The valve features a solid stainless steel body with a Viton seal. It is suitable for temperatures from 15°F up to 250°F.

STAINLESS STEEL PHOTOVOLTAIC ELECTRIC VALVE



A stainless steel electric wafer butterfly valve is a butterfly valve that is designed to clamp between two flanges without the need for the bolts to go through threaded holes on the body of the butterfly valve. It has a direct mounted IP67 electric actuator fixed to the valve which conducts its 90 degree turn (open/close).



Stainless steel (304 and 316 stainless steel) valves are more predominant in applications where corrosion resistance is a top priority. Stainless steel contains additional elements like chromium, nickel, and molybdenum, which increase the structural strength, chemical resistance, and corrosion resistance properties.

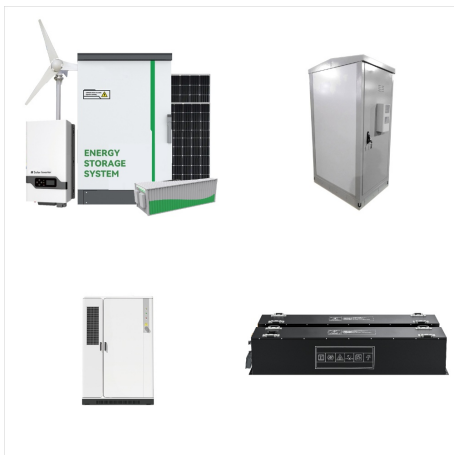


This 3/4" Stainless Steel Electric Ball Valve comes in a 3 Wire configuration. With this type of wiring setup the red/black stay connected to the positive/ground. The Green wire is the control wire that sends a signal to move the actuator. The green wire can be connected by means of a switch, relay or other type of controller.

STAINLESS STEEL PHOTOVOLTAIC ELECTRIC VALVE



An electric-actuated ball valve can be broken down into two main components, namely, the electric actuator (servo motor) and the ball valve. Electrically actuated stainless steel ball valves are used for a wide variety of aggressive, corrosive media. The material is highly wear-resistant, and the valves are often resistant to high temperatures

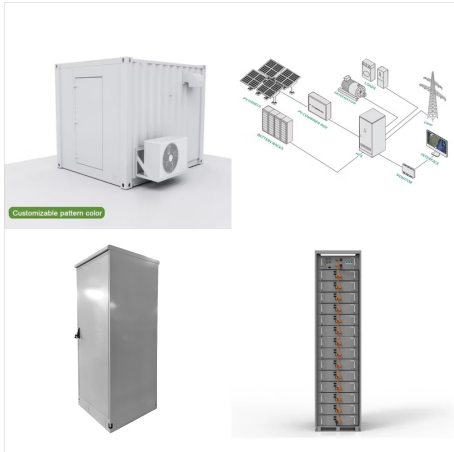


These valves are vital for many automated systems as it allows for the system to be shut off for routine maintenance. 2-Way Full Port Valves. The BV-2PC-20-S series is our Stainless Steel 2-piece manual ball valve line. As the name implies, these valves are composed of two pieces of Stainless Steel that meet at a single joint.



The electric ball valve body itself is 304 stainless steel, while the internal diaphragm is EPDM. The ball is stainless steel while the ball seat is PTFE, making this a great valve to be used with many chemicals along with potable ???

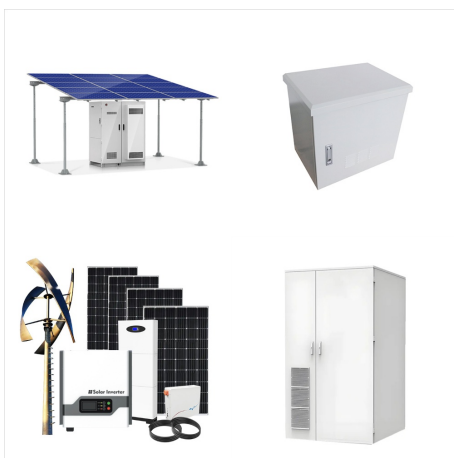
STAINLESS STEEL PHOTOVOLTAIC ELECTRIC VALVE



High-pressure stainless steel electric ball valves find applications in industries such as oil and gas, chemical processing, water treatment, and power generation, where reliable fluid control is essential. With their robust construction and advanced actuation capabilities, these valves provide efficient and dependable performance in high



Widely used in wineries and breweries, stainless steel is well suited to handle hot wort, made during the mashing process to produce beer. Stainless steel is commonly manufacturer in two grades: 304 and 316. Stainless Steel 304: ???

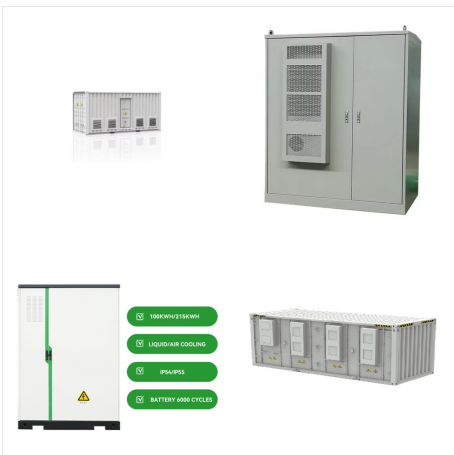


Photovoltaic electric valves are sophisticated devices that utilize solar energy to operate. They typically consist of a valve mechanism, usually made from durable stainless ???

STAINLESS STEEL PHOTOVOLTAIC ELECTRIC VALVE



The stainless steel ball valve is NSF certified, which means you can install it in the drinking water pipeline. Specifications U.S. Solid Model:
USS-MSV00008 (Normally-Open Version:
USS-MSV00072) (25-Pack Version:
USS-MSV00102) (New Type with Indicator:
USS-MBV00009)



Motorised stainless steel ball valves offer robust and reliable flow isolation and control in a wide range of compatible corrosive and non-corrosive chemical, foodstuffs, drinks, and other applications. These 2 piece construction full port ball valves are designed for actuation with an integrally cast ISO5211 actuator mounting platform to ensure accurate electric actuator ???



This specific electric ball valve is commonly used as a home emergency shut off valve. Free Shipping on all domestic orders over \$99. 800-983-8230 9:00AM-5:00PM (EST) There is also no water hammer, as the open/close response time is 4-5 seconds. The valve body and ball is 304 stainless steel, while the ball seat is PTFE and the seal is EPDM

STAINLESS STEEL PHOTOVOLTAIC ELECTRIC VALVE



Stainless Steel Ball Valve, 3 Piece 4 Bolt, Swing Out Body, Full Port, Threaded x Socket Weld Connection, Stainless Steel Ball and Stem, 1000 WOG T-SS-2001N-4B Stainless Steel Ball Valve, 3 Piece 4 Bolt Enclosed, Standard Port, Threaded ???



Valworx electric actuated stainless steel ball valve for positioning control of water, air, oil and other media compatible with the materials of construction. Electric actuators feature visual and electrical valve position indication, manual override and weatherproof enclosures. Advantages of electric actuated ball valves over other type valves may include: higher flows, higher pressures



The stainless steel photovoltaic electric valve offers numerous advantages over traditional valves. Its self-powering capability reduces dependency on fossil fuels and grid electricity, thereby ???

STAINLESS STEEL PHOTOVOLTAIC ELECTRIC VALVE



EAS SERIES - 2 PC High Pressure Stainless Steel Ball Valve - Electric Actuator. Larger Image. The EAS Series of electric automated stainless-steel ball valves are designed for high-pressure applications. This series includes our DE, MA, and JE electric actuators. They can be ordered in pre-sized and preassembled automation packages to suit your



The Stainless Steel Photovoltaic Electric Valve operates seamlessly, using the electrical power generated by the photovoltaic cells to control the flow of fluids. The valve can be easily ???



This 3/4" Stainless Steel Electric Ball Valve comes in a 3 Wire configuration. With this type of wiring setup the red/black stay connected to the positive/ground. The Green wire is the control wire that sends a signal to move the actuator. The ???

STAINLESS STEEL PHOTOVOLTAIC ELECTRIC VALVE



The BV-3PC-20-S series is our Stainless Steel 3-piece manual ball valve line. The larger ball ensures there is no decrease in the diameter of the opening also called "Full Bore" or "Full Port". All our Atlantic Valve manual ball valves come standard with PTFE seals, also known as Teflon, which along with the lead-free stainless-steel body make this valve excellent for anything from



Valworx 3-Way stainless steel full bore ball valves are used as diverter or selector valves. Available with T-port or L-port flow configurations. Reliable and easy to use, just a quarter turn of the handle diverts flow from one outlet port to the other. 1/4" to 2".



Solar Powered Smart Automatic ball valves could be a great addition to farm automation systems where remote or off-grid operation is necessary. There is no external power is required to ???

STAINLESS STEEL PHOTOVOLTAIC ELECTRIC VALVE



This industrial grade steam valve uses an Atlantic Valve's Solenoid Coils to control the opening and closing of the diaphragm at rapid speeds (under 1 second). This valve is designed to be compatible with steam. Using high quality PTFE seals, and stainless-steel components this valve has a higher resistance to temperature and pressure.



The DELCO Miniature Timer Control Motorized Ball Valve is constructed from high-quality brass and stainless steel, and is available in gray and black colors. These valves use an electric actuator to rotate a ball with a hole through it, allowing for precise control of fluid flow. The integrated timer allows users to schedule the opening and



This is a 3/4" Stainless Steel motorized ball valve with a stainless steel ball driven by metal gears, a PTFE ball seat and an EPDM seal. Benefits over a solenoid valve include it being bi-directional (capable of flowing in either direction), no water hammer (long close time of 4-5 seconds to fully open/close), no coil burn-out (negligible power required to hold position), and full flow

STAINLESS STEEL PHOTOVOLTAIC ELECTRIC VALVE



Stainless Steel Ball Valve with Electric Actuator .
Electric Actuator Valves in SS304 or SS316 is used for food-grade applications. It is available in various voltage options like 12V DC, 24V DC or 220V AC. It is available in ON/OFF or Modulating Function. It is manufactured at our factory at Chennai Tamil Nadu, India.



WIC Valve 2SCW series 2-way normally closed stainless steel electric solenoid process valve is to control On/Off of air, inert gas, liquid and vacuum. This industrial zero differential electric solenoid valve has one 1.5??? inch NPT inlet and one 1.5??? inch NPT outlet port. 2SCW Series Stainless Steel Electric Solenoid Valve Component