

What are the brightest stars in the night sky?

You'll see some of the brightest stars in the night sky in the famous winter constellations: Rigel and Betelgeuse in Orion (as well as Orion's belt rising on its side), Aldebaran in Taurus, Capella in Auriga, Pollux and Castor in Gemini, Procyon in Canis Minor and Sirius in Canis Major.

Is September a good month to see a star?

(Image credit: Jamie Carter/Starry Night) September is the perfect month to look for Fomalhaut, the "autumn star," from mid-northern latitudes. It's the 18th brightest star in the night sky, but one generally associated with the southern hemisphere.

What can you see tonight's Celestial Wonders?

Tonight's celestial wonders are ready to amaze and inspire. Here's a brief list of what you can explore: Explore sunspots, flares, and prominences, revealing solar dynamics and activity. For safe observation, use solar filters or telescopes to protect your eyes.

Which planets are visible at night?

Saturn's visible all night. Jupiter and Mars rise in the couple of hours after midnight and are visible in the southeast before sunrise. September 1-7 - If you're in the Northern Hemisphere, you can spot Mercury this week during morning twilight if you can find an unobstructed view toward the east. It appears low in the east just before dawn.

What is the 7th brightest star?

Rigel, the seventh brightest star, is a blue supergiant in the constellation Orion. It is one of the most massive and luminous stars visible to the naked eye. Procyon, the eighth brightest star, is a binary system in the constellation Canis Minor. Its name means 'before the dog' as it rises just before Sirius, the 'Dog Star'.

What is the brightest star in Twilight?

(Image credit: Jamie Carter/Starry Night) During evening twilight, a half-moon will shine brightly in the south. Look to its right, and you'll see the red supergiant star Antares, the brightest in the constellation Scorpius, one of the 13 zodiac constellations. It's prominent at this time of year from both hemispheres.



The Star Atlas shows a 360 degree view of the night sky for any given location and time up to an elevation of 60 degrees. The application shows stars down to a magnitude of 5 along with all the planets. You can search for a particular star or planet by typing the name in the search box and pressing enter, if it is visible then the sky will



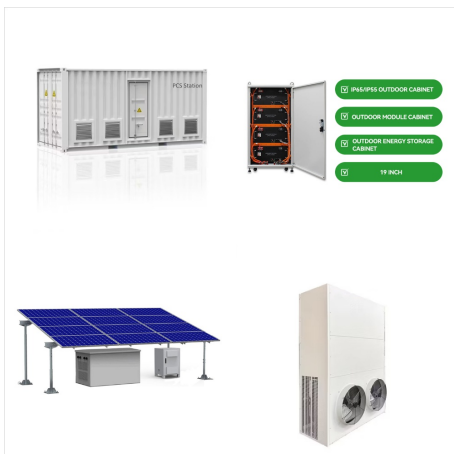
Discover celestial objects visible tonight from your current location. Our guide automatically shows planets, stars, nebulae, and spacecraft flyovers you can see right now. Explore the night sky with up-to-date data specific to where you are! Check out the five brightest stars currently visible in the night sky. Sirius Star. ??? 22:54. ???



Neptune is visible during most of the night, but it is best viewed in the late evening hours after sunset. Very faint, use binoculars. Mon, Oct 28 ???4:46 am. Oct 27, 2024. Check the best dates and timings to see shooting stars from your ???



Neptune is visible during most of the night, but it is best viewed in the late evening hours after sunset. Very faint, use binoculars. Mon, Oct 28 ???4:46 am. Oct 27, 2024. Check the best dates and timings to see shooting stars from your location. What Is a Conjunction? Two astronomical bodies appear to meet in the sky???but it's an illusion.



The interactive tool displays sunrise and sunset times, morning and evening twilight times, moonrise and moonset times, the Moon's phase, a list of naked-eye planets visible in the evening and morning skies, rise and set times for each of these planets, and more. How to Use the Astronomical Almanac to Find What Planets Are Visible Tonight



Uranus is visible during most of the night, but it is best viewed in the early morning hours and until sunrise. You may need binoculars. Fri, Oct 25 ???6:27 pm. Oct 25, 2024. Check the best dates and timings to see shooting stars from your location. What Is a Conjunction? Two astronomical bodies appear to meet in the sky???but it's an



A resource to help you plan tonight's observation of astronomical events and Solar System objects visible from Seattle, United States. we will use Greenwich as a default, but visibility information and star map automatic orientation might be off. Autodetect Location Set Location Manually Don't Set Location



Jupiter is visible during most of the night, but it is best viewed in the early morning hours and until sunrise. Wed, Nov 6 9:17 pm. Nov 6, 2024. Check the best dates and timings to see shooting stars from your location. What Is a Conjunction? Two astronomical bodies appear to meet in the skybut it's an illusion.



Discover celestial objects visible tonight from your current location. Our guide automatically shows planets, stars, nebulae, and spacecraft flyovers you can see right now. Explore the night sky with up-to-date data specific to where you are!





Our Bright Stars Calculator tells you all about the visible stars in the night sky???tonight or a date in the future???all customized to the location that you select! We cover every day from 1970 through 2036. What Our Bright Stars Calculator Lists. The time of a star's rising on any date; The time and altitude of a star as it crosses the



Neptune is visible during most of the night, but it is best viewed in the late evening hours after sunset. Very faint, use binoculars. Sat, Oct 26 ???4:18 am. Oct 25, 2024. Check the best dates and timings to see shooting stars from your location. What Is a Conjunction? Two astronomical bodies appear to meet in the sky???but it's an illusion.



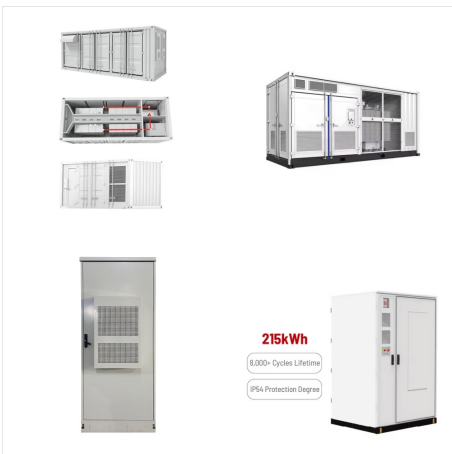
? Mirach, the central star of the chain, is well-known to stargazers because it can be used to find the Andromeda Galaxy (Messier 31) and the Triangulum Galaxy (Messier 33). The galaxies appear on opposite sides of the ???



A resource to help you plan tonight's observation of astronomical events and Solar System objects visible from London, United Kingdom. we will use Greenwich as a default, but visibility information and star map automatic orientation might be off. Autodetect Location Set Location Manually Don't Set Location



? Last week's theme, Halloween Nightmares Night, saw the seven remaining couples deliver standout routines to spooky tunes. The episode also brought back the dance-offs, where pairs faced off head



Naked-eyed observers usually spot six stars at a glimpse. However, the longer you look, the more stars you see, given an acute vision and clear skies without light pollution. (mag -12.5) and the Pleiades (mag 1.2) will be 0°6" apart. The objects will be visible all night long, rising around sunset, culminating at midnight, and setting



An online planetarium from In-The-Sky , showing what stars and planets you'll be able to see in the night sky on any given day of the year. In-The-Sky . Guides to the night sky. Location: Virginia Beach (36.85°N; 75.98°W) Online Planetarium. Home Link to this star chart. You can link directly to this view of the sky with this URL:



Discover the brightest stars visible in the night sky tonight. Learn the best times and directions for stargazing and spotting these stunning celestial objects with the naked eye. Sky Tonight. ST. VA, US 36.7°/-78.4° GMT -5 Waxing 18:09 - 05:



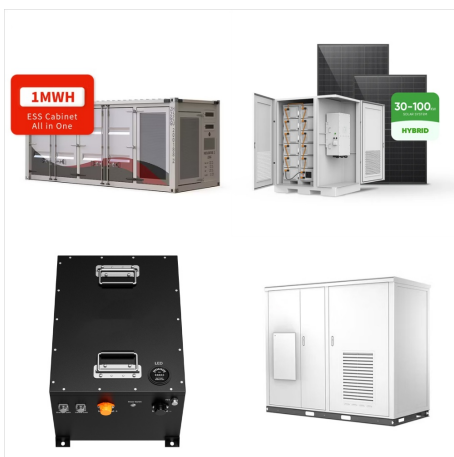
A resource to help you plan tonight's observation of astronomical events and Solar System objects visible from Chicago, United States. we will use Greenwich as a default, but visibility information and star map automatic orientation might be off. Autodetect Location Set Location Manually Don't Set Location



Discover celestial objects visible tonight from your current location. Our guide automatically shows planets, stars, nebulae, and spacecraft flyovers you can see right now. It is one of the most massive and luminous stars visible to the naked eye. More about Rigel. Procyon Star. ??? ???



The interactive tool displays sunrise and sunset times, morning and evening twilight times, moonrise and moonset times, the Moon's phase, a list of naked-eye planets visible in the evening and morning skies, rise and set ???



All month ??? Planet visibility report: Look for Venus low in the west just after sunset; Saturn can be seen toward the southeast as soon as it gets dark; Mars rises around midnight; and Jupiter rises in the first half of the night (rising ???





Discover celestial objects visible tonight from your current location. Our guide automatically shows planets, stars, nebulae, and spacecraft flyovers you can see right now. Explore the night sky with up-to-date data specific to where you are! Check out the five brightest stars currently visible in the night sky. Sirius Star. ??? 22:39. ???



Jupiter is visible during most of the night, but it is best viewed in the early morning hours and until sunrise. Wed, Nov 6 ???6:39 pm. Nov 6, 2024. Check the best dates and timings to see shooting stars from your location. What Is a Conjunction? Two astronomical bodies appear to meet in the sky???but it's an illusion.



Jupiter is visible during most of the night, but it is best viewed in the early morning hours and until sunrise. Tue, Nov 5 ???8:01 pm. Nov 5, 2024. Check the best dates and timings to see shooting stars from your location. What Is a Conjunction? Two astronomical bodies appear to meet in the sky???but it's an illusion.



A resource to help you plan tonight's observation of astronomical events and Solar System objects visible from New Delhi, India. we will use Greenwich as a default, but visibility information and star map automatic orientation might be off. Autodetect Location Set Location Manually Don't Set Location



Discover celestial objects visible tonight from your current location. Our guide automatically shows planets, stars, nebulae, and spacecraft flyovers you can see right now. Explore the night sky with up-to-date data specific to where you are! Check out the five brightest stars currently visible in the night sky. Sirius Star. ??? 23:38. ???



See this week's sky at a glance with observing tips and maps to guide you to the night sky. Don't miss out on comets, meteors, eclipses, and more! Update Location; SUNSET: The two brightest stars of summer balance across the zenith. Arcturus and Vega represent the two commonest spectral types, and colors, of all the naked-eye stars in the sky.