



??



Shenzhen Ateko Photoelectricity Co., Ltd. which was founded in the year 2002, is a professional R & D, production and sales of LED power supply, TV main board, projectors of the national high-tech enterprises. The company has a high-quality staff and a high level of management system, the existing staff of more than 800 people, including



??

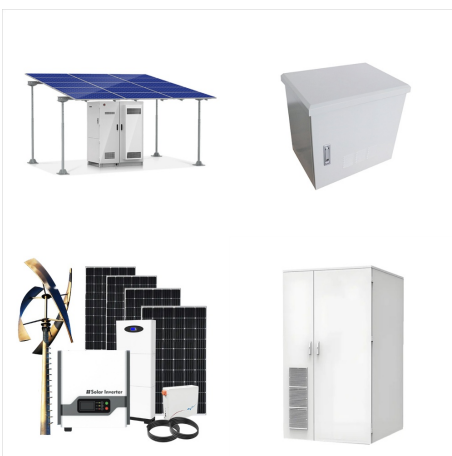
SUDAN SHENZHEN ATEKO PHOTOELECTRICITY CO LTD



About Shenzhen Top-Tech Industrial Co.,Ltd:
Shenzhen Top-Tech Industrial Co.,Ltd: A variety of TV main board, led driver and main board of projectors are sold. Certified quality guarantee and low price. Reliable manufacturer and supplier in China. Fast shipping, safe online payments.
Products: electronic. Phone: 15538272582. Fax: +86-755-26740494



SHENZHEN ATEKO CO.LTD based in Shenzhen, China established in 2004: Contact Details, Phone Number, Email, Address, Website, Location, Contact Number. Write a Review for SHENZHEN ATEKO CO.LTD. Ask questions the ChinaYello community.



Shenzhen Decenta Technology Co., LTD, founded on 2013, has a R& D team of over 100 people, a factory of (Dongguan Decenta Electronic Technology Co., Ltd.) more than 300 people and its own manufactory with a sizable team of 500 employees.. Decenta is committed to providing X86-based and ARM-based embedded hardware solutions, and manufacturing the intelligent ???



Detalles del vendedor - SHENZHEN ATEKO
PHOTOELECTRICITY CO.,LTD SHENZHEN
ATEKO PHOTOELECTRICITY CO.,LTD 4-5F,E1
Building,TCL International E City,No.1001
Zhongshanyuan Road,Nanshan District,Shenzhen
SHENZHEN GUANGDONG 518052 CN



Analyzing SHENZHEN ATEKO
PHOTOELECTRICITY CO.,LTD trade trends helps
assess supply stability, demand trends, peak and
off-season patterns, aiding procurement decisions
and cycle planning. Growing trade volume reflects
supplier competitiveness, making them a potential
long-term partner. This data supports supply chain
optimization and risk ???



? 1/4 ? 2007-02-07,,3000
,9144030079797694xm,??? 35b505,,? 1/4 ?

SUDAN SHENZHEN ATEKO PHOTOELECTRICITY CO LTD



MAC Prefix Vendor / Company Address Country;
 00-CB-B4 / 00CBB4: SHENZHEN ATEKO
 PHOTOELECTRICITY CO.,LTD: 4-5F,E1
 Building,TCL International E City,No.1001
 Zhongshanyuan Road,Nanshan District,Shenzhen
 SHENZHEN GUANGDONG 518052



See Shen Zhen Ateko Photo Electricity Co., Ltd. 's products and customers Thousands of companies like you use Panjiva to research suppliers and competitors. Request a Demo. Easy access to trade data. Explore trading relationships hidden in ???



Shenzhen Pengji Photoelectricity Ltd, founded in 2003, is a high-tech company focused on liquid crystal display and electronic touch screens. Through years of development, it has grown up into a high-tech LCD company that integrate R& D, design, production, sale and service together. Shenzhen PengJi Photoelectricity Co., Ltd. Address : Unit

SUDAN SHENZHEN ATEKO PHOTOELECTRICITY CO LTD



LED,,,? 1/4 ? . ,,:400-000-2314.:info@lightslighting
;:QQ:1511153,:zdapan (C)2001-2023? 1/4 ?LED.



Shenzhen Pengde Photoelectricity Co., Ltd.
Shenzhen Pengde Photoelectricity Co., Ltd. was
founded in August 2012 and is located in Shiyan
Town, Shenzhen. It is a national high-tech
enterprise specializing in the research,
development, production and sales of screen
protectors for electronic products. The company has
accumulated rich experience



??u???????????????????? 3/4 ????? 3/4
??u?????u?????? - shenzhen ateko
photoelectricity co.,ltd SHENZHEN ATEKO
PHOTOELECTRICITY CO.,LTD 4-5F,E1
Building,TCL International E City,No.1001
Zhongshanyuan Road,Nanshan District,Shenzhen
SHENZHEN GUANGDONG 518052 CN

SUDAN SHENZHEN ATEKO PHOTOELECTRICITY CO LTD



Shenzhen Ateko Photoelectricity Co. Ltd. is headquartered in China Guangdong Sheng. Shenzhen Ateko Photoelectricity Co. Ltd. was founded in 2007. Shenzhen Ateko Photoelectricity Co. Ltd. has a total of 44 patents . Login to view all basic info. Data Snapshot. 44. Patent. High Related Markets.