



SUNI Smart Energy Limited was delighted to have the privilege of hosting a significant side event during The Africa Climate Summit, titled "Accelerating Access to Abundant Affordable Clean Energy in Africa" on 4th of September 2023 at the Kenyatta International Convention Centre (KICC) in Nairobi, Kenya at Kenya House Pavilion. (caption text) In his opening [???



SUNI SMART ENERGY PTE. LTD. (UEN ID 202100460G) is a corporate entity registered with Accounting and Corporate Regulatory Authority. The incorporation date is January 4, 2021. The entity status is Live Company. The address is 60 Paya Lebar Road, #08-55, Paya Lebar Square, Singapore 409051.



Suni Smart Energy Limited 2024 - Present less than a year. CAS CONSULTANTS LTD 6 years 4 months Environment Social and Governance Manager CAS CONSULTANTS LTD 2019 - Present 5 years. Kenya Passionate and results-oriented ESG expert with a proven track record in driving sustainability initiatives and fostering corporate responsibility.



At SUNI, we are passionate about environmental conservation and sustainable energy, and we are dedicated to making a positive impact to the world. Company. SUNI Smart Energy Limited is leading the fight against climate change by supporting the development of high-quality & nature-based carbon credits in Africa. Our team comprises Global



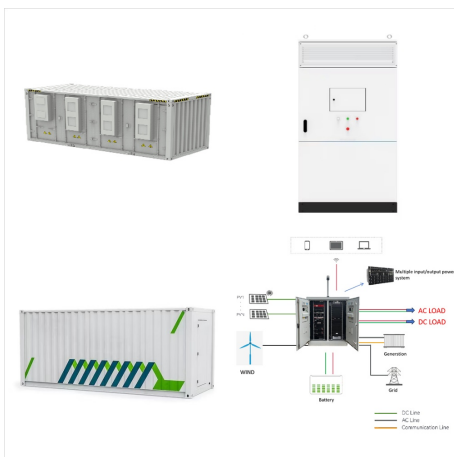
SUNI Smart Energy Limited is leading the fight against climate change by supporting the development of high-quality & nature-based carbon credits in Africa. Our team comprises Global experts in Environmental Conservation, Climate Change, Carbon Neutrality, Carbon markets, ESG, and capital markets.



Carbon Specialist | GIS/Remote sensing | Environment | Climate Change | Carbon accounting  
? Main objective is to apply my skills, attitudes and knowledge to serve diligently in the challenging and dynamic working environment while steering the attainment of the organizations mission and vision and transform the society at large ? Experience: Suni Smart Energy Limited ? Education: ???



The Maragoli Hills Community Forest Association organized a momentous event at Inyanza Primary School to spearhead the restoration of the Maragoli Hills. The primary objective of this event was to raise awareness about the critical impacts of climate change and the urgent need to restore the deforested Maragoli Hills. In addition, it aimed to promote [??]



In recent years, renewable energy has gained attention, and Africa is no exception. The continent offers enormous prospects for the development of renewable energy due to its abundance of natural resources, which include sun, wind, water, and geothermal energy. Africa is a continent with a population of more than 1.3 billion people that is rapidly [??]



At Suni Smart Energy, we are dedicated to promoting sustainability and environmental consciousness. We believe in the power of collective efforts to create a greener, more sustainable future. Recently, we had the privilege of participating in a tree planting initiative at Wathia Primary School, where we donated seedlings and shared our passion for a sustainable [??]



Climate change, Carbon asset development, Sustainability, Climate finance, GIS & Remote Sensing, Mastercard Foundation Scholar ? Experience: Suni Smart Energy Limited ? Education: The University of Edinburgh ? Location: Nairobi County ? 367 connections on LinkedIn. View Emelda Oyare's profile on LinkedIn, a professional community of 1 billion members.



Solar energy is becoming a more common way to power our homes, companies, and communities. It is a renewable resource with the potential to supply the world's energy demands for hundreds of years. SUNI Smart Energy Limited is leading the fight against climate change by supporting the development of high-quality & nature-based carbon

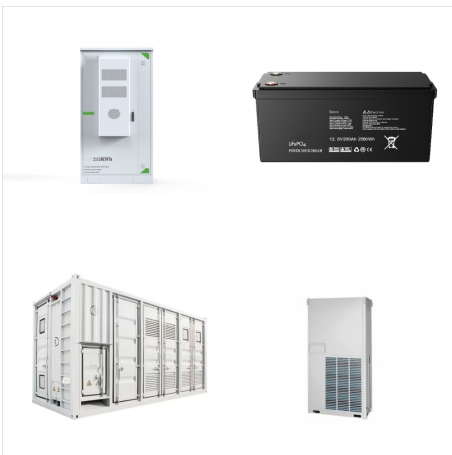


At SUNI, we are passionate about environmental conservation and sustainable energy, and we are dedicated to making a positive impact to the world. Company. SUNI Smart Energy Limited is leading the fight against climate change by supporting the development of high-quality & nature-based carbon credits in Africa. Our team comprises Global

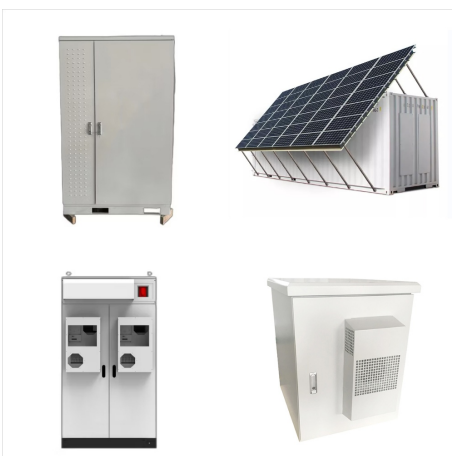




Suni Smart Energy Limited Services for Renewable Energy Power Africa, Green Africa. Follow View all 14 employees Report this company About us Website <https://> External link for Suni Smart Energy Limited. Industry Services for Renewable Energy



At SUNI, we are passionate about environmental conservation and sustainable energy, and we are dedicated to making a positive impact to the world. Company Home Page About Suni Latest Articles Careers Contact Information +254(0)792250992 [info@sunismartenergy](mailto:info@sunismartenergy) X LinkedIn Facebook Latest News Importance of Carbon Credits April 25, 2023 Carbon Emissions ???



During the Africa Climate Summit, Suni Smart Energy showcased its pivotal role in advancing carbon solutions, reflecting our commitment to fostering sustainable environmental practices and driving the transition to a low-carbon economy. ???



Suni Smart Energy. Project Brief. The Proposed project has two components: a. Support the development and trade of jurisdictional carbon credits nationwide under the programme called Reduce Emissions from Deforestation and Degradation in Kenya and the Lowering emissions through Accelerated Financing Coalition; and b. Development and trade of



SUNI Smart Energy Limited is leading the fight against climate change by supporting the development of high-quality & nature-based carbon credits in Africa. Our team comprises Global experts in Environmental Conservation, Climate Change, Carbon Neutrality, Carbon markets, ESG, and capital markets.



Data Analyst ? Passionate and result oriented Monitoring and Evaluation officer with experience in performing quality control and reporting. Comprehensive experience supporting and working with both profit and non-profit agricultural set-ups, start ups and established organisations in IT, research and business operations. Highly adept at working within systems and the ability to ???