



What is the French Southern Territories?

The territory is sometimes referred to as the French Southern Lands (French: Terres australes françaises) or the French Southern Territories, usually to emphasize non-recognition of French sovereignty over Adélie Land as part of the Antarctic Treaty System. The entire territory has no known permanently settled inhabitants.

Why are the French Southern & Antarctic Lands subject to an original form of governance?

These characteristics explain why these territories are subject to an original form of governance. The French Southern and Antarctic Lands include uninhabited territories in the Indian and Southern Oceans. Image: TAAF

What is the French Southern Territories nature reserve?

In 2006, the French Southern Territories Nature Reserve was created around the Crozet archipelago and the Kerguelen, Saint-Paul and Amsterdam islands. This reserve, which by 2022 will cover an area of 1.6 million km², is one of the largest marine protected areas in the world and has been a UNESCO World Heritage Site since 2019.

Are there trees in the French Southern Lands?

Because of their isolation and subpolar location, the French Southern Lands are relatively depauperate of vegetation, with both Saint-Paul and Crozet having no native tree or shrub species. However, eight of the 36 higher plant species are endemic.

Does France have territorial sovereignty over the Éparses Islands?

Although France's claim to the three austral lands (Kerguelen, Saint-Paul and Amsterdam and Crozet) is no longer contested, it is facing two major challenges to its claim to territorial sovereignty over the Éparses islands.

What does France do to protect Antarctica?

France closely follows all proposals and developments that could undermine regulations stemming from the Treaty, Madrid Protocol or the CCAMLR. With its partners in the ATCM, the CEP and the CCAMLR, France also seeks to strengthen mechanisms to protect Antarctica's environment and ecosystems.

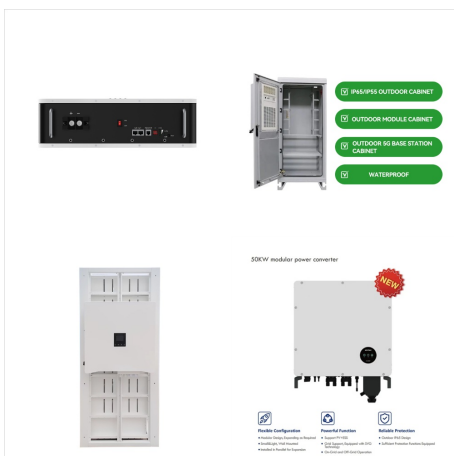
SUSTENTATOR COM FRENCH SOUTHERN TERRITORIES



FRENCH SOUTHERN AND ANTARCTIC TERRITORIES AIR POST STAMPS "Explorer and Seal" by Tremois, with Label 1985 30FR Sailing Ships, Ropes, Flora & Fauna - Pair + Label 1985 2 FR ALUESAND 12.80 V Antarctic Atmospheric Research 1986 4.60FR 14FR Sea Gulls 1986 Jean Charcot - Pair + Label 1986 2.10 FR ALUESAND 14 V



The administrative body for the five districts of the French Southern and Antarctic Territories; offices based in Saint Pierre, La Réunion and Paris.
Thomas, ornitho aux Kerguelen A blog by Thomas Gouello, VCAT ornithologist (mission 61, Nov. 2010 - ???



French Southern Territories. ISO alpha-2 code . TF. ISO alpha-3 code . ATF. ISO numeric-3 code . 260. Continent . Antarctica. Pagination. S'abonner ? French Southern Territories Informations pratiques. Mes activités. Mon compte. Abonnement Site; Billetterie; Vous ne voulez rien manquer ?

SUSTENTATOR COM FRENCH SOUTHERN TERRITORIES



The French Southern and Antarctic Lands are an overseas territory of France that consist of the following: ??? Ad?lie Land (Terre Ad?lie): This is the French claim on the continent of Antarctica.??? Crozet Islands (?les Crozet): A group of islands in the southern Indian Ocean, located south of Madagascar.



The Government of the French Republic, referring to Article 24, paragraph (1), of the Paris Convention for the Protection of Industrial Property, declares that the said Convention shall be applicable to the territory of the French Republic in Europe, to the departments of Guyane, Guadeloupe, Martinique and Reunion, and to the overseas



Time Zone Currently Being Used in French Southern Territories. Offset Time Zone Abbreviation & Name Example City Current Time; UTC +5: TFT: French Southern and Antarctic Time: Amsterdam Island: Sun, 8:36:31 pm: French Southern Territories observes French Southern and Antarctic Time all year.

SUSTENTATOR COM FRENCH SOUTHERN TERRITORIES



, Jan 1 1971 issue - fishes (1971 French Southern & Antarctic Territories) (8 stamps) - 5fr: multi: Chaenichthys rhinoceratus - 10fr: multi: Notothenia rossii - 20fr: multi: Notothenia coriiceps - 22fr: multi: Trematomus hansonii - 25fr: Notothenia macrocephala - 30fr: Notothenia cyanobranchia - 35fr:



Cities in French Southern Territories. Travelmath helps you find cities in any state or country. You can use it to look for nearby towns and suburbs if you live in a metropolis area, or you can search for cities near another city, or any airport, zip code, or tourist landmark. You'll get a map of the local cities, including information on each



The ???????<< emoji depicts the flag of the French Southern Territories, a group of small islands in the southern Indian Ocean. The flag features a blue field with the French tricolor in the upper left corner and the letters "TAAF" (Terres australes et antarctiques fran?aises) in ???

SUSTENTATOR COM FRENCH SOUTHERN TERRITORIES



The French Southern and Antarctic Lands, in full the Territory of the French Southern and Antarctic Lands is an overseas territory of France. It consists of: Kerguelen, a group of volcanic islands in the southern Indian Ocean, southeast of Africa, approximately equidistant between Africa, Antarctica and Australia; St. Paul and Amsterdam islands



Time Zone Currently Being Used in French Southern Territories. Offset Time Zone Abbreviation & Name Example City Current Time; UTC +5: TFT: French Southern and Antarctic Time: Amsterdam Island: Sun, 8:36:31 pm: French ???



Officially, Ad?lie also belongs to this overseas territory as a French territorial claim over Antarctica, but due to the Antarctic Treaty, all those territorial claims are frozen. Since 2007, the ?les ?pares, some islands scattered throughout the Indian Ocean, have been incorporated into the French Southern and Antarctic Territories.

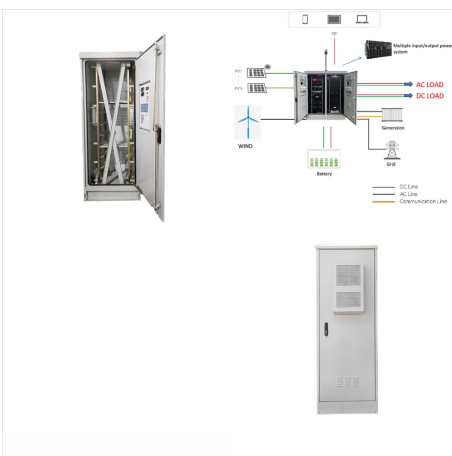
SUSTENTATOR COM FRENCH SOUTHERN TERRITORIES



The territory is sometimes referred to as the French Southern Lands (French: Terres australes fran?aises) or the French Southern Territories, [7] usually to emphasize non-recognition of French sovereignty over Ad?lie Land as part of the Antarctic Treaty System. [5] The entire territory has no known permanently settled inhabitants. Approximately 150 (in the winter) to 310 (in the ???



Overseas departments and regions: Guadeloupe ? Martinique ? French Guiana ? R?union ? Mayotte
Overseas collectivities: Saint Barth?lemy ? Saint-Martin ? Saint Pierre and Miquelon ? French Polynesia ? Wallis and Futuna ? French Southern and Antarctic Lands + Sui generis territories: New Caledonia ? Clipperton Island +



Sui generis territories: Media in category "French Southern and Antarctic Lands" The following 3 files are in this category, out of 3 total. Lada des Terres Australes.jpg 2,984 x 2,984; 6.58 MB. Plaque d'immatriculation fran?aise avec le blason des TAAF 984.jpg 3,016 x 4,032; 3.55 MB.

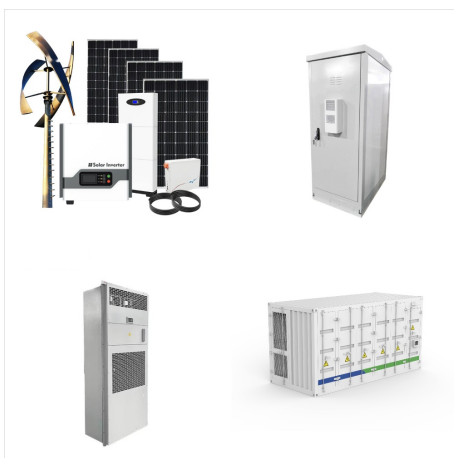
SUSTENTATOR COM FRENCH SOUTHERN TERRITORIES



EU27 Merchandise trade with French Southern Territories by product (2023) - SITC (UN) & AMA/NAMA (WTO) Source Eurostat Trade in services French Southern Territories with World Source World Trade Organization EU27 with French Southern Territories Source Eurostat Foreign Direct Investment EU27 FDI Flows with French Southern Territories Source



Distance from French Southern Territories to Saint Vincent and the Grenadines: 14,001 km: 8,700 miles: Distance from French Southern Territories to Venezuela: 13,723 km: 8,527 miles: Distance from French Southern Territories to British Virgin Islands: 14,680 km: 9,122 miles: Distance from French Southern Territories to U.S. Virgin Islands



French Southern Territories is an Antarctic country covering 7,747.00 km² of which 98.98% is water and 80.00 km² is land. The area excludes Adelie Land claim of about 500,000 sq km in Antarctica as that is not recognized by the United States. and about the same size as California. Its geographic coordinates are 37 50 S, 77 32 E and Port-aux-Francais is ???

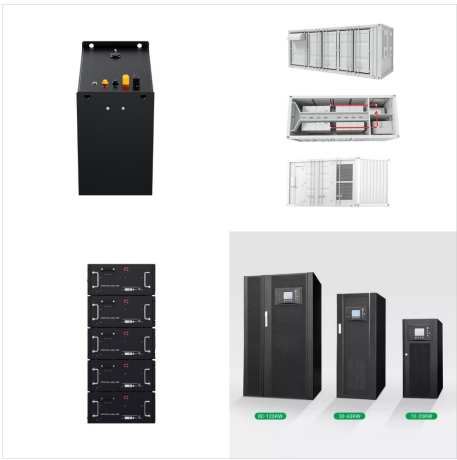
SUSTENTATOR COM FRENCH SOUTHERN TERRITORIES



The official name of French Southern Territories (ATF) is Terres australes et antarctiques fran aises and consists of flag colors. The capital city of French Southern Territories is . French Southern Territories has the total estimated population as of ???



?????(C)?????? French Southern Territories
?????(C)????????????????(C)?????????(R)??(R)??
???? ???? ??????????<?????????????
?????????<????? ????u????????? 1/4
??<?????(R)????????????? 1/4
??(C)?????????????????<?????????-?? 1/4 ?? 1/4
?? 1/4
?????????<????????????????200513??<???????



The French Southern and Antarctic Territory, FSAT, (Scott Catalog), or French Southern and Antarctic Lands (Terres australes et antarctiques fran aises, TAAF) is an overseas Territory of France. It consists of: Ad lie Land, Crozet Islands, ???

SUSTENTATOR COM FRENCH SOUTHERN TERRITORIES



The flag for French Southern Territories, which may show as the letters TF on some platforms. The Flag: French Southern Territories emoji is a flag sequence combining `🇹🇫` Regional Indicator Symbol Letter T and `🇫🇷` Regional Indicator Symbol Letter F .



The French Southern and Antarctic Lands (French: Terres australes et antarctiques fran aises, TAAF) is an overseas territory (French: Territoire d'outre-mer or TOM) of France consists of: Ad lie Land (Terre Ad lie), the French claim on the continent of Antarctica.; Crozet Islands ( les Crozet), a group in the southern Indian Ocean, south of Madagascar.



  1/4  French Southern and Antarctic Territory? 1/4  196041,? 1/4 ?? 1/4 ?????919,??? 200513, ???