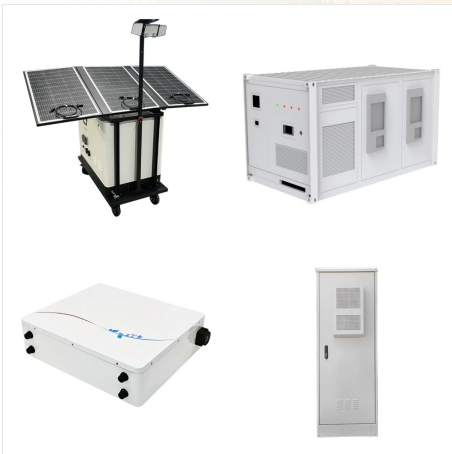
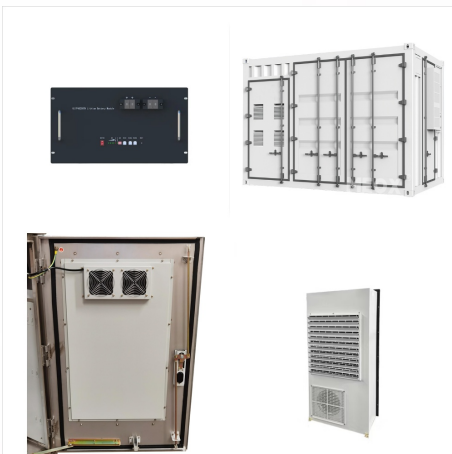




Toyota's new storage system is equipped with a function called sweep, which allows the use of reclaimed vehicle batteries, which have significant differences in performance and capacity, to their full capacity regardless of their level of deterioration.



Toyota's new storage system is equipped with a function called sweep, which allows the use of reclaimed vehicle batteries, which have significant differences in performance and capacity, to their full capacity regardless of ???



Toyota's new storage system is equipped with a function called sweep, which allows the use of reclaimed vehicle batteries, which have significant differences in performance and capacity, to their full capacity regardless of their level of deterioration.

SWEEP ENERGY STORAGE SYSTEM SAINT HELENA



In response, JERA and Toyota began discussions in 2018 to establish battery reuse technologies, which eventually led to this large-capacity, grid-connected Sweep Energy Storage System.



kW/1,260 kWh Sweep Energy Storage System is now operational and is connected to the consumer electrical power grid. The system incorporates a sweep function developed by Toyota researchers to enable use of reclaimed automotive batteries to their full capacity regardless of their level of deterioration.



The new storage system has a sweep function, which facilitates the use of old vehicle batteries to full capacity despite their different capacities and performances. Toyota Central R&D Labs, Inc. created this functionality that controls energy discharge freely through a switch for electricity flow.

SWEEP ENERGY STORAGE SYSTEM SAINT HELENA



Toyota's new storage system is equipped with a function called sweep, which allows the use of reclaimed vehicle batteries, which have significant differences in performance and capacity, to



Jera and Toyota Motor announced the construction and launch of the claimed world first large capacity "Sweep Energy Storage System" built using batteries reclaimed from electrified vehicles



JERA Co., Inc. and Toyota constructed a large-capacity sweep energy storage system using the drive, or traction, batteries of used electrified vehicles (HEVs, PHEVs, BEVs, and FCEVs). The constructed system enables a second use of vehicle batteries with large differences in performance and capacity in a non-automotive application.

SWEEP ENERGY STORAGE SYSTEM SAINT HELENA



Toyota's new storage system is equipped with a function called sweep, which allows the use of reclaimed vehicle batteries, which have significant differences in performance and capacity, to their full capacity regardless of their level of deterioration.