



The Symphony??? II power management system control board contains a test button, a status LED and eight priority load LED"s. It creates and sends signals to optional remote modules, instructing them when to add (turn power on) or shed (turn power off) the managed load. The Symphony II system power line carrier technology has been



Symphony(R) II Power Management, has the flexibility to automatically direct backup electricity to any appliance, light, TV or computer in a home. And unlike conventional backup power systems that may only provide access to 50% of a home's power needs, Home Generator Systems by GE can power more of a home with a smaller, more fuel-efficient,



Symphony@ II Power Management System includes 1 or 2 modules (model dependent), which should be sufficient for most homes, allowing you to manage up to 8 high-wattage appliances. SVMPHONV@II POWER MANAGEMENT TECHNOLOGY How Does the Symphony@ II Power Management System Work? When a power outage occurs, the transfer switch immediately ???

SYMPHONY POWER MANAGEMENT SYSTEM



Home generators are designed to keep lights and home appliances powered in the event of a power outage - automatically. Best of all, they provide peace of mind that your family won't have to endure another headache-inducing power outage in the dark. The first and only system of its kind! It's the fastest, most affordable home generator



The Symphony??? II power management system control board contains a test button, a status LED and eight priority load LED's. It creates and sends signals to optional remote modules, instructing them when to add (turn power on) or shed (turn power off) the managed load. The Symphony II system power line carrier technology has been



The Symphony II power management system is packaged with the Briggs & Stratton 100-amp or 200-amp automatic transfer switch, as well as its dual 200-amp/400-amp automatic transfer switch. Symphony

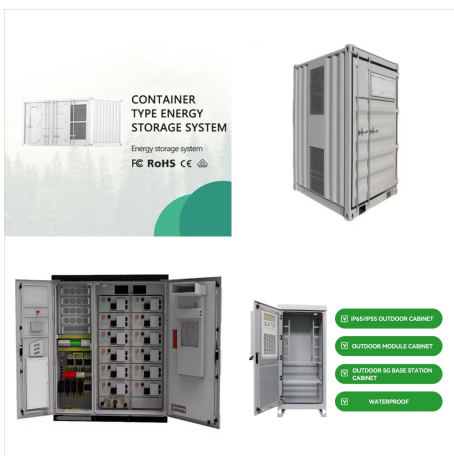
SYMPHONY POWER MANAGEMENT SYSTEM



Some major ones include Generac Smart Management Modules, Kohler Power Relay Modules, and the Briggs & Stratton Symphony II Power Management system. Generac Smart Management Modules. Generac sells small energy management modules that connect directly to loads on a home circuit breaker. Each module is assigned a priority level, and that is the



NEW Power Management System from Briggs & Stratton(R) that monitors and manages household power to prioritize the appliances and systems customers need most. Pair the Symphony Choice Kit with a PowerProtect™ 10-26kW standby generator and Automatic Transfer Switch (ATS) to eliminate the risk of generator overload or backfeeds to protect

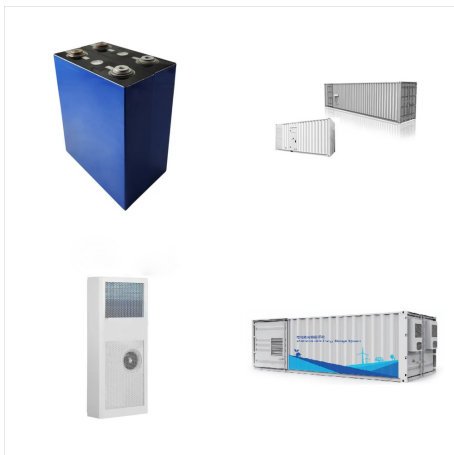


Stratton's new Symphony (R) II Power Management system. As the most customizable Power Management system anywhere, this patented technology is the easiest way to give your family unprecedented peace of mind and protection during a power outage. Symphony(R) II Power Management automatically balances the power needs of

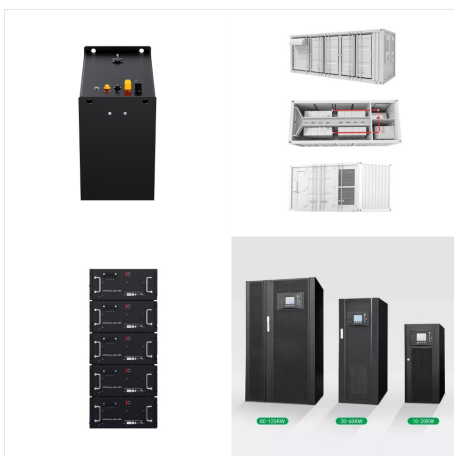
SYMPHONY POWER MANAGEMENT SYSTEM



Symphony(R) II Power Management System ???
Customizable to your home's needs ???
Automatically balances the power of your home's electrical load including high wattage items like air conditioning units and electric ovens ??? Offers whole house power with a more affordable home generator Commercial-Grade Briggs & Stratton Vanguard ??? Engine



With Patented Symphony II Power Management technology, the 10kW generator system powers more of your home's appliances - including up to two 3-ton air conditioning units*. Requires the purchase of Symphony II Remote Modules. Up to 8 modules can be added to ensure the generator won't overload. Placement & Safety

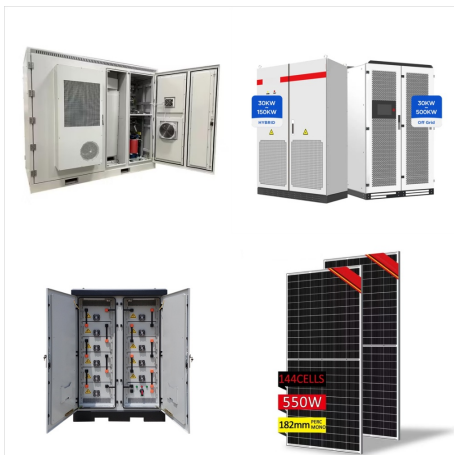


Symphony(R) II Power Management lets you power up to eight SECONDARY high-wattage appliances based on your family's specific power needs. It then manages the distribution of power from the backup generator to those ???

SYMPHONY POWER MANAGEMENT SYSTEM



4 BRIGGSandSTRATTON A ??? Power Indicator
LED B ??? WiFi Configuration button C ??? Device
Configuration button D ??? Mode LED E ??? WiFi
Indicator LED F ??? RS-485 Indicator LED G ???
Device Indicator LED H ??? CPU Indicator LED J
??? Input Terminal Block (Field Connections) K ???
Service port (serial) The wireless module can be
installed wherever it is convenient and a ???



The Symphony ??? II power management system
control board contains a test button, a status LED
and eight priority load LED's. It creates and sends
signals to optional remote modules, instructing them
when to add (turn power on) or shed (turn power off)
the managed load. The Symphony II system power
line carrier technology has been



The Symphony II system is the result of over five
years of standby power management research and
development and expands upon the successful
launch of the patented Symphony power
management controls introduced by Briggs &
Stratton in 2009.

SYMPHONY POWER MANAGEMENT SYSTEM



SYMPHONY (R) II POWER MANAGEMENT SYSTEM. 1. Review local codes to determine if a transfer switch with separate service entrance disconnect is required. Smart Power ??? Active monitoring allows you to purchase a smaller, more affordable home generator system ??? The smart way to direct backup power anywhere in your house,



The Symphony(R) II power management system control board . contains a test button, a status LED and eight priority load LED"s. It . creates and sends signals to optional remote modules, instructing them when to add (turn power on) or shed (turn power off) the managed load. The Symphony(R) II system power line carrier technology has been



POWER MANAGEMENT NEW Symphony Choice Kit Put the Power in your Customer's Hands
Symphony Choice Kit Features: Symphony Choice Kit Benefits: Introducing a NEW Power Management System from Briggs & Stratton(R) that monitors and manages household power to prioritize the appliances and systems customers need most. Pair the Symphony Choice Kit with a

SYMPHONY POWER MANAGEMENT SYSTEM



The Symphony(R) II power management system control board contains a test button, a status LED and eight priority load LED's. It creates and sends signals to optional remote modules, instructing them when to add (turn power on) or shed (turn power off) the managed load.



The Symphony(R) II power management system control board contains a test button, a status LED and eight priority load LED's. It creates and sends signals to optional remote modules, instructing them when to add (turn power on) or shed (turn power off) the managed load. The Symphony(R) II system power line carrier technology has been



The smartest and quietest generator on the market. The Briggs & Stratton from NEVER DARK is making backup power more affordable with the Symphony(R) II Power Management system. As the most customizable Power Management system (LOAD SHEDDING) on the market, this standby generator technology provides your family unprecedented peace of mind and protection during ???

SYMPHONY POWER MANAGEMENT SYSTEM



MILWAUKEE, WI (June 2, 2020) ??? Long a leader in smart power management systems for standby generators, Briggs & Stratton Corporation has upgraded its power management offerings with the introduction of the new Amplify Power Management System. "Power management basically takes all of the power created by the generator and assigns priorities to various ???

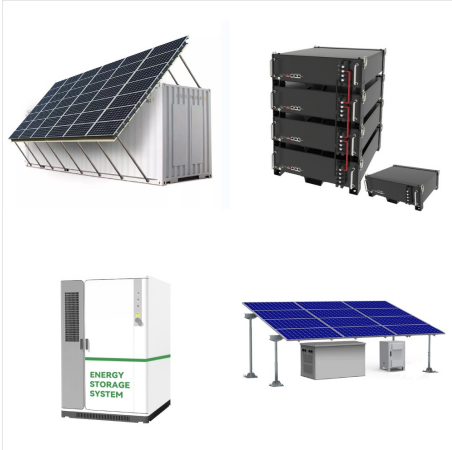


Briggs & Stratton Symphony II Power Management superstore. Huge selection of Briggs & Stratton Symphony II Power Management Systems. Buy Briggs & Stratton Symphony II Power Distribution System Direct and save.

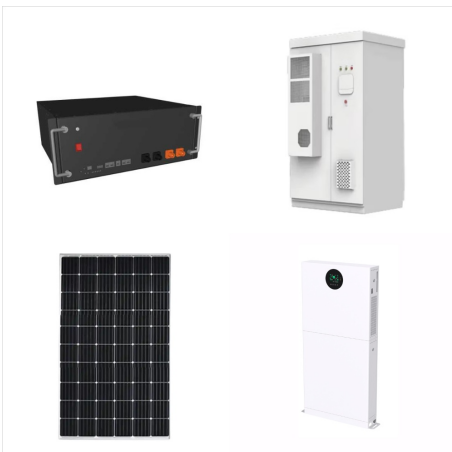


Symphony(R) II Power Management System automatically balances the power needs of your home's electrical loads ??? including high-wattage items like air conditioning units, electric stoves and electric dryers ??? to give your family uninterrupted, whole-house power with a smaller, more affordable home generator.

SYMPHONY POWER MANAGEMENT SYSTEM



The Symphony??? II Power Management System includes 1 or 2 modules (model dependent), which should be sufficient for most homes, allowing you to manage up to 8 high-wattage appliances! One Plus One Equals One The new Dual 200 Amp Transfer Switch/Split 400 Amp replaces the need for two



Symphony(R) II Power Management System automatically balances the power needs of your home's electrical loads ??? including high-wattage items like air conditioning units, electric stoves and electric dryers ??? to give your family uninterrupted, whole-house power with a smaller, more affordable home generator.



The Symphony??? II system is the result of over five years of standby power management research and development and expands upon the successful launch of the patented Symphony??? power management

SYMPHONY POWER MANAGEMENT SYSTEM



Symphony(R) II Power Management System ???
Customizable to your home's needs ???
Automatically balances the power of your home's
electrical load including high wattage items like air
conditioning units and electric ovens ??? Offers
whole house power with a more affordable home
generator Commercial-Grade Briggs & Stratton
Vanguard ??? Engine



Stratton's new Symphony(R) II Power Management
system. As the most customizable Power
Management system anywhere, this patented
technology is the easiest way to give your family
unprecedented peace of mind and protection during
a power outage. Symphony(R) II Power
Management automatically balances the power
needs of