



What does kernel-power event ID 41 mean?

Log Name: System Source: Microsoft-Windows-Kernel-Power Event ID: 41 Level: Critical Description: The system has rebooted without cleanly shutting down first. This error could be caused if the system stopped responding, crashed, or lost power unexpectedly. Why does the system generate Kernel-Power Event ID 41 error?

What does kernel-power 41 mean?

However, the Kernel-Power 41 issue doesn't always indicate a power supply issue but can also indicate an issue with your system hardware, causing a power fault and, in turn, your system to crash. The Kernel-Power critical error is typically associated with Event ID 41.

What is kernel-power error 41?

The Kernel-Power critical error is typically associated with Event ID 41. Furthermore, Kernel-Power Event ID 41 is accompanied by the keywords (70368744177664),(2), which you can use to pinpoint your bug troubleshooting. So, what causes Kernel-Power error 41?

How do I fix kernel power event ID 41 error?

To do this, follow these steps: Right-click My Computer, then select Properties > Advanced system settings > Advanced. In the Startup and Recovery section, select Settings. Clear the Automatically restart check box. The Kernel Power event ID 41 error occurs when the computer shuts down or restarts unexpectedly.

What causes event 41 kernel power?

Hello Mr. Knight111, Welcome to the Microsoft community. Based on the information you have provided, the problem you are experiencing with "Event 41, Kernel Power" is usually related to system instability or hardware failure. This issue may cause the computer to restart unexpectedly while performing certain tasks.

What happens if a computer restarts and generates event ID 41?

The computer restarts and generates Event ID 41, but the BugcheckCode and PowerButtonTimestamp values are zero. In such cases, something prevents Windows from generating error codes or from writing error codes to disk.



Critical 17/03/2020 21:56:57 Kernel-Power 41 (63)
Critical 16/03/2020 15:49:39 Kernel-Power 41 (63)
Critical 13/03/2020 00:44:28 Kernel-Power 41 (63)
The detailed report in the Event properties is this :
Log Name: System. Source:
Microsoft-Windows-Kernel-Power. Date: 23/03/2020
18:43:36. Event ID: 41. Task Category: (63) Level:
Critical



? This was an annoying issue, but disabling C-state for my AMD cpu in bios fixed it. Seems like when cpu was idling and then needed power back again (often in games or just quitting out of the game after couple of minutes) this ???



Log Name: System Source:
Microsoft-Windows-Kernel-Power Date: 24/06/2024
23:44:54 Event ID: 41 Task Category: (63) Level:
Critical Keywords: (70368744177664),(2) User:
SYSTEM Computer: DESKTOP-B8MCHEU
Description: The system has rebooted without cleanly shutting down first.



Step (3): Next, on the Edit Plan Settings, click on the Change advanced power settings link. Step (4): On the Power Options dialog box, expand the Hard disk and Turn off hard disk after option. Step (5): After that, click on the On battery and Plugged-in option and then select Never from the drop-down menu.



I do not have a crash at all. My computer shuts down (apparently) without any issue. Then, on next boot-up (which is happening flawlessly), I have the message in my Event Viewer. That's why I titled my post "False Kernel Power Event ID 41 (63) reported" ;) I will dig through the Event Viewer to see if there is anything related to that (false) event.



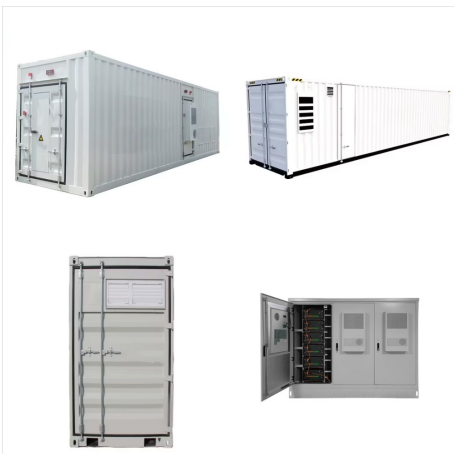
Oltre a quanto sopra, si può anche incontrare il codice di arresto come "Kernel Power Event ID 41 (63)". Perché si verifica l'errore Kernel-Power 41? Ci potrebbero essere diverse ragioni dietro questo errore, tra cui: Mancanza di alimentazione sufficiente; Guasto hardware; Overclock del sistema; Errori di memoria; BIOS obsoleto



Latest Windows hotfixes are not installed ??? Just a few days after Windows 11 officially launched, Microsoft released a hotfix aimed at resolving those issues where people with older motherboard models were experiencing serious instability issues. To make sure that you're already taking advantage of this hotfix, you'll need to install every pending Windows 11 update ???



The event 41 kernel power means that there is something happened unexpectedly that blocked Windows from turning off properly and there is a message saying that "The system has rebooted without cleanly shutting ???



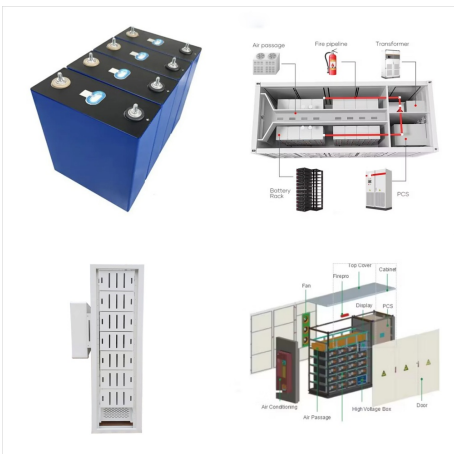
You can meet the event ID 41 kernel power when your driver is out of date. Device drivers are very important because they are used to inform your system and other software how to interact with some specific hardware. In common cases, all drivers will be updated when you update Windows, but there is a possibility that some drivers were not updated.



The event 41 kernel power means that there is something happened unexpectedly that blocked Windows from turning off properly and there is a message saying that "The system has rebooted without cleanly shutting down first."



Hello, thank you for your feedback here on your issue, it seems that your computer is experiencing Kernel Power Event 41 (63) as well as some new blue screens of death. First of all, thank you for sharing the details and I understand your urgency. I will provide you with some suggestions that you can try to improve your system first: 1.



Kernel Power 41 or Event ID: 41 happens when your PC shuts down unexpectedly. This scenario usually indicates a problem with the hardware, but it is not limited to that. kindly check these things: Overclocking: Disable overclocking to see whether the issue occurs when the system is run at the correct speed. Check the memory: Verify the



The Kernel-Power source is associated with power-related events in Windows. Event ID 41 is often logged when the system restarts unexpectedly, and the cause of the shutdown is not recorded. This event can occur due to various reasons, including hardware issues, driver problems, power supply fluctuations, overheating, or software conflicts.



Hello, Recently I just assembled a new gaming PC (See specs below). After about 3 weeks of gameplay, when I transitioned from a 2080ti to a 4090, I started having random reboots during gameplay only. Right now it has only occurred while playing Warhammer 3, and It Takes Two. At first I though



Log Name: System Source:

Microsoft-Windows-Kernel-Power Date: 22/11/2020

20:13:26 Event ID: 41 Task Category: (63) Level:

Critical Keywords: (70368744177664),(2) User:

SYSTEM Computer: DESKTOP-KOHU5V1 Event ID 41 Kernel Power Issue Log Name: System.

Source: Microsoft-Windows-Kernel-Power. Date:

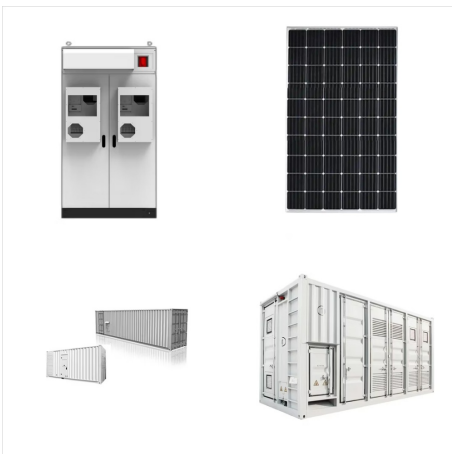
22/11/2020 20:13:26. Event ID: 41



And as per Event Viewer, this event has taken place 4 times this week, particularly twice today itself. I hope you can help me. Log Name: System Source: Microsoft-Windows-Kernel-Power Date: 11-05-2021 14:54:13 Event ID: 41 Task Category: (63) Level: Critical Keywords: (70368744177664), User: SYSTEM



Stack Exchange Network. Stack Exchange network consists of 183 Q& A communities including Stack Overflow, the largest, most trusted online community for developers to learn, share their knowledge, and build their careers.. Visit Stack Exchange



C???nh b?o Kernel-Power Event ID 41 tr?n Windows 10. L?>>?i Kernel-Power thAE??>>?ng li?n quan ??????n Event ID 41. Ngo?i ra, Event ID Kernel-Power 41 c?n ??i k?m v?>>?i c?c t?>><< kh?a (70368744177664),(2), m? b???n c? th?>>? s?>>- d?>>?ng ???>>? x?c ???>>?nh c?ch kh???c ph?>>?c l?>>?i c?>>?a m?nh.



Kernel-Power Event ID 41 does indicate that the system restarted without shutting down completely. You have taken many effective steps to troubleshoot the problem. Regarding your issue, the old WIFI driver may indeed cause system instability, but we ???



event 41 is a reaction, not a cause. Windows runs a report at every start up and if it finds it wasn't shutdown previously it creates event 41(63). I see two bugchecks but I don't have any way of telling cause just from them.



Log Name: System Source:

Microsoft-Windows-Kernel-Power Date: 01/01/2024

18:25:24 Event ID: 41 Task Category: (63) Level:

Critical Keywords: (70368744177664),(2) User:

SYSTEM Computer: WINDOWS-D8I19SQ

Description: The system has rebooted without cleanly shutting down first. Event ID 41 The system has rebooted without cleanly shutting down



[SOLVED] Freeze system, kernel power 41, dual monitor, Isn't ram or energy problem. Thread starter criiza; Start date Mar 11, 2021; Tags freezes randomly kernel power 41 ram Toggle I know event 41 doesn't auto mean its power, as thats just a reaction to a restart. But the fact it happened after adding new screen could mean its a power draw