

How much power does a Tesla Powerwall 3 have?

Continuous power output is the amount of power the battery can handle at any time. The Tesla Powerwall 3 provides a huge upgrade in power, with a continuous power output of 11.5 kW. This is more than twice as powerful as the older Powerwall models.

Will Tesla Powerwall 3 be available in 2024?

Tesla's Powerwall 3 home battery is expected to be available for consumers in 2024. It has a more powerful inverter, meaning it can output more power and run more of your home at once.. The most recognizable home battery is getting a facelift and an upgrade. Tesla debuted its new solar battery, the Tesla Powerwall 3, this week in Las Vegas.

Is Tesla Powerwall 2 better than Powerwall 3?

And while the Tesla Powerwall 2 is technically more "stackable" in its capacity than the Powerwall 3, the odds of your home's energy storage needs exceeding even five of these batteries is highly unlikely. The average American home uses somewhere around 30 kWh per day. Your home might not be average though.

Does Tesla Powerwall 3 have a solar inverter?

The margins on these things are insane. Tesla also confirmed that Powerwall 3 has an integrated solar inverter that can take up to six solar inputs. Here, Tesla explains the main difference between Powerwall 3 and its previous offering: Powerwall 3 is a fully integrated solar and battery system, designed to meet the needs of your home.

What makes Tesla's Powerwall 3 a great home energy solution?

As Tesla prepares to roll out the Powerwall 3, prospective users are keen on the transformative features it brings to the home energy landscape. The inclusion of an integrated solar inverter and system controller stands out, promising an efficient and versatile home energy solution.

Is Tesla Powerwall 3 a good battery?

We found the Tesla Powerwall 3 to be the better deal, mainly due to its significantly higher power capabilities, integrated hybrid inverter and overall fair price. That doesn't make the Powerwall 2 a horrible battery. Like other home batteries on the market, it's just starting to show its age a bit.



The Powerwall 3 unit has six solar inputs, allowing it to pair with large solar systems up to 20 kilowatts (kW) in size. It also has an impressive continuous power output of 11.5 kW to run even the most power-hungry appliances. The Tesla Powerwall 3 costs \$866 per kWh of storage capacity, making it one of the best home batteries in value



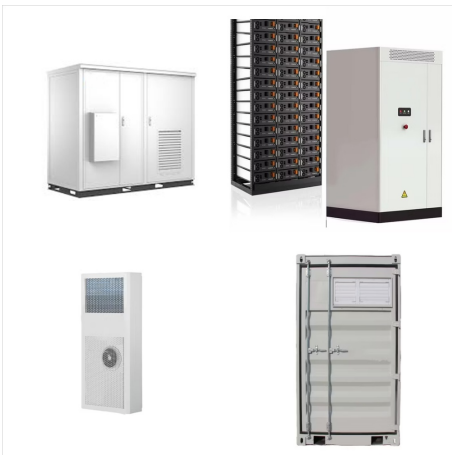
Weight of Powerwall 3 Expansion (no cover or bracket) 242.5 lb (110 kg) Weight of Glass Front Cover: Choose Powerwall Cable Entry; Plan Amount and Size of Conduit or Raceway; STEP 2: Remove Powerwall 3 from Packaging and Transport Using the Powerwall Dolly Install Tesla 100 A CTs; STEP 10: Complete the Installation.



The Powerwall 3 is a hybrid solar and battery energy storage system, while Powerwall 2 is only an AC battery. The Powerwall 3 has higher efficiency with DC-coupled charging and uses LFP batteries, which are safer and longer-lasting. Plus, the compact size and higher power rating of 11.5kW continuous, make it a superior choice.



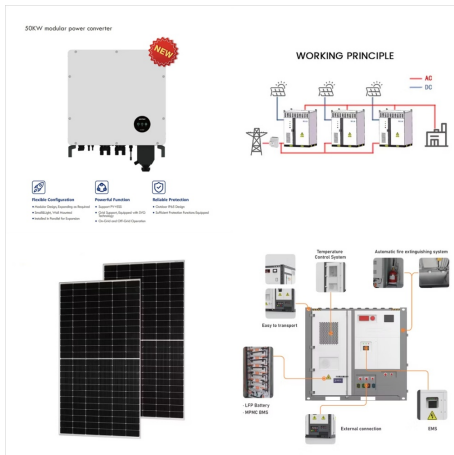
Powerwall 3 is a fully integrated solar and battery system, designed to accelerate the transition to sustainable energy. The following categories of solar module meet the UL 3741 PVHCS listing when installed with Powerwall 3 and Solar Shutdown Devices. Tesla Solar Roof PV Hazard Control System: BIPV compliance document



Ground-mount Powerwall 3 on Poured Concrete with Steel Posts : Wall and Foundation Choose Powerwall Cable Entry; Plan Amount and Size of Conduit or Raceway; STEP 2: Remove Powerwall 3 from Packaging and Transport Using the Powerwall Dolly Install Tesla 100 A CTs; STEP 10: Complete the Installation.



Tesla has slightly redesigned the Powerwall 3, making it compact yet heavier compared to its predecessor. With dimensions of 43.25 in x 24 in x 7.6 in and a weight of 287 lbs, it seeks to blend power with aesthetics.



Powerwall 3 is a fully integrated solar and battery system that can supply more power with a single unit and is designed for easy expansion. Learn how to order, install, and monitor Powerwall 3, and find answers to frequently asked questions.



The original Powerwall 1 used the smaller 18650 size cells, while the Powerwall 2, reviewed here, uses the larger 21-70 cells, which have a 21mm diameter and are 70mm long. highlights and shortfalls of the next-generation Tesla Powerwall 3 solar and battery energy storage system. Will it beat the competition and live up to the hype? 2 Sep 2024.



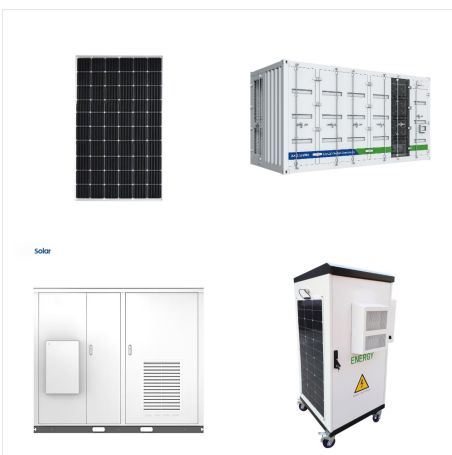
Powerwall 3 Powerwall 2 Power. Energy Capacity. 13.5 kWh 1. On-Grid Power Size and Weight. H x W x D 1,150 mm x 753 mm x 147 mm 114 kg. Scalable. Up to 10 units. Installation. Request a quote from Tesla and get connected to a Tesla Certified Installer or sign up to stay updated.



Powerwall, in conjunction with a Backup Gateway 2, Backup Switch or Gateway 3, will power the home during a grid outage. When the system is installed with solar, Powerwall stores the excess solar energy produced to power the home when the sun isn't shining. Installation should only be performed by a Tesla Certified Installer.



1 Values provided for 25°C (77°F), at beginning of life. 3.3 kW charge/discharge power. 2 The maximum number of Powerwall 3 units per installation may vary by market. 3 Typical solar shifting use case. 4 The customer is expected to provide internet connectivity for Powerwall 3; cellular should not be used as the primary mode of connectivity.



A Powerwall system can power your entire home, including your heater or A/C, as well as other large appliances. Save and Earn. Using your usage history, weather forecasts and electricity price estimates, Powerwall optimises your stored ???

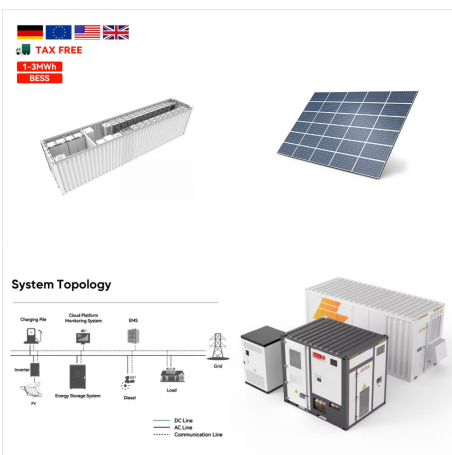
TESLA POWERWALL 3 SIZE



Tesla Powerwall 3 has now been released in the UK and is taking the market by storm. It's a fantastic package at a very competitive €/kWh price. Size & scalability - Expansion packs. Tesla are offering a expansion packs in the size of 13.5 kWh. These can be added to a Powerwall 3, increasing it's capacity.



The size has changed; the new Powerwall 3 is 50mm shorter, 150mm narrower and 30mm deeper than the Powerwall 2. Considering the new PW3 also contains a solar inverter and is comparable to the much larger Powerwall Plus, the compact size is rather impressive.



Discover the latest details on Tesla's Powerwall 3, featuring enhanced power capacity and integrated solar inverter. Learn about its release date, specs, and co. The next big item is that Tesla will increase the size of ???



Tesla's Powerwall 2 is only available in one size, but multiple can be connected together to expand the power available. Each one has a 13.5 kWh capacity. The original Powerwall was available at a smaller size but has been discontinued in favor of the upgraded model.



Here are the specifications table for Tesla Powerwall 3 vs 2 capacity, dimension, size, and power capacities. Point of distinction: Powerwall 3: Powerwall 2: Energy capacity: 13.5 kWh: 13.5 kWh usable energy (14 kWh total) On-grid power: 11.5 kW continuous: Tesla Powerwall 3 Vs 2 Price.



The original Powerwall (retroactively referred to as the Powerwall 1) had a 6.4 kWh capacity and was capable of delivering 3.3 kW of power. [14] Tesla introduced an improved Powerwall 2 in October 2016 with a 13.5 kWh capacity and capable of delivering 5 kW of power continuously and up to 7 kW of peak power in short bursts (up to 10 seconds).



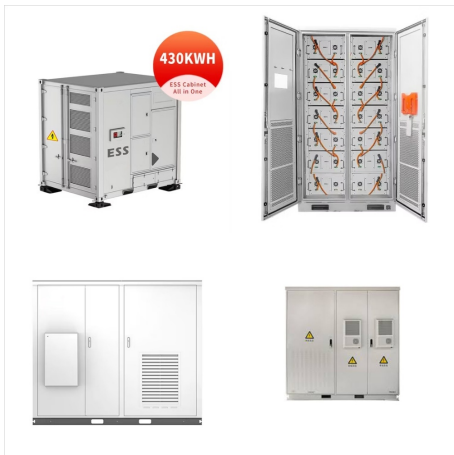
The total maximum system size is (7) units - up to (4) Powerwall 3 units with up to (3) Expansion units. Compatible Powerwall 3 Versions: Powerwall 3 units with Tesla P/N 1707000-xx-J or greater are compatible with Expansion units; Flexibility: The Expansion Harness can be



The Tesla Powerwall 3 is a big step up from the Powerwall 2, boasting some key improvements while still maintaining a reasonable price point. A few major changes like switching to LFP cells and increased maximum output make it a worthwhile investment for most homeowners. "Storage isn't one size fits all," Fields says, "and the building



Tesla is set to release its Powerwall 3 in 2024. Let's dive into its pros +cons to help you answer the question "should I wait for the Powerwall 3?" Increased Max Solar System Size. The Powerwall 3 clocks in at 20 kW DC, 119% higher compared to the Powerwall 2. This is a key detail as it tells you how much solar energy your Powerwall



The default maximum power / current output for Powerwall 3 is 11.5 kW / 48 A. Beginning with Powerwall software version 24.20, this value can select the appropriate Powerwall 3 breaker size depending on the desired power output. The Power / Current Limit is configured using Tesla One: If the system is running



Powerwall 3 Expansion. Powerwall 3 Expansion is an attachable unit designed for Powerwall 3 owners to increase backup duration and energy needs at a reduced cost. Powerwall 3 Expansion units provide an additional 13.5 kWh of energy per unit. Powerwall 3 Expansion units can be easily installed with Powerwall 3.



Tesla Solar Inverter offers improved aesthetics, reliability and native integration with the Tesla ecosystem for both Solar Roof and solar panel systems. Learn more about the Tesla Solar Inverter.

Like Powerwall+, Powerwall 3 features an integrated solar inverter. 7.6 kW, 5.7 kW, 5 kW, 3.8 kW Maximum Power Point Trackers: 4. Size 26 in

TESLA POWERWALL 3 SIZE



In terms of size, the Powerwall 3 measures 1099 mm x 609 mm x 193 mm, compared to the Powerwall 2's dimensions of 1150 mm x 753 mm x 147 mm. While the Powerwall 3 is deeper/thicker, it's also narrower and shorter, which could make it ???



Choose Powerwall Cable Entry; Plan Amount and Size of Conduit or Raceway; STEP 2: Remove Powerwall 3 from Packaging and Transport Using the Powerwall Dolly Powerwall 3 Wall Bracket Anchoring Details for Wall-mounting or Ground-mounting on Approved Foundation; Tesla Asset Controller (TACO) Low Voltage and Communication Wiring.



A Powerwall system can power your entire home, including your heater or A/C, as well as other large appliances. Save and Earn. Using your usage history, weather forecasts and utility price estimates, Powerwall optimizes your stored energy ???



Tesla powerwall with the main panel, backup gateway and backup load subpanel form integrity that provides you with energy during power outages.

Let's Take The House Size. A 5000 square foot house can be occupied by a couple who consumes 1500 kWh per month. Similarly, a smaller 1800 square foot house can be occupied by a large family