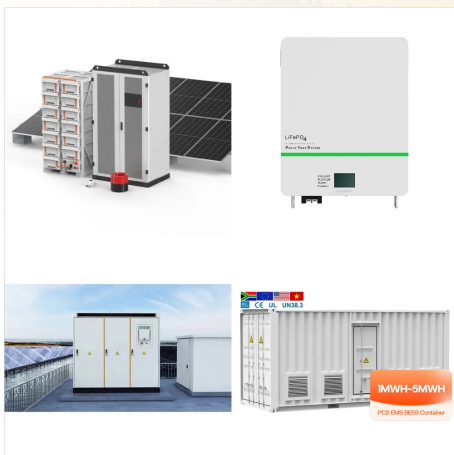




Inverter: Powerwall 2 x. Powerwall+ Solar-to-grid efficiency 97.5% 4 solar inputs with Maximum Power Point Trackers. Powerwall 3 Solar-to-grid efficiency 97.5% With Tesla, when your Powerwall system changes status, such as the utility grid going down or offline, you can expect to receive notifications from the Tesla app. When the sun comes



Key features of the Powerwall 3 include an integrated solar inverter that allows direct connection to solar panels, enhancing overall efficiency. If you've got high energy consumption and want to seamlessly integrate with your existing solar panels, the Tesla Powerwall 3 is a solid pick. It's great for bigger homes and those with



View the list of inverters supported for Powerwall 1. For the best experience, we recommend upgrading or changing your web browser. What to Expect After Installation Registering Your Tesla Solar Inverter Connecting to Tesla Solar Inverter Turning On Your System Monitoring Your System Understanding System Performance Troubleshooting Your

TESLA POWERWALL SOLAR INVERTER



Tesla Powerwall 2 Pros & Cons

Pros:

- Depth Of Discharge (DoD): Excellent specifications including 100% DoD.
- Retrofit Capability: Easily integrates with third-party solar inverters, making it versatile for existing solar setups.
- Stackability: Allows for multiple units to be stacked together, ideal for users needing more than 13.5 kWh.

Cons:

- Expensive: One of the most expensive options on the market.



Natural Solar installed the world's very first Tesla Powerwall in January of 2016 in Sydney which was a defining moment in Australia's solar battery boom. Since then, Natural Solar has installed over 12,000 Solar Batteries Australia-wide and is the largest installer of solar batteries in Australia, making us the natural choice for home solar and battery needs to Australian households.



The Solar Shutdown Device is a Mid-Circuit Interrupter (MCI) and is integral to the rapid shutdown (RSD) function required for rooftop PV systems in accordance with Article 690 of the NEC. When paired with Powerwall 3, solar array shutdown is initiated by an External System Shutdown Switch or the On/Off Enable switch located on Powerwall 3.

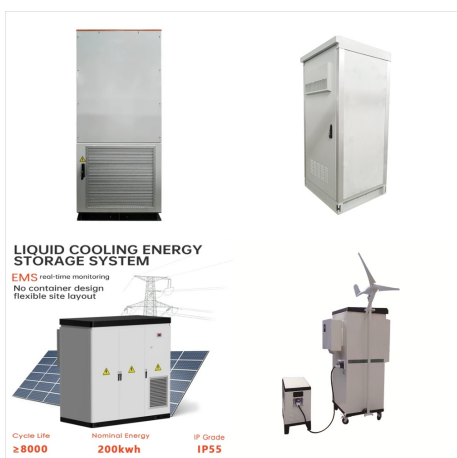
TESLA POWERWALL SOLAR INVERTER



The Tesla Powerwall 3 is a big step up from the Powerwall 2, boasting some key improvements while still maintaining a reasonable price point. Tesla solar and storage inverters: Tesla inverter, solar and storage: Dimensions (inches) 45.3 x 29.6 x 5.75: 62.8 x 29.7 x 6.3: 43.25 x 24 x 7.6: Weight (pounds) 251.3: 310: 287: Warranty: 10-year



The Tesla Powerwall is a rechargeable lithium-ion battery stationary home energy storage product manufactured by Tesla Energy. The Powerwall stores electricity for solar self-consumption, time of use load shifting, and backup power. [1] [2] The Powerwall was introduced in 2015 as Powerwall 1 with limited production. A larger model??? Powerwall 2??? went into mass production in early ???



If you already own Powerwall, the Tesla app experience for solar panels with Powerwall gives you access to additional features, For systems installed with a Tesla Solar Inverter, check that the inverter is powered on and connected to your home router or internet modem. If the Tesla Solar Inverter loses its internet connection, follow the

TESLA POWERWALL SOLAR INVERTER



Natural Solar installed the world's very first Tesla Powerwall in January of 2016 in Sydney which was a defining moment in Australia's solar battery boom. Since then, Natural Solar has installed over 12,000 Solar Batteries Australia-wide ???



Powerwall 3 can supply more power with a single unit and is designed for easy expansion to meet your present or future needs. Powerwall 3 features an integrated solar inverter allowing solar to be connected directly for high ???

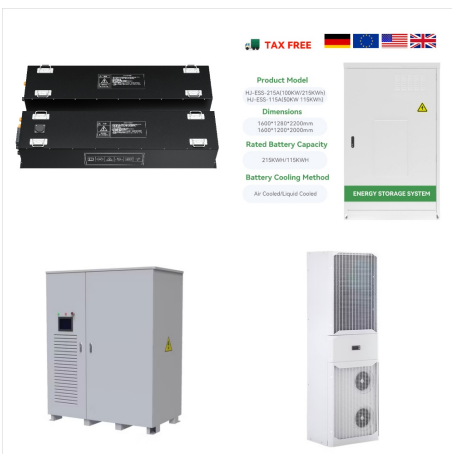


Integrated Solar Inverter. The Tesla Powerwall 3 comes with a built-in hybrid inverter that allows direct DC coupling, meaning less energy is lost during conversions. This results in greater efficiency and ensures that more of your solar power is captured and stored. Expandable Design.

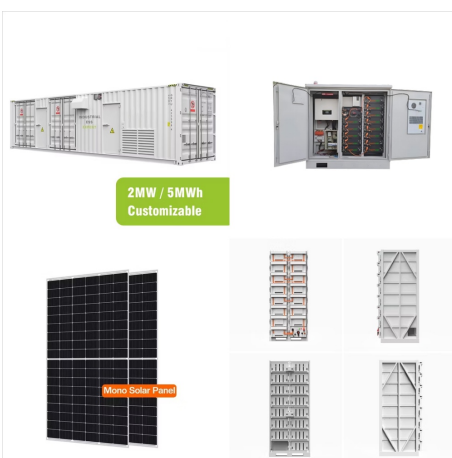
TESLA POWERWALL SOLAR INVERTER



Tesla Solar Inverter with Site Controller Web Course Bundle 2-hour web course bundle that covers Tesla Solar Inverter installation, MCI installation, metering, commissioning, stringing & shading, troubleshooting, and field-made MC4 connections.



To call the Tesla Powerwall a revolution is not too far of a stretch. Unveiled in 2015, the Powerwall is a compact, rechargeable lithium battery made specifically for households. Does the Powerwall Work with All Solar Inverters? Even though the Powerwall has a built-in battery inverter, it still needs to be connected to a solar inverter to



Additionally, the Tesla inverter only comes with a 12.5-year warranty, which is shorter than the industry standard of 25 years. While the Tesla inverters currently LIMIT your usage to a Tesla Battery system keeping you confined in their ecosystem, the Tesla Powerwall is compatible with Enphase inverters.

TESLA POWERWALL SOLAR INVERTER



Going directly through Tesla is a great way to get bulk pricing on solar and storage, but if you want a Powerwall on its own, you'll need to go through a local installer. Buying a Tesla Powerwall through a local installer typically runs about \$12,000-\$16,500 fully installed (\$8,400 to \$11,550 after the 30% federal tax credit is applied).



Powerwall+ / Tesla Solar Inverter is Not Producing;
Powerwall+ / Tesla Solar Inverter is Displaying 0A
for a Connected String; Powerwall+ / Tesla Solar
Inverter is Under Producing; Negative Solar
Reading; Solar Production Value Does Not Match
Inverter Output Solar Production is Higher or Lower
Than Expected



In addition to home appliances, Powerwall can provide stored solar energy to your electric vehicle through your home's distribution panel. When solar generates more energy than your home needs, you can charge your Tesla vehicle using only the excess solar energy. Learn more about what you can expect from Powerwall 3.

TESLA POWERWALL SOLAR INVERTER



The Tesla Powerwall 3 was officially released in Sydney, Australia, on August 16, 2024. This home solar battery & inverter combo marks the third generation of Tesla battery storage systems, bringing significant ???



As we previously reported, the biggest difference with the Powerwall 3 is a higher power output of 11.5 KW continuous and an integrated solar inverter. Tesla CEO Elon Musk later confirmed that the



On the landing page, the following alert appears under the Powerwall+ / Tesla Solar Inverter: "Rapid Shutdown Initiated. Check AC breaker and low-voltage rapid shutdown circuit". A warning icon, calling your attention to a possibly risky situation Powerwall / Powerwall+ Displaying 0% State of Energy;

TESLA POWERWALL SOLAR INVERTER



Key features of the Powerwall 3 include an integrated solar inverter that allows direct connection to solar panels, enhancing overall efficiency. If you've got high energy consumption and want to seamlessly integrate with ???

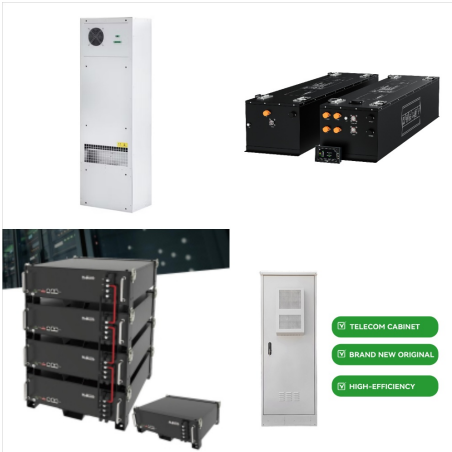


Powerwall can power your entire home with one unit, making whole-home backup protection more affordable. Each unit is self-contained with an integrated solar inverter for added efficiency, resulting in fewer parts and faster installation. This helps make multi-unit systems more affordable and system expansions easier in the future.



Powerwall can power your home with one unit, making backup protection more affordable. Each unit is self-contained with an integrated solar inverter for added efficiency, resulting in fewer parts. This helps make multi-unit systems more affordable and system expansions easier in the future.

TESLA POWERWALL SOLAR INVERTER



Tesla Powerwall 2 Pros & Cons Pros. Depth Of Discharge (DoD): Excellent specifications including 100% DoD. Retrofit Capability: Easily integrates with third-party solar inverters, making it versatile for existing solar setups. ???



Notably, Tesla Solar Inverter is designed as a standalone inverter and not as a hybrid inverter, meaning if you pair your solar with storage, you'll still want a battery with its own inverter, like the AC-coupled Powerwall, as opposed to a DC-coupled system.. Here's how its technical specifications stack up: The Tesla inverter technical specs



Key features of the Powerwall 3 include an integrated solar inverter that allows direct connection to solar panels, enhancing overall efficiency. This integration simplifies installation and provides a more streamlined system for ???

TESLA POWERWALL SOLAR INVERTER



In-depth review of the Tesla Powerwall 2, Powerwall Plus battery and unique Tesla solar inverter. With 13.5kWh storage capacity, instantaneous backup and off-grid capability, the Powerwall is one of the leading home ???