

What is Tesla Solar inverter?

Learn More Tesla Solar Inverter offers improved aesthetics, reliability and native integration with the Tesla ecosystem for both Solar Roof and solar panel systems. DC power coming from solar modules is inverted to AC power by Tesla Solar Inverter for home consumption. Like Powerwall+, Powerwall 3 features an integrated solar inverter.

Does Tesla Solar inverter have a gateway?

Note: Tesla Solar Inverter does not have a Gateway. If you are experiencing issues with your Tesla Solar Inverter, proceed with troubleshooting your inverter. If you experience one of the following issues, this indicates that your solar system is not producing energy and your home is being powered by your local utility.

How do I connect my Tesla Solar inverter?

To connect to your Tesla Solar Inverter, follow these steps: If it has been more than 15 minutes since the system was last powered on, power cycle the inverter by turning the breaker (s) OFF and then ON again. To avoid any interference from your cellular connection, put your device in airplane mode and then explicitly enable Wi-Fi.

What if my Tesla Solar inverter is not connected to the Internet?

If your Tesla Solar Inverter is not connected to the Internet for an extended period of time, or has not been registered with Tesla, we may not be able to provide important remote firmware upgrades. In these circumstances, we may not be able to honor your full Limited Warranty for your Inverter.

Does Tesla Solar replace a broken inverter?

Tesla Solar Refuses To Fix And Replace A Broken Inverter. Over Three Months Have Gone By. I invested \$34,000 in a Tesla solar system for my house and it's been 3 months now. I still have not had an inverter replaced. I called Tesla Solar to inquire about when the replacement would be done and they told me that they were waiting on parts. Really??

Why is my solar inverter not producing energy?

If you experience one of the following behaviors, this indicates that your solar system may not producing

TESLA SOLAR PANELS TROUBLESHOOTING INVERTER



energy and your home is being powered by your local utility. Note: Your solar inverter automatically switches to Night Mode in the absence of sunlight -- the lights will be off, and the screen will be blank.



? Tesla solar panels include a 25-year performance warranty that promises at least 80% power capacity for the warranty's duration. The company also has a 10-year equipment warranty. such as solar inverters, batteries, and any roof leaks or roof-mounting problems. Tesla customers can pay upfront in cash or take out a loan in select states



Tesla solar panels are designed to produce clean energy for decades. Learn more about best practices to get the most out of your solar system. If you do experience issues with your system, follow the troubleshooting steps for your inverter. Will my solar panels still operate during a power outage? Without Powerwall, your solar system will



There are two options to reset the Solar Inverter: Configure Tesla Solar Inverter with Site Controller Using Tesla One. Remote Energy Meter Field Tests; Troubleshooting the Solar Inverter Self-Test; Solar Inverter Start Up Issues; Appendix G: Safety Features.

TESLA SOLAR PANELS TROUBLESHOOTING INVERTER



The Tesla Solar Inverter is an integral component of your solar energy system, converting the DC electricity that your solar panels produce into AC electricity that your household appliances can utilize. Accustomed to the welcoming rays of the sun, Houston homes can massively benefit from an optimally functioning Tesla Solar Inverter.



On the landing page, the following alert appears under the Powerwall+ / Tesla Solar Inverter: "Rapid Shutdown Initiated. Check AC breaker and low-voltage rapid shutdown circuit". A warning icon, calling your attention to a possibly risky situation Troubleshooting Neurio Remote Energy Meters; Gateway CTs and Neurio CTs are Overlapping



Powerwall+ enabled and charging or discharging OR generating solar energy On (flashing slowly) Powerwall+ faulted at < 30 If it is not possible to communicate with Powerwall+ through the Tesla app, On Powerwall+ systems with additional interconnected solar, always turn off the solar inverter or disconnect the solar source before

TESLA SOLAR PANELS TROUBLESHOOTING INVERTER



Find the answers to your technical and general questions about Tesla energy products, including Powerwall, solar panels and Solar Roof. Becoming a Tesla Energy Customer. If you're interested in purchasing a Tesla energy product, schedule a virtual consultation and a Tesla Advisor will walk you through our products and any questions you may have.



I got a Tesla solar system installed on my home back in December of 2019. The system came with an inverter, which converts the DC power generated by the solar panels into AC power that can be used by my home. In May of 2022, the inverter failed and stopped working. I contacted Tesla Solar and they sent out a technician to take a look at it.

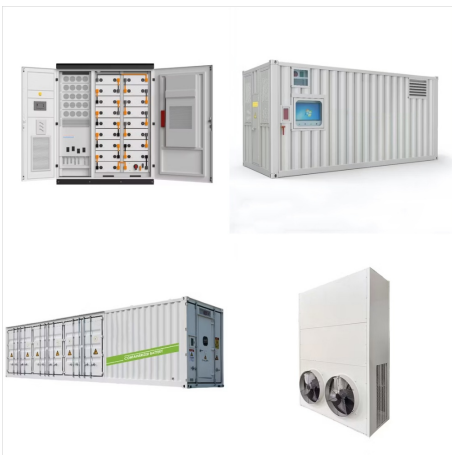


Here are ways to troubleshoot each of the Tesla inverter models that are currently available. SolarEdge, SolarEdge HD Wave & SolarEdge SetApp Models. The first step is to ensure that the inverter is producing solar energy. You want to make sure there is a number beside the "Pout" on the main display of the inverter.

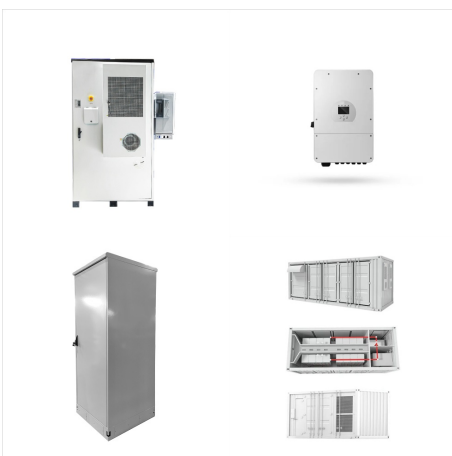
TESLA SOLAR PANELS TROUBLESHOOTING INVERTER



Solar Inverters: Solar inverters are an essential part of all solar systems and are placed between solar panels and the rest of your home. They convert the direct current (DC) produced by solar panels into alternating current (AC) used by your home. Like solar panels, solar inverters can vary in price based on manufacturer, efficiency and warranty.



Congratulations on making the change to clean energy and getting your house connected to solar energy with Tesla Solar panels. While this is a high end system with all the bells and whistles, it will still need some troubleshooting every now and again.



If the Tesla Solar Inverter loses its internet connection, follow the troubleshooting steps to change network settings. For systems installed with a third-party solar inverter, check that the solar Gateway provided with your Tesla solar system is powered on and connected to your home router or internet modem.

TESLA SOLAR PANELS TROUBLESHOOTING INVERTER



Replacement Timeline For Faulty Inverter. When troubleshooting Tesla solar panels, a common issue to check is a faulty inverter. The average replacement timeline for a faulty inverter is between 10-15 days. During this period, Tesla will coordinate a visit from a technician to replace the faulty inverter with a new one. Please note that the timeline may vary depending ???

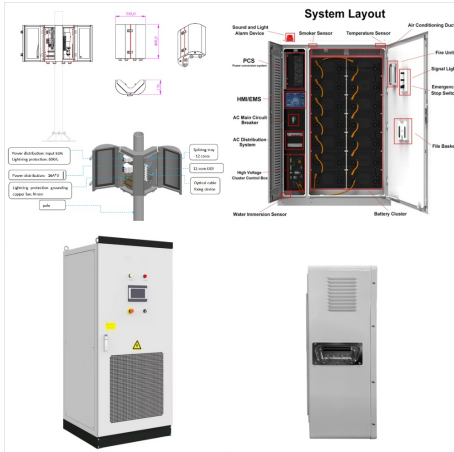


To retry self-tests, reset the inverter (using the Configuration Interface or AC power cycle). If self-tests fail, see "Self-Test Troubleshooting" section above. Check AC breaker is on the ON position and there is voltage in the inverter terminals.



Solar Panels. We use all-black, high-efficiency panels that look great on your roof and that maintain their production levels at high temperatures with minimal degradation over their 25-year lifespan. high efficiency and the ability to maintain it without needing installers to go on your roof. Tesla Solar Inverter has robust safety features

TESLA SOLAR PANELS TROUBLESHOOTING INVERTER



Tesla Solar Inverter Troubleshooting. If your Tesla Solar Inverter is having issues, there are a few things you can attempt to fix it. First, ensure the power switch is turned on, and the inverter is properly hooked to an outlet. If the inverter is still not working, try resetting it by unplugging it from the outlet and then plugging it back in.



Troubleshooting. If the system is not working correctly, perform the following steps. It may be necessary to turn off or power cycle the system. Note that power cycling the system must be done in the proper sequence as defined below. On Powerwall systems with interconnected solar, always turn off the solar inverter or disconnect the

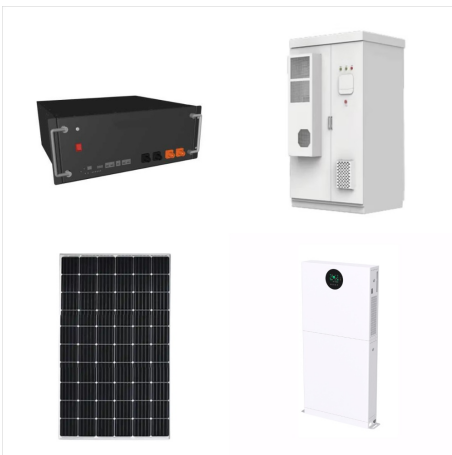


If you have received PTO and have safely turned on your system, you can get support, including troubleshooting your Powerwall, solar panels or Solar Roof through your Tesla Account or the Tesla app. The Tesla app allows you to quickly identify and, when possible, resolve any issues you may have with your energy product.

TESLA SOLAR PANELS TROUBLESHOOTING INVERTER



Steps to Troubleshoot. If Powerwall+ / Tesla Solar Inverter solar has been Enabled, wait up to 30 minutes for the inverter to start production. It may take time for production to start, particularly if it is a cloudy day; this is likely the issue if voltage is as expected (per the planset) but amperage is ???



Once you receive permission to operate (PTO) from your electric utility, Tesla will notify you that you can safely turn on your system. After PTO has been received, follow the steps in the video below to begin generating clean energy.



Powerwall+ / Tesla Solar Inverter is Not Producing;
Powerwall+ / Tesla Solar Inverter is Displaying 0A
for a Connected String; Powerwall+ / Tesla Solar
Inverter is Under Producing; Negative Solar
Reading; Solar Production Value Does Not Match
Inverter Output Solar Production is Higher or Lower
Than Expected

TESLA SOLAR PANELS TROUBLESHOOTING INVERTER



For Tesla Solar Inverter, use the Solar Inverter Configuration Interface or measure with a multimeter; For a third party inverter, use the display on the inverter itself (if present), the inverter production monitoring app, or measure with a multimeter Troubleshooting Neurio Remote Energy Meters; Gateway CTs and Neurio CTs are Overlapping



I just had a 21.5kW solar roof system installed that uses two 7.6 and one 3.8 Tesla inverters. These are not Solar Edge. They are the new Tesla units. There are reports of problems with the new Tesla inverter in one of the Tesla Energy Facebook groups. There are reports of problems with the new Tesla inverter in one of the Tesla Energy



One string has a DC input of 0V despite having a string of panels connected. Symptoms. On the landing page, solar production is lower than expected. On the Powerwall+ / Tesla Solar Inverter Device page, a connected DC string is grayed out and the solar production for that string is 0A.