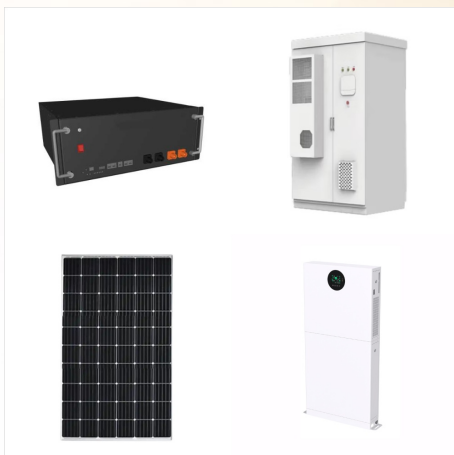




Tesla Solar Inverters: High-efficiency inverters designed to convert DC electricity generated by solar panels into AC electricity for use in homes and businesses. As of now, specific pricing information for Tesla inverters in Pakistan may vary depending on factors such as the model, capacity, and installation requirements. 8kw Solar System



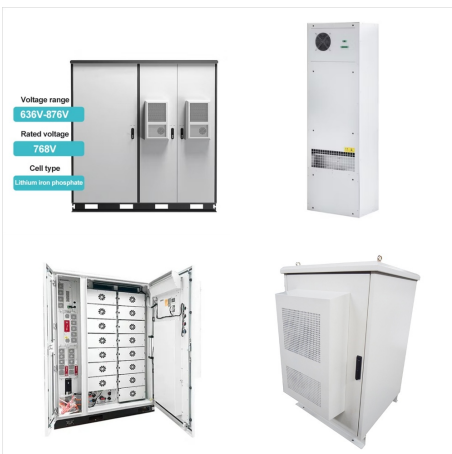
Powerwall 3 is a fully integrated solar and battery system, designed to meet the needs of your home. Powerwall 3 can supply more power with a single unit and is designed for easy expansion to meet your present or future needs. Learn more about what to expect for Powerwall 3.



Bridge Offline. If your solar inverter display shows that the system is producing energy, but production data is not updating or visible on the Tesla app, we are unable to share your Solar Roof production and efficiency with you or alert you if ???



How long do solar panels last? Your solar panel system is outfitted with durable solar panels and high-quality electrical equipment. Tesla does not make performance guarantees outside of your warranty period, but you can expect your solar panel system to ???



Pursuant to your solar agreement, Tesla files a UCC-1 financing statement on the title of the real property on which our PV system is installed to provide notice of our ownership interest in the PV system.



Unquestionably, the world's leading electric vehicle producer also stands as a major player in the renewable energy sector within the United States. Indeed, Tesla's future growth strategies rely heavily on its solar and energy storage business. The inverter holds a pivotal role in any solar system setup, requiring the selection of a high-quality product due to its intricate nature.



What to Expect After Installation Registering Your Tesla Solar Inverter Connecting to Tesla Solar Inverter Turning On Your System Monitoring Your System Understanding System Performance Troubleshooting Your System Get Help and Schedule Service What to Know About Scheduling Service Billing Engaging with the Tesla Community.



Tesla introduced its newest home battery backup system, the Powerwall 3, which comes with more power throughput and its own built-in solar inverter. The setup makes for a more vertically



The Powerwall+, reviewed below, is essentially the Powerwall 2 system with an integrated solar inverter, making it the first all-in-one hybrid solar battery system from Tesla. The next-generation Powerwall 3, revealed in September 2023, is a re-designed and much more powerful version of the Powerwall+.



Powerwall 3 can be configured as up to a 11.5 kW AC rated inverter that can support up to a maximum DC system size of 20 kW.. 20 kW DC is the absolute maximum solar system size that Powerwall 3 can support.; Powerwall 3 has a boosting feature that can send 5 kW continuously from solar to the battery at the same time that 11.5 kW of solar is inverted to AC power, ???



Once you receive permission to operate (PTO) from your electric utility, Tesla will notify you that you can safely turn on your system. After PTO has been received, follow the steps in the video below to begin generating clean energy.



Powerwall & the Grid. When Powerwall is installed without solar, it charges from the grid to power your home during grid outages, to save you money on your electricity bill using Time-Based Control mode and to support the Tesla Virtual Power Plant.. When Powerwall is installed with solar, recent installs can charge from the grid if allowed by your installer during commissioning ???



Tesla solar installations come with an additional 10-year comprehensive warranty that covers other aspects of the installation, like the Tesla solar inverter, roof mounts, and leaks. In most cases, these are all covered by separate ???



This article compares the Tesla Central inverter to the solar industry gold standard of the Enphase IQ8 micro inverter. Our solar professionals can help you decide which one is right for your energy needs. This article ???

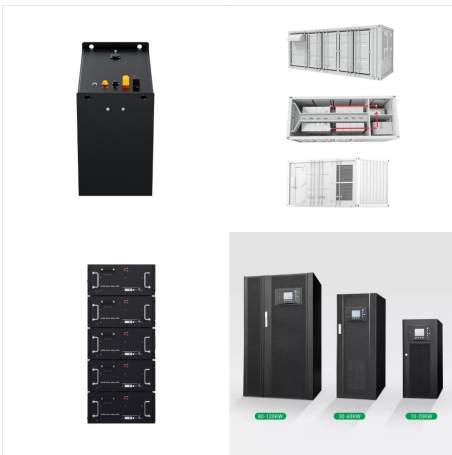


Tesla 3.8 kW Solar Inverter: 1538000-xx-y: Tesla  
7.6 kW Solar Inverter: Tesla 7.6 kW Solar Inverter:  
1538000-45-y: Tesla 7.6 kW Solar Inverter with site  
controller: Tesla 7.6 kW Solar Inverter with Site  
Controller in place of PVCOMM and factory-installed  
Neurio meter and CT for revenue-grade metering  
(RGM) 1576749-00-A





To develop the Tesla Solar Inverter, we leveraged our deep industry experience to design an inverter that offered the best value for system owners, while being easy to install, maintain, and service.



**Tesla Solar Inverter Features:** The Tesla Solar Inverter is a crucial component of the Tesla solar system, responsible for converting the direct current (DC) generated by the solar panels into usable alternating current (AC) electricity. It boasts several key features that set it apart from other inverters on the market. Efficiency Of Tesla



Tesla's solar inverter operates at 97.5% or 98% efficiency, according to the company. Tesla uses that information and satellite imagery to design your system. It's not clear when Tesla first



Powerwall gives you the ability to store energy for later use and works with solar to provide key energy security and financial benefits. Each Powerwall system is equipped with energy monitoring, metering and smart controls for owner customization using the Tesla app. The system learns and adapts to your energy use over time and receives over-the-air updates to add new ???



Check that your Tesla Solar Inverter is broadcasting its Wi-Fi access point. This will have a network name of "TEG-XXX" where XXX is the last three characters of the serial number. If your Tesla Solar Inverter is not broadcasting, power cycle your Tesla Solar Inverter by turning off the circuit breaker. The green LED on the right-hand side



If you experience one of the following issues, this indicates that your solar system is not producing energy and your home is being powered by your local utility. Inverter indicates an error. Inverter indicates no production. Inverter displays ???



Key features of the Powerwall 3 include an integrated solar inverter that allows direct connection to solar panels, enhancing overall efficiency. which includes integrating with Tesla's solar products and electric vehicles for a streamlined system. Enphase batteries, on the flip side, are known for their modular and scalable setup, which



Tesla is one of the largest U.S. solar installers and has deployed over 500,000 solar systems nationwide. This experience and scale, along with our with price match guarantee, allows us to provide the most cost competitive prices and ???



The Enphase system is an AC coupled system while the Tesla PW3 can be AC or DC coupled. The Enphase storage system has no moving parts (passive cooling) and separates system controls, and solar inverters from the actual ESS. The PW3 has fans for cooling and is an all-in-one box which usually generates more heat.