

Where is Heard Island located?

Key Words: sub-Antarctic islands, Heard Island, McDonald Islands. The Heard Island and the McDonald Islands (HIMI) group is located in the Indian Ocean sector of the Southern Ocean at approximately 53°S; 73°E, some 4000 km southwest of Western Australia, 4700 km southeast of Africa and 1000 km north of the Antarctic continent.

What is Heard Island & McDonald Islands?

Heard Island - 80% ice-covered, bleak and mountainous, dominated by a large massif (Big Ben) and an active volcano (Mawson Peak); McDonald Islands - small and rocky fish Mawson Peak, an active volcano, is on Heard Island

Who manages the Heard & McDonald Islands?

The islands are administered under the Heard and McDonald Islands Act of 1953 and the Environment Protection and Management Ordinance of 1987 by the Antarctic Division of the national Department of Tourism, Arts & Environment (formerly the Department of the Arts, Sport, the Environment, Tourism & Territories, DASETT).

How big is McDonald Island compared to Heard Island?

The islands are small and rocky. In 1980, they consisted of McDonald Island (186 metres (610 ft) high), Flat Island (55 metres (180 ft) high) and Meyer Rock (170 metres (560 ft) high). They totalled approximately 2.5 square kilometres (1.0 sq mi) in area. Like Heard Island, they were surface exposures of the Kerguelen Plateau.

Are there seabirds in Heard Island and McDonald Islands?

The inshore fishes of Heard and McDonald Islands, Southern Indian Ocean. Journal of Fish Biology 23: 283-292. Woehler, E. (1991). Status and conservation of the seabirds of Heard Island and the McDonald Islands. In Croxall, J. (ed.), Seabird Status and Conservation: A Supplement. ICBP Technical Publication No. 11.

Is Heard Island a volcano?

THE LIGHT SOLAR HEARD AND MCDONALD ISLANDS



Heard Island is dominated by Big Ben, a heavily glaciated and roughly circular volcano with a base diameter of 18-20 km and maximum elevation of 2745 m (Quilty & Wheller 2000).



? 1/4 ? Heard Island? 1/4
 ?,,3800,2000,40,???1953,???1997?????????? ???



OverviewHistoryGeographyWildlifeAdministration
 and economySee alsoFurther readingExternal links



The Territory of Heard Island and McDonald Islands (HIMI) is an Australian external territory comprising a volcanic group of mostly barren Antarctic islands, about two-thirds of the way from Madagascar to Antarctica. The group's overall size is 372 km² (144 sq mi) in area and it has 101.9 km (63 mi) of coastline. Discovered in the mid-19th century, the islands lie on ???

THE LIGHT SOLAR HEARD AND MCDONALD ISLANDS



The UK formally claimed the islands in 1910, and Australian explorer Douglas MAWSON visited Heard Island in 1929. In 1947, the UK transferred the islands to Australia for its Antarctica research, but Australia closed the research station on Heard Island in 1954 when it opened a new research station on the Antarctic continent.

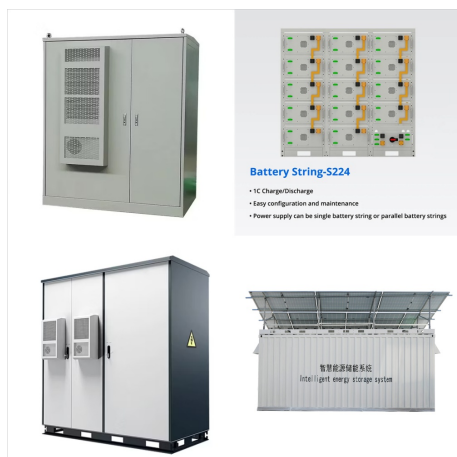


Mawson Peak on Heard Island is the highest Australian mountain (at 2,745 meters, it is taller than Mt. Kosciuszko in Australia proper), and one of only two active volcanoes located in Australian territory, the other being McDonald Island; in 1992, McDonald Island broke its dormancy and began erupting; it has erupted several times since, most recently in 2005



The Territory of Heard Island and McDonald Islands [2] [3] (HIMI; [4] ISO 3166 region code: HMD, HM, 334; [5]) is an Australian external territory comprising a volcanic group of mostly barren Antarctic islands, about two-thirds of the way from Madagascar to Antarctica. The group's overall land area is 372 km² (144 sq mi) and it has 101.9 km (63 mi) of coastline.

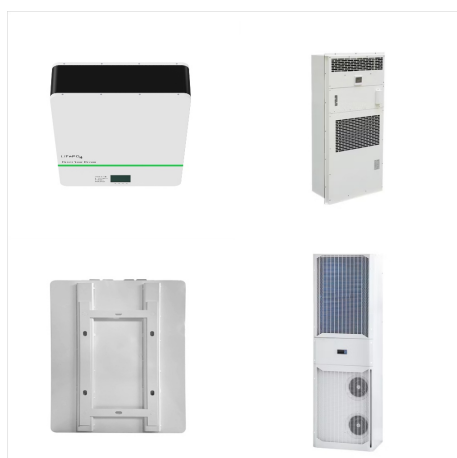
THE LIGHT SOLAR HEARD AND MCDONALD ISLANDS



Heard Island and McDonald Islands are located in the Southern Ocean, approximately 1,700 km from the Antarctic continent and 4,100 km south-west of Perth. Some breeding colonies of seabirds (black-browed albatross *Thalassarche melanophrys* and light-mantled sooty albatross (*Phoebetria palpebrata*) on cliffs; birds may be injured or killed by



Heard Island is 43 km long and 21 km wide. McDonald Islands are a group of uninhabited rocky islets, 40 km west of Heard Island (Encyclopaedia Britannica 2006). Heard Island has approximately 362.5 km² of area and the McDonald Island, 2.6 km². The site includes the adjacent offshore rocks and shoals and all territorial waters to a distance of 12 nautical ???

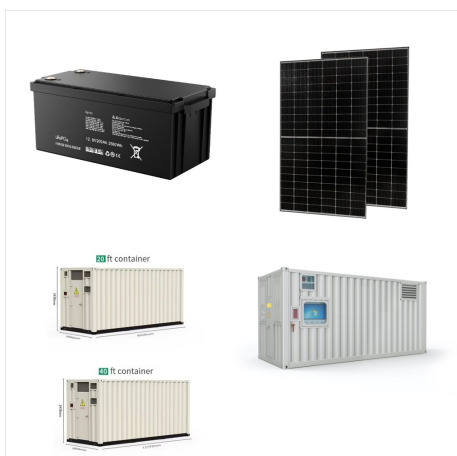


Current local time in Australia ??? Heard and McDonald Islands ??? McDonald Island. Get McDonald Island's weather and area codes, time zone and DST. Explore McDonald Island's sunrise and sunset, moonrise and moonset.

THE LIGHT SOLAR HEARD AND MCDONALD ISLANDS



Calculations of sunrise and sunset in Heard Island
??? Heard and McDonald Islands ??? Australia for
November 2024. Generic astronomy calculator to
calculate times for sunrise, sunset, moonrise,
moonset for many cities, with daylight saving time
and time zones taken in account.



Due to the extreme isolation of Heard Island and
McDonald Islands (HIMI), together with the
persistently severe weather and sea conditions,
human activities in the region have been, and
remain, limited. Atlas Cove and other minor camps
distributed across the island. Power is supplied by
small diesel generators, solar cells and wind

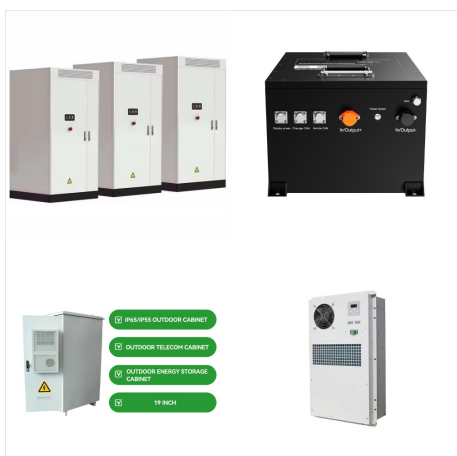


McDonald Island is much smaller (2.5 km²), about
100 000 years old and totally ice-free, and is
predominantly composed of phonolitic rocks. 9, 10
During the campaign, signs of volcanic activity

THE LIGHT SOLAR HEARD AND MCDONALD ISLANDS



Current local time in Australia ??? Heard and McDonald Islands ??? Heard Island. Get Heard Island's weather and area codes, time zone and DST. Explore Heard Island's sunrise and sunset, moonrise and moonset.



Vector images of flag of Heard Island and McDonald Islands available to free download. completely free for commercial and non-commercial use (public domain) based on vector file from Wikimedia Commons; SVG, PDF (Adobe Acrobat), AI (Adobe Illustrator) or EPS format; we appreciate backlink to <https://flagpedia>

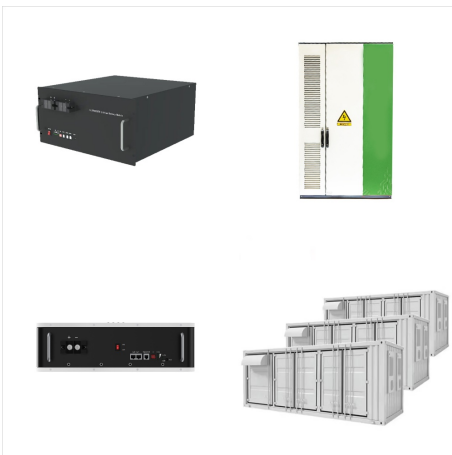


Heard Island and McDonald Islands are located in the Southern Ocean, approximately 1,700 km from the Antarctic continent and 4,100 km south-west of Perth. As the only volcanically active subantarctic islands they "open a window into the earth", thus providing the opportunity to observe ongoing geomorphic

THE LIGHT SOLAR HEARD AND MCDONALD ISLANDS



HEARD AND MCDONALD ISLANDS AUSTRALIA
Heard Island and the McDonald Islands are in the Southern Ocean, approximately 4,100 km south-west of Perth and 1,700 km from the Antarctic continent. 680-790 breeding pairs), light-mantled albatross *Phoebastria palpebrata* (200-500) and wandering albatross *Diomedea exulans* (VU), first reported breeding



Heard Island and McDonald Islands are uninhabited, barren, Subantarctic islands in the Southern Ocean, far due south of India and roughly 400 km southeast of Kerguelen of the French Southern and Antarctic Lands. The islands are administered by Australia and listed as a UNESCO World Heritage site. Although it's administered by Australia, the islands are approximately 4,000 ???



Heard Island and McDonald Islands in the Southern Ocean A map of Heard Island and McDonald Islands. Heard Island, by far the largest of the group, is a 368-square-kilometre (142 sq mi) mountainous island covered by 41 glaciers [21] (the island is 80% covered with ice [1]) and dominated by the Big Ben massif has a maximum elevation of 2,745 metres (9,006 ft) at ???

THE LIGHT SOLAR HEARD AND MCDONALD ISLANDS



The Territory of Heard Island and McDonald Islands (HIMI; ISO 3166 region code: HMD, HM, 334;) is an Australian external territory comprising a volcanic group of mostly barren Antarctic islands, about two-thirds of the way from Madagascar to Antarctica. The group's overall land area is 372 km² (144



Current local time in Australia ??? Heard and McDonald Islands ??? Territory of Heard Island and McDonald Islands. Moon Light World Map; Eclipses; Live Streams; Seasons; Astronomy News. Timers. Timers Home; Stopwatch; Timer; Countdown to Any Date; Winter Countdown; Christmas Countdown; New Year Countdown; Solar Noon. Sun in North: 12:00



Heard Island is a 368-square-kilometre (142 sq mi) bleak and mountainous island located at 53°06'00"S 73°31'00"E s mountains are covered in glaciers and dominated by . Mawson Peak, a 2,745-metre (9,006 ft) high complex volcano which forms part of the Big Ben massif.. Mawson Peak is the highest Australian mountain (higher than . Mount Kosciuszko), and one of only 2 ???

THE LIGHT SOLAR HEARD AND MCDONALD ISLANDS





Key Words: Heard Island, McDonald Islands, Kerguelen Plateau, volcanism, volcanic activity, Big Ben, Laurens Peninsula, plume systems

INTRODUCTION The Australian Territory of Heard Island and the McDonald Islands, centred on Heard Island at 53°06"S; 73°32"E, is one of the most isolated regions on Earth, lying in the central-



This 3 days itinerary is the perfect guide to the best things to see in Heard and McDonald Islands. It includes day-by-day activities, travel tips, and the top places to visit. Day 1: Arrival and Initial Exploration. Morning. Arrive at Heard Island via expedition vessel, typically from ???



Time for sunrise, sunset, moonrise, and moonset in Territory of Heard Island and McDonald Islands ??? Heard and McDonald Islands ??? Australia. April 2024 Total Solar Eclipse; Live Streams; Seasons; Astronomy News night, and twilight times in Territory of Heard Island and McDonald Islands today. Black is nighttime, light blue is daytime