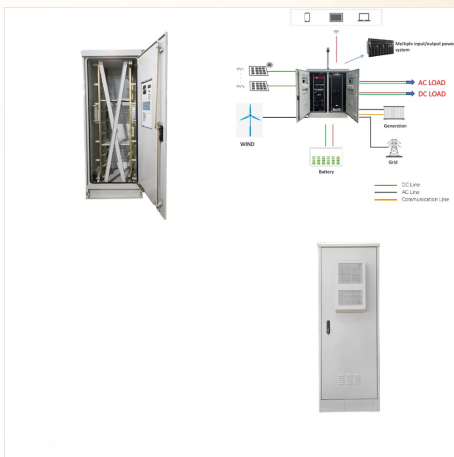
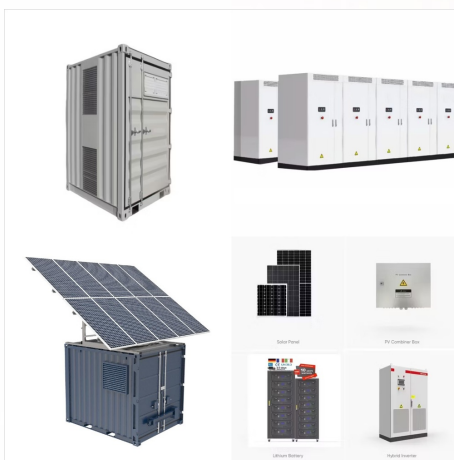




The Centre is a centrist think tank based in Kuala Lumpur, Malaysia. Our work is focused on understanding the gaps between top-down policy decisions and ground-level impact through primary research. We aim to ???



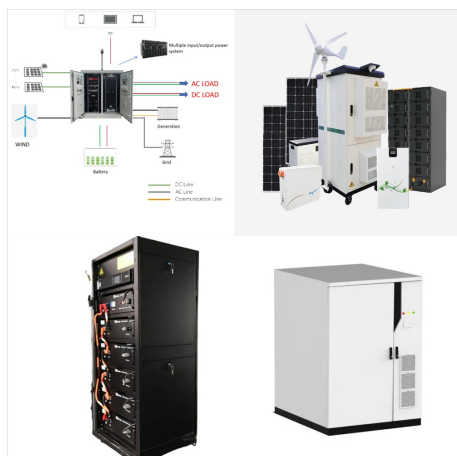
Fossil fuels are the primary source of power across Peninsular Malaysia and Sabah, meeting most of their power demand. In 2022, coal power plants account for 56% of Peninsular Malaysia's power generation, while gas dominates Sabah's power generation at 83%.



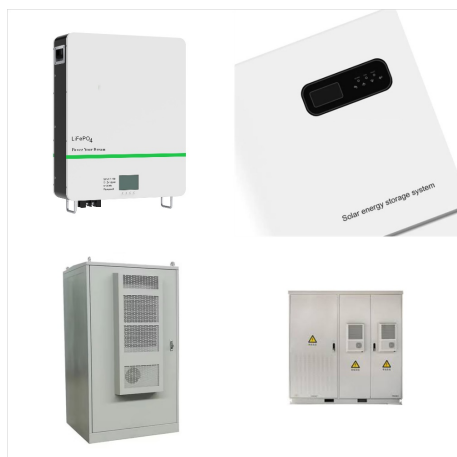
The Centre is a centrist think tank based in Kuala Lumpur, Malaysia. Our work is focused on understanding the gaps between top-down policy decisions and ground-level impact through primary research. We aim to bring data-driven yet accessible research to policymakers and to the public.



Powering Malaysia's green future. 13 Nov 2024.
MALAYSIA, like many Southeast Asian countries, faces the challenge of balancing sustainability, reliability and affordability in its energy goals. Is the country ready for renewables? The country has set ambitious targets: net-zero emissions by 2050 and increasing the share of renewable energy in its power mix.



The government of Malaysia has recently unveiled the National Energy Transition Roadmap (NETR). This roadmap serves as a comprehensive guide to Malaysia's commitment to building a sustainable and inclusive energy system for the future. TNB Power Generation Sdn Bhd (TNB Genco), a wholly-owned subsidiary TNB will spearhead the construction of



INSIGHT Think Tank is a research institute and consulting firm based in Malaysia. We provide innovative ideas and thoughtful insights to governments, institutions, businesses and community through our high calibre and in-depth research ???



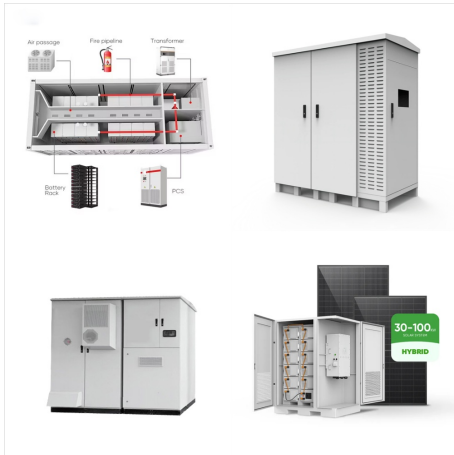
INSIGHT Think Tank is a research institute and consulting firm based in Malaysia. We provide innovative ideas and thoughtful insights to governments, institutions, businesses and community through our high calibre and in-depth research studies as well as strategic analysis and advices.



Fossil fuels are the primary source of power across Peninsular Malaysia and Sabah, meeting most of their power demand. In 2022, coal power plants account for 56% of Peninsular Malaysia's power generation, while gas ???



More than 50 initiatives are outlined under the six energy transition levers and five enablers, collectively aiming to power Malaysia's future by unlocking potential in new growth areas and delivering progress and prosperity to all Malaysians.



By diversifying away from fossil fuels and actively nurturing growth in green mobility, renewable energy, energy storage, and other emerging energy technologies, Malaysia is positioned to enhance its competitiveness and attain significant economic gains.



More than 50 initiatives are outlined under the six energy transition levers and five enablers, collectively aiming to power Malaysia's future by unlocking potential in new growth areas and delivering progress and ???