

Are Titan lithium batteries good?

Whatever the weather, climate or time of year, TITAN Lithium batteries are guaranteed to give the pinnacle of battery performance.

Why do Titan lithium batteries use the highest quality lithium cells?

All TITAN lithium batteries use the highest quality lithium cells. In doing so, we can achieve better performance, higher BMS thresholds and a better overall lifespan compared to others. We use prismatic lithium cells (they look like a long rectangle) rather than cylindrical cells.

How much does a Titan lithium battery cost?

Despite its high initial cost, TITAN lithium is cheaper than its lead-acid counterparts over its lifespan. Our design life is 10 years - rounded up this battery costs €800 or €80 a year.

Can I use a Titan battery for a drone?

If you're using Titan for planes or drones, use our flight battery calculator. What is the minimum voltage of these packs? Lithium Ion batteries can be safely used down to 2.5v per cell (example: 7.5v for a 3S/11.1v or 10v for a 4S/14.8v). This would leave the pack at 0% capacity.

How long does a Titan battery last?

Introducing TITAN's flagship lithium leisure battery. With an impressive 150Ah / 1,920Wh of capacity, housed in an easy drop-in replacement battery shape (019 case size), it features the highest Grade A cells with a matched BMS that ensures an average lifespan of 15-20 years.

Do Titan batteries have a BMS?

All TITAN batteries have their own BMS built-in. A Battery Management System (BMS) is a circuit board that is mounted on top of the internal cells inside the battery which is connected in between the cell terminals, and external battery terminals.



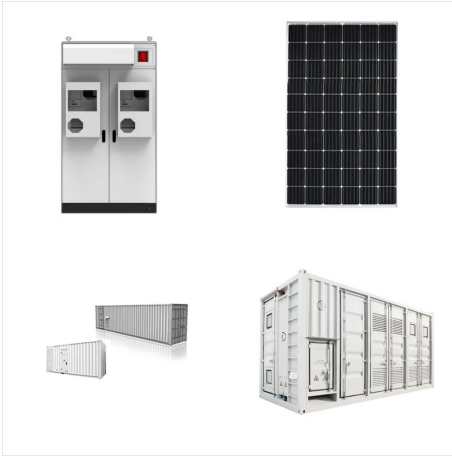
TITAN. U1 12V 300CCA Tractor Battery (Left Terminal) (667) Questions & Answers (108) Hover Image to Zoom. Share. Print. 300CCA battery fits mid-size lawn tractors and garden equipment; Reliable, maintenance-free starting power every time; Features a left-side terminal configuration; View More Details; Store 0 in stock. Download Our App. How



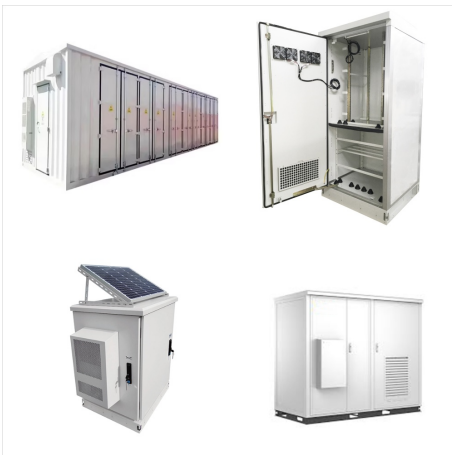
A lithium-titanate battery is a modified lithium-ion battery that uses lithium-titanate nanocrystals, instead of carbon, on the surface of its anode. This gives the anode a surface area of about 100 square meters per gram, compared with 3 square meters per gram for carbon, allowing electrons to enter and leave the anode quickly.



TITAN Batteries use Lithium Iron Phosphate cells. TITAN LiFePO 4 batteries are inherently safe both chemically and thermally, and do not use rare materials like Cobalt or Nickel. In return, we get a slightly lower cell voltage of 3.2V per cell (4x cells = 12.8V), and a lower energy capacity compared to NMC (Lithium nickel manganese cobalt ??? the cells used in EVs), however ???



XS POWER Titan8 (Titan 8) Lithium Battery Series. The built-in 2/0 bussing allows up to 4 Positive and 4 Negative hidden direct connections to each module without the need for any external exposed bussing, while still leaving two easily accessible top terminals and four series or parallel expansion terminals to easily build a bank of nearly any configuration from 12V, 14V, ???



Lithium Polymer / Li-Poly Chargers Only (BMS / XH 3-Pin Charging Connector) About Titan Power. Titan was started in 2015 to bring the most advanced Lithium Ion batteries and other power technologies to the world of Remote Controlled Aircraft, UAVs, Airsoft, and many other applications of high energy density cells.



The heart of Titan's most recent battery: Made with Sinowatt 30SP | Datasheet | Testing a Chinese cell best described as an imitation of Korean Samsung 30Q or Japanese Sony VTC6. delivers 22% less energy in the form of lower working voltage at 15A discharge | 15A Energy Scores 1 2. delivers 29% less energy in the form of lower working voltage at 15A than the best ???



About Titan Power. Titan was started in 2015 to bring the most advanced Lithium Ion batteries and other power technologies to the world of Remote Controlled Aircraft, UAVs, Airsoft, and many other applications of high energy density cells. Our headquarters and new product development team is located in Arkansas USA.



Lithium Ion batteries store a ton of energy, and while these can endure hard impacts, long drains of high power, etc, they do have their limits, and if pushed too hard or are not used properly, they can be very dangerous. How to be safe As a general rule, if you store them 30% charged in a cool, safe place away from anyt



Order online at Screwfix . 18V 5.0Ah battery suitable for indoor and outdoor use. Features battery capacity indicator. Compatible with all Titan TXP 18V tools. FREE next day delivery available, free collection in 1 minute.



Lithium-ion battery for all Titan ball machines. Each fully charged lithium battery supports 2 hours of play. If you want to play for longer than 2 hours we recommend buying additional batteries. These batteries have integrated features for extra protection. These include temperature control, overload control, and discharge protection.



Titan Power 3D Printed PEQ Box for Titan Lithium Ion Batteries. ?24.99 . In Stock. Titan Power Titan Power LiPo/LiFe Smart Battery Charger - UK Plug. ?39.99 . In Stock. Titan Power Titan Power 7.4v 350mAh Li-Ion HPA Battery - JST Connection. ?23.99 . In Stock. Titan Power Titan NiMh 1700mAh 8.4v Brick - Tamiya.



The TITAN Lithium Gold Standard: 460Ah of pure energy with unparalleled cell and build quality, equipped with Bluetooth & heating capability as standard, and includes a state-of-the-art built-in custom BMS. This lithium battery is for those who need massive energy storage needs; perfect for home storage, large motorhomes, boat house batteries and industrial use. Backed up with free ???



Titan has since become the only brand I choose for all my charging needs. I love my new Titan chargers for my phone. When plugged in the cable does not go next to the body to maintain a correct alignment that does not harm the cable. As you can see, it lights up so you know if it is working and it really helps to find cable and/or cable at night.



If you're in the market for a reliable and powerful 24V lithium battery, the TITAN 24V 230Ah should be at the top of your list. Our 230Ah lithium battery is equipped with exceptional cell quality, Bluetooth connectivity, and heaters as standard features. It's perfect for home solar storage, marine use, or large motorhomes seeking the advantages of lithium technology in a ???



Titan started in 2015 to bring the most advanced Lithium Ion batteries and other power technologies to the world of Remote Controlled Aircraft, UAVs, Airsoft, and many other applications of high energy density cells.



The Titan 8 Series Lithium Titanate Oxide (LTO) batteries are constructed with a lightweight, powerful, and modular design perfect for mobile audio, marine, Powersports, racing, commercial, and leisure applications. They're available in either high power or high reserve capacity configurations at 2VDC, 12VDC, 14VDC, and



If you're in search of a trustworthy mid-sized leisure battery, TITAN Lithium's 105Ah lithium battery is the perfect choice. Boasting top-notch cell quality, Bluetooth and heaters as standard and unbeatable built-in matched BMS, it is the smallest lithium battery on the market that offers like-for-like capacity.



Titan Lithium-Ion Airsoft Battery | 3000mAh 11.1v Stick T-Plug (Deans) | Maximum Capacity & Performance | Made in The USA . Visit the T TITAN Store. 4.3 4.3 out of 5 stars 228 ratings | Search this page . \$42.13 \$ 42. 13. FREE Returns . Return this item for free.



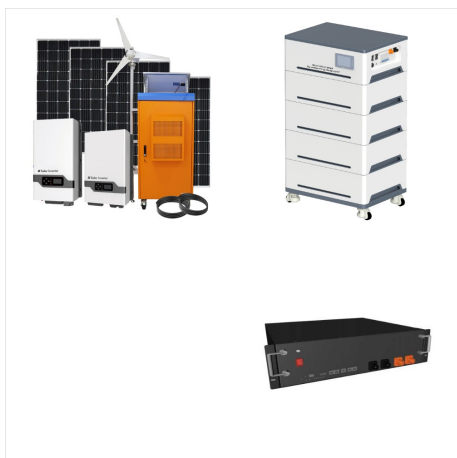
NO MEMORY: Titan Power's Lithium Ion batteries can be safely charged from any level, whether empty or nearly full. Even if your device stops functioning due to low battery, it remains within safe operating ranges and can be recharged to 100% without damage. Our 11.1 volt batteries retain both their charge and capacity longer.



Titan Lithium-Ion Airsoft Battery | 3000mAh 11.1v Stick Tamiya Plug | Maximum Capacity & Performance | Made in The USA . Visit the T TITAN Store. 4.3 4.3 out of 5 stars 154 ratings | Search this page . \$42.13 \$ 42. 13. FREE Returns . Return this item for free.



Titan started in 2015 to bring the most advanced Lithium Ion batteries and other power technologies to the world of Remote Controlled Aircraft, UAVs, Airsoft, and many other applications of high energy density cells.



12v, 14V & 16V Lithium Titanate Power Modules.
 12v, 14V & 16V Lithium Titanate Power Modules.
 Skip to the content. Facebook; Instagram; X ; Find
 Your Battery Product Lineup AGM Batteries Lithium
 Batteries SuperBANKS Accessories Charging Cable
 Merch Starting Batteries D-Series Batteries



Graphite anodes and conventional silicon additives will only take battery performance so far. Titan Silicon??? is a new class of nano-composite silicon anode ??? delivering next-level energy density and engineered for mass scale to power the world's best lithium-ion batteries and enable today's most innovative products.



TITAN Batteries use Lithium Iron Phosphate cells. TITAN LiFePO 4 batteries are inherently safe both chemically and thermally, and do not use rare materials like Cobalt or Nickel. In return, we get a slightly lower cell voltage of 3.2V per cell (4x cells = 12.8V), and a lower energy capacity compared to NMC (Lithium nickel manganese cobalt - the cells used in EVs), however ???



Titan Lithium is the flagship Lithium Refinery of the RK Group, currently under development in Abu Dhabi, UAE. Set to become a cornerstone in the global Lithium supply chain, this state-of-the-art USD 1.35 Billion facility is strategically located to revolutionize the production of battery-grade Lithium Carbonate and Lithium Hydroxide.



Buy Titan Battery Power Tool Batteries & Chargers at Screwfix . 60 days free credit available. Products reviewed by the trade and home improvers. The UK's leading retailer of trade tools and hardware. Free next day delivery available.